

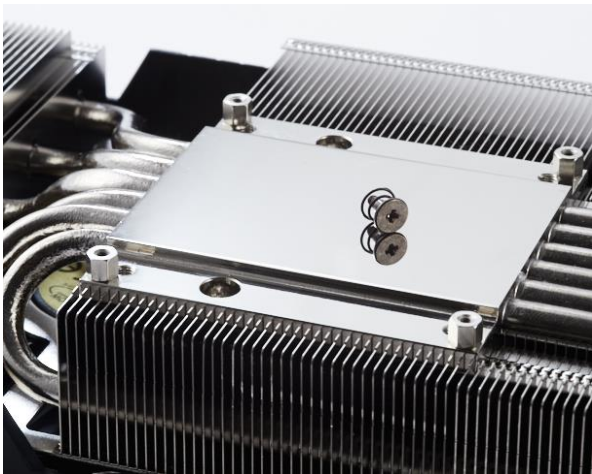
ROG-STRIX-GTX1080TI-O11G-GAMING

OUTSHINE THE COMPETITION !!

ASUS Exclusive Innovations

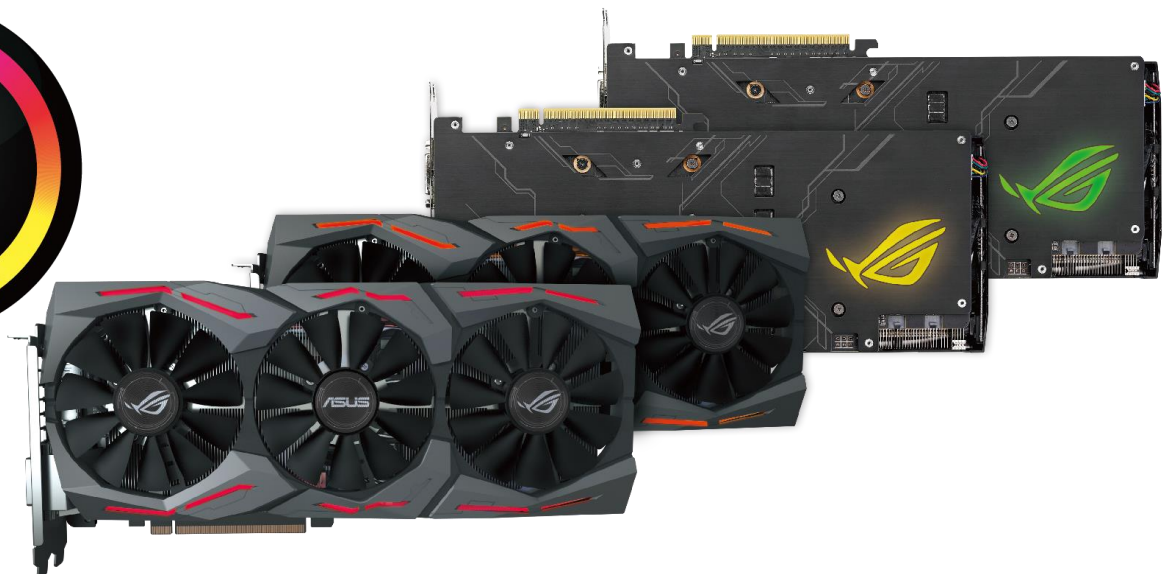
■ MaxContact Technology and 2.5-Slot Width

2X more contact with GPU for improved thermal transfer. Up to 30% cooler and 3X quieter gaming performance.



■ ASUS Aura Sync

RGB LED synchronization enables complete system personalization.



■ Auto-Extreme Technology

An industry-only, 100% automated production process that incorporates Super Alloy Power II components for premium quality and best reliability.



■ VR-FRIENDLY HDMI PORTS

Let you connect a VR device and display at the same time and enjoy immersive virtual reality experiences without having to swap cables.



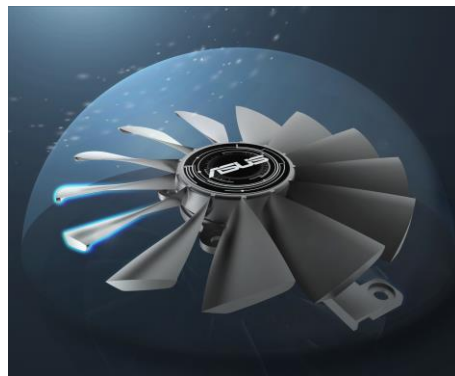
■ ASUS FanConnect II

Featuring two 4-pin GPU-controlled headers that can be connected to system fans for targeted supplemental cooling and optimal thermal performance.



■ Patented Wing-Blade IP5X-Certified Fans

Max air flow and dust resistant for longer fan lifespan.



■ GPU Tweak II with Xsplit Gamecaster

Tweak Till Your Heart's Content

With an intuitive new UI, GPU Tweak II makes overclocking easier than ever, and features Game Booster to maximize graphics performance and XSplit Gamecaster to stream or record your gameplay.

Free 1-year premium XSplit Gamecaster (USD 99.95 /yr)



OC
Edition

● **OC edition:**

1708MHz GPU boost clock and
11100MHz memory clock in
OC mode for outstanding
gaming experience



11 GDDR5X
Memory

● **Gigantic 11GB GDDR5X Memory:**

On-board memory for the best
gaming experience & the best
resolution



GPU TWEAK II
REAL-TIME GRAPHICS TUNING
AND LIVE STREAMING

● **GPU Tweak II:**

GPU Tweak II helps you modify
clock speeds, voltages, fan
performance and more, all via
an intuitive interface.



● **Ultimate GeForce :**

The GeForce® GTX 1080 Ti is NVIDIA's
new flagship gaming GPU, based on the
NVIDIA Pascal™ architecture. The latest
addition to the ultimate gaming
platform, this card is packed with
extreme gaming horsepower, next-gen
11 Gbps GDDR5X memory, and a
massive 11 GB frame buffer.

● **Performance :**

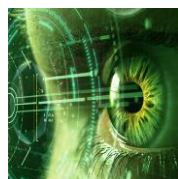
The GeForce® GTX 1080 Ti is the
world's fastest gaming GPU. 3584
NVIDIA® CUDA® cores and a massive 11
GB frame buffer deliver 35% faster
performance than the GeForce GTX
1080

● **NVIDIA Pascal:**

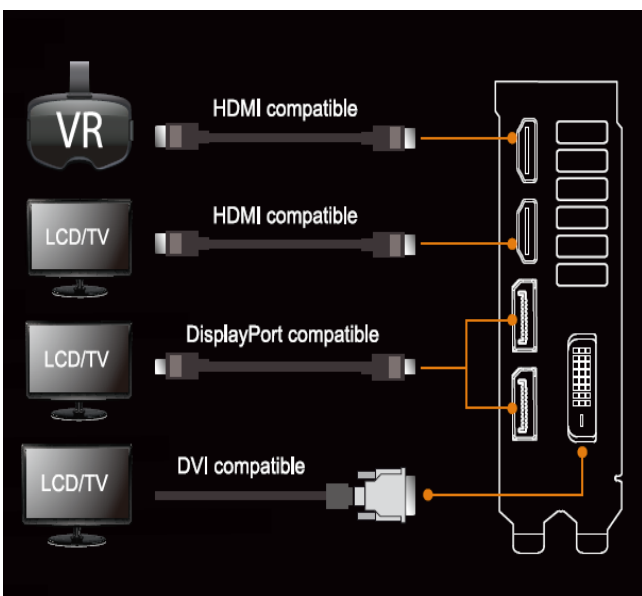
GeForce® GTX 10-Series graphics cards
are powered by Pascal to deliver up to
3X the performance of
previous-generation graphics cards,
plus breakthrough gaming technologies
and VR experiences.

● **VR Ready:**

Discover next-generation VR
performance, the lowest latency, and
plug-and-play compatibility with
leading headsets—driven by NVIDIA
VRWorks™ technologies. VR audio,
physics, and haptics let you hear and
feel every moment.



I/O Specifications



Hardware Specification

Model	ROG-STRIX-GTX1080TI-O11G-GAMING
Graphics Engine	NVIDIA® GeForce® GTX 1080Ti
Bus Standard	PCI Express® 3.0
OpenGL	OpenGL® 4.5
Video Memory	11GB GDDR5X
GPU boost Clock	OC mode : 1708 MHz Gaming mode : 1683 MHz
GPU base Clock	OC mode : 1594 MHz Gaming mode : 1569 MHz
CUDA cores	3584
Memory Clock	OC mode : 11100 MHz Gaming mode : 11010 MHz
Memory Interface	352-bit
DVI Output	1x Native Dual-link DVI-D
HDMI Output	2x Native HDMI 2.0
HDCP compliant	YES
DisplayPort	2x Native DisplayPort 1.4
Power Connectors	2x 8 pin
Accessory Bundled	1x ROG Velcro Hook & Loop 1x Power Cable
Software Bundled	ASUS GPU Tweak II & Driver
Max. Digital Resolution	7680 x 4320
Dimension	The card size is 11.73 x 5.28 x 2.07 inches 29.8 x 13.4 x 5.25 cm
Note	<ul style="list-style-type: none"> To have the best cooling performance, ASUS STRIX-GTX1080TI extends the fansink to 2.5 slots. Please double check you Chassis and Motherboard dimension prior to purchase to make sure it fits in your system! Note that the actual boost clock will vary depending on actual system conditions. For more information, please visit http://www.geforce.com/

•Specifications are subject to change without notice.

•PCB color and bundled software versions are change without notice.

•Brand and product names mentioned are trademarks of their respective company.



