

AEGIS

MA_TX PERFORMANCE



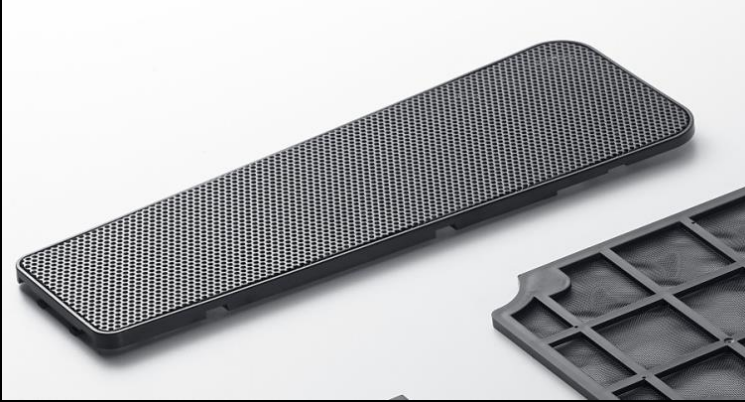
Bold Design



Smooth Lines



Thick top-panel to channel airflow and block noise



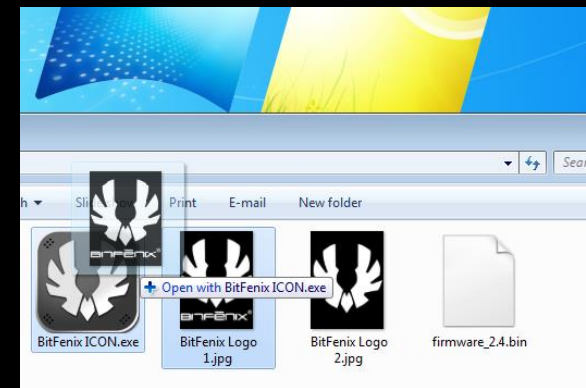
Thick closed front panel with large side vents to block noise



Programmable Bitfenix ICON™ Display



2.8" diagonal
240 x 320 resolution
Plug and Play – driver less
Connects to internal USB header
Drag and Drop Icon update
Open source Firmware and App



Available in black, white and 3 vibrant colors



Mixed color internals, not just plain black or white



Huge Sidepanel Window



Removable PSU Cover



Pre-installed Mainboard Standoffs



Supports mini ITX Mainboards



Supports micro ATX Mainboards



Massive Backplate Access for High-End CPU coolers



Supports even the longest GPUs

380mm VGA



5 PCI slots for optimum Dual GPU support

SLI and Xfire Support



Enough options for TeraBytes of Flash and Disk storage



Removable 2.5" cage

Removable 3.5" cage

2.5" show off slot

Removable 3.5" cage

Hidden 2.5" slot

Removable tool free 2.5" cage



Removable tool free 3.5" cage



2.5" display slot



Second Removable Tool free 3.5" cage



4 mounting HDD cage mounting locations...



160mm PSU

...to support even the longest PSUs



180mm PSU

Hidden 2.5" slot behind the PSU



Integrated Fan Controller – 4 headers, 3 speeds




Maximum Airflow in a mATX case




Up to seven 120mm Fans, up to five 140mm fans



-  140mm Fan Position
-  120mm Fan Position


Several Bottom Fan locations for maximum compatibility



 140mm Fan Position

Several Bottom Fan locations for maximum compatibility



 140mm Fan Position


Several Bottom Fan locations for maximum compatibility



 120mm Fan Position

Several Bottom Fan locations for maximum compatibility



 120mm Fan Position

Several Bottom Fan locations for maximum compatibility



 120mm Fan Position

Adjustable Rear Fan Position for Radiator/VGA Clearance



Adjustable Rear Fan Position for Radiator/VGA Clearance



Full length magnetic dust filters – ultra fine 0.15mm mesh



Magnetic dust filters



Easy click-on dust filter, enables top intake for a positive pressure config





Easy Click on dust filter

Maximum AIO support for an mATX case




280 AIO + 360 AIO



-  280mm AIO push pull
-  360mm AIO push pull


Dual 280 AIO



 280mm AIO push pull

240 AIO + 240 AIO



 240mm AIO push pull

Maximum watercooling support for an mATX case



Up to **110mm** Top 240 Clearance for an 85mm Radiator in push pull



Up to **110mm** Front 360 Clearance for an 85mm Radiator in push pull



Up to **110mm** Front 280 Clearance for an 85mm Radiator in push pull



Up to **110mm** Front 280 Clearance for an 85mm Radiator in push pull



Up to **110mm** Front 280 Clearance for an 85mm Radiator in push pull



Maximum Radiator Thickness

Radiator Support			
Location	Radiator	PUSH (radiator + 1 fan)	PUSH PULL (radiator + 2 fans)
Top	280	61mm (36mm + 25mm)	X
Top	240	85mm (60mm + 25mm)	110mm (60mm + 50mm)
Top	140	80mm (55mm + 25mm)	80mm (30mm + 50mm)
Top	120	105mm (80mm + 25mm)	130mm (80mm + 50mm)
Front	360	85mm (60mm + 25mm) *1 *2	85mm (35mm + 50mm) *1 *2
Front	280	85mm (60mm + 25mm) *1	85mm (35mm + 50mm) *1
Front	240	85mm (60mm + 25mm) *1	85mm (35mm + 50mm) *1
Front	140	85mm (60mm + 25mm) *1	85mm (35mm + 50mm) *1
Front	120	105mm (80mm + 25mm)	130mm (80mm + 50mm)
Bottom	140	90mm (65mm + 25mm)	90mm (40mm + 50mm)
Bottom	120	105mm (80mm + 25mm)	130mm (80mm + 50mm)
Rear	120	105mm (80mm + 25mm)	130mm (80mm + 50mm)
*1 - with 300mm VGA			
*2 - Max 360 radiator height = 406mm			
Note: Most configurations require one or several of the storage cages to be removed			

Bundled Reservoir and Pump brackets



Reservoir bracket



Pump bracket

Reservoir or Pump/Res combo at the top



Reservoir bracket

Reservoir or Pump/Res combo at the top



Reservoir bracket



Reservoir or Pump/Res combo in the front



Reservoir bracket



Reservoir or Pump/Res combo in the front

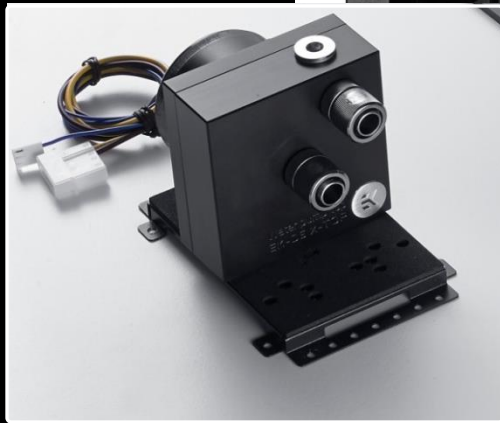


Reservoir bracket

Reservoir or Pump/Res combo at the bottom



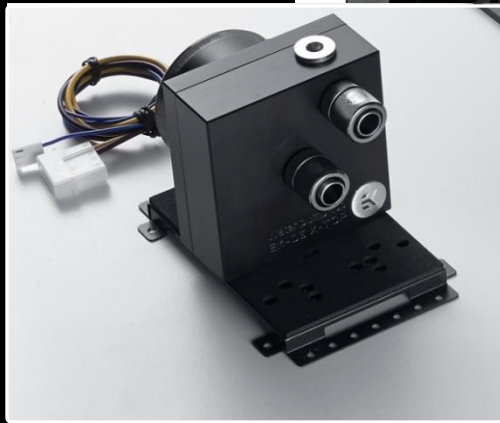
Pump or Pump/Res combo locations



Pump bracket



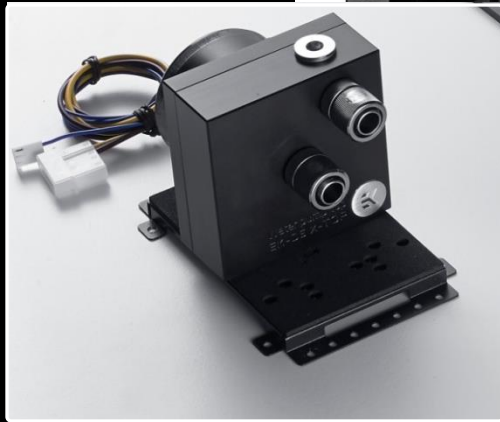
Pump or Pump/Res combo locations



Pump bracket



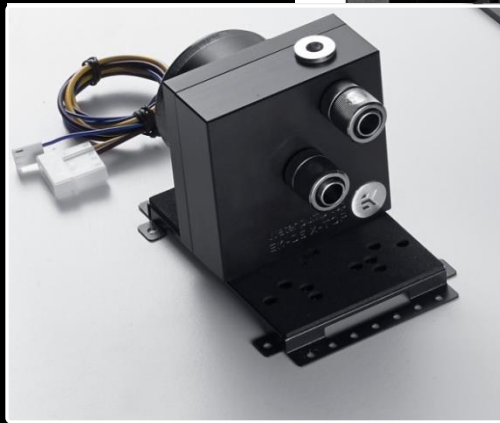
Pump or Pump/Res combo locations



Pump bracket



Pump or Pump/Res combo locations



Pump bracket



Low profile pump position on top of HDD cage



Low profile pump position on top of HDD cage



Dimensions Specifications and Feature Overview

Specifications	
Materials	Steel, Plastic, Acrylic (window)
Colors	Black/Black, Black/White, Black/Red, Black/Yellow, Black/Blue
Case Dimensions (mm/in)	205 x 470 x 480 (WxHxD) - 8.07 x 18.50 x 18.89 (WxHxD)
Box Dimensions (mm/in)	255 x 530 x 505 (WxHxD) - 10.03 x 20.86 x 19.88 (WxHxD)
Box Volume	2.4 ft ³ /cuft - 68.25L - 0.068m ³
Case Weight (kg/lbs)	6.7 / 14.8
Box Weight (kg/lbs)	7.8 / 17.2
Max CPU Cooler Height (mm/in)	170mm / 6.7
Max AIO Support (push/push pull)	360 / 360
Max Radiator Support (push/push pull)	360 (85mm) + 240 (60mm) / 360 (60mm) + 240 (60mm)
Max VGA Length (mm/in)	380mm / 14.9 with HDD cage installed (depends on front radiator configuration)
Motherboard	Micro ATX, Mini-ITX
ICON™ Display	2.8" TFT, 240 x 320 (AEGIS CORE does NOT feature the ICON™ Display)
3.5" Drive Slots	4 (two removable cages with 2 tool free slots each)
2.5" Drive Slots	4 (one removable cage with 2 tool free slots each, one slot next to the Mainboard, one slot behind the PSU)
Max HDD Capacity	40TB (4x 8TB 3.5" + 4x 2TB 2.5")
Max SSD Capacity	16TB (8x 2TB 2.5")
Fan Controller	4 fan headers, 3 speeds (12v, 7v, 5v) with 3 indicator LEDs (white)
Cooling Top	3x 120mm or 2x140mm – click on dust filter
Cooling Front	3x 120mm or 2x140mm – magnetic dust filter
Cooling Rear	1x 120mm (included)
Cooling Bottom	1x 120mm or 1x140mm – magnetic dust filter
PCI Slots	5
I/O	USB 3.0 x 2, Audio, Mic, Power, Reset, Power LED (white), HDD LED (white)
PSU	PS2 ATX, up to 220mm in length, intake from case interior or case bottom
Special Features	ICON™ Display (Aegis only), aluminum Bitfenix Logo sticker (Aegis CORE only), Fan Controller, PSU cover, Magnetic Dust Filters, Pump bracket, Reservoir Bracket, 2 Removable HDD Cages, 1 removable SSD cage, Tool less HDD and SSD system, Hidden 2.5" slot, 2.5" Show Off slot

Maximum Radiator Thickness

Radiator Support			
Location	Radiator	PUSH (radiator + 1 fan)	PUSH PULL (radiator + 2 fans)
Top	280	61mm (36mm + 25mm)	X
Top	240	85mm (60mm + 25mm)	110mm (60mm + 50mm)
Top	140	80mm (55mm + 25mm)	80mm (30mm + 50mm)
Top	120	105mm (80mm + 25mm)	130mm (80mm + 50mm)
Front	360	85mm (60mm + 25mm) *1 *2	85mm (35mm + 50mm) *1 *2
Front	280	85mm (60mm + 25mm) *1	85mm (35mm + 50mm) *1
Front	240	85mm (60mm + 25mm) *1	85mm (35mm + 50mm) *1
Front	140	85mm (60mm + 25mm) *1	85mm (35mm + 50mm) *1
Front	120	105mm (80mm + 25mm)	130mm (80mm + 50mm)
Bottom	140	90mm (65mm + 25mm)	90mm (40mm + 50mm)
Bottom	120	105mm (80mm + 25mm)	130mm (80mm + 50mm)
Rear	120	105mm (80mm + 25mm)	130mm (80mm + 50mm)
*1 - with 300mm VGA			
*2 - Max 360 radiator height = 406mm			
Note: Most configurations require one or several of the storage cages to be removed			

Packaging and Shipping

Aegis (icon display)	Black	White	Red	Blue	Yellow
P/N	BFC-AEG-300-KKWL1-RP	BFC-AEG-300-WKWL1-RP	BFC-AEG-300-RKWL1-RP	BFC-AEG-300-BKWL1-RP	BFC-AEG-300-YKWL1-RP
EAN	4712883212710	4712883212727	4712883212734	4712883212741	4712883212659
UPC	886027012086	886027012093	886027012109	886027012116	886027012123
Aegis Core (no display)	Black	White	Red	Blue	Yellow
P/N	BFC-AEG-300-KKWN1-RP	BFC-AEG-300-WKWN1-RP	BFC-AEG-300-RKWN1-RP	BFC-AEG-300-BKWN1-RP	BFC-AEG-300-YKWN1-RP
EAN	4712883212666	4712883212673	4712883212680	4712883212697	4712883212703
UPC	886027012130	886027012147	886027012154	886027012161	886027012178

Box Dimensions: 255 x 530 x 505 (mm WHD) - 10.03 x 20.86 x 19.88 ("WHD)			
Container	Without Pallet	With Pallet	QTY/Pallet
20'	431	352 (32x10+16x2)	32
40'	911	704 (32x22)	32
40' HQ	1033	792 (36x22)	36

AEGIS – black

With Bitfenix ICON™ display



AEGIS – white

With Bitfenix ICON™ display



AEGIS – red

With Bitfenix ICON™ display



AEGIS – blue

With Bitfenix ICON™ display



AEGIS – yellow

With Bitfenix ICON™ display



AEGIS CORE – black

With aluminum Bitfenix badge



AEGIS CORE – white

With aluminum Bitfenix badge



AEGIS CORE – red

With aluminum Bitfenix badge



AEGIS CORE – blue

With aluminum Bitfenix badge



AEGIS CORE – yellow

With aluminum Bitfenix badge



Contact Information

Follow us on twitter.com/bitfenix

Watch us on [Youtube.com/channel/UCfdjKWThe6vzzlj1kBG-ycA](https://www.youtube.com/channel/UCfdjKWThe6vzzlj1kBG-ycA)

Like us on Facebook!

[Facebook.com/bitfenix](https://www.facebook.com/bitfenix)

[Facebook.com/bitfenixUSA](https://www.facebook.com/bitfenixUSA)

[Facebook.com/bitfenixCanada](https://www.facebook.com/bitfenixCanada)

[Facebook.com/Bitfenix-Deutschland](https://www.facebook.com/Bitfenix-Deutschland)

[Facebook/BitfenixFrance](https://www.facebook.com/BitfenixFrance)

[Facebook/UKBitfenix](https://www.facebook.com/UKBitfenix)

[Facebook/BitfenixBenelux](https://www.facebook.com/BitfenixBenelux)

[Facebook/BitfenixItalia](https://www.facebook.com/BitfenixItalia)

[Facebook/BitfenixSverige](https://www.facebook.com/BitfenixSverige)

[Facebook/BitfenixSuomi](https://www.facebook.com/BitfenixSuomi)

[Facebook/BitfenixJapan](https://www.facebook.com/BitfenixJapan)

[Facebook/BitfenixVN](https://www.facebook.com/BitfenixVN)

[Facebook/BitfenixPhilippines](https://www.facebook.com/BitfenixPhilippines)

[Facebook/BitfenixIndonesia](https://www.facebook.com/BitfenixIndonesia)

[Facebook/BitfenixMSIA](https://www.facebook.com/BitfenixMSIA)

[Facebook/BitfenixLATAM](https://www.facebook.com/BitfenixLATAM)

[Facebook/BitfenixBrasil](https://www.facebook.com/BitfenixBrasil)



BITFENIX®

BE INVINCIBLE

Product Information: [Bitfenix.com](https://www.bitfenix.com)

Media Download: [Product Page](#) -> [Support](#)

Press registration: [Bitfenix.com/global/en/news/signup/](https://www.bitfenix.com/global/en/news/signup/)

support@bitfenix.com

sales@bitfenix.com

marketing@bitfenix.com

feedback@bitfenix.com