

EK-Quantum Kinetic FLT D5/DDC Body D-RGB



Before you start using this product please follow these basic guidelines:

Please carefully read the manual before beginning with the installation process!

The EK fittings require only a small amount of force to screw them firmly in place since the liquid seal is ensured by the rubber o-ring gaskets.

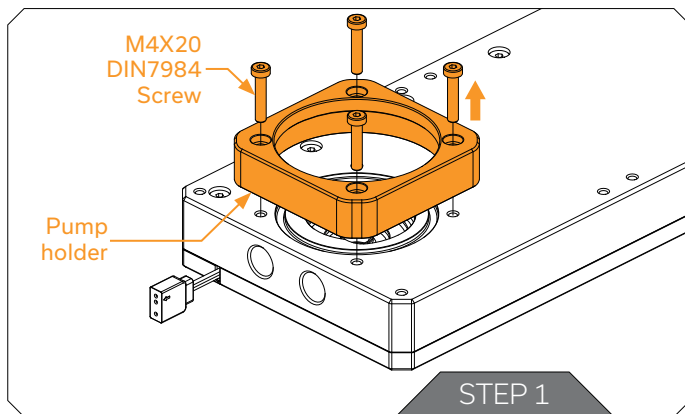
The use of corrosion inhibiting coolants is always recommended for any liquid cooling system. EKWB recommends any of the EK-Cryofuel for worry-free usage.

There are many ways to install your EK-Quantum Volume/Kinetic FLT D5/DDC Body as it utilizes a standard fan mounting hole pattern with 15mm spacing, the same as all EK radiators. The mounting holes have standard M4 threads with maximum engagement of 10mm. Use of longer screws or screws with incorrect threads such as those intended for fans or radiators may damage your product!

TABLE OF CONTENT

D5 PUMP VERSION	4
ATTACHING THE D5 PUMP ON TO THE RESERVOIR	4
DDC PUMP VERSION	5
ATTACHING THE DDC PUMP ON TO THE RESERVOIR	5
CONNECTING THE D-RGB LED STRIP	6
TESTING THE LOOP	7
SUPPORT AND SERVICE	8
SOCIAL MEDIA	8

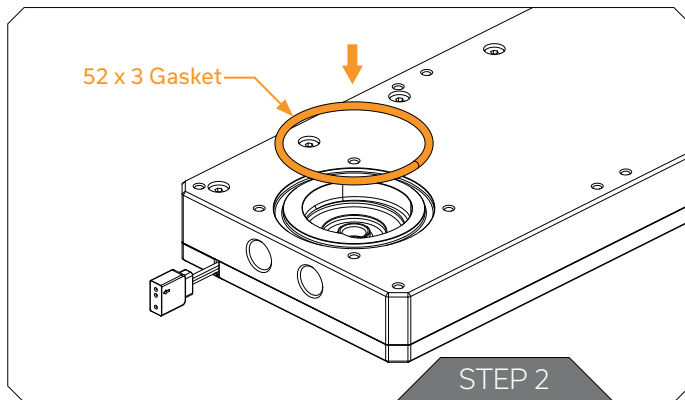
D5 PUMP VERSION



ATTACHING THE D5 PUMP ON TO THE RES- ERVOIR

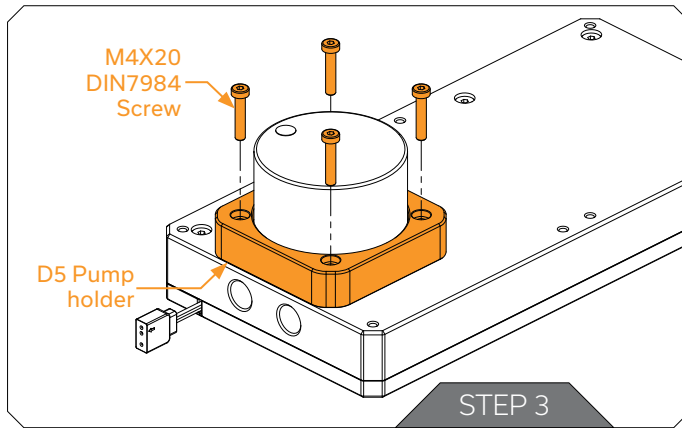
STEP 1:

Remove the preinstalled Pump Holder using 2.5mm Allen Key. Store the screws and pump holder for later use.



STEP 2:

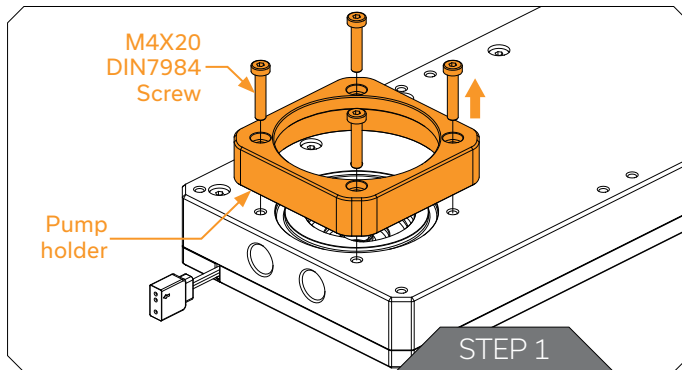
Make sure that the gasket(o-ring) is placed into the groove.



STEP 3

Carefully attach the D5 Pump and Pump Holder(as shown on the photo). After that, secure all the parts together with M4X20 DIN 7984 Screws. Tighten the screws using enclosed 2.5mm Allen Key.

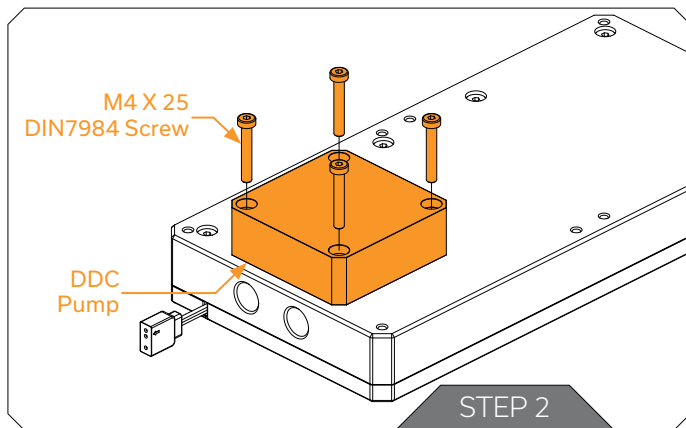
DDC PUMP VERSION



ATTACHING THE DDC PUMP ON TO THE RESERVOIR

STEP 1

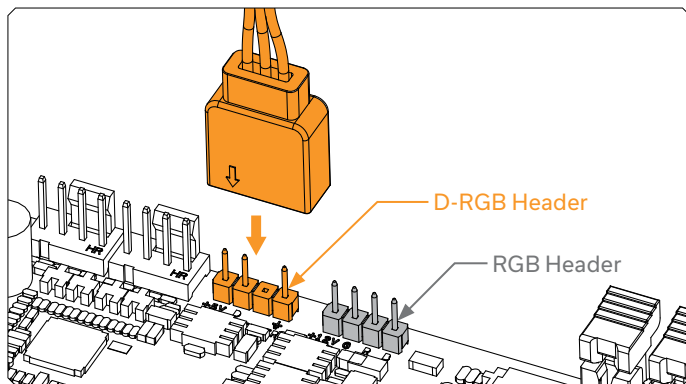
Remove the preinstalled Pump Holder and screws using 2.5mm Allen Key. Store the pump holder for later use.



STEP 2

Carefully attach the DDC pump and make sure that gasket (46x2.5) is placed correctly. Sealing gasket is included in additional bag. Secure the pump with four (4) M4 X 25 7984DIN screws (see sample photo). Tighten the screws using enclosed 2.5mm Allen Key.

CONNECTING THE D-RGB LED STRIP



Plug the 3-pin connector from the water block's D-RGB LED light in the D-RGB HEADER on the motherboard. The LED will work if the pin layout on the header is as follows: +5V, Digital.



Please ensure that the arrow indicated on the connector is plugged into the +5V line as indicated on your motherboard. Failure to do so will damage your motherboard or LED strip.

TESTING THE LOOP

To make sure the installation of EK components was successful, we recommend you perform a leak test for 24 hours.

When your loop is complete and filled with coolant, connect the pump to a PSU outside of your system. Do not connect power to any of the other components. Turn on the PSU and let the pump run continuously. It is normal for the coolant level to drop during this process as air collects in the reservoir.

Inspect all parts of the loop, and in the eventuality that coolant leaks, fix the issue and repeat the testing process. Ensure that all hardware is dry before the system is powered on in order to prevent any damage.


SUPPORT AND SERVICE

For assistance please contact:

<http://support.ekwb.com/>

EKWB d.o.o.
Pod lipami 18
1218 Komenda
Slovenia - EU


SOCIAL MEDIA

 EKWaterBlocks

 @EKWaterBlocks

 ekwaterblocks

 EKWBofficial

 ekwaterblocks

