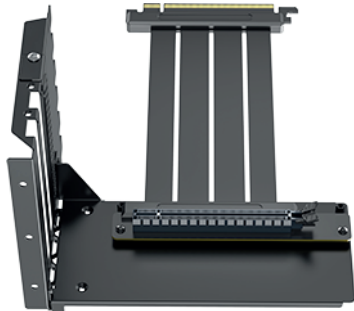


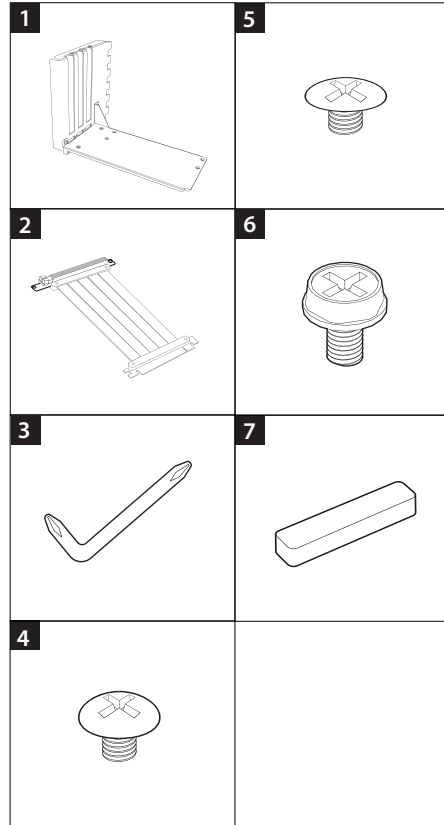
User Manual

PCI-E Riser Cable with Bracket Set



This product is only designed for XILENT X Case (X912.ARGB)!

Components List



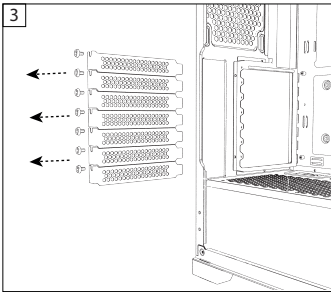
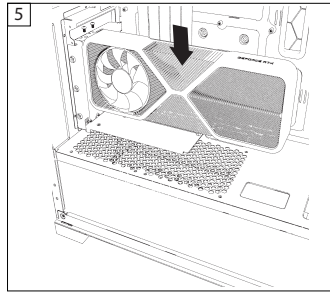
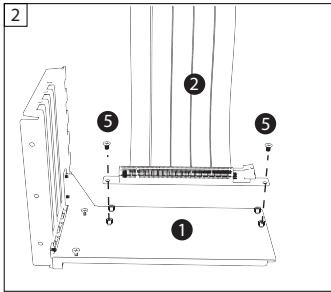
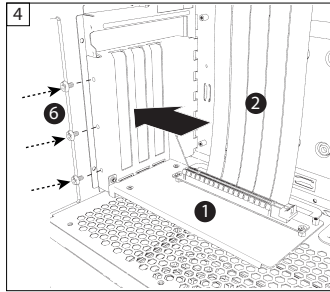
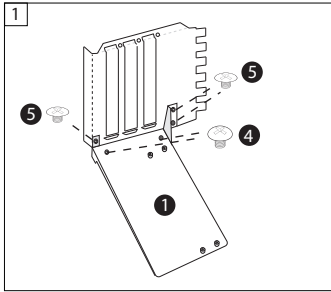
EN

- 1) L Shape Bracket x 1
- 2) PCI-E Riser Cable x 1
- 3) Screwdriver x 1
- 4) Mounting Screw A x 2
- 5) Mounting Screw B x 5
- 6) Mounting Screw C x 3
- 7) Pad x 1 (pre-installed)

DE

- 1) L Form Halterung x 1
- 2) PCI-E Riser Kabel x 1
- 3) Schraubendreher x 1
- 4) Schrauben A x 2
- 5) Schrauben B x 5
- 6) Schrauben C x 3
- 7) Polster x1 (vormontiert)

Installation Steps



EN

- 1) Assemble the bracket.
- 2) Install the riser cable to bracket.
- 3) Remove all PCI slots.
- 4) Install the bracket to the case.
- 5) Connect GPU to the riser cable.

DE

- 1) Bauen Sie die Halterung zusammen.
- 2) Installieren Sie das Riser Kabel an die Halterung.
- 3) Entfernen Sie den PCI-Steckplatz.
- 4) Installieren Sie die Halterung am Gehäuse.
- 5) Fixieren Sie anschließend die Grafikkarte.



Points de collecte sur www.quefairedemesdechets.fr

XILENCE GmbH

Lavesstr. 4, 31137 Hildesheim, Germany
 images may differ from the real product
 subject to change without prior notice
www.xilence.net
www.facebook.com/xilence

Item No. : XZ107

Mode No. : X9_Vertical GPU Set

