

Amica

WA 14680 W

INSTRUCTION MANUAL EN

WASHING MACHINE

Please read this User Manual carefully before using the appliance!

IO-WMS-0364
(10.2016./1)

CONTENTS

Basic Information.....	3
Notes on Safety.....	4
Installing the Washing Machine.....	7
Understanding the symbols on clothes labels.....	9
Description of control panel.....	11
Using the appliance.....	13
Table of programmes.....	14
Troubleshooting.....	16
Maintenance and Cleaning.....	18
Practical tips on washing.....	19
Specification.....	22
Product Fiche.....	23



In accordance with European Directive **2012/19/UE** and Polish legislation regarding used electrical and electronic goods, this appliance is marked with the symbol of the crossed-out waste container.

This marking means that the appliance must not be disposed of together with other household waste after it has been used. The user is obliged to hand it over to a waste collection centre collecting used electrical and electronic goods. The collectors, including local collection points, shops and local authority departments provide recycling schemes. Proper handling of used electrical and electronic goods helps to avoid

environmental and health hazards resulting from the presence of dangerous components and the inappropriate storage and processing of such goods.

BASIC INFORMATION

From today, washing will be easier than ever before. The Amica washing machine combines exceptional ease of use with excellent effectiveness. Once you have read the instructions, operating the washing machine will not be a problem.

Before being packed and leaving the factory, the safety and functions of this washing machine were carefully tested. These tests may have resulted in some damp or traces of water being left inside the machine.

We ask you to read the User Manual carefully before switching on the appliance. Following the directions in this manual will protect you from any misuse.

Keep this User Manual and store it near at hand. The instructions should be followed carefully to avoid any unfortunate accidents.



Important!

This washing machine is intended for purely domestic use to wash textiles and clothes which are designed to be machine washed in a detergent bath.

Before plugging the washing machine into the mains, remove the safety packaging and ensure the machine is level.

The manufacturer reserves the right to introduce changes which do not affect the operation of the appliance.

Use


- The machine should only be used after the instructions below have been read carefully.
- Never use the machine outdoors or anywhere the temperature may fall below freezing.
- The machine should not be operated by children or anyone who has not read the instructions.

Important! Temperatures below 0°C can damage the washing machine! In the event of the machine being stored or transported in sub-zero temperatures, it should be left to acclimatise in a temperature above zero for 8 hours before being used.

Manufacturer's Declaration

The manufacturer hereby declares that this product meets the requirements of the following European directives:

- Low Voltage Directive **2014/35/UE**,
- Electromagnetic Compatibility (EMC) Directive **2004/30/UE**,
- ErP Directive **2009/125/EC**,
- RoHS Directive **2011/65/UE**,

and has thus been marked with the  symbol and been issued with a declaration of compliance made available to market regulators.

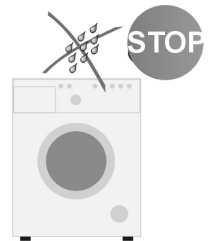
NOTES ON SAFETY

● Detergents Use only those detergents and additives which are designed for automatic washing machines, especially when using the **COTTON** programme. Do not use any agents containing solvents, as these may damage certain parts of the machine, or cause them to emit poisonous gases. There may also be a risk of ignition and explosion.

● Loading the Machine Ensure no unwanted objects are put inside the appliance. Completely empty all pockets in the clothing to be washed and fasten buttons and zips. Place small, loose objects in a washing bag, or inside a pillow case, as they may be destroyed or else damage the drum or internal tank. Do not exceed the recommended maximum load of washing.

● Control Panel Protect the control panel from water spillage.

Do not put washed clothes on top of the machine!



NOTES ON SAFETY

- Transport Unplug the machine before preparing the machine for transport. Do not transport the washing machine if drum locking bolts are not in place. See the chapter **INSTALLING THE MACHINE**. Keep the appliance in upright position when transported.
- Data Plate Data plate indicating basic information about the washing machine is located at the top part of the rear casing.
- Burns The door glass of your washing machine is hot during operation. Do not allow children in the vicinity of the appliance.

Checking stability

Once the washing machine is in position and levelled, it must be checked to ensure it rests firmly on all four legs.

In order to check this, press down each corner of the appliance in turn to see if it moves. Safe, long-term and reliable operation of the washing machine depends on it being correctly positioned and level.

NOTES ON SAFETY



Important! Level the appliance, remove the drum locking bolts and wait 3 hours before using the appliance for the first time.



Important! Incorrect levelling, especially instability, may cause the washing machine to move around during operation.

This appliance can be used by children aged from 8 years and above and persons with reduced physical, sensory or mental capabilities or lack of experience and knowledge if they have been given supervision or instruction concerning use of the appliance in a safe way and understand the hazards involved. Children shall not play with the appliance. Cleaning and user maintenance shall not be made by children without supervision.

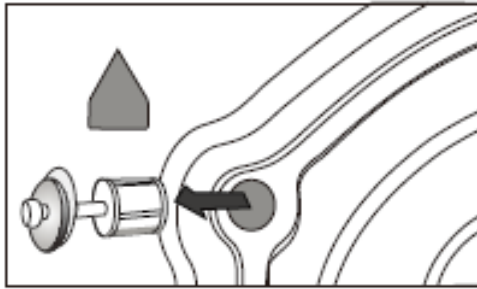
Children of less than 3 years should be kept away unless continuously supervised.

DISPOSAL OF THE APPLIANCE

To ensure safety, the washing machine must be rendered unsuitable for use once its useful life comes to an end. First unplug it and then cut off the power lead. Scrap the appliance in line with local waste disposal legislation.

INSTALLING THE MACHINE

I. Remove the protection used for transporting the appliance (keep the locking bolts for future use, e.g. when moving house).



- Unscrew the 4 locking bolts with a spanner.
- Remove the rubber and plastic transport brackets from the sockets along with the washers and bolts.
- Stop up the holes with the stoppers enclosed in the accessories bag.

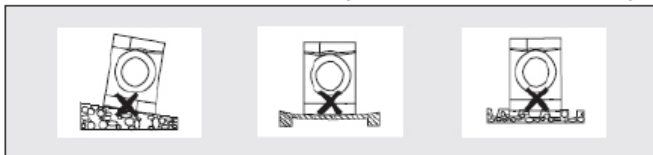


The locking bolts **MUST** be removed before the washing machine is used!

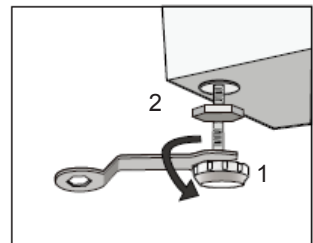
II. Positioning and levelling the machine



- Do not place the washing machine on a carpet!
- The floor surface should not be either concave or sloping!
- Attention should be paid to the shape of the surface of the floor, so that the entire weight of the appliance rests on its legs (not its body)!



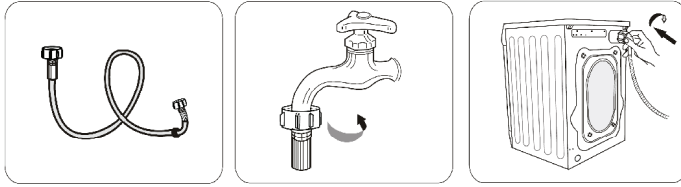
- Place the washing machine on a solid, even surface.
- Loosen the plastic washer (2)
- Level the machine by adjusting the legs (1)
- Lock with washers (2)



After positioning and levelling the machine, check that it is stable by pressing down each corner and ensuring it does not move!

INSTALLING THE MACHINE

III. Connecting the water supply



Use the new hoses supplied with the machine.
Do not re-use old hoses.

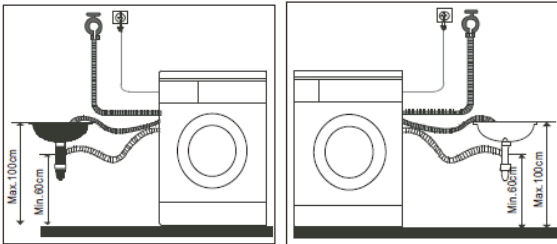
A water supply hose with seals is inside the drum of the machine.



Water pressure min. 0,05 MPa (0,5 bar), max.1 MPa (10 bar). Supply the machine with cold water

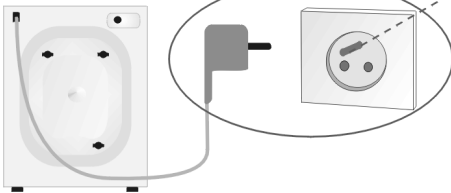
- after connecting, make sure the hose is not twisted
- after connecting the hose and the valve, check they are sealed tight
- regularly check the condition of the supply hose.

IV. Water drain



The drain hose is at the back of the machine. Fix the drain hose so that it does not move while the machine is in operation (use the elbow as shown below). Do not place the hose too deep into the outlet pipe!

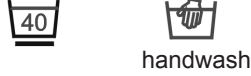
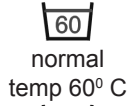
V. Connecting the electric power supply



- The appliance's mains connection (electrical wall socket) should be in a visible and accessible place!
- Only plug the machine into a properly installed socket with an earth pin!
- Do not connect to an adaptor or an extension cord!
- In the event of the power lead being damaged, it must be replaced by an authorised technician.
- The electrical system to which the appliance is to be connected must be protected with a 10 A fuse.

UNDERSTANDING THE SYMBOLS ON CLOTHES LABELS

I. Washing



II. Chemical cleaning



III. Spin dryer

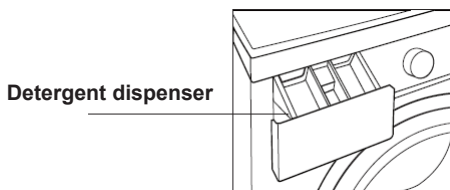
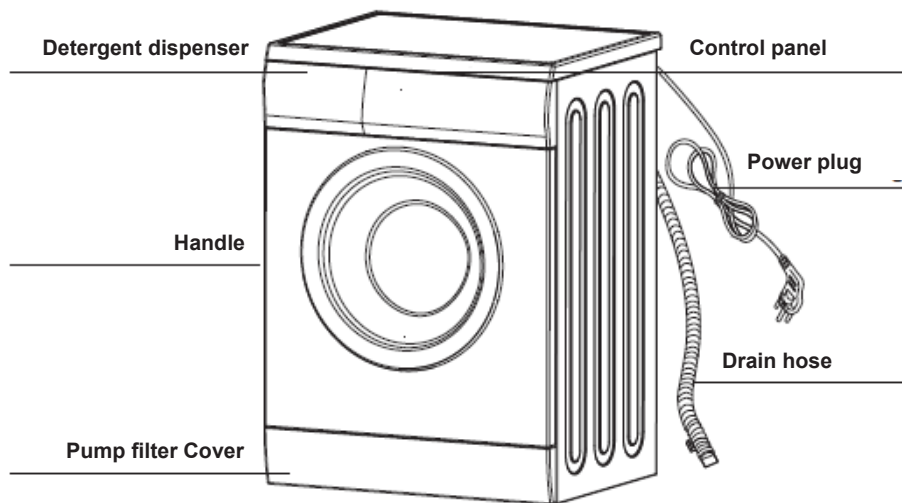


IV. Ironing

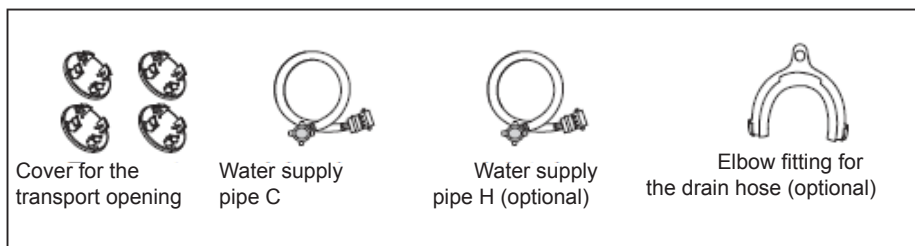


Always pay attention to the symbols on garments' labels when choosing a washing setting.

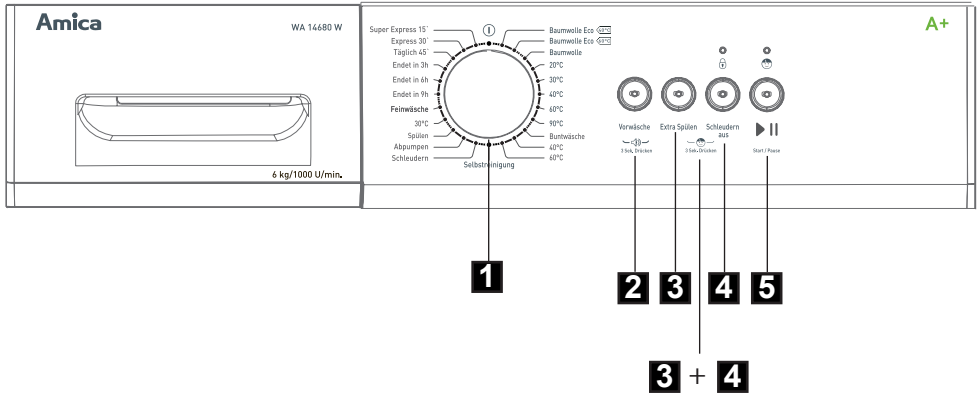
EXPLANATION OF THE LAUNDRY SYMBOLS ON LABELS



Accessories:



DESCRIPTION OF CONTROL PANEL



1. Programme selector dial

Choose the appropriate wash programme as required, depending on the degree of soil, and type and amount of laundry loaded, which ensures better results and more effective washing. Once the cleaning programme is started, turning the programme selector knob to another position is indicated by an acoustic signal however it does not change the previously selected programme.

2. Prewash

The laundry is prewashed before the main wash cycle begins. Use the Pre-wash to achieve excellent washing results without the need to soak the laundry. Pre-wash is recommended when washing heavily soiled laundry. The Prewash function can get an extra wash before main wash.

3. Extra Rinse

The function is especially useful when washing underwear and also clothes for people with sensitive skin. Select this option to add an extra rinse to wash cycle.

4. No Spin

The machine will not spin if you choose this function.

5. START/PAUSE button

Press Start/Pause to start or pause a programme.

During the washing cycle the corresponding programme phase symbol is flashing. In Pause mode, the symbols do not flash and are lit up continuously. The Pause mode can be used to soak the laundry.

Once the selected programme has started wait for about 10 minutes and then press the Start/Pause button. When the laundry is soaked as required, press the Start/Pause button again to resume the programme. Soaking will improve washing results for heavily soiled laundry.

DESCRIPTION OF CONTROL PANEL

3+4. Child lock

You can choose this function to prevent washing programme from misoperation by kids. Press “Extra Rinse” and “No Spin” simultaneously for 3 seconds to activate the child lock function during the running procedure, the buzzer will beep, all buttons as well as the rotary switch are locked.

Methods to cancel this function.

1 Press “Extra Rinse” and “No Spin” simultaneously for 3 seconds

2 unplug the washing machine

If you want to start another program on the child lock station, you should unlock the child lock first, and rotate the rotary switch to OFF position, then select the program you want.

Suppression of the acoustic signals

This is an additional buzzer function on your appliance. After deactivating the buzzer function, the buzzer will be closed. After starting the machine, press the “Prewash” button for 3 seconds and you will hear a beep, then the buzzer will be closed. To restart the buzzer function, press the “Prewash” button again for 3 seconds. The setting will be kept until the next reset.

Warning: After deactivating the buzzer function, the sounds will not be activated any more.

Bubble Removal Function

Bubble Check Function: Redundant bubbles will occur when there is excessive detergent, which will affect wash and rinse effects. The procedure will check automatically and one bubble removal procedure will be added automatically to remove bubbles when excessive bubbles are checked.

USING THE APPLIANCE

I. Select Programme

1. Load the laundry and add Detergent
2. Turn the rotary switch to select a program according to the program table.
3. Select optional function if needed
4. Press start/pause button.

II. End of the wash cycle

1. Washing machine informs about the end of the program sound signal, flashing LED "Start / Pause".
2. Turn off the water valve
3. Switch the machine off
4. Unplug the appliance from the mains.
5. Open the door and remove laundry.

III. Cancel or modify programme

Press the On/Off button to interrupt the programme. Then select the desired wash program again and press the Start/Pause button.

TABLE OF PROGRAMMES

Programme name	Max. temp. [°C]	Max. spin speed [RPM]	Max. load [kg]	Additional functions available		
				Prewash	Extra Rinse	Delayed start
Cotton ECO*	40°	1000	6,0	-	+	-
Cotton ECO *	60°	1000	6,0	-	+	-
Cotton	0	1000	6,0	+	+	-
Cotton	20°	1000	6,0	+	+	-
Cotton	30°	1000	6,0	+	+	-
Cotton	40°	1000	6,0	+	+	-
Cotton	60°	1000	6,0	+	+	-
Cotton	90°	1000	6,0	+	+	-
Synthetic	0	1000	3,0	+	+	-
Synthetic	40°	1000	3,0	+	+	-
Synthetic	60°	1000	3,0	+	+	-
Drum Clean	90°	400	-	-	-	-
Spin Only	-	1000	6,0	-	-	-
Drain Only	-	0	-	-	-	-
Rinse&Spin	-	1000	6,0	-	+	-
Delicate	30°	600	2,5	-	+	-
Delicate	0	600	2,5	-	+	-
Ends in 9	40°	1000	6,0	+	+	9h
Ends in 6	40°	1000	6,0	+	+	6h
Ends in 3	40°	1000	6,0	+	+	3h
Daily Wash 45'	30°	800	2,0	-	-	-
Daily Wash 30'	20°	800	2,0	-	-	-
Daily Wash 15'	0	800	2,0	-	-	-

* - standard programmes for washing cotton fabrics at 60°C and 40°C.

These programmes are suitable for washing normally soiled cotton fabrics. These are the most effective programmes for washing these type of fabrics, taking into account the total energy and water consumption.

Note: Real water temperature may differ from the declared wash cycle temperature.

Detergent drawer

			Type of laundry				
Prewash	Main wash	Fabric softener	Time [h:min]	Energy consumption [kWh]	Water consumption [l]	Number of rinse	
<input type="checkbox"/>	<input checked="" type="checkbox"/>	<input type="checkbox"/>	3:35	0,842	50	2	To increase the washing effects, main additional washing time is increased. It is recommended to wash the clothes for babies or worn by the persons with allergic skin.
X	●	○	3:52	1,280	50	2	
<input type="checkbox"/>	<input checked="" type="checkbox"/>	<input type="checkbox"/>	1:35	0,722	50	2	You can select this procedure to wash the daily washable clothes. The washing period is quite long with quite strong washing intensions. It is recommended to wash the daily cotton articles, for example: bed sheets, quilt covers, pillowcases, gowns, underwear etc.
<input type="checkbox"/>	<input checked="" type="checkbox"/>	<input type="checkbox"/>	1:19	0,284	50	2	
<input type="checkbox"/>	<input checked="" type="checkbox"/>	<input type="checkbox"/>	1:20	0,496	50	2	
<input type="checkbox"/>	<input checked="" type="checkbox"/>	<input type="checkbox"/>	1:40	0,727	50	2	
<input type="checkbox"/>	<input checked="" type="checkbox"/>	<input type="checkbox"/>	1:45	1,153	50	2	
<input type="checkbox"/>	<input checked="" type="checkbox"/>	<input type="checkbox"/>	2:40	1,840	50	2	
<input type="checkbox"/>	<input checked="" type="checkbox"/>	<input type="checkbox"/>	1:18	0,471	32	2	You can select this procedure to wash the quite delicate clothes. The procedure is shorter compared with that for cottons and the washing intension is quite gentle. It is recommended to wash synthetic articles, for example: shirts, coats, blending. As for curtains and faced textiles, the procedure "Synthetic" shall be selected. While washing the knitting textiles, detergent quantity shall be reduced due to its loose string construction and easily forming bubbles.
<input type="checkbox"/>	<input checked="" type="checkbox"/>	<input type="checkbox"/>	1:33	0,482	32	2	
<input type="checkbox"/>	<input checked="" type="checkbox"/>	<input type="checkbox"/>	1:43	0,770	32	2	
X	X	X	1:21	0,551	14	2	This cycle is specially set in this machine to clean the drum and tube. It applies 90 C high temperature sterilization to make the clothes washing more green. When this procedure is performed, the clothes or other washing cannot be added. When proper amount of chlorine bleaching agent is put in, the barrel cleaning effect will be better. The customer can use this procedure regularly according to the need.
X	X	X	0:12	0,030	0	-	Separate Spin Procedure. Soap water or rinse water shall be drained out before spinning.
X	X	X	0:01	0,001	0	-	Separate Drain only Procedure.
X	X	<input type="checkbox"/>	0:31	0,050	16	1	Separate Rinse&Spin Procedure.
X	<input checked="" type="checkbox"/>	<input type="checkbox"/>	1:00	0,247	29	2	You can select this procedure to wash your delicate clothes. Its washing intension is gentler and spin speed is lower compared with the procedure "Synthetic". It is recommended for the articles to be washed softly.
X	<input checked="" type="checkbox"/>	<input type="checkbox"/>	0:55	0,245	29	2	
X	<input checked="" type="checkbox"/>	<input type="checkbox"/>	9h (1:13)	0,327	32	2	The Function can be set with this programme, the total time including washing time and delaying time is 3h, 6h or 9h.
X	<input checked="" type="checkbox"/>	<input type="checkbox"/>	6h (1:13)	0,327	32	2	
X	<input checked="" type="checkbox"/>	<input type="checkbox"/>	3h (1:13)	0,327	32	2	
X	<input checked="" type="checkbox"/>	<input type="checkbox"/>	0:45	0,308	32	2	This procedure is suitable for washing few and not very dirty clothes quickly.
X	<input checked="" type="checkbox"/>	<input type="checkbox"/>	0:30	0,277	32	2	
X	<input checked="" type="checkbox"/>	<input type="checkbox"/>	0:15	0,028	26	2	

NOTE: Above mentioned time is an estimate and may differ from actual wash cycle time, depending on temperature, water pressure, load size, etc. The time is automatically updated during wash cycle. Displaying the same time for an extended period or abrupt changes are normal.

- Use detergent or fabric softener if necessary,
- Detergent required, without which washing will be ineffective.
- X Do not use detergent or fabric softener.

TROUBLESHOOTING

Status of Corresponding Indicators					Description	Reason	Solution
				Prewash	Door lock problem	Door is not closed properly	Restart after the door is closed
			Extra Rinse				
			No Spin				Please call up service line if there are still troubles.
			Pause/Start				
Flash	Off	Flash	Off	Off			
				Off	Water injecting problem when washing (water injecting time exceeds 7 minutes)	Tap is not opened or water flows too slowly. Inlet valve filter is blocked. Inlet pipe is twisted. If water is not supplied	Open the tap or wait till the water supply becomes normal. Check inlet valve filter. Straighten the water pipe. Check the other taps in the room.
Off	Off	Off	Flash	Off			
				Off			Please call up service line if there are still troubles.
				Off	Drain problem while washing (drain time exceeds 3 minutes)	Outlet hose is blocked or twisted. Drain pump is blocked	Wash and straighten outlet hose. Wash drain pump filter
Off	Off	Off	Flash	Off			
				Off			Please call up service line if there are still troubles.
Please call up the service line if there is any other problem.							

TROUBLESHOOTING

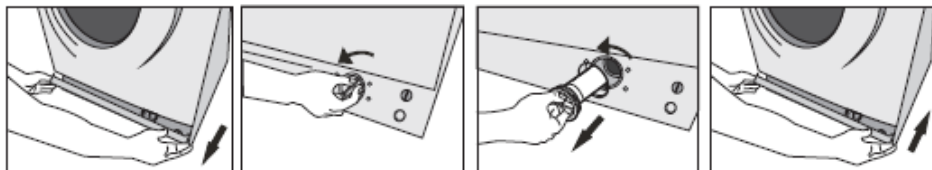
Troubles	Reason	Solution
Washing machine cannot start up		Check if the door is closed tightly. Check if power plug is inserted well. Check if water supply tap is opened. Check if button "Start/Pause" is pressed. Check if button "Power" is pressed.
Door cannot be opened	Machine's safety protection design is working.	Disconnect the power.
Heating fault	NTC is damaged and heating pipe is aging.	Can normally wash the clothes. Only cannot wash with heating. Shall contact the service center promptly.
Water leakage	The connection between inlet pipe or outlet hose and tap or washing machine is not tight. Drain pipe in the room is blocked.	Check and fasten water pipes. Clean up outlet hose and ask a specialized person to repair it when necessary.
Water is overflowed from the bottom of the machine	The inlet pipe is not connected firmly. Outlet hose has water leakage.	Fix the inlet pipe. Replace the drain hose.
Indicator or display does not light.	Power is disconnected. PC board has problems. Harness has connection problem.	Check if the power is shut down and power plug is connected correctly. If not, please call up service line.
Detergent residues in the box	Washing powder is dampened and agglomerated.	Clean and wipe the box. Use liquid detergents or the detergents special for drum.
Washing effects are not good	The clothes are too dirty. Insufficient detergent quantity.	Select a proper procedure. Add the proper detergent quantity according to the instructions in detergent package.
Abnormal noise Great vibration		Check if the fixing (bolts) has been removed. If cabinet is installed on the solid and level floor. Check if there are any barrettes or metal articles inside. Check if the legs in the washing machine are adjusted level.

MAINTENANCE AND CLEANING



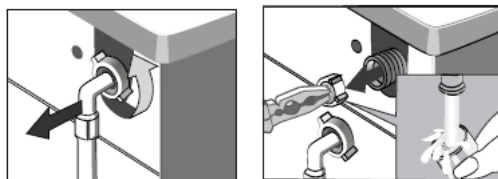
Never clean the product's casing or plastic parts using solvents or strong, abrasive cleaning agents (e.g. washing powders or creams)! Only use delicate liquid cleaning agents and soft cloths. Do not use sponges.

I. Cleaning the pump filter



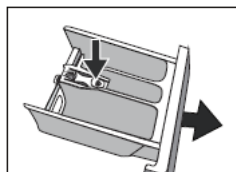
- Open the service panel
- Unscrew the pump cover
- Remove and clean the filter.
- Close the service panel

II. Cleaning the water supply valve

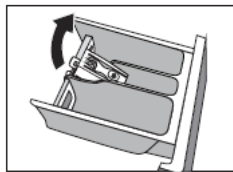


- Turn on the water supply hose,
- Use forceps to grasp the filter mesh plunger,
- Remove and clean the filter (using a brush).

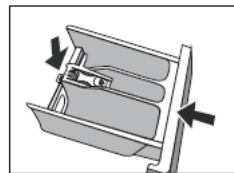
III. Cleaning the detergent drawer (at least once a month).



- Remove the drawer (while pressing the stop).



- Clean in running water (or using a brush or piece of cloth).

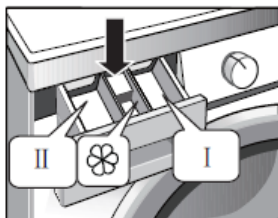


- Replace the drawer.

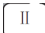
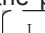
PRACTICAL ADVICE REGARDING WASHING

I. Cleaning and purifying agents

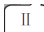

➤ **It is recommended to use powder or liquid general purpose detergents for all temperatures in a range as per the detergent Producer's recommendations indicated on the product packaging.**




Detergents

- Pour the detergent into the drawer compartment marked 
- Pour the pre-wash detergent into the drawer compartment marked 

Liquid detergents

- Install the supplied partition in the compartment  (figure below).
- Pour liquid detergent into the drawer compartment marked 

Fabric softeners added to the rinse

- Pour the fabric softener into the drawer compartment marked 
- Do not exceed the maximum level marked on the drawer compartment. This detergent will be used for the final rinse.

II. First wash

➤ Before washing for the first time, put it through one high temperature cycle without a load, according to the following procedure:

- Connect the washing machine to the electricity mains
- Turn on the water valve
- Set the programme selector knob to high temperature wash.
- Add the appropriate detergent and press the [Start/ Pause] button.

III. Soil

➤ **Stubborn stains**

Before washing garments, apply an additional stain remover according to the instructions for use

Heavily soiled:

- One-off washing of smaller amounts of clothes
- Add more detergent
- After washing heavily soiled clothes (e.g. working clothes) or garments which are shedding fibres, it is recommended that the washing machine is rinsed out by running a programme cycle at a temperature of 60°C, e.g. COTTON, without a load. Lightly soiled:
- See pt. „Conservation”.

IV. Conservation

➤ **Reducing energy and water consumption**

Garments which are only lightly soiled should be washed using the appropriate wash programme, i.e. **ULTRA SHORT**. The washing machine detects partial load. For partial load, when using the Towels and Cotton programmes, washing machine will reduce water and energy consumption and shorten the wash cycle.

PRACTICAL ADVICE REGARDING WASHING

- V. Water hardness ➤➤ Hard water causes sediment to form.
Information about water hardness is available from your nearest water works.
It is advised that water softeners are used for every wash.
- VI. Power cut (programme memory) ➤➤ Power cuts or unplugging the machine does not cancel the setting. This has been memorised and the cycle will continue once the power is restored. Do not open the doors of the washing machine during a power cut.
- VII. Loading ➤➤ Maximum drum capacity 6 kg:
Load the washing into the drum according to the following instructions:
●cotton, denim, children's clothes – max full drum (do not force clothes into the drum as this will reduce the quality of the wash!).
●synthetics - max 1/2 drum
●wool, silk, delicate fabrics - max. approx. 1/3 of the drum.
Important! Do not overload the machine! Overloading the machine may cause damage to the clothes being washed!
The maximum load amounts depending on the program are given in table of programs.
- VIII. Even load distribution control ➤➤ The electronic control panel incorporates a balance control system. Load distribution measurement is taken at the beginning of the washing cycle. Washing machine drum rotates for about 4 minutes and then the wash cycle begins. Before spinning, the system checks the distribution of clothes inside the drum. In the event that too great an imbalance is discovered, it makes several attempts to rearrange the clothes inside the appliance. Sometimes these attempts may be insufficient to properly rearrange the clothes (in the case of towelling dressing gowns washed along with other types of garments, or sheets which have wrapped up in a ball with other items inside).
The system may then react in two ways:
●accept the uneven distribution of garments and reduce spin speed,
●determine that the garments are distributed too unevenly and not allow the spin cycle to proceed.
In either case, after washing cycle is finished open the appliance door, remove the laundry by hand, close the door and select the spin setting again.

PRACTICAL ADVICE REGARDING WASHING

IX. Door interlock

➤ The washing machine is equipped with an interlock which prevents the door from being opened during washing. Once a washing cycle is complete, the door interlock is automatically released.

In order to open the door during the wash program, press PAUSE button and wait to unlock the door.

IMPORTANT! If the temperature inside the drum is high, the door may remain blocked until the water temperature has dropped below 60°C.

IMPORTANT! Before opening the door of the washing machine check whether there is water in the drum.

X. Delicate fabrics

➤ Programme:

- Select the appropriate wash programme (DELICATE)

Loading:

Do not overload the machine, max 1/3 of the drum, see Loading.

XI. Dosing

➤ According to the cleaning agent manufacturer's instructions.
Too little cleaning agent

- The washing turns grey.

- Lumps of grease form, sediment builds up.

Too much cleaning agent

- Strong foaming.

- Ineffective washing, detergent incompletely rinsed from fabrics.

SPECIFICATION

-Type	WA 14680 W
-Rated voltage	220-240V / ~50Hz.
-Rated power	1950 W
-Current protection	10 A
-Drum capacity	max 6 kg
-Water pressure	min 0,05 MPa (0,5 bar) max 1 MPa (10 bar)
-Dimensions/Height/Breadth/ Depth	850 / 595 / 470 [mm]
-Weight	54 kg
-Meets the requirements of EU legislation, standard.	EN 60456

Testing for label information in accordance with EN 60456 using the standard cotton wash programmes:

- Cotton 60°C at full load
- Cotton 60°C at partial load
- Cotton 40°C at partial load

- average annual water consumption is **9240** litres,
- weighted average electricity consumption is **196** kWh/year

PRODUCT FICHE

Pursuant to a Delegated Regulation of the Commission (EU) No. 1061/2010 of 28 September 2010 supplementing the Directive of the European Parliament and of the Council 2010/30/EU on the energy labelling of household washing machines and Regulation of the Commission (EU) No. 1015/2010 of 10 November 2010 on the implementation of the Directive of the European Parliament and of the Council No. 2009/125/EC on the Eco design requirements for the household washing machines).

Supplier's name or trade mark	Amica
Type	WA 14680 W
Rated capacity	6,0 kg
Energy efficiency class ¹⁾²⁾	A+
Weighted annual energy consumption AE_c ³⁾	196 kWh/year
Energy consumption of the standard cotton programme:	
- 60°C at full load $E_{t,60}$	1 kWh
- 60°C at partial load $E_{t,60/2}$	0,8 kWh
- 40°C at full load $E_{t,40/2}$	0,77 kWh
Power consumption of the off-mode P_o	0,5 W
Power consumption of the left-on mode P_l	1 W
Weighted annual water consumption AW_c ⁴⁾	9240 l
Water consumption of the standard cotton programme:	
- at 60°C, full load $W_{t,60}$	48 l
- at 60°C, half load $W_{t,60/2}$	37 l
- at 40°C, half load $W_{t,40/2}$	37 l
Spin-drying efficiency class ²⁾	C
Residual humidity D	61 %
Maximum spin speed attained ²⁾	1000 rev / min
Duration of the standard 60°C cotton programme at full and partial load	223 min
Duration of the standard 60°C cotton programme at partial load	210 min
Duration of the standard 40°C cotton programme at partial load	204 min
Noise Level:	
- during the wash cycle	59 dB(A) re 1 pW
- during the spin cycle	74 dB(A) re 1 pW
Equipment designed for fitting	No

¹⁾ Energy efficiency class on a scale from A+++ (more efficient) to D (less efficient).

²⁾ For a standard Cottons 60°C and 40°C intensive wash programme at full and partial load.

³⁾ Estimated weighted annual energy consumption based on 220 standard wash cycles for Cottons 60°C and 40°C intensive wash programmes at full and partial load and energy consumption in power saving modes. Actual energy consumption depends on how the appliance is used.

⁴⁾ Estimated weighted annual water consumption based on 220 standard wash cycles for Cottons 60°C and 40°C intensive wash programmes at full and partial load. Actual water consumption depends on how the appliance is used.
