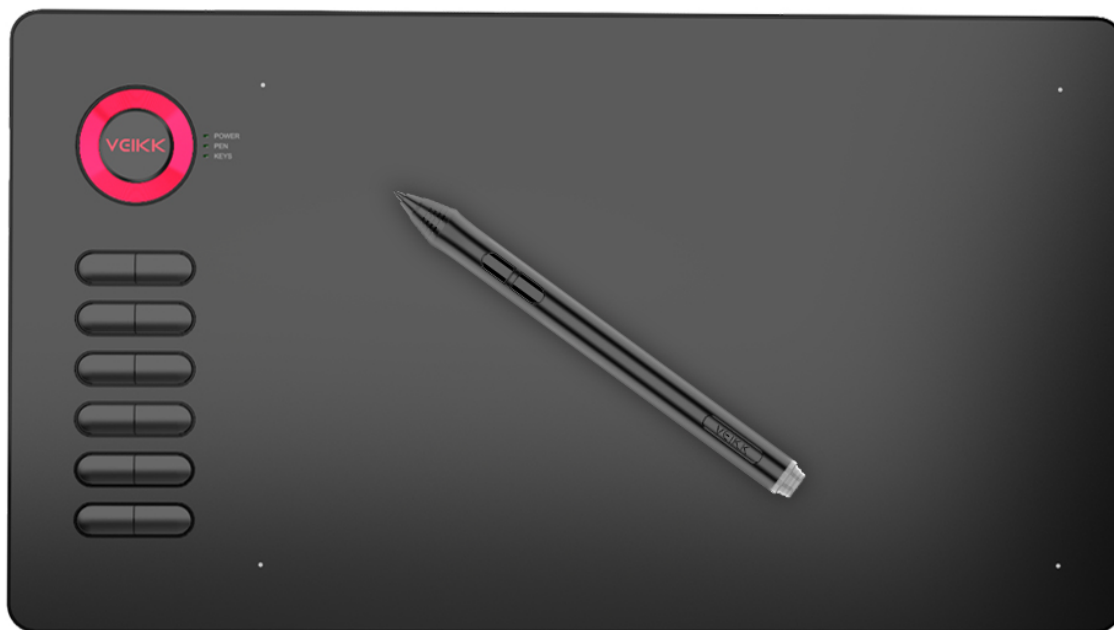


VEIKK



User Manual

BATTERY-FREE PEN TABLET

A15 Graphic Pen Tablet

www.veikk.com

Safety Precautions

- ⊘ **Do not use this product in a control system that requires a high degree of safety and reliability.**

In such a system, this product could negatively affect other electronic devices and could malfunction due to the effect of those devices.

- ⚠ **Turn the power off in areas where use of electronic devices is prohibited.**

On board an aircraft or in any other location where use of electronic devices is prohibited, this product, if left on, could negatively affect other electronic devices.

- ⊘ **Do not use this product in a location frequented by little children.**

Make sure that a child does not put the pen or pen tip in his/her mouth.

The pen tip or side switch cover could be detached and be accidentally swallowed.

- ⊘ **Do not place this product on an unstable surface.**

Placing this product on an unstable or tilted surface or in a location exposed to excessive vibrations could cause it to fall off resulting in injury.

⊘ **Do not place heavy objects on top of this product.**

Do not step or place heavy objects on this product as this could damage it.

⚠ **Avoid high or low-temperature locations for storage.**

Do not store this product in a location where the temperature drops below 5 °C or goes above 40 °C and in locations subject to excessive temperature fluctuations. Failure to heed this caution could result in damage to the product and its components.

⊘ **Do not disassemble.**

Do not disassemble or modify this product as this could expose you to heat, fire, electric shock and injury. Disassembling the product will also void your warranty.

⊘ **Do not use alcohol for cleaning.**

Never use alcohol, thinner, benzene or other mineral solvents as they could discolor or cause deterioration to the product.

⊘ **Do not expose to water.**

Do not place glasses or vases filled with water or other liquids near this product. Exposure to water or liquid could damage the product.

⊘ **Do not place metal objects on this product during operation.**

Placing metal objects on this product during operation could cause it to malfunction or damage it.

⊘ **Do not strike the pen against hard objects.**

Striking the pen against hard object could damage it.

⊘ **Do not handle the pen with soiled hands.**

The pen is a high-precision instrument. Handling it with soiled hands or using it in locations exposed to dust or strong odors may cause the entry of foreign matter which will result in breakdown.

Limitation of Liability

VEIKK shall in no event be liable for damages resulting from fires or earthquakes, those caused by third parties and those arising from user misuse, abuse or neglect.

VEIKK shall in no event be liable for incidental damages-including but not limited to loss of business income, interruption of business activities, corruption or loss of data-that arise out of the use or failure to use this product.

VEIKK shall in no event be liable for damages resulting from uses not documented in this manual.

VEIKK shall in no event be liable for damages from malfunction caused by connection to other devices or use of third party software.

Catalog

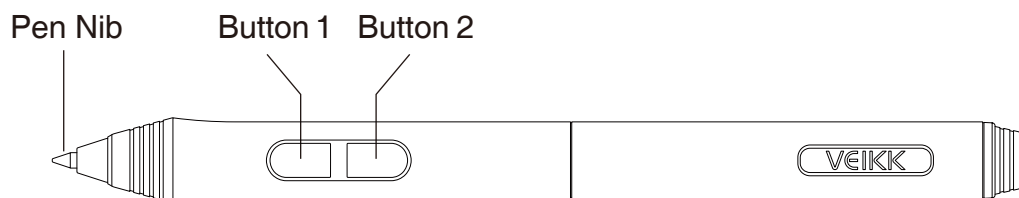
1.Product Overview.....	1
2.Packing List.....	2
3.Installing Driver.....	2
4.Tablet Connection.....	3
5.Replacing the Nibs.....	4
6.Specifications.....	4
7.Driver Settings.....	5

1.Product Overview



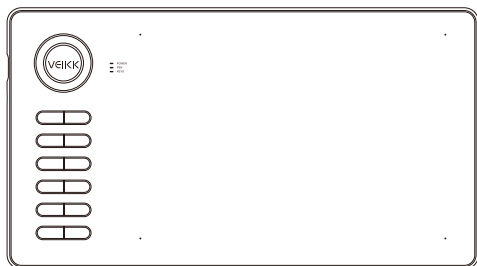
- ① VEIKK Logo
- ② USB Port
- ③ LED Indicator
- ④ Shortcut Keys
- ⑤ Active Area

Pen



Note: The passive pen requires neither battery nor charging.

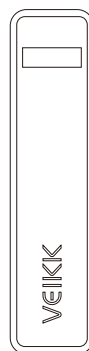
2.Packing List



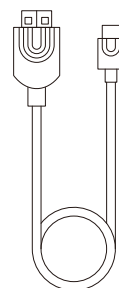
A15 Pen Tablet



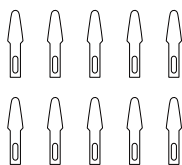
Battery-free Pen



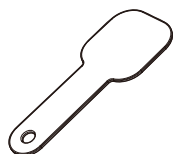
Pen Pocket



USB-A to USB-C
Cable



Pen Nibs



Nib Removal



Driver Download
Reminder



Quick Start Guide

3.Installing Driver

3.1 OS Support

Windows 11/10/8/7(32/64 bits) / Mac OS 10.12 or later

Linux OS / Chrome 88 or later

Android 6.0 or later (Except Samsung Android device)

3.2 Installation

For Mac OS, Windows and Linux OS computer:

1. Before installing the driver, please uninstall all tablet drivers from your computer and keep all antivirus programs and the drawing software closed.
2. Connect the tablet to your computer before installation (Please refer to 4.Tablet Connection).
3. Please download the driver from www.veikk.com.
4. Click Set up.exe and follow onscreen instructions.
5. Restart your computer after installation.

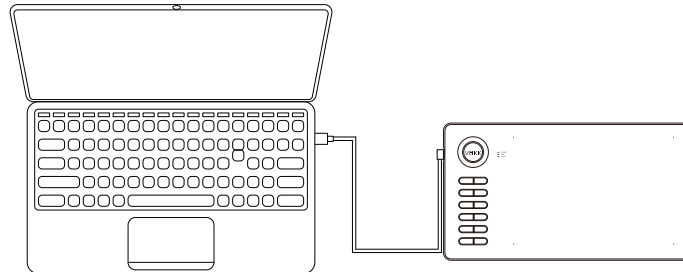
For Chrome OS computer and the Android mobile phone:

No need to install VEIKK driver on the Chrome OS computer and the Android mobile phone.

4. Tablet Connection

For Mac OS, Windows and Linux OS computer:

1. Connect the tablet to your computer with USB cable.
2. Open the driver interface. If the product model shows at the upper left corner, this indicates that the tablet has been connected successfully. You can start using your tablet.



For Chrome OS computer:

Connect the tablet to your Chrome OS computer with the USB cable, then you can start using your tablet.

Note: The shortcut keys of the pen and tablet can't work on the Chrome OS computer.

For Android mobile phone:

1. Please connect the tablet to your mobile phone with the OTG adapter.
2. Choose the most comfortable way you like to use the tablet.
 - A. By default, the working area of the tablet is 10*6 inch, but you need to rotate the tablet as shown in Figure 1.
 - B. Press K1 and K12 at the same time, the working area of the tablet is 3*6 inch, but you can use the tablet in the normal direction as shown in Figure 2.

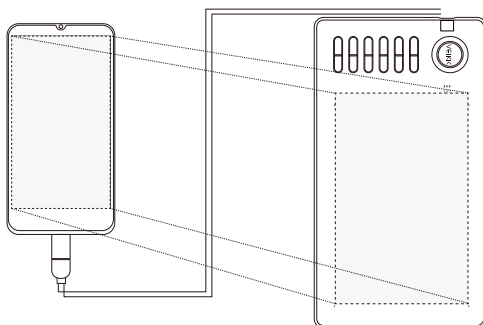


Figure 1

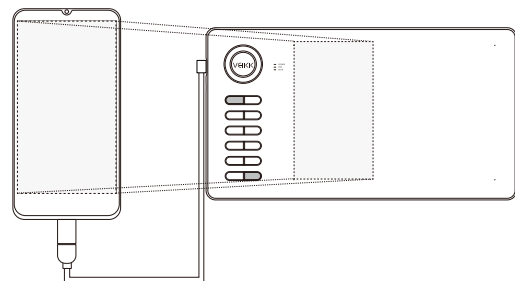


Figure 2

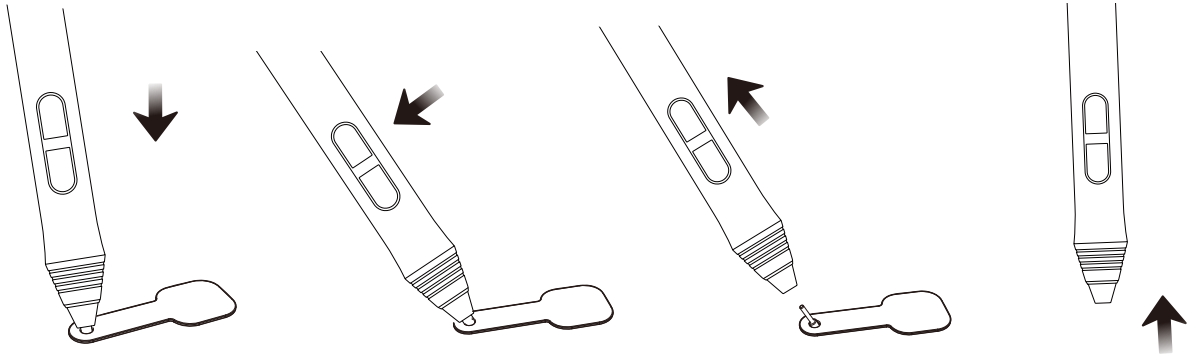
Note1: Works in mobile phone vertical screen mode only.

Note2: For some mobile phones, you need to enable the OTG function manually in the phone's settings.

Note3: The shortcut keys of the pen and tablet can't work on Android mobile phone.

5.Replacing the Nibs

When the pen nib is heavily worn, please replace the nib with the nib removal.



1. Insert the pen nib into the pen holder hole
2. Tilt the pen so that the pen holder can fully catch the pen nib
3. Pull out the nib
4. Insert a new nib into the pen and push it straightly until it stops

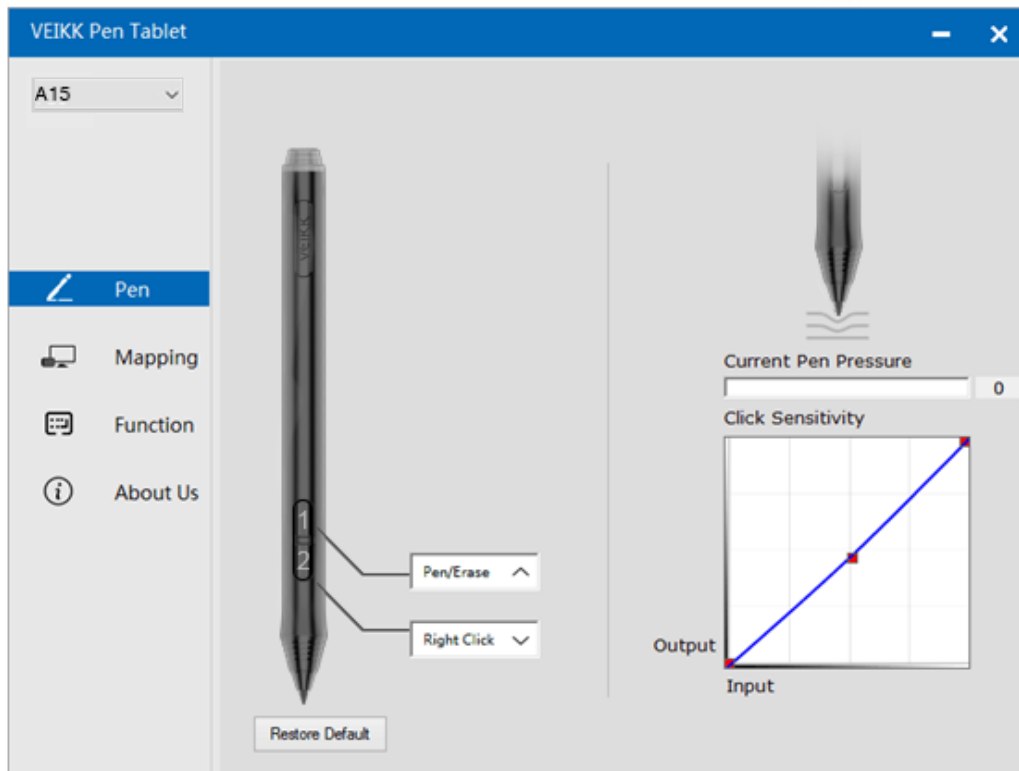
6.Specifications

Model	A15
Dimension	358 mm × 200 mm × 9 mm
Working Area	10 x 6 Inch
Pressure Sensitivity	8192 Levels
Resolution	5080 LPI
Reading Height	10 mm
Interface	USB
Keys	12 Shortcut Keys

7.Driver Settings

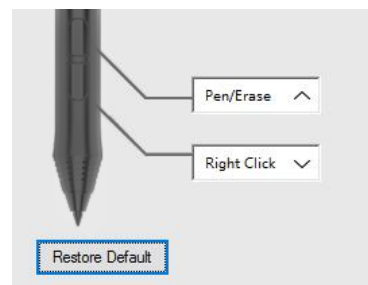
Windows:

7.1 Pen:



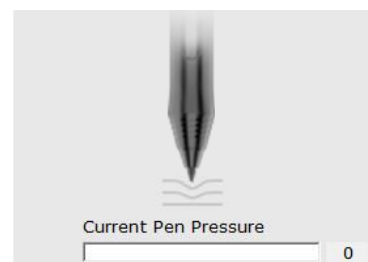
7.1.1 Pen Function Settings

You may customize the functions of pen buttons. Use the “Pen” option to program custom keystrokes.



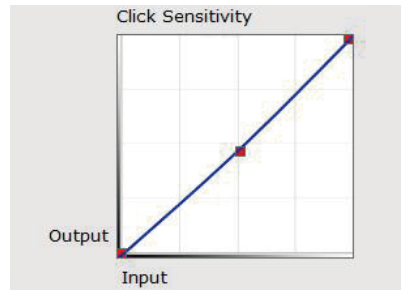
7.1.2 Current Pen Pressure

Current Pen Pressure shows the current pressure level being exerted on your tablet and can be used to test pen pressure.



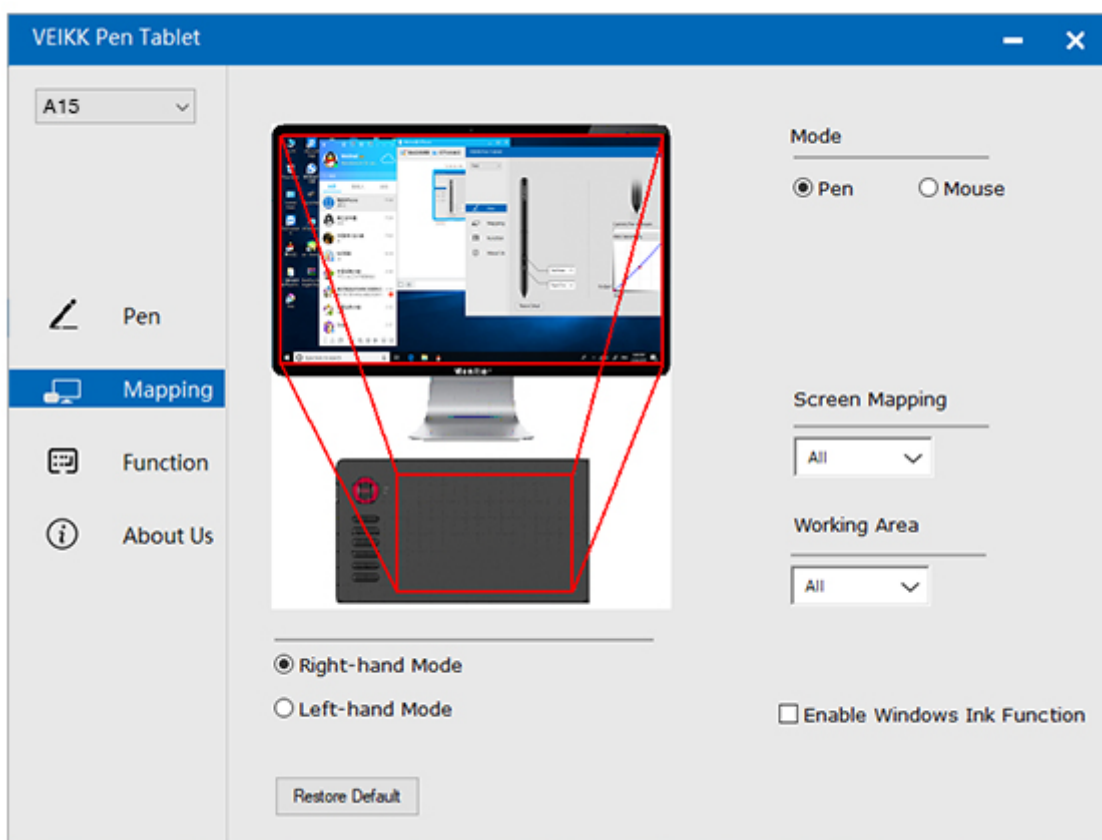
7.1.3 Click Sensitivity

You can adjust pen pressure to “Output” or “Press” sensitivity on here.



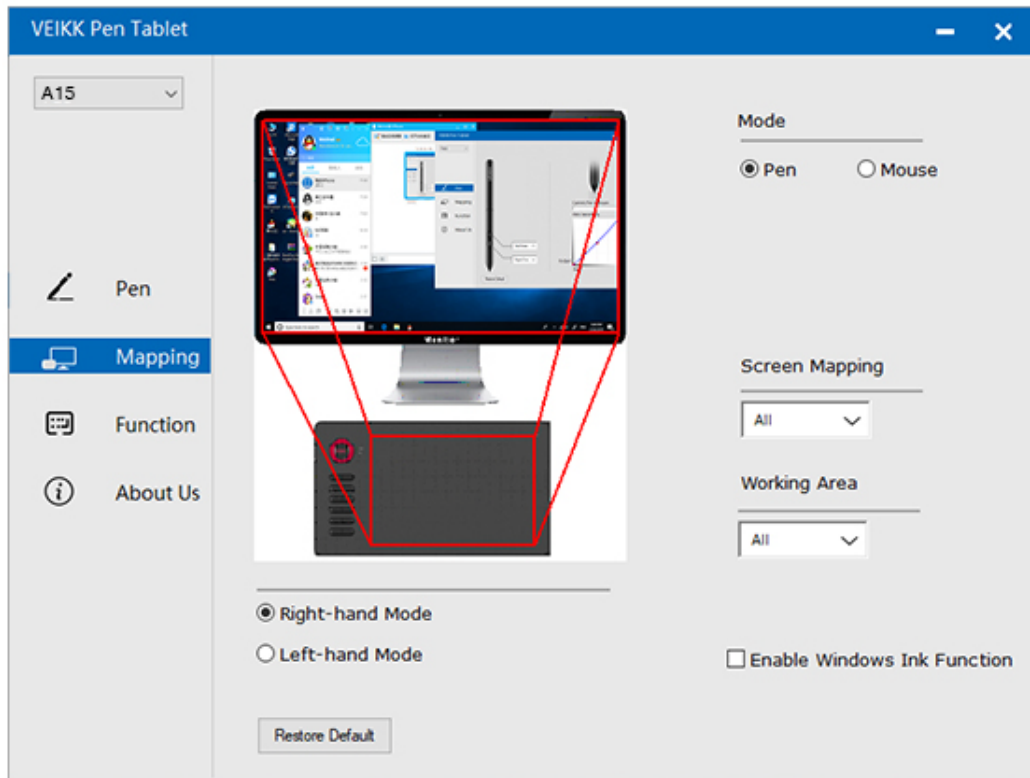
7.2 Mapping

Define the tablet area that will be mapped to the screen area.

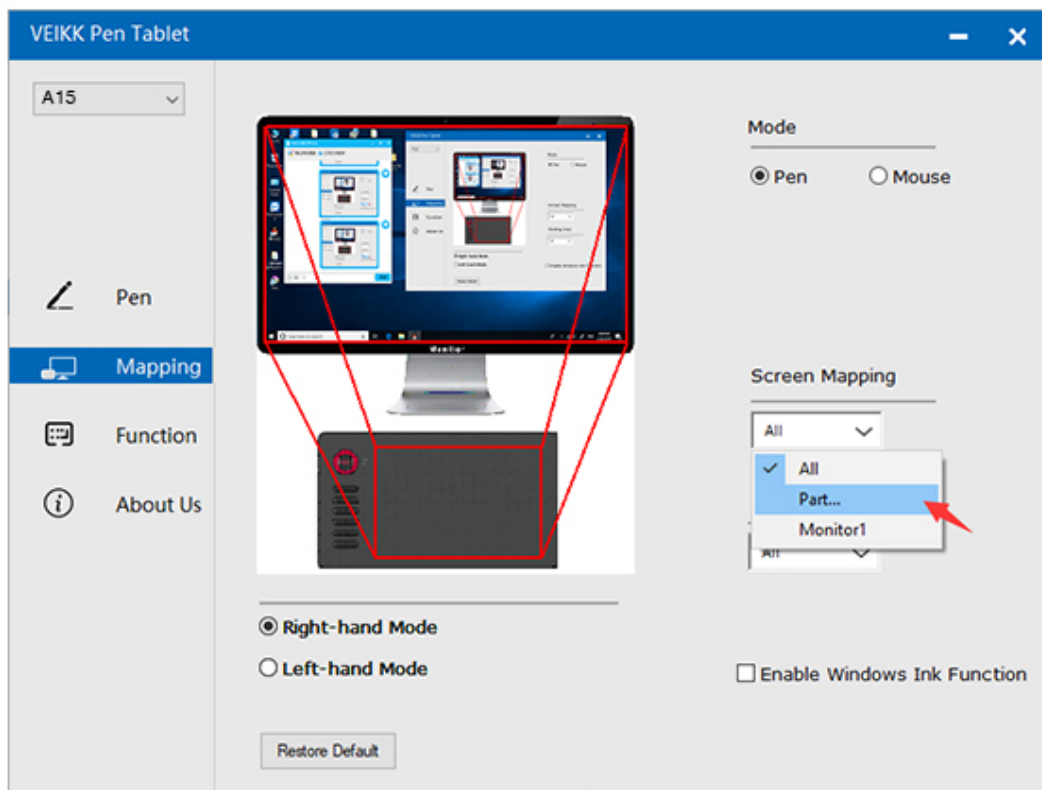


7.2.1 Screen Mapping

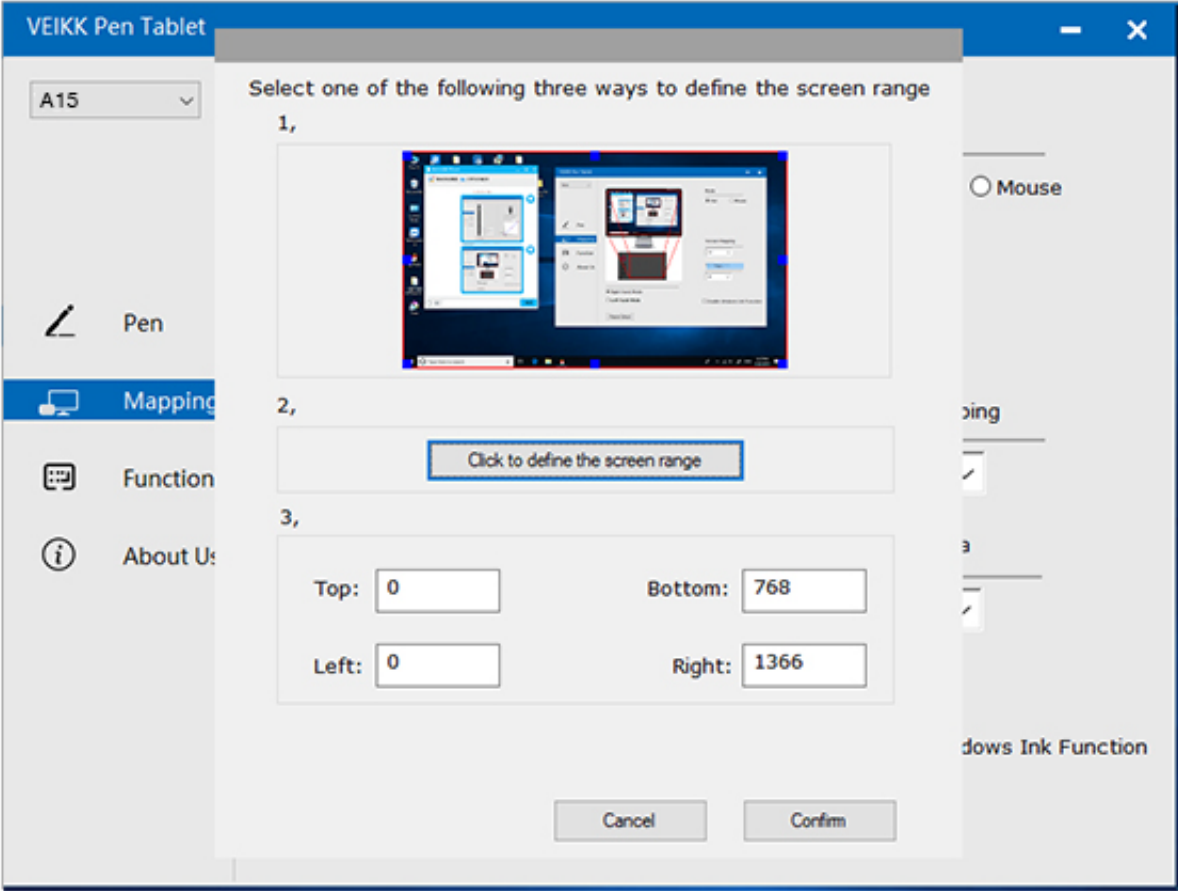
All Area: the entire active area of the tablet. This is the default setting.



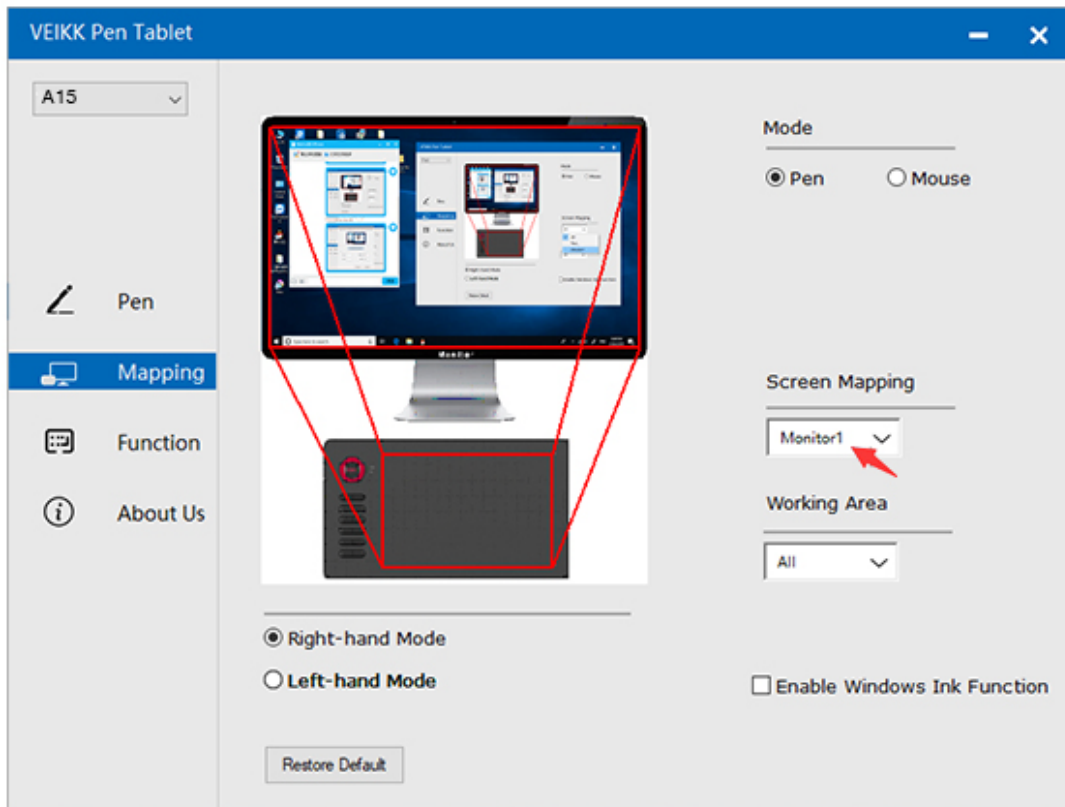
Part Area: Click Part



Then go to the next page, select one of the following three ways to define the screen range.

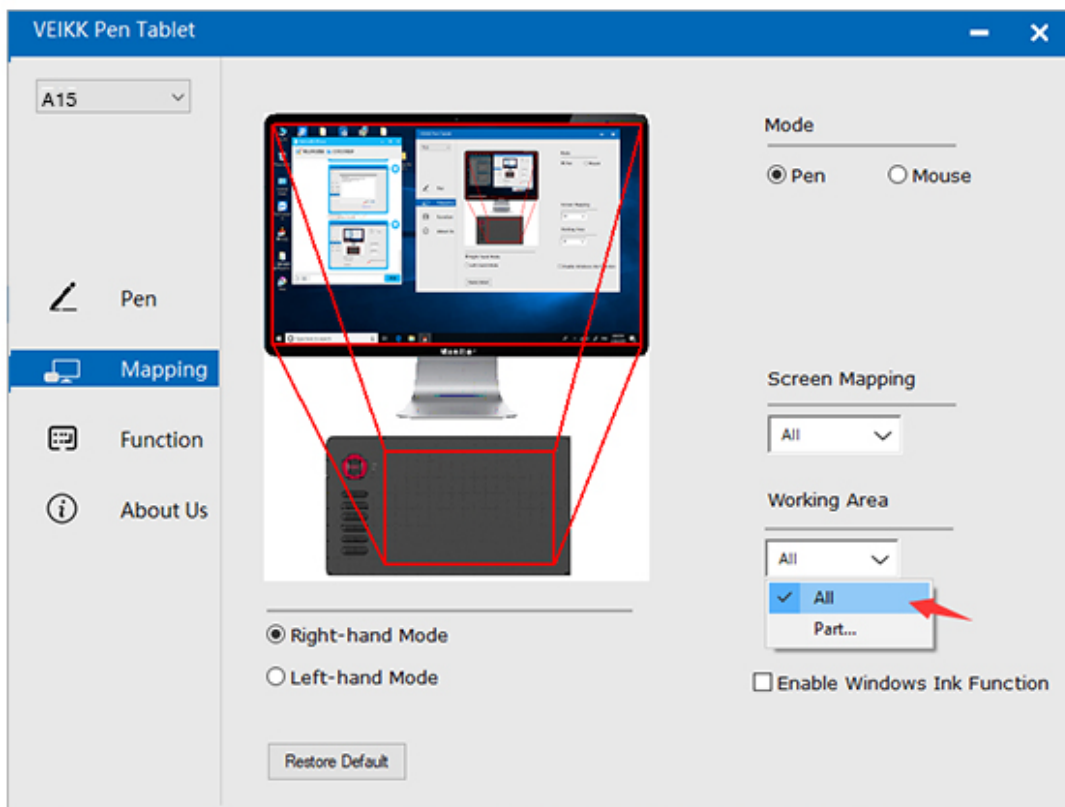


Monitor1: If more than one monitor is in use and you are in extended mode, you need to choose the related monitor on the driver interface which you are going to map to. If your monitors are in mirror mode(All monitors display the same content), the tablet maps to the entire space on each monitor and the screen cursor is displayed on each monitor simultaneously.

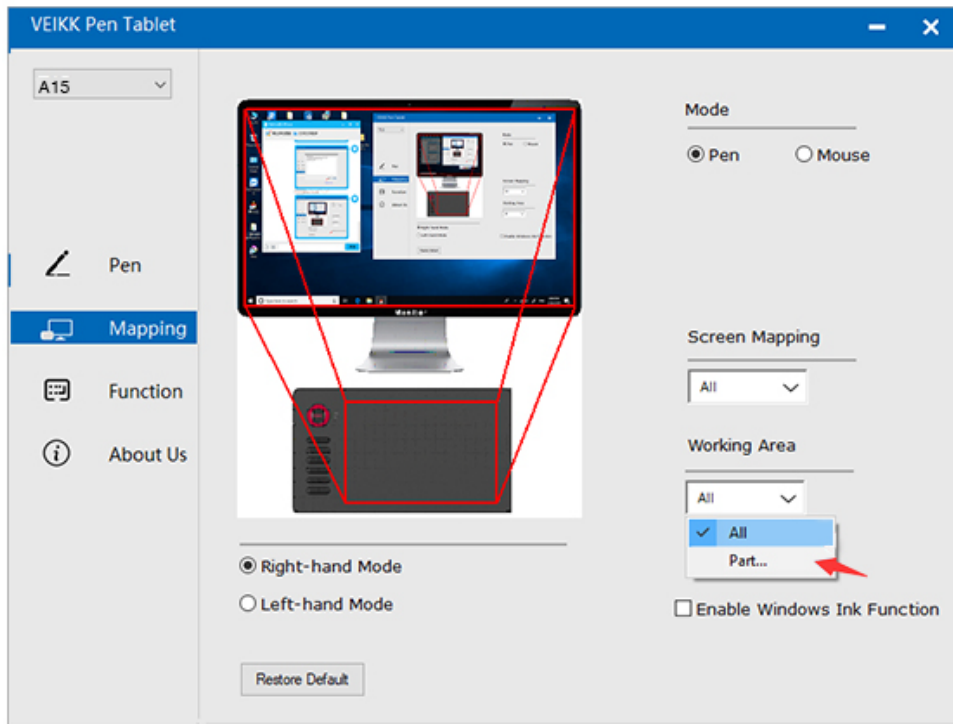


7.2.2 Working Area

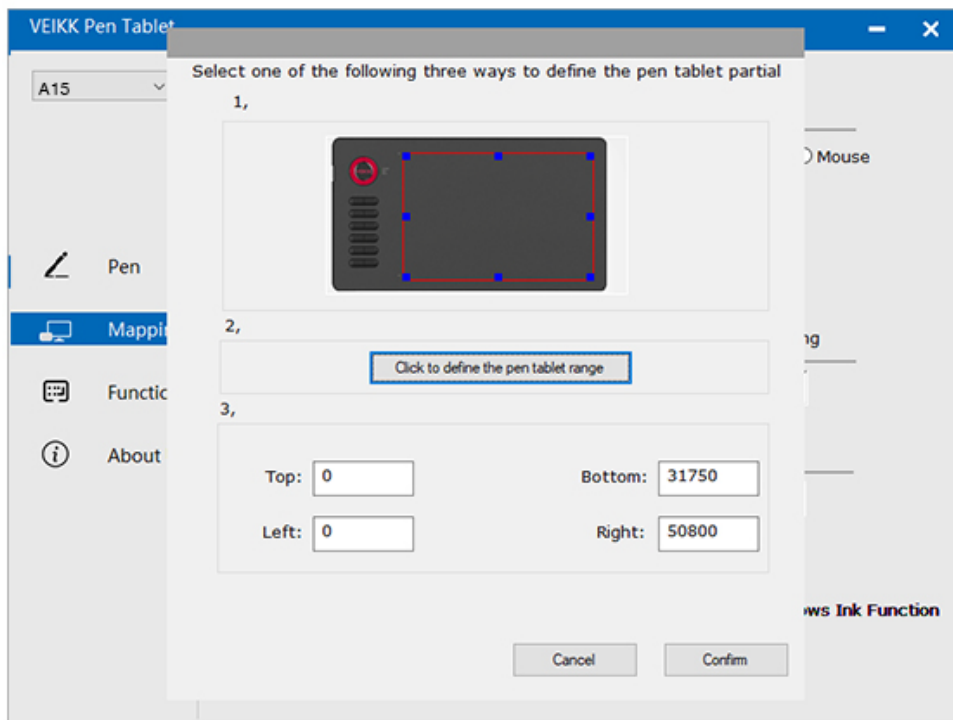
All Area:the entire active area of the tablet.This is the default setting.



Part Area:Click Part

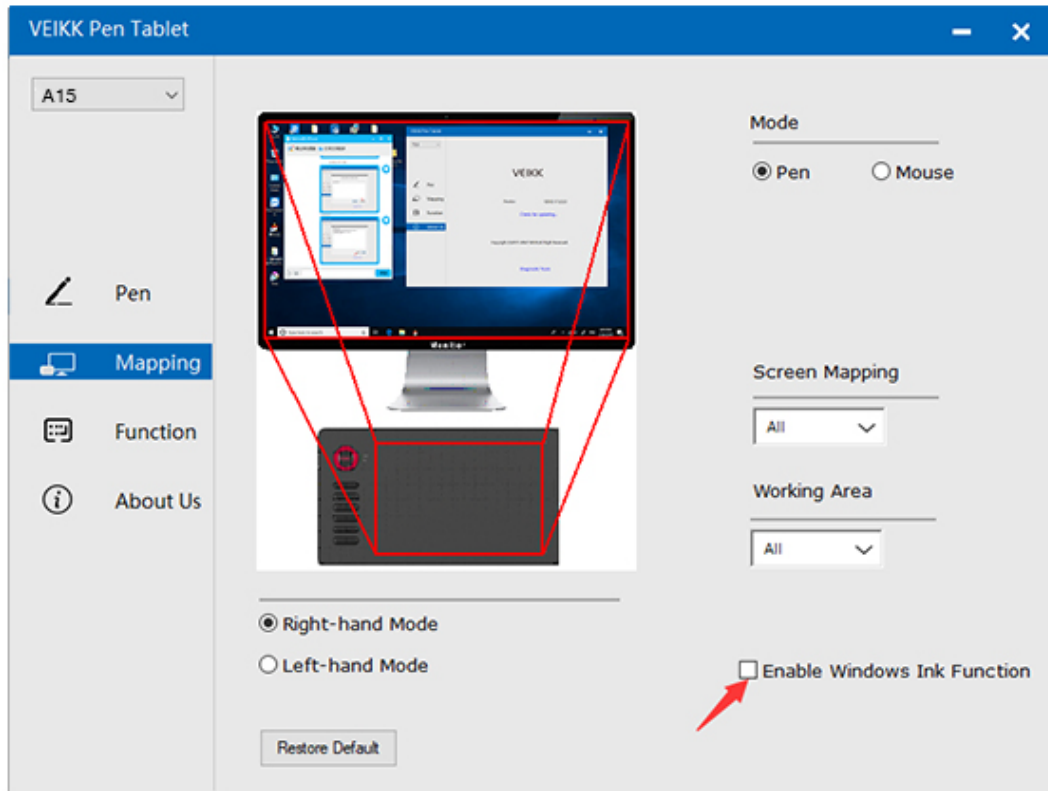


Then go to the next page, select one of the following three ways to define the pen tablet partial.



7.2.3 Enable Windows Ink Function

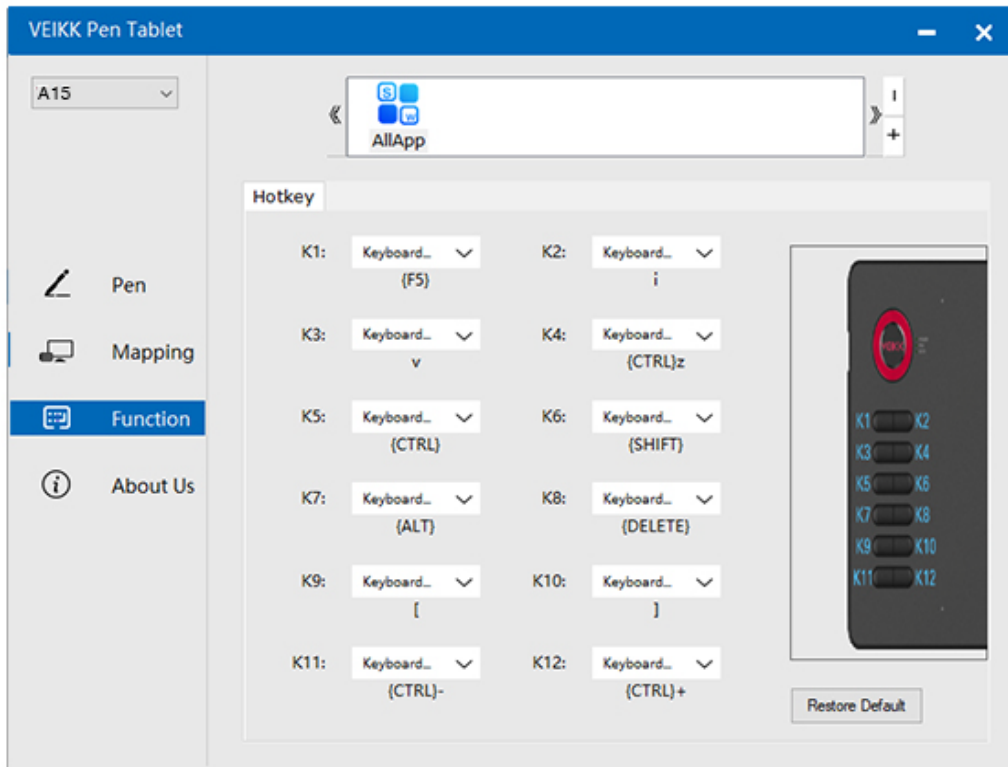
Microsoft Windows provides extensive support for pen input. Pen features are supported in such as Microsoft Office, Adobe Photoshop CC, AI and so on.



7.3 Function

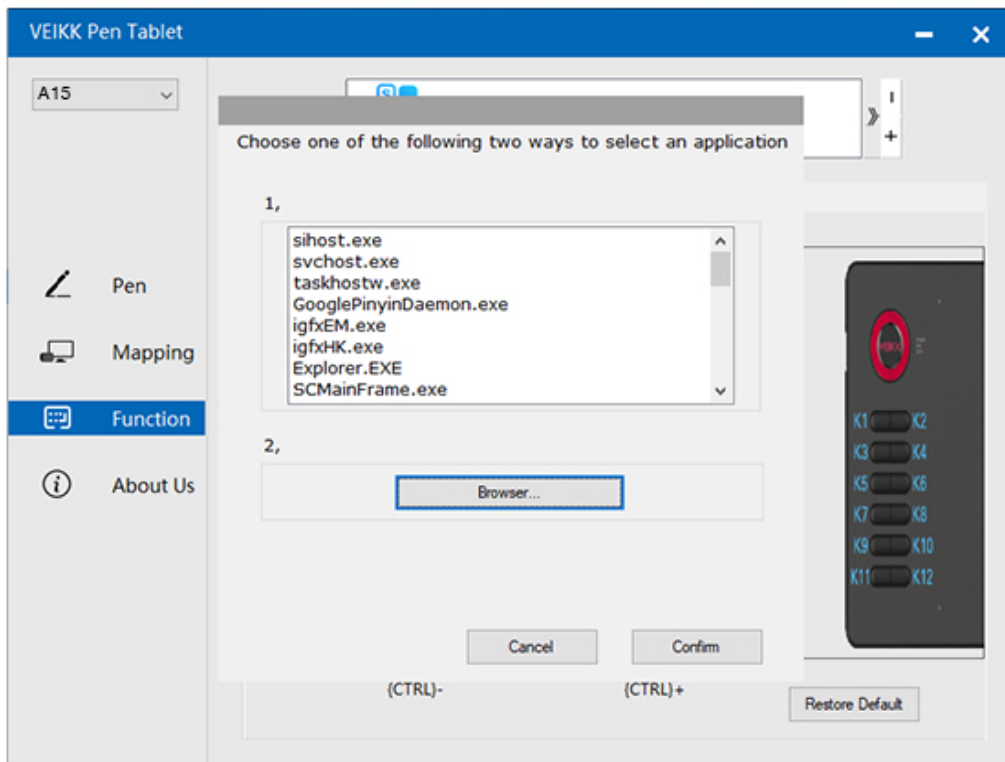
Customize the keys functions for different applications

7.3.1 Application List: You can add or remove software by “+” or “-”



“+”: Click “+” to add softwares, you have two ways to select an application.

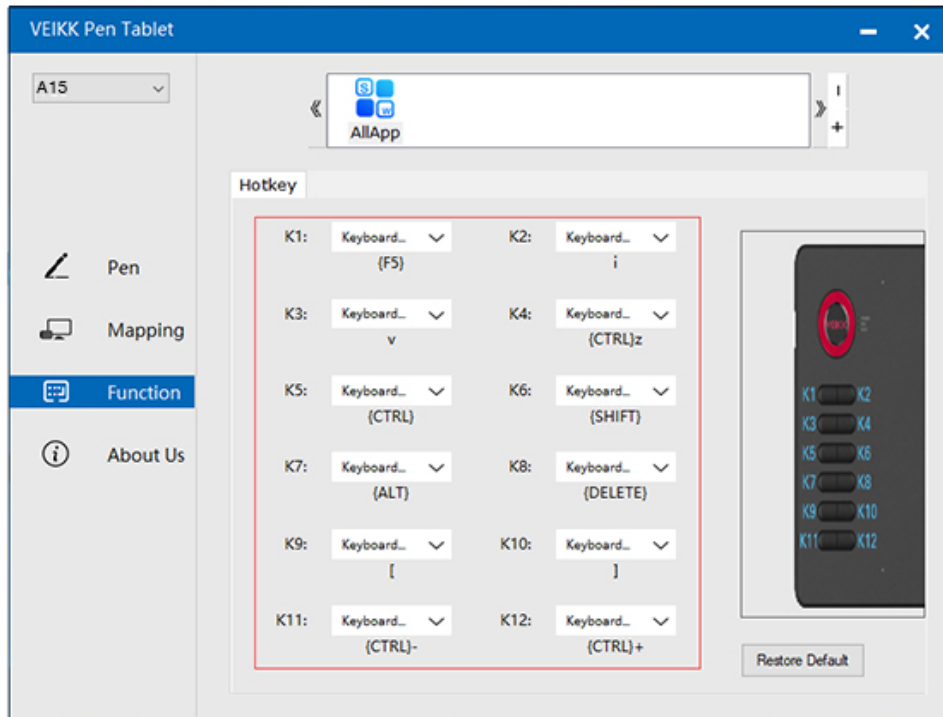
- 1、 Choose from the dropdown
- 2、 Choose from the browser



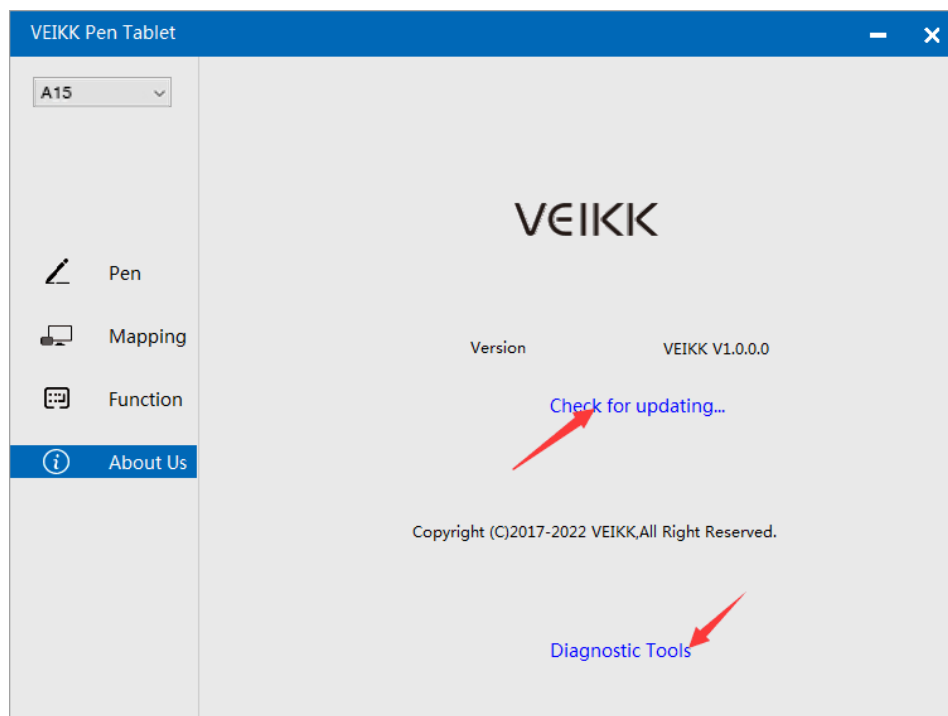
“-”: Click “-” to remove the softwares you added before.

7.3.2 Hotkey

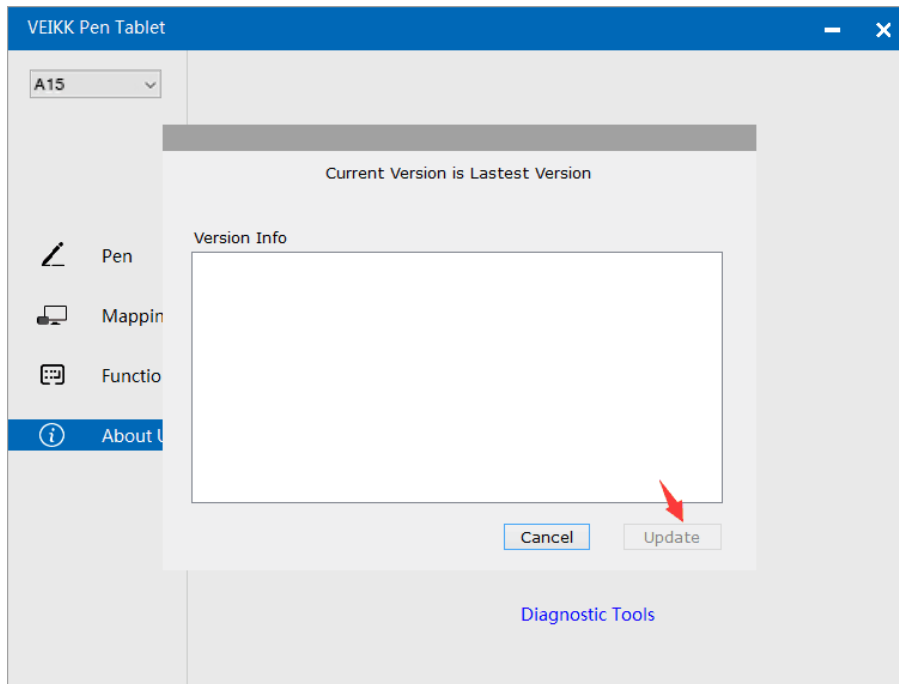
Redefine Hotkey: Click on the title of the button. A dropdown menu will appear with a list of tool options. Choose the one you want to use.



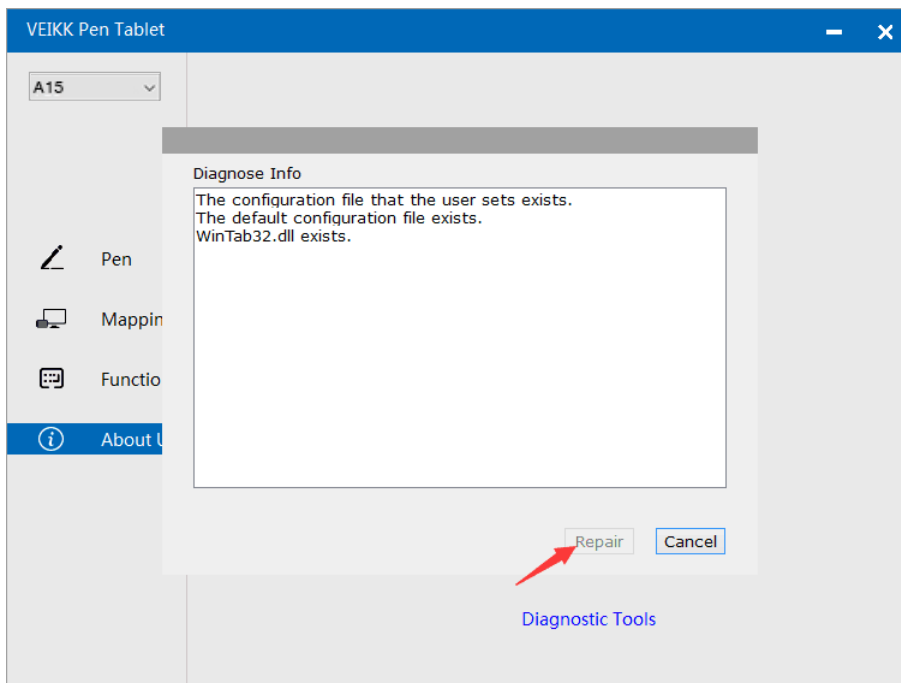
7.4 About Us



Check for updating:If you want to install the newest driver,click”Check for updating”, if there is no response,that means the driver you installed is the newest;if you find newest driver in the list,you just need to update.



Diagnostic Tools:Check for missing key files



Mac:

Note:Driver settings in Mac system are the same in Windows system. Users who use Mac system can take reference to Windows system.

VEIKK

Any question, please contact us

Beijing Veikk E-commerce Co., Ltd.

Email : service@veikk.com

Skype : veikk service

Website : www.veikk.com