



Philips
Multi-Styler

• 6-in-1

Instant creativity, constant care

Philips Multi-Styler gives you versatility to create the latest hair style for every occasion while caring for your hair.

Beautifully styled hair

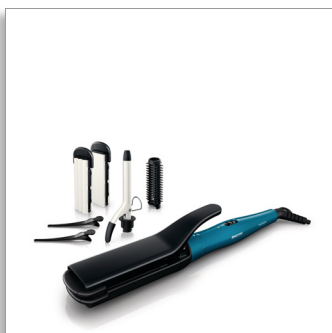
- 16mm tong and brush sleeve; flat and crimper plates; 2 clips
- 190°C styling temperature for long lasting result

Less damage

- Ceramic coating on every heat attachment

Ease of use

- Auto shut-off function after 60 min
- Pouch for easy storage
- Ready to use LED indicator



HP8698/00

PHILIPS

Highlights

6 piece hairstyler set



Philips Multi-styler contains: 16mm curling tong for ringlets; brush sleeve for 16mm tong to create additional volume; crimper with 2-in-1 convertible flat and crimper plates for straight and crimped look; two hair clips for easier styling.

Ceramic coating



Ceramic coating for better care of your hair.

190°C styling temperature



190°C styling temperature secures long lasting result while minimizing risk of hair damage.

Auto shut-off function



The automatic shut-off feature has been designed to provide peace of mind. If left on, the curler will automatically switch off after 60 min.

Ready to use indicator

LED light stops blinking when the styler is ready to use.

Pouch

Pouch for easy storage

Specifications

Accessories

- Pouch

Technical specifications

- Barrel diameter: 16 mm
- Heater type: PTC
- Heat up time: 3 min
- Cord length: 1.8 m
- Voltage: Universal

Features

- Auto shut-off: after 60 min
- Swivel cord

