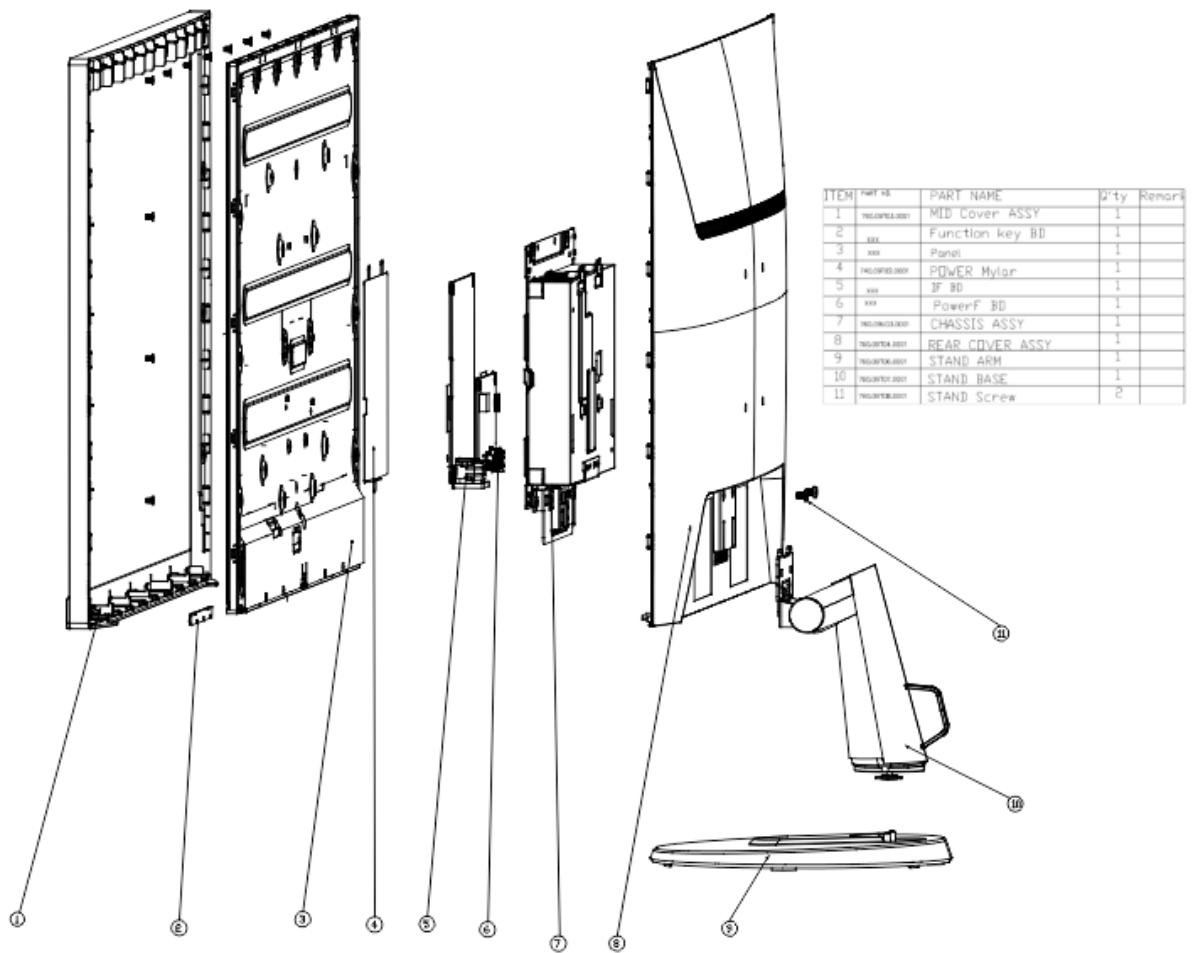


D32u-40&C32u-40&D32u-45 Simplified service manual for dismantling

Model Name: Lenovo D32u-40&C32u-40&D32u-45



Exploded Diagram



1. Precaution




Please read the precaution as follows to prevent any damages to the LCD Monitor.

Make sure all power connector is removed. Be sure that the LCD Monitor is in power off status.


<p>Prepare soft cloth and sponge as working platform to place LCD monitor horizontally.</p>	
<p>Hold LCD by the side carefully and DON'T touch or press panel directly.</p>	

2. Appropriate tools

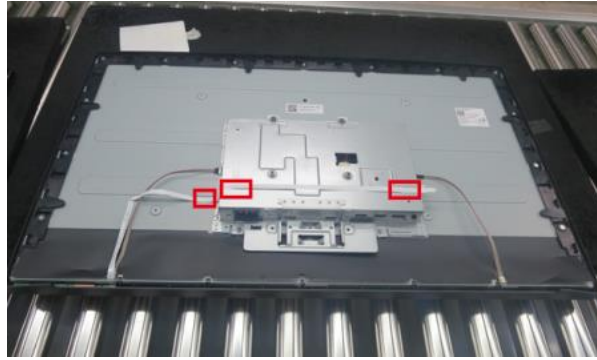
Select the Appropriate tools for disassembly and re-assembly.

Phillips screwdriver (#2)	
C/D disassembly tool	
Gloves or soft cloth	

3. Disassembly SOP

<p>Put the monitor on a flat surface (Put the EPE on under the monitor)</p>	
<p>Remove 2pcs screw to release the stand hinge Tool : Screwdriver #2</p>	
<p>Use the C/D disassembly tool to release Rear cover hook from disassemble hole on bottom</p>	
<p>Wedge your fingers between the rear cover and the middle frame on the corners of the top side of the monitor to release the rear cover Tool: Gloves</p>	

Unplug OSD key cable and tear off the tape for releasing the cable



Remove all screw for unlocking middle frame and main chassis.
Tool : Screwdriver #2



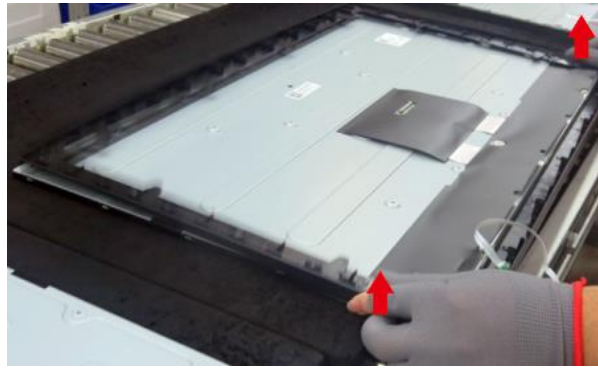
Unplug the two panel lamp cables



Disconnect LVDS cable from the panel, remove the main chassis



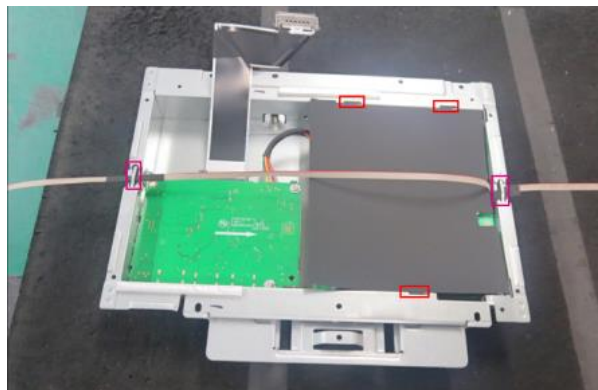
Lift up the middle frame for releasing the middle frame with panel



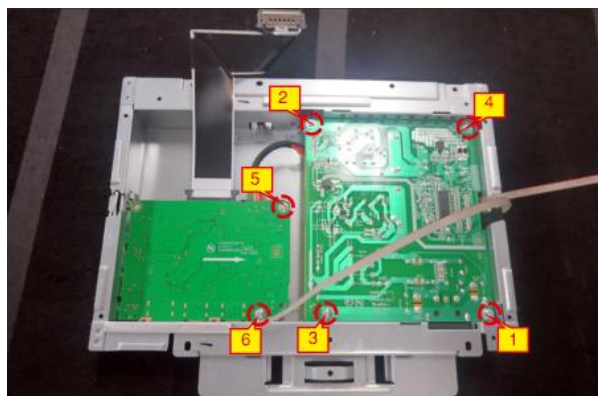
Release the keypad board from the middle frame



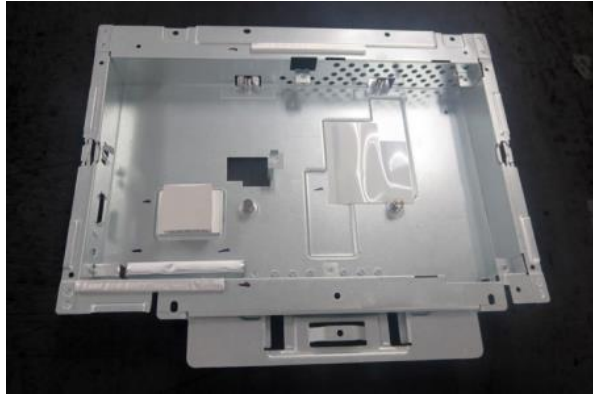
Release lamp cable from the hooks of the main chassis
Take out the mylar sheet from Main chassis



Remove 6pcs screws.
Tool : Screwdriver #2



Take out PCB and peel off all mylar.



Take out the Thermal pads from Power PCB

