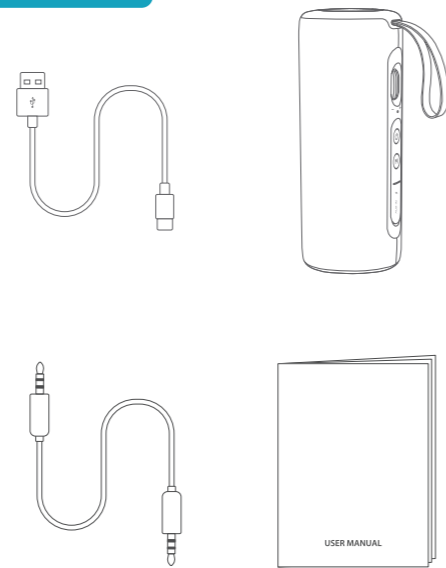


BOOMPODS®

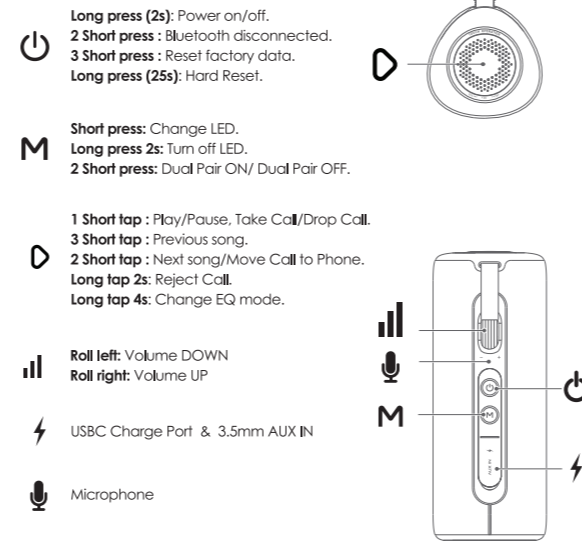
Rhythm
24w

USER MANUAL

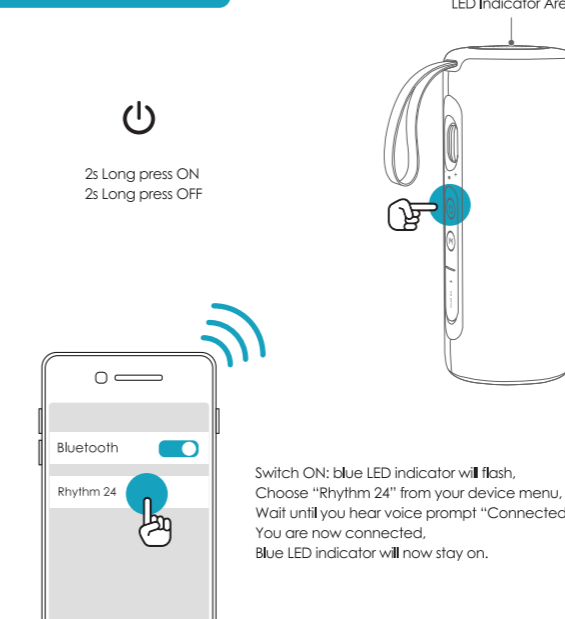
In the Box



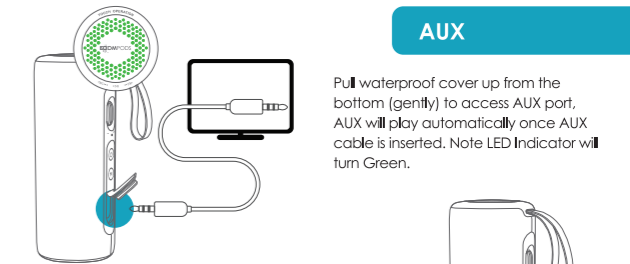
Controls



How to Connect



AUX



Lights

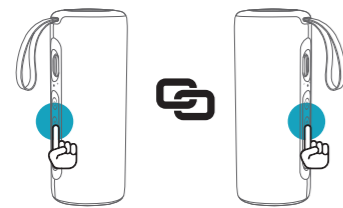
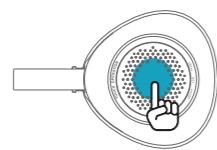
10 Different LED lights. Short press "M" once to change modes. Mode 1 is defaulted when you power on each time.

EQ

3 Equalizer settings: bass boost, vocal boost and BoomPods Studio are available. To change: Long press indicator area until you hear the setting Vocal prompt, note that BoomPods studio is defaulted when you power on.

Calling

Short tap once to Answer.
Short tap Once to hang up.
Short tap twice to move call from speaker to phone to keep call private.
Tap Hold for 2s to hang up.



Pair 2

If you have already paired the Speaker to your phone or other device (in range) clear them from those devices.

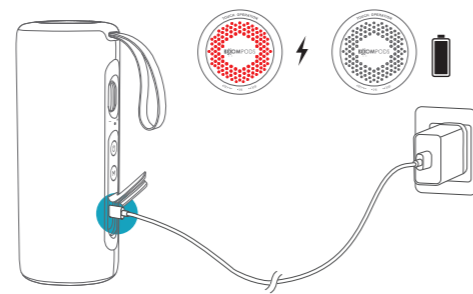
Switch on both speakers.
Short press "M" button twice, on both speakers, then wait until you hear voice prompt "connected".

The master speaker's blue indicator will keep flashing, the sub-master speaker's blue indicator will stay on.

Now pair to your phone, follow the instruction on previous page.

Charging

Gently remove waterproof cover only until USB-C charging port is exposed. (Please make sure after charging this is securely fixed back in place to avoid water and debris, this could void the warranty)
Use supplied USB-C Charging Cable.
Use an output source 5V/2A (or above).
Charge when you hear "Battery Low" prompt or the LED indicator flash RED. Red LED will be on while charging and switch off when fully charged.



Speaker will power off automatically to save battery when nothing is connected after 10 minutes.

Specifications

Product Name	Rhythm 24
Bluetooth Version	5.0
Battery	4000mAh
Playing Time	8-10 Hours (50% Volume)
Talking Time	7-8 Hours
Charging Time	2-3 Hours
Charging Current	5V = 1.5A
Speaker Unit	12W*2/4Ω, 53mm diameter
Product Size	81x81x187.3mm
Product Weight	602g
Waterproof Rating	IPX5
frequency range	70Hz-18kHz

Look after me

1. Please read this manual carefully before use and keep it safe.
2. First time use, please fully charge.
3. Use certified adapter that has passed national safety certification.
4. Charge at least once a month to maintain performance.
5. Do not use in extremely hot or cold environments, temperature beyonds 5 C-35 C. If used beyond the above range, the product may stop automatically to protect the internal circuit.
6. When charging in high temperature environments, the product may automatically stop charging to protect the battery. At this time, the charging indicator usually flashes quickly to indicate that the charging environmental temperature or the product internal temperature is too high.
7. Storage environment temperature: -5~35 C RH<70% (recommended 20 C±5).

Important safety instructions:

1. Do not disassemble or repair this speaker personally, otherwise it may cause product damage or personal injury.
2. Do not use it in dusty, humid, dry, and high-temperature environments.
3. Do not place this product near a heat source, or a place with direct sunlight, lots of dust, or mechanical vibration.
5. Do not exceed the IPX5 waterproof rating parameters.
7. When the product is fully charged, remove from charging.
8. The maximum ambient temperature should not exceed 40°C.

*This speaker supports mobile phones/ tablets/ PCs etc. Here this User Manual is illustrated base on mobile phones.

BOOMPODS®

?
www.boompods.com



BOOMPODS is a trademark of BOOMPODS LTD. BOOMPODS ©2022 All Rights.
BOOMPODS (UK) Norwich NR11 7AQ, UK.
BOOMPODS (EU), Gronica, 05-806, PL.
info@boompods.com Registered No: 08147066. Made in China.