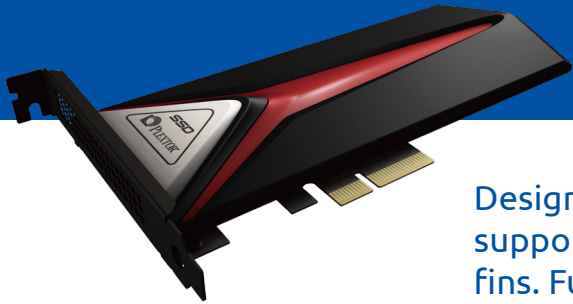


GAME ON PLAY HARD PLAY NOW



M8Pe Series HHL Add-in Card NVMe SSD PCIe Gen 3 x4

Designed for professional gamers! M8Pe series is the first to support advanced NVMe, featuring high-performance cooling fins. Fully upgraded SSD with ultra-performance, immersing gamers with its incredibly fast speeds.

Product Feature

- Advanced technologies – Plextor's first PCIe Gen 3 x4 Ultra-High-Speed SSD with NVMe 1.2 support
- High-speed performance – Sequential read/write speeds up to 2500/1400 MB/s with random read/write speeds faster than 280,000/240,000 IOPS
- Guaranteed data accuracy and stability – latest generation of LDPC error-correction technology
- eSports level quality design – High performance cooling fins with gamers in mind
- Best for custom-building – available with PCIe and M.2 2280 interfaces
- Multiple capacity options – 128GB, 256GB, 512 GB, and 1TB
- No worries – 5-year long-term warranty

Extreme eSports level performances

A complete upgrade for your professional e-sports experience, the M8Pe series supports the high-speed interface of the new generation PCIe Gen3 x4. Powered by the latest NVMe protocol, the M8Pe boasts of extreme performances up to 2500/1400 MB/s sequential read/write speeds, and up to 280000/240000 IOPS random read/write performance. Even with games that require heavy read/write operations and intense graphic processing, it delivers the smoothest gaming experience with its powerful infrastructure optimized for eSports.

Staying calm and cool during intense video games is highly important. The M8Pe's professional cooling fins are impressively effective with its high-efficiency internal airflow design, dispelling the worry of high temperatures that can compromise system performance, therefore extending the service life of the SSD. Additionally, M8Pe comes with PCIe interface and an M.2 2280 form factor, making it a convenient choice for gamers when upgrading their custom-built gaming rigs.

The must-have premium component for gamers

The M8Pe series packs the all-powerful Marvell controller that is highly rated by gamers, Toshiba's high-quality 15nm MLC NAND, the latest LDPC error-correction and a suite of firmware technologies. Gamers can count on high-speed and stability, guaranteed accurate read/write operations and improved SSD service life.

Zero Error Quality

PLEXTOR SSDs are notoriously known for its strict quality standards. All products are required to pass all rigorous tests by the most advanced SSD testing system in the world, allowing no single error or failure (Zero Error). Through real-world read/write conditions simulation, the M8Pe series is guaranteed to have an astounding MTBF (Mean-Time-Between-Failure) of 2.4 million hours. All these enable the M8Pe to provide its users a sense of trust in its reliable performance over the course of time, and a secured environment for games and valuable data.

Specification				
Model	PX-128M8PeY	PX-256M8PeY	PX-512M8PeY	PX-1TM8PeY
Capacity	128 GB	256 GB	512 GB	1 TB
Cache	512MB LPDDR3	512MB LPDDR3	512MB LPDDR3	1024MB LPDDR3
Controller	Marvell 88SS1093			
NAND Flash	TOSHIBA 15nm Toggle MLC			
Performance (Under Windows NTFS)				
Sequential Read Speed (MB/s)*	Up to 1,600	Up to 2,000	Up to 2,300	Up to 2,500
Sequential Write Speed (MB/s)*	Up to 500	Up to 900	Up to 1,300	Up to 1,400
Random Read Speed (IOPS)*	Up to 120,000	Up to 210,000	Up to 260,000	Up to 280,000
Random Write Speed (IOPS)*	Up to 130,000	Up to 230,000	Up to 250,000	Up to 240,000
Environment and Reliability				
Power Requirement	DC 12V 2.0A (Max.) at PCIe Slot			
Temperature	0°C ~ 70°C / 32°F ~ 158°F (Operating)			
Shock	1500G (Max.) , at 1 msec half-sine			
Vibration	7 ~ 800Hz, 1.63Grms (Operating)			
MTBF	>2,400,000 Hours			
Warranty	5 years			
Compatibility				
Operating System Supported	Microsoft Windows 8.1, 10/ Linux OS			
Agency Approval	UL, TUV, FCC, CE, BSMI, VCCI, RCM, KCC, EAC, ROHS, WHQL			
Command Set Support	TRIM, S.M.A.R.T, IO queue, NVMe command			
Interface	M.2 PCIe Gen 3 x4 with NVMe Express			
Firmware Upgrade	Supported			
Form Factor and Connectors				
Form Factor	Standardized PCI Express Card with Half-Height/Half-Length			
Power Connector	DC 12V PCI Express Slot			
Data Connector	PCI Express Slot			
Dimension and Weight				
Dimension (L/W/H)	182 x 121.04 x 22.39 mm / 7.17 x 4.77 x 0.88 inch			
Weight	230g / 8.11oz (Max.)			
Package Content				
Drive	128GB / 256GB / 512GB / 1TB SSD			
Accessory	Half-Height Bracket			
Documents	Quick Installation Guide			

Specifications subject to change without notice.

Actual performance may vary based on hardware, software, and overall system configuration.

* Performance measured using CrystalDiskMark ver.3, IOMETER with queue depth set to 32.

Test Platform: Motherboard: ASUS Z97-Delux (Windows 8.1 x64)



For more information, please visit
www.PLEXTOR.com

Lite-On Technology Corporation
 12F, 392, Ruey Kuang Road
 Neihu Dist., Taipei 114
 Taiwan, R.O.C

© 2016 Plextor.
 Plextor branded products are developed and sold by Lite-On Technology Corporation.