



SUGO Series

SUGO 16

Mini-ITX cube chassis with all steel construction

- Supports standard length graphics / expansion cards of up to 275mm
- Compatible with Mini-DTX / Mini-ITX motherboard & ATX PSU
- Supports 120mm All-In-One liquid cooling radiator
- CPU cooler opening on motherboard back plate for convenient assembly and upgrade
- Front I/O port includes 2 x USB 3.0, combo audio x 1



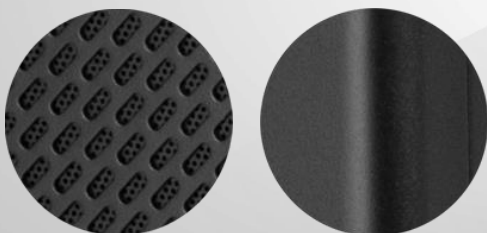
Specifications

Model No.	SST-SG16B (Black) SST-SG16W (White)
Material	Steel
Motherboard	Mini-DTX, Mini-ITX
Drive bay	Internal 2.5"x1, 2.5" x 1 or 3.5" x 1 (Occupies front fan mount)
Cooling system	Front 80mm x 1 / 92mm x 1 / 120mm x 1 (120mm only allows SFX, SFX-L power supply installation)
	Rear 120mm x 1
Radiator support	Front 120mm (Can only install SFX, SFX-L power supply)
	Rear 120mm
Expansion slot	2
Front I/O port	USB 3.0 x 2, Combo audio x 1
Power supply	Standard PS2 (ATX)
Graphics card limit	Length: 275mm Width: 147mm
CPU cooler limit	Air cooler: 85mm ~ 172mm*
PSU limit	150mm ~ 220mm
Net Weight	2.66 kg
Dimension	200mm (W) x 232mm (H) x 280mm (D), 13 Liters
	7.87" (W) x 9.13" (H) x 11.02" (D), 13 Liters
Extra	Support Kensington lock

* When installing a high tower air cooler, an SFX PSU must be installed as there will be interference when using an ATX PSU. Please refer to manual for more details.

Subtle yet sturdy design

Constructed using high-grade steel material, SUGO 16 features extensive perforated panels catering to main heat source components





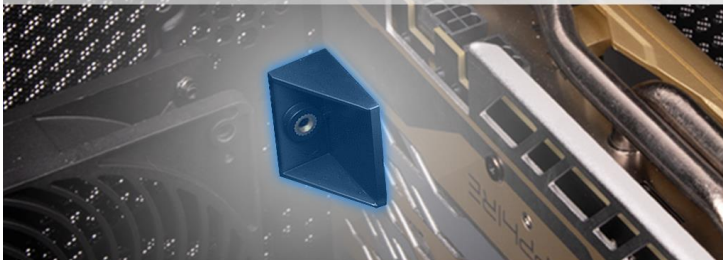
SILVERSTONE



Tiny overall footprint with ample graphics / expansion card clearance

Thoughtful design down to the details

SUGO 16 features an adjustable graphics card holder and motherboard tray cutout for convenient M.2 SSD & CPU cooling upgrades and maintenance



Superior dust prevention

3 complete coverage dust filters on the top cover, front and side panels to assist in preventing performance degradation caused by dust accumulation over time

