



Philips Brilliance  
LCD monitor with USB-C  
Dock

**P Line**

32 (31.5"/80 cm diag.)  
3840 x 2160 (4K UHD)

**Brilliance**

**329P9H**



## Ultra clarity, outstanding colour, for when it matters

When every detail matters, Philips Brilliance 32" 4K display delivers crisp visuals with accurate colour. Convenient features like USB-C docking and a secure pop-up webcam with Windows Hello increase your productivity.

### **Brilliant performance**

- UltraClear 4K UHD (3840 x 2160) resolution for precision
- IPS technology for full colours and wide viewing angles

### **Optimal Connectivity**

- Built-in USB-C docking station
- Built-in RJ-45 Ethernet gives data security

### **Designed for the way you work**

- MultiView enables simultaneous dual connect and view
- Securely sign in with pop-up webcam with Windows Hello™
- SmartErgoBase enables user-friendly ergonomic adjustments
- LowBlue Mode for easy-on-the-eyes productivity

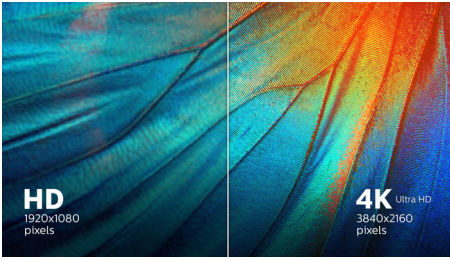
### **Sustainable Eco-design**

- PowerSensor saves up to 70% energy costs
- LightSensor for the perfect brightness with minimal power

**PHILIPS**

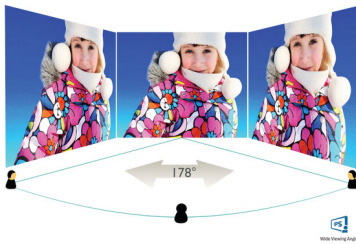
# Highlights

## UltraClear 4K UHD Resolution



These Philips displays utilise high-performance panels to deliver UltraClear, 4K UHD (3840 x 2160) resolution images. Whether you are a demanding professional requiring extremely detailed images for CAD solutions, a user of 3D graphics applications or a financial wizard working on huge spreadsheets, Philips displays will make your images and graphics come alive.

## IPS technology



IPS displays use advanced technology that gives you extra-wide viewing angles of 178/178 degrees, making it possible to view the display from almost any angle — even in 90-degree Pivot mode! Unlike standard TN panels, IPS displays gives you remarkably crisp images with vivid colours, making it ideal not only for Photos, films and web browsing, but also for professional applications that demand colour accuracy and consistent brightness at all times.

## Built-in USB-C docking station



This Philips display features a built-in USB type-C docking station with power delivery. Its slim,

reversible USB-C connector allows for easy, one-cable docking. Keep it simple by connecting all your peripherals, like your keyboard, mouse and your RJ-45 Ethernet cable to the monitor's docking station. Simply connect your notebook to this monitor with a single USB-C cable to watch high-resolution video and transfer super-speed data while powering up and recharging your notebook at the same time.

## MultiView technology

With the ultra-high resolution Philips MultiView display, you can now experience a world of connectivity. MultiView enables active dual connect and view so that you can work with multiple devices like a PC and notebook simultaneously, for complex multitasking.

## Windows Hello™ pop-up webcam



Phillips' innovative and secure webcam pops up when you need it and securely tucks back into the monitor when you are not using it. The webcam is also equipped with advanced sensors for Windows Hello™ facial recognition, which conveniently logs you into your Windows devices in less than 2 seconds, 3 times faster than a password.

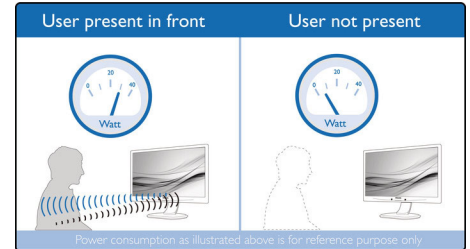
## SmartErgoBase



The SmartErgoBase is a monitor base that delivers ergonomic display comfort and provides cable management. The user-friendly

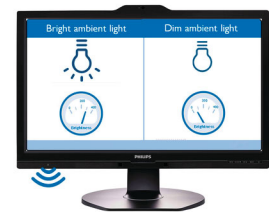
height, swivel, tilt and rotation angle adjustments of the base allow the monitor to be positioned for maximum comfort to help ease the physical strains of a long workday. In addition, cable management reduces cable clutter and keeps the workspace neat and professional.

## PowerSensor



PowerSensor is a built-in 'people sensor' that transmits and receives harmless infrared signals to determine if the user is present and automatically reduces monitor brightness when the user steps away from the desk, cutting energy costs by up to 70 percent and prolonging monitor life.

## LightSensor



LightSensor uses a smart sensor to adjust the picture brightness depending on the light conditions in the room for the perfect picture with minimal power usage.



Ultra HD

USB-C Docking

4-sided Frameless

MultiView

Windows Hello

SmartErgo Base

PowerSensor

LightSensor

LowBlue Mode

# Specifications

## Picture/Display

- LCD panel type: IPS technology
- Backlight type: W-LED system
- Panel Size: 31.5 inch/80 cm
- Display Screen Coating: Anti-Glare, 3H, Haze 25%
- Effective viewing area: 697.3 (H) x 392.2 (V)
- Aspect ratio: 16:9
- Optimum resolution: 3840 x 2160 @ 60 Hz
- Pixel Density: 140 PPI
- Response time (typical): 5 ms (Grey to Grey)\*
- Brightness: 350 cd/m<sup>2</sup>
- Contrast ratio (typical): 1300:1
- SmartContrast: 50,000,000:1
- Pixel pitch: 0.182 x 0.182 mm
- Viewing angle: 178° (H)/178° (V), @ C/R > 10
- Flicker-free
- Picture enhancement: SmartImage
- Display colours: Colour support 1.07 billion colours
- Colour gamut (typical): NTSC 90%\*, sRGB 108%\*, Adobe RGB 87%\*
- Scanning Frequency: 30 - 160 kHz (H) / 23 - 80 Hz (V)
- SmartUniformity: 97~102 %
- Delta E: < 2
- sRGB
- LowBlue Mode
- EasyRead

## Connectivity

- Signal Input: DisplayPort 1.2 x 1, DisplayPort out (Clone mode) x 1, HDMI 2.0 x 2, USB-C 3.1 Gen 2 x 1 (upstream, power delivery up to 65 W)
- HDCP: HDCP 2.2 (HDMI/DP/USB-C)
- USB: USB 3.1 x 4 (downstream with x 1 fast charge B.C 1.2)
- Audio (In/Out): Headphone out
- RJ45: Ethernet LAN up to 1G\*
- Sync Input: Separate Sync, Sync on Green

## USB

- USB-C: Reversible plug connector
- Super speed: Data and Video transfer
- DP: Built-in Display Port Alt mode
- Power delivery: USB PD version 2.0
- USB-C max. power delivery: Up to 65 W (5 V/3 A; 9 V/3 A; 10 V/3 A; 12 V/3 A; 15 V/3 A; 20 V/3.25 A)

## Convenience

- Built-in Speakers: 3 W x 2
- Built-in webcam: 2.0 megapixel FHD camera with microphone and LED indicator (for Windows 10 Hello)

- MultiView: PIP/PBP mode, 2 x devices
- User convenience: SmartImage, User 1, User 2, Menu, Power On/Off
- Control software: SmartControl
- OSD Languages: Brazil Portuguese, Czech, Dutch, English, Finnish, French, German, Greek, Hungarian, Italian, Japanese, Korean, Polish, Portuguese, Russian, Simplified Chinese, Spanish, Swedish, Traditional Chinese, Turkish, Ukrainian
- Other convenience: Kensington lock, VESA mount (100 x 100 mm)
- Plug and Play Compatibility: DDC/CI, Mac OS X, sRGB, Windows 10 / 8.1 / 8 / 7

## Stand

- Height adjustment: 180 mm
- Pivot: -/+ 90 degree
- Swivel: -/+ 175 degree
- Tilt: -5/25 degree

## Power

- ECO mode: 30.8 W (typ.)
- On mode: 33.95 W (typ.) (EnergyStar test method)
- Standby mode: < 0.5 W (typ.)
- Off mode: Zero watts with Zero switch
- Energy Label Class: B
- Power LED indicator: Operation - White, Standby mode - White (flashing)
- Power supply: Built-in, 100~240 VAC, 50~60 Hz

## Dimensions

- Product with stand (max height): 715 x 636 x 246 mm
- Product without stand (mm): 715 x 412 x 51 mm
- Packaging in mm (W x H x D): 793 x 673 x 186 mm

## Weight

- Product with stand (kg): 10.63 kg
- Product without stand (kg): 7.33 kg
- Product with packaging (kg): 14.43 kg

## Operating conditions

- Temperature range (operation): 0°C to 40°C °C
- Temperature range (storage): -20°C to 60°C °C
- Relative humidity: 20%-80 %
- Altitude: Operation: +12,000 ft (3658 m), Non-operation: +40,000 ft (12,192 m)
- MTBF (demonstrated): 70,000 hrs (excluded backlight)

## Sustainability

- Environmental and energy: PowerSensor, LightSensor, EnergyStar 8.0, EPEAT\*, TCO

- Certified, WEEE, RoHS
- Recyclable packaging material: 100 %
- Post-consumer recycled plastic: 85%
- Specific Substances: PVC/BFR free housing, Mercury free, Lead free

## Compliance and standards

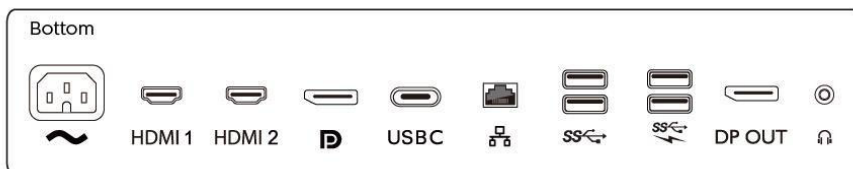
- Regulatory Approvals: CE Mark, FCC Class B, China RoHS, UKRAINIAN, ICES-003, CU-EAC, cETLus, TUV Ergo, TUV/GS, SEMKO, EPA

## Cabinet

- Front bezel: Black
- Rear cover: Black
- Foot: Black
- Finish: Texture

## What's in the box?

- Monitor with stand
- Cables: HDMI cable, DP cable, USB-C to C cable, USB-C to A cable, Power cable
- User Documentation



Issue date 2020-09-24

Version: 7.0.1

12 NC: 8670 001 57964  
EAN: 87 12581 75682 6

© 2020 Koninklijke Philips N.V.  
All Rights reserved.

Specifications are subject to change without notice.  
Trademarks are the property of Koninklijke Philips N.V.  
or their respective owners.

[www.philips.com](http://www.philips.com)

\* "IPS" word mark / trademark and related patents on technologies belong to their respective owners.  
\* Response time value equal to SmartResponse  
\* NTSC Area based on CIE 1976  
\* sRGB Area based on CIE 1931  
\* Adobe RGB Coverage based on CIE 1976  
\* Activities such as screen sharing and online streaming over the Internet can impact your network performance. Your hardware and network bandwidth will determine the overall audio and video quality.  
\* For USB-C power and charging function, your Notebook/device must support USB-C standard Power Delivery specifications. Please check with your Notebook user manual or manufacturer for more details.  
\* For Video transmission via USB-C, your Notebook/device must support USB-C DP Alt mode  
\* If your Ethernet connection seems slow, please enter the OSD menu and select USB 3.0 or a higher version that can support the LAN speed up to 1G.  
\* Cannot support USB-C vs HDMI for PIP/PBP at the same time  
\* EPEAT rating is valid only where Philips registers the product. Please visit <https://www.epeat.net/> for registration status in your country.  
\* The monitor may look different from feature images.