

COMPELLING PERFORMANCE

MID-TOWER CHASSIS



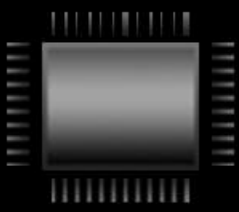
4mm
THICK TEMPERED GLASS



Tool-Less Drive Bays
FLEXIBLE HARD DRIVE
MOUNTING OPTIONS



White LED FANS X3 (INCLUDED)



Motherboard Support
ATX MICRO-ATX ITX



Room For Graphics Cards Up To 390mm



Support For Liquid Cooling Radiators
(240 MM TOP, 360 MM FRONT, 120 MM REAR)



2.5" SSD Drive Bays x 4



3.5" HDD Drive Bays x 2



20 mm Cable Management Space
Behind The Motherboard

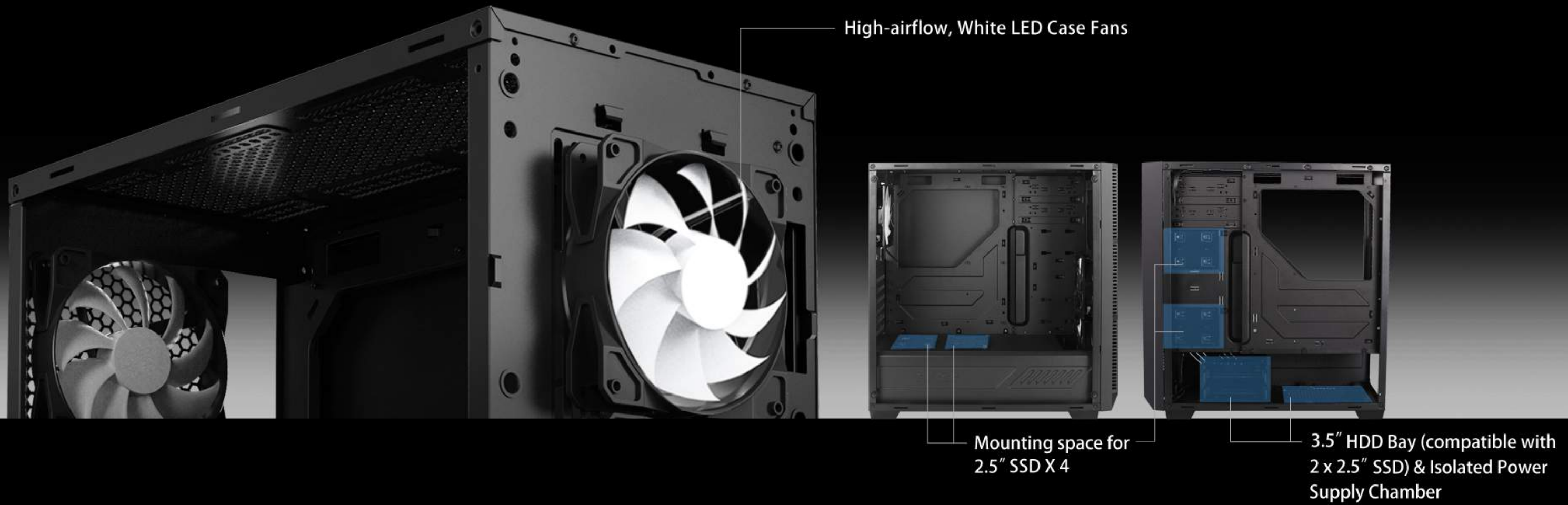
DESIGN CONCEPT

With clean lines and an interior designed around performance, the Antec P8 is a distinctly modern addition to the acclaimed Performance Series. Beyond the minimalist yet functional design, the layout of the P8 makes it simple to build, maintain, and cool and efficient and powerful system. And for high-end configurations, the P8 handles graphics cards up to 390mm long and boasts water cooling options to bring out your system's best performance.

Antec

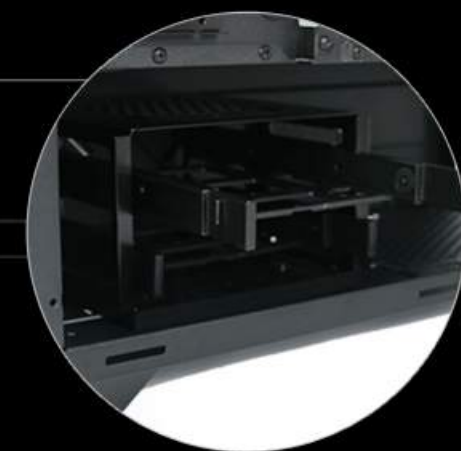
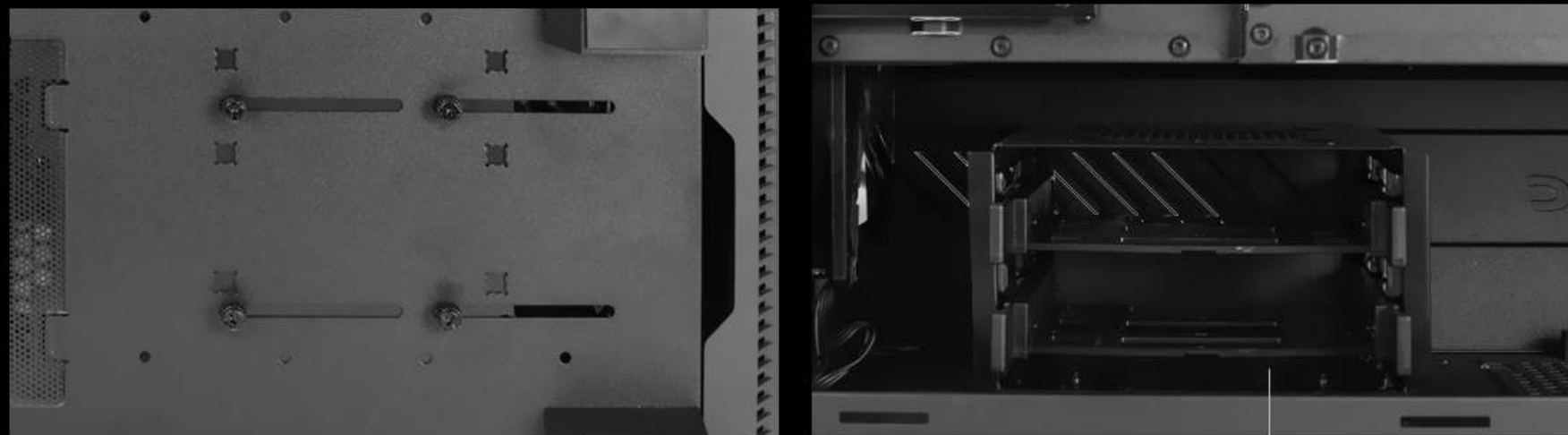
• ILLUMINATED FRONT LOGO

Choose your own cooling system configuration with 120/140 mm fan mounts for flexibility and ease of use.
Isolated PSU compartment provides easy cable routing and extra noise-dampening.



Removable 3.5" HDD Bay

Flexible hard drive mounting options



Tool-less hard drive bays
and drive cages

Spacious Interior

Liquid Cooling Radiator Support In Rear: 120 mm

Liquid Cooling Radiator Support On Top: 240 mm

Max. CPU cooler height: 165mm

Max. Graphics Card Length: Up To 390mm

Tempered Glass Side Panel

Liquid Cooling Radiator Support At Front: 360 mm

Steel Front Panel



POWER



RESET



USB 3.0 X 2



AUDIO/MIC



Includes High Static Pressure White LED Fans x 3
Front x 2 , Rear x 1



7 PCI-E Slots



Magnetic Top Air Filter



Additional Tempered Glass Side Panel Available As An Accessory (Sold Separately)

CREATE THE PERFECT BUILD FOR EVERY ENVIRONMENT

PLAY



WORK



Modding work crafted by FUXK



BELIEVE IT

P8

COMPELLING PERFORMANCE

CASE SPECIFICATION

Dimensions	443 x 210 x 470 mm (HWD)
Form Factor	Mid Tower
Materials	Steel/ABS
Mainboard Support	ATX, Micro-ATX, ITX
Front Access & Controls	2 x USB 3.0, POWER, RESET, MIC/AUDIO
Side Panel	Tempered Glass (Single Side) *Additional tempered glass side panel available as an accessory (sold separately)

EXPANSION & DRIVE BAYS

Expansion Slots	7
5.25"	0
2.5"/3.5" (Convertible)	2
2.5"	4

COOLING SUPPORT

Front	3x120mm or 2x140mm
Top	3x120mm or 2x140mm
Rear	1x120mm
Included Fan(s)	3 (2 x White LED 120mm fans @ front & 1 x White LED 120mm fan @ rear)

RADIATOR SUPPORT

Front	≤ 360mm
Top	≤ 240mm
Rear	≤ 120mm

CLEARANCE

MB Tray Clearance	≤ 20mm
Max GPU Length	≤ 390mm
Max CPU Height	≤ 165mm
Max PSU Length	≤ 240mm

OTHERS

Dust Filters	Front / Top / Bottom
--------------	----------------------