

Portable Hard Drive Enclosure
with USB Type-C Connector
for M.2 NVME / SSD (Model no.CEB-M2C)

Preface

Thank you for purchasing our product (CEB-M2C). To use this product properly, please read this user manual completely before using this product.

Attentions

1. The HDD or SSD needs to be partitioned or formatted before it can be used if it is newly purchased.
2. Please be patient to wait for computer recognizing the hardware when first time to install the hard disk (The actual time differs from PC to PC).
3. Do not disassemble, repair, and modify this product.
4. If this product is not in use for a long time, please remove it and keep in safe place.
5. Please use original accessories to avoid damaging the product.
6. If you have encountered any questions about using this product, please contact the dealer or our customer service (info@chieftec.eu).

Package Contents

- CEB-M2C Enclosure 1PCS
- USB3.1 Cable 1PCS
- Screwdriver 1PCS
- User Manual 1PCS
- Parts Package 1PCS

Parts Package



Manufacturer: Arena Electronic GmbH | Koppersstr. 18, 40549 Düsseldorf, Germany
Model No.: CEB-M2C Input: 5V/ USB
www.chieftec.eu



Product Introduction

CEB-M2C is a USB3.1 Gen2 Type-C M.2 SSD enclosure, applicable to M.2 SSD hard drive, and supports Type-C to USB3.1 Gen2 ultra-fast data transfer rates (up to 10Gbps). The product supports the PCIe interface and is made of strong and durable aluminum alloy shell with excellent heat dissipation effect. It is compatible with various dimensions of M.2 SSD Module (2230/2242/2260/2280). In addition, the hard disk is easy to assemble and disassemble for easy installation and maintenance.

Features

- Support Type-C to USB3.1 Gen2 ultra-fast data transfer rates up to 10Gbit/s with UASP support.
- Downwards compatible with USB3.1 Gen 1 / USB2.0.
- Aluminum alloy shell features with excellent heat dissipation effect, strong and durable structure.
- The SSD is designed for easy installation and maintenance.
- Compatible with 2230, 2242, 2260, 2280 dimension of M.2 SSD Module.
- Build-in Blue LED indicator: Power on with constant light / SSD Access with blinking light.
- Support Plug & Play and Hot-Swapping. USB Type-C interface with reversible connection design supports non-directional plug-in connection.

Panel Explanation

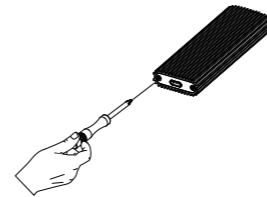


Specifications

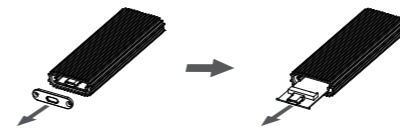
M.2 Size	2230/2242/2260/2280 SSD
Support M.2 Connector	Support M & B+M Key PCIe NVMe SSD* * Doesn't support PCIe AHCI SSD/M.2 SATA SSD
Material	Aluminum / Plastic
Interface	USB3.1 Gen 2
Transfer Rate	Up to 10 Gbit/s
LED	Power on with constant light / SSD Access with blinking light
System	Windows 10, 8, 7, Mac OS X 10.6 or later, Linux 2.6.14 or later

Installation Guide

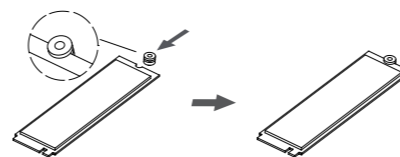
1. Take out the product and related accessories from the packing.
2. Use the attached screwdriver to remove two screws from the enclosure.



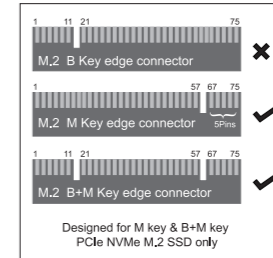
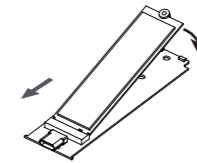
3. Remove the panel and pull out the product PCBA tray module.



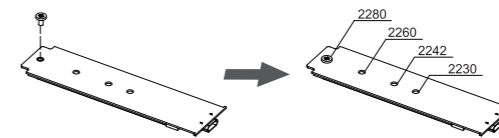
4. Secure the screw nut to suitable mounting hole depending on the length of M.2 SSD used.



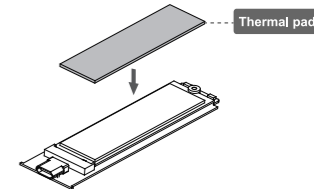
5. Mount the SSD to the M.2 connector port. (Note: Push in the direction of the notch position and push down the SSD tail so that the SSD is parallel to the PCBA plane, and the spiral column steps need to be inserted into the corresponding holes on the PCBA.)



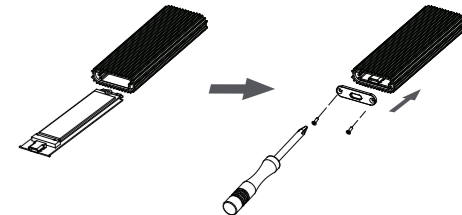
6. Use the screw to lock from the bottom of the PCBA, so that the SSD is wolly secured on the PCBA (the corresponding hole position should be corresponding to the SSD screw position of different specifications, as shown in the figure below).



7. Attach the thermal pad to the front side of the SSD, as shown in the figure below.



8. Put the PCBA module of the SSD group into the aluminum body as shown in the figure below, and use two screws to fix the panel, PCBA, and aluminum body into one body, as shown in the following figure.



9. Insert Type-C cable into the product of Type-C port, and insert the other end of the cable into the computer port, then the product can be used.

