



## MAKE OF IT WHAT YOU WILL



The Cooler Master Universal Graphics Card Holder Kit Version 2 has been upgraded to include a PCIe 4.0 riser cable, allowing fully compatibility across hardware components. Featuring an exclusive adjustable bracket, this accessory can be adjusted back and forth to accommodate all standard ATX chassis and various GPU lengths. Installation is painless: Connect the riser cable to the motherboard, install the GPU holder to the chassis, then install the GPU to the holder itself and you're set.

## SPECIFICATIONS & PACKING INFORMATION

Product Name		MASTERACCESSORY Vertical Graphics Card Holder Kit Ver. 2 (PCI-E 4.0 x16)
Product Number		MCA-U000R-KFKV02
Available Color		Black/Purple
Dimensions (L x W x H)	GFX Holder kit	184 x 142 x 121mm / 7.25 x 5.59 x 4.77 inch (closed) 239 x 142 x 121mm / 9.41 x 5.59 x 4.77 inch (fully open)
	Riser cable	165mm (6.49in)
Supported Graphics Cards		Any length, up to 2.5 slots wide
Riser Cable Model		Riser Cable PCI-E 4.0 x16
Compatibility		PCI-E 4.0 and older
CE Certifications		BKC210933AC
PCB UL Number		E189572
Wire UL Number		E252840
Component Materials		PCBA, Tinned Copper Wire 30 AWG
Insulation Materials		PE, TPE
Other Materials		ABS, PP, SGCC Steel, Nickel, Gold, Brass
Required PCI slots		7 PCI slots are required for mounting
Net Weight		? kg
Gross Weight		? kg
Warranty		1 year

## FEATURES

### Cooler Master Riser Cable PCIe 4.0 Included -

The high quality Cooler Master PCIe 4.0 Riser Cable allows data transmission at greater efficiency and higher speeds, compatible with a wide range of hardware components.

### Showcase Your Graphics Card -

The vertical graphics card holder Kit allows vertical installation of a GPU on any chassis to better show off the visual design of the GPU and its cooler.

### Compatible With All Standard ATX Chassis -

The newly revised vertical graphics card holder kit fits all standard ATX chassis with at least 7 available PCI slots.

### Modular, Instantly Adjustable Design -

The position of the GPU can be moved back and forth to allow cables to pass through chassis with either closed or open PCI slots.

### Durable, High Quality Materials -

Thick SGCC steel prevents the largest and heaviest GPUs from bending the GPU holder.

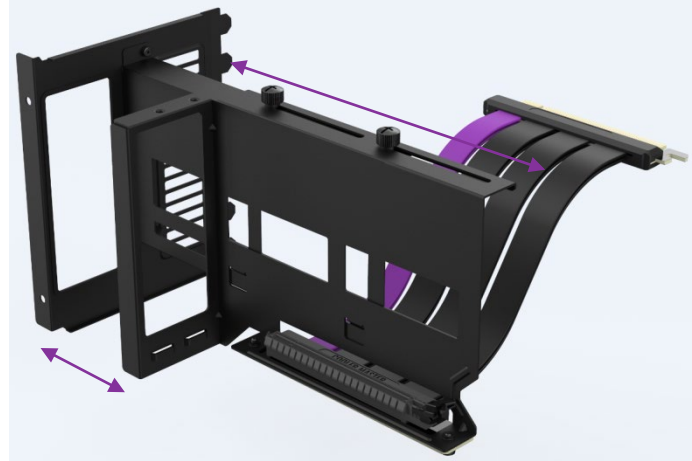
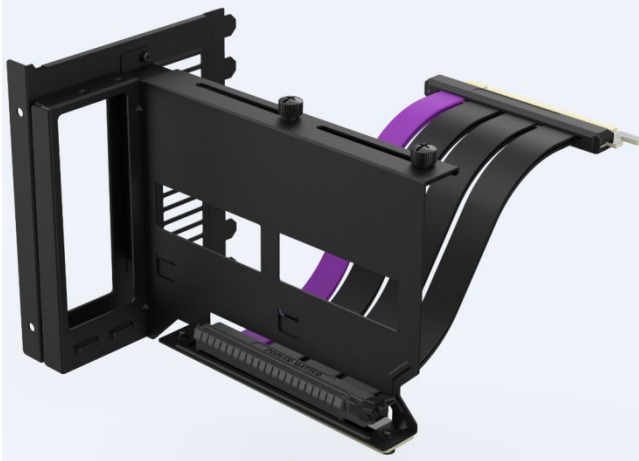
EAN code	4719512123393 (外销) 6928968314851 (内销)
UPC code	884102095719
Carton Net weight	? kg( 12pcs per carton)
Carton Gross weight	? kg ( 12pcs per carton)
Retail Box dimension (L x W x H)	166 x 147 x 201mm
Carton dimension (L x W x H)	461 x 352 x 442mm

Cont.	W/ Pallet	Carton/ Pallet	W/O Pallet
20'	3456	24	/
40'	6912	24	/
40 HQ	8640	30	/



Make It Yours.

## FEATURES



### Now Compatible With All Standard ATX Chassis

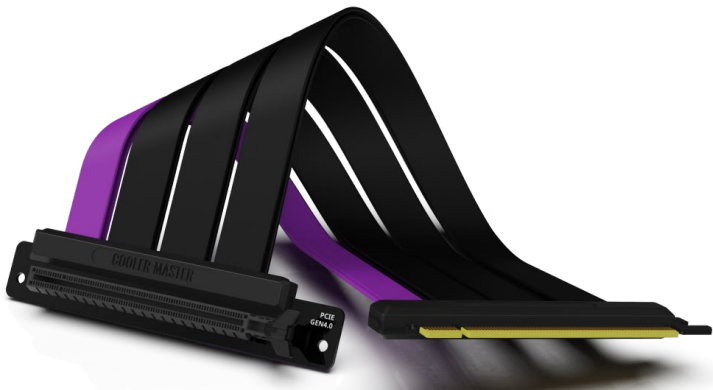
The newly revised vertical graphics card holder kit fits all standard ATX chassis with at least 7 available PCI slots.

### Durable, High Quality Materials

Thick SGCC steel prevents the largest and heaviest GPUs from bending the GPU holder.

### Modular, Instantly Adjustable Design

The position of the GPU can move back and forth to allow cables to pass through chassis with either closed or open PCI slots.



### Cooler Master PCIe 4.0 Riser Cable included

The high quality Cooler Master PCIe 4.0 Riser Cable allows data transmission at greater efficiency and higher speeds, compatible with a wide range of hardware components.