



Philips Evnia Gaming
Monitor
Full HD gaming monitor

Evnia 5000

25 (24.5"/62.2 cm diag.)
1920 x 1080 (Full HD)

25M2N5200P

Your gaming experience to the utmost

A gaming monitor that has the best of both worlds. With SmartContrast, along with the combination of AMD FreeSync Premium technology and a 280 Hz refresh rate, this product promises fluid and lag-free gaming without compromising on imaging.

Built for fast action

- AMD FreeSync™ Premium; tear free, stutter free, fluid gaming
- 280 Hz trail-blazing refresh rate for smooth gameplay
- Low input lag reduces time delay between devices to monitor
- 0.5 ms ultra-fast speed for crisp images and smooth gameplay

Immersive visuals

- IPS LED wide view technology for image and colour accuracy
- 16:9 Full HD display for crisp, detailed images
- SmartImage HDR gives optimal viewing from your HDR content
- SmartContrast for rich black details

Features designed for gamers' needs

- LowBlue mode and Flicker-free easy-on-the eyes viewing
- Tilt, swivel and height-adjust for an ideal viewing position
- EasySelect menu toggle key for quick on-screen menu access
- New OSD features for a much more engaging gaming experience

EVNIA

PHILIPS

Full HD gaming monitor
Evnia 5000 25 (24.5"/62.2 cm diag.), 1920 x 1080 (Full HD)

25M2N5200P/00

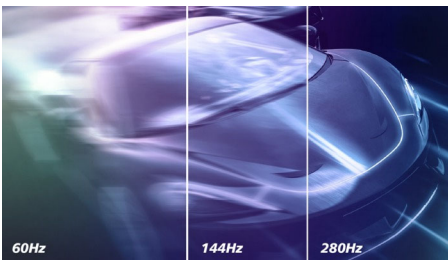
Highlights

AMD FreeSync™ Premium



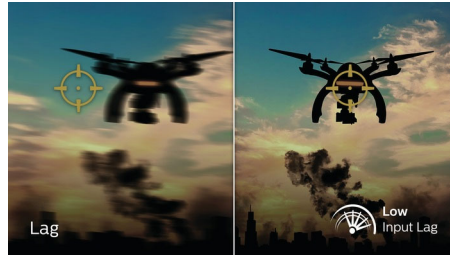
Gaming shouldn't be a choice between choppy gameplay or broken frames. AMD FreeSync™ Premium equips serious gamers with a fluid, tear-free gameplay experience at peak performance. There are no compromises, game confidently with a high refresh rate, low framerate compensation and low latency.

Accelerated 280 Hz refresh rate



The Philips Evnia 280 Hz display takes your gaming experience to new dimensions. The low input lag coupled with variable refresh rate technology gives you an immersive gaming advantage. Plus, our wide-view angle panel with high resolution provides a realistic gaming experience with unsurpassed colour accuracy. Focus on what matters as the adjustable stand gives you the comfort you deserve and flicker-free technology makes for a viewing experience that is easy on the eyes, so you can continue gaming without health worries.

Low input lag



Input lag is the amount of time that elapses between performing an action with connected devices and seeing the result on screen. Low input lag reduces the time delay between entering a command from your devices to monitor, greatly improving play on twitch-sensitive video games, particularly important for playing fast-paced, competitive games.

0.5 ms MPRT fast response



The Philips Momentum display with 0.5 ms MPRT effectively eliminates smearing and motion blur, and delivers sharper and more precise visuals to enhance your gaming experience. Fast-moving action and dramatic transitions will be rendered smoothly. The best choice for playing thrilling and twitch-sensitive games.

IPS technology



IPS displays use an advanced technology that gives you extra-wide viewing angles of 178/

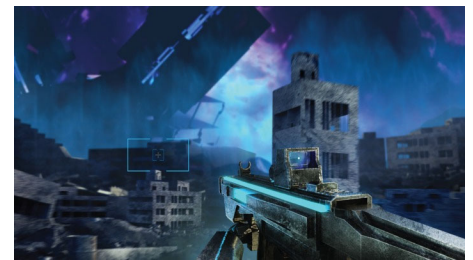
178 degrees, making it possible to view the display from almost any angle. Unlike standard TN panels, IPS displays give you remarkably crisp images with vivid colours, making them ideal not only for Photos, movies and web browsing, but also for professional applications that demand colour accuracy and consistent brightness at all times.

SmartImage HDR



Select one of SmartImage HDR modes to best suit your needs. HDR Game: optimised for playing video games. With brighter white and darker black, the gaming scene is vivid and reveals more details, easily spot enemies hiding in the dark corners and shadows. HDR Movie: ideal for watching HDR movie. Delivers better contrast and brightness for a more realistic and immersive viewing experience. HDR Photo: enhanced red, green and blue for lively visuals. DisplayHDR: VESA DisplayHDR certified*. Personal: customised settings in picture menu. *Please refer to specification for HDR grade.

New features for better gaming



Philips Evnia is equipped with new features in OSD (on-screen display). MBR Sync enables a great pairing of MPRT together with Adaptive-sync, eliminating motion blur and ghosting while guaranteeing sharp and speedy gaming visuals with high frame rates. DarkBoost enhances dark scenes, showing more details without overexposure. Smart Crosshair ensures that you never miss a single target.



Specifications

Picture/Display

- LCD panel type: IPS technology
- Backlight type: W-LED system
- Panel Size: 24.5 inch/62.2 cm
- Display Screen Coating: Anti-Glare, 3H, Haze 25%
- Effective viewing area: 543.744 (H) x 302.616 (V)
- Aspect ratio: 16:9
- Maximum resolution: HDMI: 1920 x 1080 @ 240 Hz; DP: 1920 x 1080 @ 280 Hz* (overclock)
- Pixel Density: 89.91 PPI
- Response time (typical): 1 ms (Grey to Grey)*
- MPRT: 0.5 ms
- Low Input Lag
- Brightness: 400 cd/m²
- SmartContrast: Mega Infinity DCR
- Contrast ratio (typical): 1000:1
- Pixel pitch: 0.2832 x 0.2802 mm
- Viewing angle: 178° (H)/178° (V), @ C/R > 10
- Flicker-free
- HDR: HDR 10 supported
- Colour gamut (typical): NTSC 93.4%*, sRGB 110%*
- Picture enhancement: SmartImage game
- Display colours: 16.7 M (RGB 8 bit)
- Scanning Frequency: HDMI: 30 - 274 kHz (H) / 48 - 240 Hz (V); DP: 30 - 310 kHz (H) / 48 - 280 Hz (V)
- SmartUniformity: 93 ~ 105%
- Delta E: < 2 (sRGB)
- LowBlue Mode
- EasyRead
- sRGB
- AMD FreeSync™ technology: Premium

Connectivity

- Signal Input: HDMI 2.0 x 2, DisplayPort 1.4 x 1
- HDCP: HDCP 1.4 (HDMI/DisplayPort), HDCP 2.2 (HDMI/DisplayPort)
- USB Hub: USB 3.2 Gen 1 / 5 Gbps, USB-B upstream x 1, USB-A downstream x 4 (with 2 for fast charge B.C 1.2)
- Audio (In/Out): Audio out
- Sync Input: Separate Sync

Convenience

- User convenience: Power On/Off, Menu/OK, Input/Up, Game Settings/Down, SmartImage game/Back
- OSD Languages: Brazil Portuguese, Czech, Dutch, English, Finnish, French, German, Greek, Hungarian, Italian, Japanese, Korean, Polish, Portuguese, Russian, Spanish, Simplified Chinese, Swedish, Turkish, Traditional Chinese, Ukrainian
- Other convenience: Kensington lock, VESA mount (100 x 100 mm)
- Plug and Play Compatibility: DDC/CI, Mac OS X, sRGB, Windows 11/10/8.1/8

Stand

- Height adjustment: 130 mm
- Swivel: -/+ 30 degree
- Tilt: -5/20 degree
- Pivot: -/+ 90 degree

Power

- On mode: 18.7 W (typ.)
- Standby mode: 0.5 W (typ.)
- Off mode: 0.3 W (typ.)
- Energy Label Class: E
- Power LED indicator: Operation - White, Standby mode - White (flashing)
- Power supply: Internal, 100–240 VAC, 50–60 Hz

Dimensions

- Product with stand (max height): 557 x 508 x 239 mm
- Product without stand (mm): 557 x 331 x 64 mm
- Packaging in mm (W x H x D): 730 x 420 x 188 mm

Weight

- Product with stand (kg): 4.64 kg
- Product without stand (kg): 3.30 kg
- Product with packaging (kg): 7.60 kg

Operating conditions

- Temperature range (operation): 0°C to 40 °C
- Temperature range (storage): -20°C to 60 °C
- Relative humidity: 20%-80 %
- Altitude: Operation: +12,000 ft (3658 m), Non-operation: +40,000 ft (12,192 m)
- MTBF: 50 000 (Excluded backlight) hour(s)

Sustainability

- Environmental and energy: RoHS
- Recyclable packaging material: 100 %
- Specific Substances: Mercury free, PVC/BFR free housing

Compliance and standards

- Regulatory Approvals: CB, CE Mark, FCC Class B, ICES-003, CU-EAC, EAEU RoHS, TUV/ISO9241-307, TUV-BAUART

Cabinet

- Colour: Dark Slate
- Finish: Textured

What's in the box?

- Monitor with stand
- Cables: HDMI cable, DisplayPort cable, USB upstream cable, Power cable
- User Documentation
- Accessory: VESA bracket

Issue date 2023-05-03

© 2023 Koninklijke Philips N.V.
All Rights reserved.

Version: 3.2.1

Specifications are subject to change without notice.
Trademarks are the property of Koninklijke Philips N.V.
or their respective owners.

12 NC: 8670 001 86812
EAN: 87 12581 79960 1

www.philips.com

* "IPS" word mark / trademark and related patents on technologies belong to their respective owners.
* The maximum resolution works for DP input only.
* For best output performance, please always ensure that your graphic card is capable of achieving the maximum resolution and refresh rate of this Philips display.
* Response time value equal to SmartResponse
* MPRT adjusts the brightness for blur reduction, so the brightness cannot be adjusted while MPRT is turned on. To reduce motion blur, the LED backlight will strobe in time with the screen refresh rate, which may cause a noticeable change in brightness.
* MPRT is a gaming-optimised mode. Turning on MPRT may cause noticeable screen flickering. It is recommended to turn this mode off when you are not using the gaming function.
* NTSC Area based on CIE 1976
* sRGB Area based on CIE1931
* 2020 Advanced Micro Devices, Inc. All rights reserved. AMD, the AMD Arrow logo, AMD FreeSync™ and combinations thereof are trademarks of Advanced Micro Devices, Inc. Other product names used in this publication are for identification purposes only and may be trademarks of their respective companies.
* The monitor may look different from feature images.