



Welcome to a new class of high performance motherboards with the EVGA Z97 lineup. These platforms offer a return to greatness with a new GUI BIOS interface, reimagined power VRM that focuses on efficiency, and are loaded with features such as Intel(r) Gigabit LAN, Native SATA 6G/USB 3.0 and more.

Built from the ground up to give you all the essentials you need for overclocking, with a GUI BIOS that is focused on functionality, new software interface for overclocking in the O.S., ultra high quality components, robust PCI-E 3.0, and memory trace layout.

With these features and more, it is clear that the EVGA Z97 motherboards are engineered to exceed the best.

KEY SPECS

- Supports Intel Core 4th and 5th Generation Processor family for LGA Socket 1150
- Intel® Z97 Chipset
- Enthusiast Layout Supporting 2-Way SLI®, 3-Way SLI®, 4-Way SLI® & CrossfireX™
- 4 DIMM Dual-Channel DDR3 2666MHz+ (Up To 32GB)
- PCI Express® 3.0 Ready
- 2 DisplayPort Ports
- 6 USB 2.0 Ports (four rear panel, two onboard)
- 6 USB 3.0 Ports (four rear panel, two onboard)
- 8 SATA III/6G Ports
- 2 Intel Gigabit Ethernet Ports (10/100/1000)
- Creative Sound Core3D Quad-Core Audio Processor + Optical
- E-ATX Form Factor

DESIGN DETAILS

Supported CPUs - Intel® 4th & 5th Generation Socket 1150 Processors
Socket Type - LGA1150
PCH - Intel® Z97

DIMM QTY - 4 DIMM Slots
Memory Type - DDR3 800/1066/1333/1600/2133/2400/2666MHz+
Memory Capacity - 32GB

SATA III 6.0Gb/s Ports/Controller - 6 / Z97 PCH - 2 / Marvell 9220
RAID Support - RAID 0, 1, 5, 10, JBOD

USB 2.0 Ports/Controller - 6 / Intel® Z97 PCH
USB 3.0 Ports/Controller - 6 / Intel® Z97 PCH

Network Speed - 10/100/1000
Network Ports/Controller - 2 / Intel® i217/i210

Audio - 6 Channel
Audio Controller - Creative Sound Core3D Quad-Core Audio Processor + Optical

PCI-E Slot Arrangement - 1x16, 2x16, 3x8, 4x8
PCI-E Mechanical Slots - 5
PCI-E x1 Slots - 1
mPCI-E/mSATA - 1

BIOS Type - AMI / UEFI
Software - EVGA E-LEET X Tuning Utility

Fan Headers - 5

DIMENSIONS

- Width: 10.375in – 263.5mm
- Length: 12in – 304.8mm
- Form Factor: E-ATX

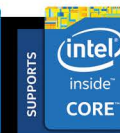
ACCESSORIES

- EVGA Driver Installation Disc
- Rear Case I/O Panel
- Rear Case I/O Cover
- 1 Probelts Cable
- 4 GPU Link Cables
- 4 SATA 6G Data Cables
- 2-way SLI Bridge
- 3-way SLI Bridge
- 4-way SLI Bridge
- 2 Port USB 3.0 Bracket
- Manual



PRODUCT WARRANTY

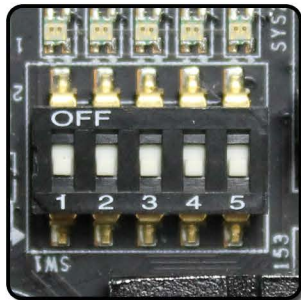
This product is covered under EVGA's 3 year warranty which covers parts and labor. Further warranty extension is available upon registration within 30 days of purchase. For more details please visit www.evga.com/warranty



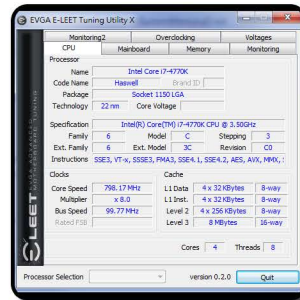
BRAND NEW GUI BIOS INTERFACE
Focused on functionality



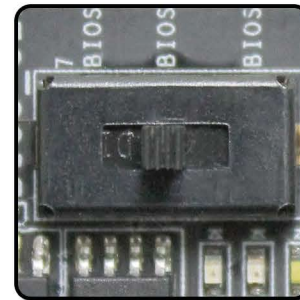
PCI-E DISABLE SWITCH
Quickly and easily troubleshoot!



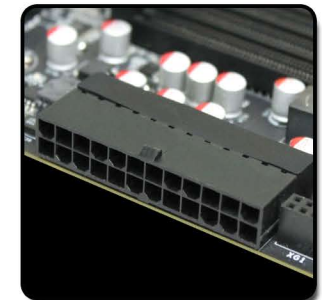
E-LEET X TUNING UTILITY
Adjust your overclocking in 0.5.



TRIPLE BIOS SUPPORT
Use 3 separate profiles!



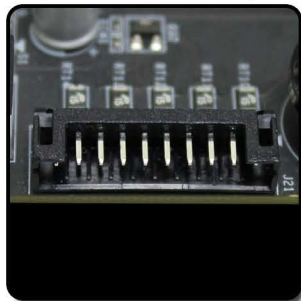
RIGHT ANGLED 24 PIN
Improved cable management



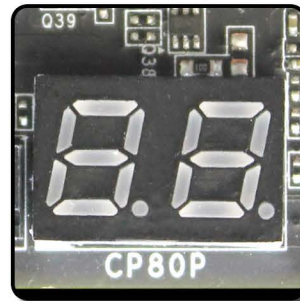
HIGHER GOLD CONTENT
Lower inductance, better power delivery!



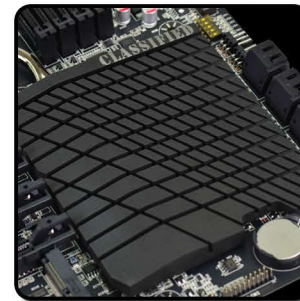
EZ VOLTAGE READ POINTS
Easy read dedicated read points



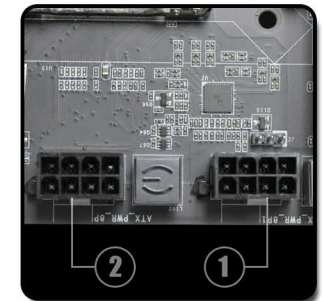
ONBOARD CPU TEMP MONITOR
Monitor CPU temps quickly & easily



PASSIVE CHIPSET HEATSINK
No fans, lower noise, longer lifespan



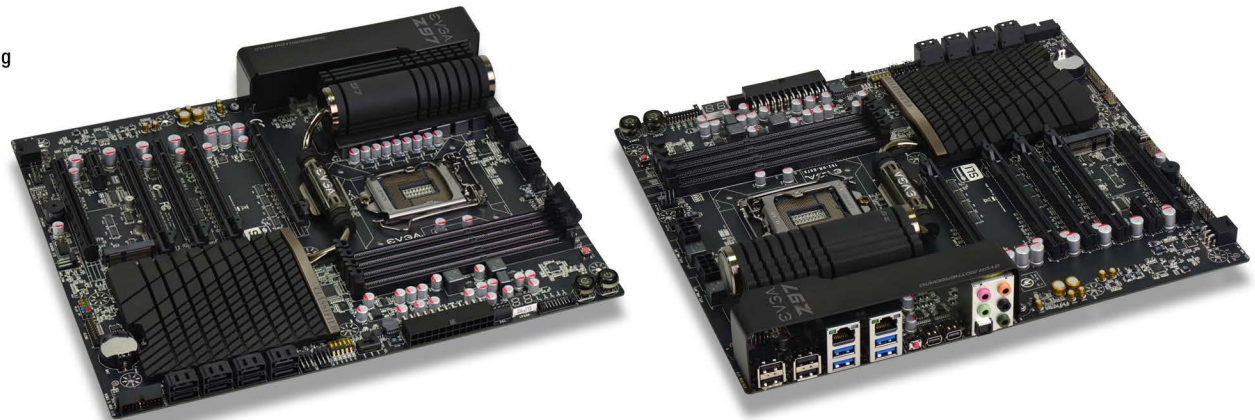
DUAL 8 PIN CPU POWER
Optional 8 pin provides up to 600w



8 PHASE PWM
Cleanest variable power switching



8 LAYER PCB
Improved overclock stability and PCB cooling



PRODUCT WARRANTY

This product is covered under EVGA's 3 year warranty which covers parts and labor. Further warranty extension is available upon registration within 30 days of purchase. For more details please visit www.evga.com/warranty

