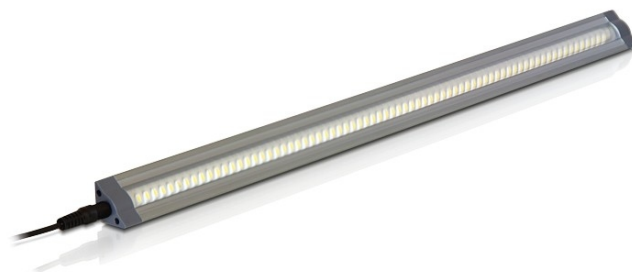


Delock Lighting LED Light Bar triangular V2 100cm with 144 SMD LED white

Opis

With the energy saving LED light bar it is possible to create beautiful light effects, e.g. under cabinets or behind paintings. Thanks to the included mounting clips the installation is very easy. The light bars can be connected with each other using the included connectors or connection cables.



Specyfikacja

- Operating voltage: 24V DC
- Light bar with 144x SMD3528 LED in white
- Power consumption: 10.0W
- Current demand: 420mA
- Colour temperature: ca. 4000K
- Luminous flux: 700 Lumen
- Light intensity: 285 Lux / 1m
- Beam angle: 90°
- Protection class: IP20
- Dimensions: 1000x33x20mm (l/w/h)

Optional accessory

Item [46260](#): Power supply 12W incl. connection cable by Navilock

Item [46262](#): Power supply 36W incl. connection cable by Navilock

Zawartość opakowania

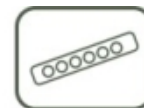
- LED light bar
- Plastic connector
- Connection cable
- Mounting clamps & screws
- Manual

Numer artykułu 46272

EAN: 4043619462728

Kraj pochodzenia: China

Opakowanie:



Zdjęcia

