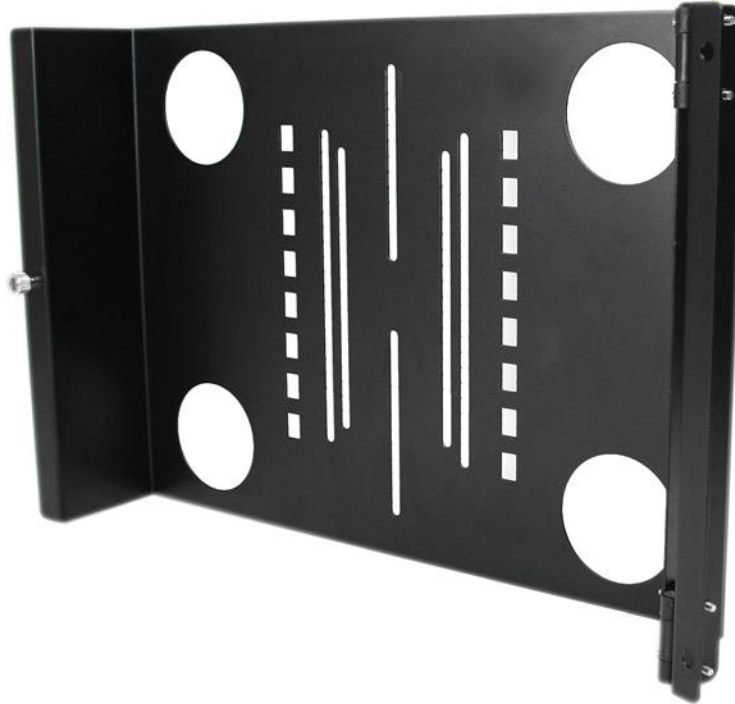


Universal Swivel VESA LCD Mounting Bracket for 19in Rack or Cabinet

Product ID: RKLcdbkt



The RKLcdbkt Universal Swivel VESA LCD Mounting Bracket for 19in Rack or Cabinet lets you mount almost any retail LCD or touch screen into a server rack/cabinet, with tilt and swivel motion for maximum visible range. This TAA compliant product adheres to the requirements of the US Federal Trade Agreements Act (TAA), allowing government GSA Schedule purchases.

Hinged on one of the rail mounts, the LCD bracket can be released to swing out from the rack, as well as offering vertical tilt allowing for perfect placement of your LCD panel with minimal adjustment.

Constructed from solid cold pressed steel (SPCC), the LCD mounting bracket is designed to support 75mm and 100mm VESA mounted panels, and meets ANSI/EIA RS-310-D rack mounting standards.

A versatile option, the LCD mounting bracket also supports wall-mounted installations by reversing the bracket or attaching to a wall mounted bracket or rack.

Backed by a StarTech.com Lifetime warranty.

Certifications, Reports and Compatibility



Applications

- Ideal for installing a retail LCD monitor into an existing Rack or Cabinet
- Installing a touch screen display into a rack or cabinet while retaining access behind it with the swing it out arm
- Can be mounted at any height in the rack; with swivel bracket the screen is always visible
- Mounting a LCD monitor or TV to the wall
- Use for uptime/process monitoring with big screens over 19" when mounted outwards

Features

- 100mm and 75mm VESA mounting hole pattern
- Meets ANSI/EIA RS-310-D standards
- TAA compliant for GSA Schedule purchases
- Constructed from solid steel at 2.0mm thick, this bracket is designed for durability

Hardware	Warranty	Lifetime
	Frame Type	Steel
	Industry Standards	EIA RS310-D
	U Height	7U
Performance	VESA Compliance	100x100mm 75x75mm
	Weight Capacity	35.4 lb [16 kg]
Physical Characteristics	Color	Black
	External Depth	4.8 in [122 mm]
	External Height	12.2 in [311 mm]
	External Width	19.1 in [485.6 mm]
	Internal Width	16.7 in [425.3 mm]
	Product Weight	6.1 lb [2.7 kg]
Packaging Information	Shipping (Package) Weight	6.9 lb [3.1 kg]
What's in the Box	Included in Package	1 - Mounting back plate 1 - LCD Swivel Mounting Bracket 1 - Package of assembly screws (4 x M5*16 Panel screws, 4 x M5 Cage nuts, 2 x M4*8 screws) 1 - Package of 4 LCD mounting Screws

Product appearance and specifications are subject to change without notice.