



CREATOR 4

Economical industrial 3D printer
with multi-material applications



Creator 4 is a multi-functional, flexible and high-performance industrial 3D printer. It is equipped with three types of extruders, therefore various printing needs can be met by selecting the matching printing module according to different types of filaments.

EXTRUDER
HS

Printing for carbon fiber composite

360 °C

1.75 mm

150 mm/s

PACF	PET-CF	PPCF
PAGF	PC-ABS	PPS-CF
PPS		

EXTRUDER
HT

Printing for engineering filament

320 °C

1.75 mm

200 mm/s

PC	PA	PP
PETG	ASA	ABS
PLA	PC-ABS	PAHT

EXTRUDER
F

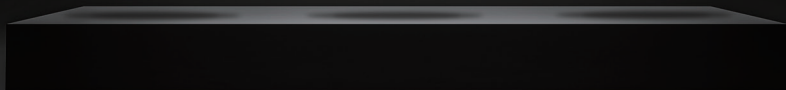
Printing for 85A flexible filament

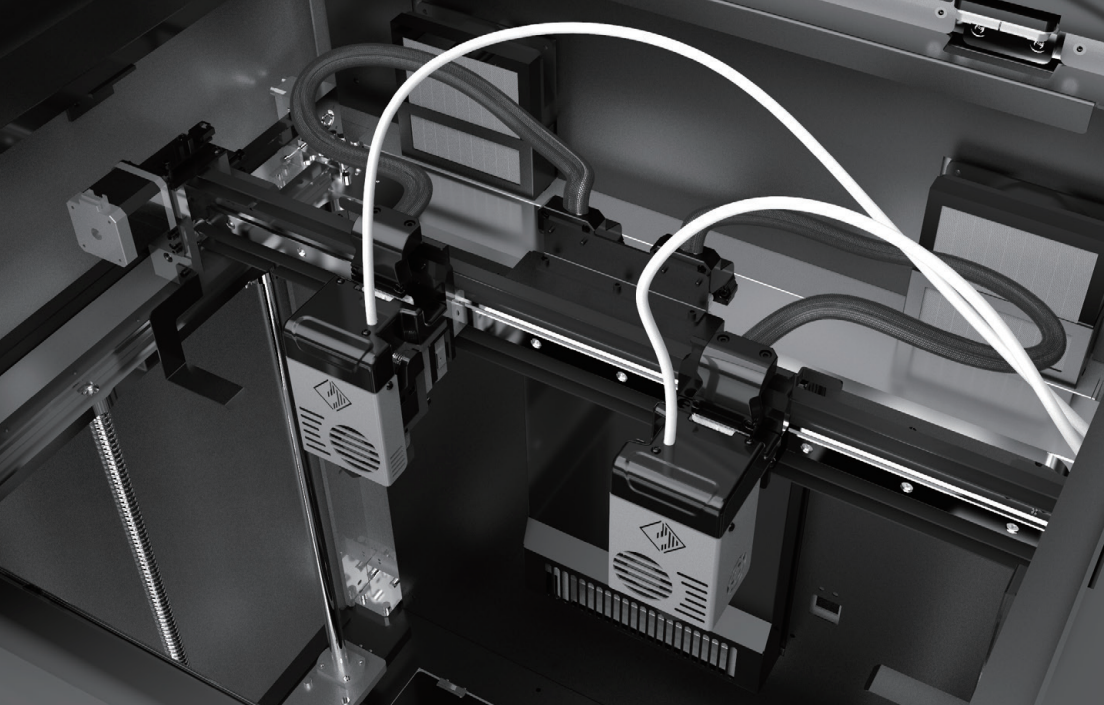
265 °C

2.85 mm

100 mm/s

TPU 85A	TPE	TPB
TPC		

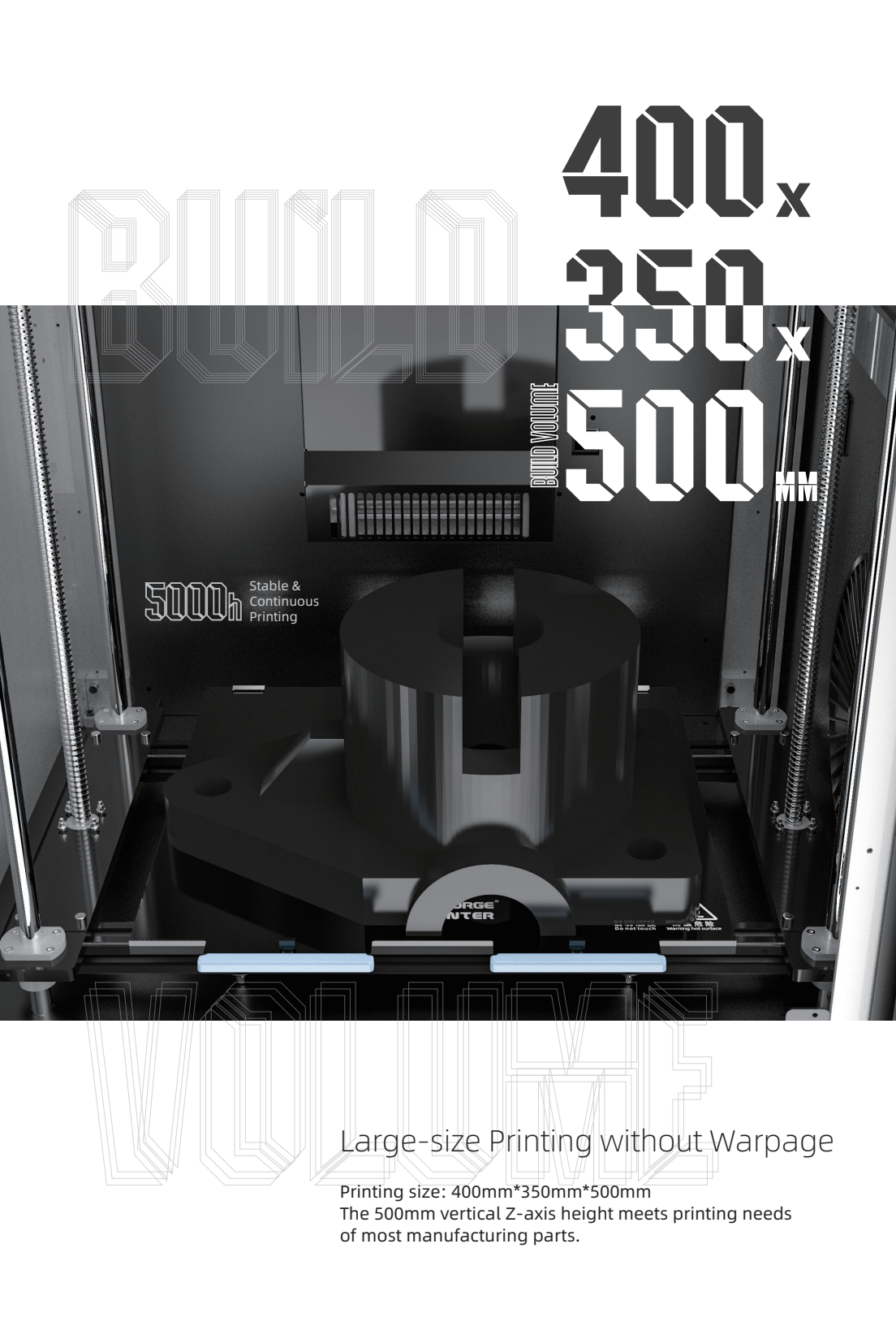




IDEX

Independent Double Extruder

The two extruders can work separately during printing to meet the needs of different production projects. Therefore, Creator 4 supports simultaneous printing of identical or symmetrical models, doubling the efficiency of mass production; It also supports the printing of the model material and support material in conjunction and thus all kinds of models of complex shapes can be easily printed.



400x

350x

500mm

BUILD VOLUME

5000h Stable & Continuous Printing

Large-size Printing without Warp

Printing size: 400mm*350mm*500mm
The 500mm vertical Z-axis height meets printing needs of most manufacturing parts.



65°C

Maintain a constant chamber temperature at 65°C without warpage printing

The advanced thermal-control software design can preheat and keep the temperature before and after printing. The thermal-control system maintains a constant chamber temperature at 65°C, reducing the thermal contraction of the model through the printing process. It avoids the warpage and cracking of ABS/PC/PA and other engineering filaments and guarantees the quality and dimensional accuracy of the model, improving the success rate of printing.

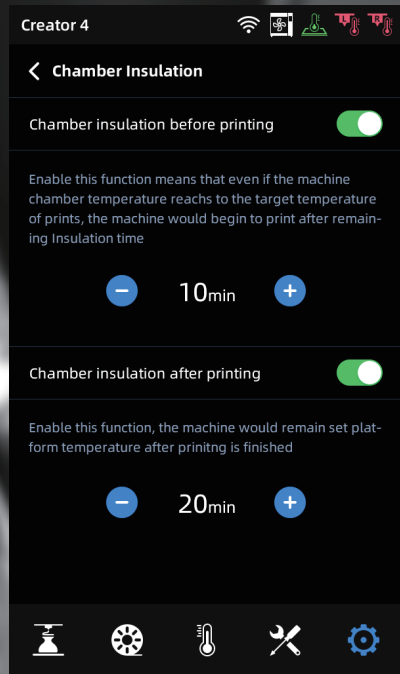
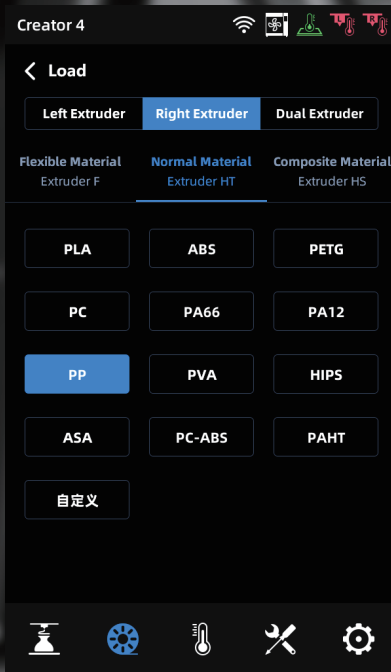
Adapt to almost all engineering materials and composite materials on the market, meet the printing requirements of various functional parts, and provide a higher performance and more economical industrial production mode.

PC PA ABS

Friendly and intelligent filament management system

Before printing, the temperature can be matched automatically by the intelligent system according to the type of the filament. The smart setting that maintains a constant chamber temperature guarantees the printing success rate;

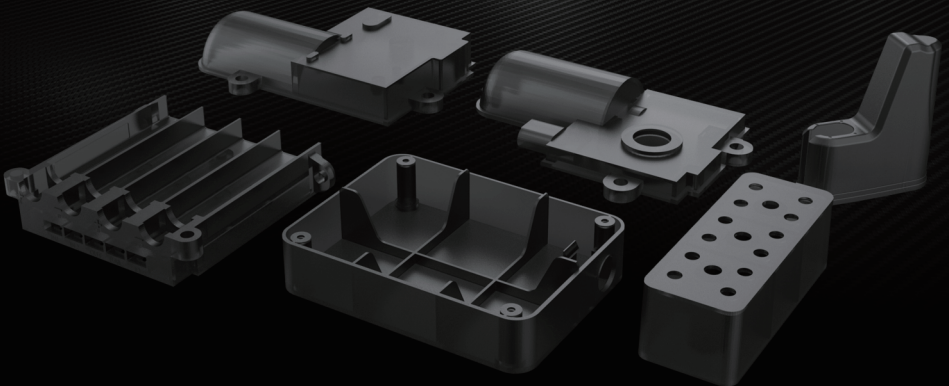
After printing, the intelligent control system helps to adjust the cooling temperature, in order to get ready for the next printing without waiting again.



LEHVOSS

Open filament system
that supports customization

The Creator 4 series is suitable for Flashforge supreme filaments. This series is developed in cooperation with German LEHVOSS, and the raw materials are specially formulated by LEHVOSS. It reduces the heat shrinkage during printing, and also decreases the warpage and the need for high chamber temperature. It meets the strength and temperature resistance required by engineering mechanics. The filaments are certified by the LEHVOSS German laboratory.



MANUFACTURING

- ◆ Temporary emergency maintenance and replacement of wearing parts of the equipment and quicker response to relieve the tight supply chains.
- ◆ Quickly manufacture parts for end-use applications, customize the tooling and fixtures required for printing production lines, and replace traditional outward processing.

ENGINEERING

- ◆ Reduce the time and costs of parts for outward processing, with on-demand printing in the workroom and instant verification.
- ◆ Functional verification for the product design process to achieve the desired development results. Reduce the costs by verifying the design before investing in the molds.

SERVICE

- ◆ High-fidelity prototype printing with fast delivery and quick response to user needs.
- ◆ Produce low-volume batches of end-use parts for customers with industrial-grade materials.

Specifications

Type	/	Creator 4 - A	Creator 4 - S
Extruder	Extruder - F (Optional)	Extruder - HT	Extruder - HS
Filament	TPU85A/TPE TPB/TPC	PLA/PETG/PC-ABS/PAHT/ABS/ASA/PP PA/PC/PVA	PACF/PET-CF/PP-CF PA-GF/PC-ABS/PP-GF PPS-CF/PPS
Extruder Type	IDEX	IDEX	IDEX
Nozzle Size	0.4mm	0.4(0.6/0.8)mm	0.4(0.6/0.8)mm
Extruder Temperature	265°C	320°C	360°C
Maximum Chamber Heating Temperature	65°C	65°C	65°C
Build Volume	400*350*500mm	400*350*500mm	400*350*500mm
Printing Speed	100mm/s	200mm/s	150mm/s
Maximum Platform Heating Temperature	130°C	130°C	130°C
Touch Screen	7-Inch touch screen	7-Inch touch screen	7-Inch touch screen
Support Filament Weight	2kg/1kg	2kg/1kg	2kg/1kg



Follow Us

Zhejiang Flashforge 3D Technology Co., Ltd.

Address: No.518 XianYuan Road, Jinhua City, Zhejiang Province, China

Service Hotline: +86 579 82273989

support@flashforge.com