



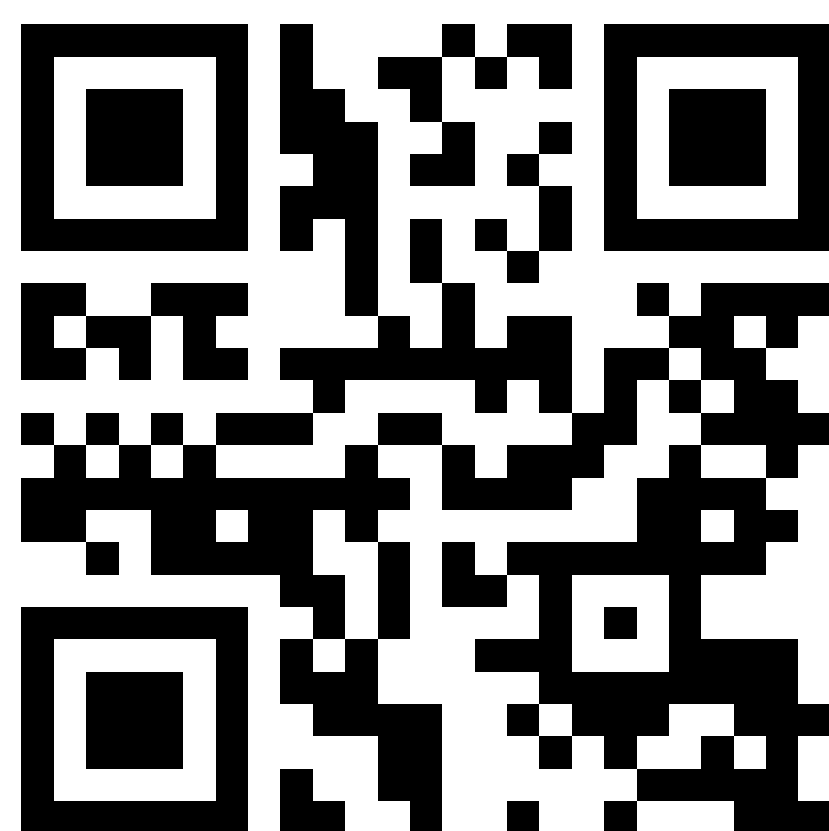
# User Manual



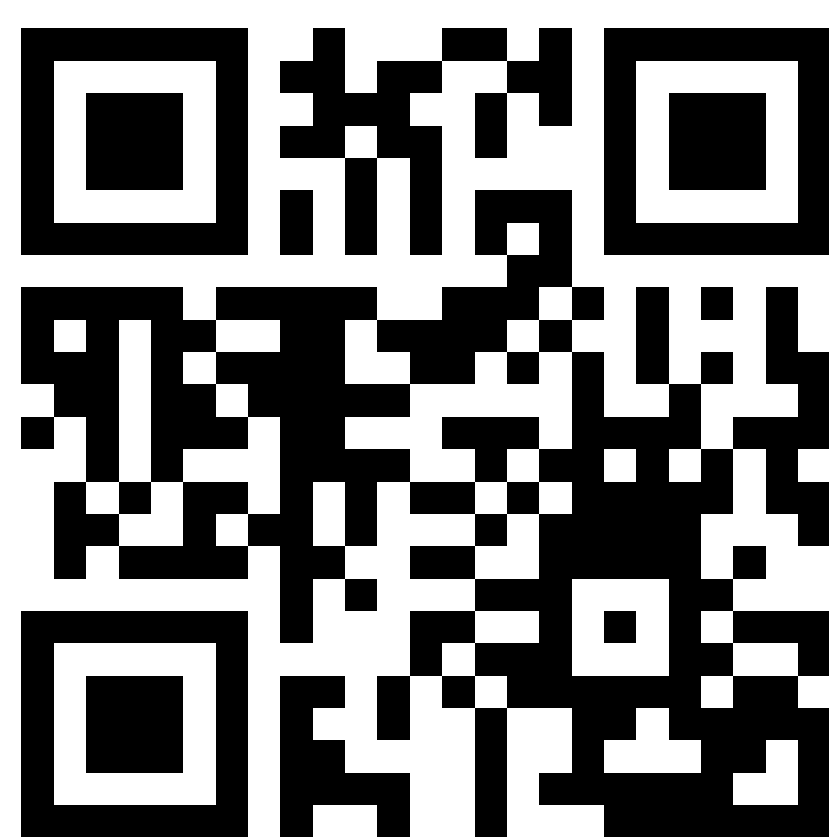
# **F5**

***Full Tower***

# Product Video Information



F5 Product Video



F5 Installation Guide Video

# Product Story

The F5 is a breakthrough full-tower PC case that supports the latest back-connect M/Bs.

It features a swappable front panel, tempered glass, and supports high-end hardware. The functionality and cooling performance makes the F5 the ideal PC enclosure for you.

**F5**  
Full Tower



# Specifications

## InWin F5 Chassis

<b>Model</b>	F5	
<b>Model Number</b>	IW-CS-F5BLK-3AN140	IW-CS-F5WHI-3AN140P
<b>Colors</b>	Black	White
<b>Case Type</b>	Full Tower	
<b>Materials</b>	SECC, Tempered Glass	SECC, Tempered Glass, Wood
<b>M/B Compatibility</b>	12" x 13" E-ATX, ATX, Micro-ATX, Mini-ITX	
<b>Expansion Slots</b>	8 x PCI-E 3 x Vertical PCI-E (Riser Cable Optional; Not Included in Package)	
<b>Maximum Compatibility</b>	GPU Length: 410 - 435 mm CPU Heatsink Height: 180 mm	
<b>I/O Ports</b>	1 x USB 3.2 Gen 2x2 Type-C 2 x USB 3.2 Gen 1 HD Audio Combo (CTIA – SPK/Mic)	
<b>Internal Drive Bays</b>	2 x 3.5" / 4 x 2.5" 2 x 2.5"	
<b>Thermal Solution Compatibility</b>	Air Cooling Fans: Front: 2 x 120 / 140 mm Top: 3 x 120 / 140 mm Rear: 1 x 120 / 140 mm Bottom: 3 x 120 / 140 mm (3 InWin AN140 / AN140P Fans Included)  Water Cooling Radiator: Front: 1 x 240 / 280 mm Top: 1 x 360 / 420 mm Bottom: 1 x 360 / 420 mm	
<b>Power Supply Compatibility</b>	PSII: ATX12V - Length up to 230 mm	
<b>Product Dimensions (L x W x H)</b>	510 x 235 x 543 mm 20 x 9.2 x 21.3"	
<b>Package Dimensions (L x W x H)</b>	653 x 600 x 355 mm 25.7 x 23.6 x 13.9"	
<b>Net Weight</b>	10.73 Kg / 23.6 lbs	10.57 Kg / 23.3 lbs
<b>Gross Weight</b>	12.9 Kg / 28.4 lbs	12.68 Kg / 27.9 lbs

\* InWin's products comply with RoHS regulation.

\* Specifications may vary based on different regions.



# Specifications

## InWin Neptune Series Fan

<b>Model</b>	Neptune AN140	Neptune Pure AN140P
<b>Model Number</b>	IW-FN-AN140-3PK	IW-FN-AN140P-3PK
<b>Colors</b>	Black	White
<b>Fan Size</b>	140 x 140 x 25 mm	
<b>Materials</b>	PBT, PC	
<b>Rated Voltage</b>	DC 12V	
<b>Rated Power</b>	2.16W	
<b>Rated Current</b>	0.19A	
<b>ARGB Rated Voltage</b>	DC 5V	
<b>ARGB Rated Power</b>	1.4W	
<b>ARGB Rated Current</b>	0.28A	
<b>Speed Mode</b>	PWM 900 - 1800 +/- 10% RPM	
<b>Air Flow</b>	41.67 - 88.89 CFM	
<b>Air Pressure</b>	0.49 - 2.18 mm / H2O	
<b>LED</b>	Addressable RGB	
<b>Connector (Fan to Fan)</b>	Non-Modular Cables	
<b>Connector to M/B</b>	4-Pin (12V, PWM), 3-Pin (5V, ARGB)	
<b>Noise Level</b>	24.5 dB(A) (Normal)	
<b>Bearing Type</b>	Long Lifespan Sleeve Bearing	
<b>MTBF</b>	>36,000 hrs.	
<b>Net Weight</b>	629 g / 1.39 lbs	
<b>Gross Weight</b>	946 g / 2.09 lbs	
<b>Package Dimensions (L x W x H)</b>	151 x 91 x 190 mm 5.9 x 3.58 x 7.48"	
<b>Warranty</b>	3 Years	

\* InWin's products comply with RoHS regulation.

\* Specifications may vary based on different regions.



# Package Contents



## Accessories Bag

Hexagon Head Screws x 18



Cable Ties x 5



2.5" SSD Screws x 18



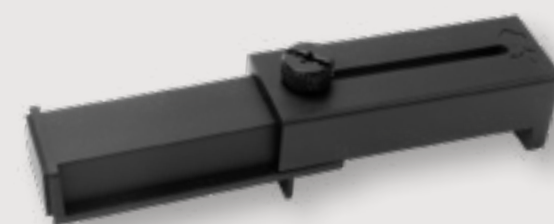
3.5" HDD Screws x 10



Motherboard Stand-offs x 11



Magnetic GPU Holder x 1



Motherboard Stand-off Socket x 1



Velcro Strips x 5



PCI-E Slot Brackets x 3



PWM Fan Extension Cable x 2



ARGB Extension Cable x 2



QR Code Card x 1





# Case Structure



- ① USB 3.2 Gen 2x2 Type-C
- ② USB 3.2 Gen 1
- ③ HD Audio Combo (CTIA – SPK/Mic)
- ④ Power Button
- ⑤ SECC Front Panel
- ⑥ Mesh Front Panel
- ⑦ Maple Wood Panel
- ⑧ Tinted Glass Panel



# Case Structure

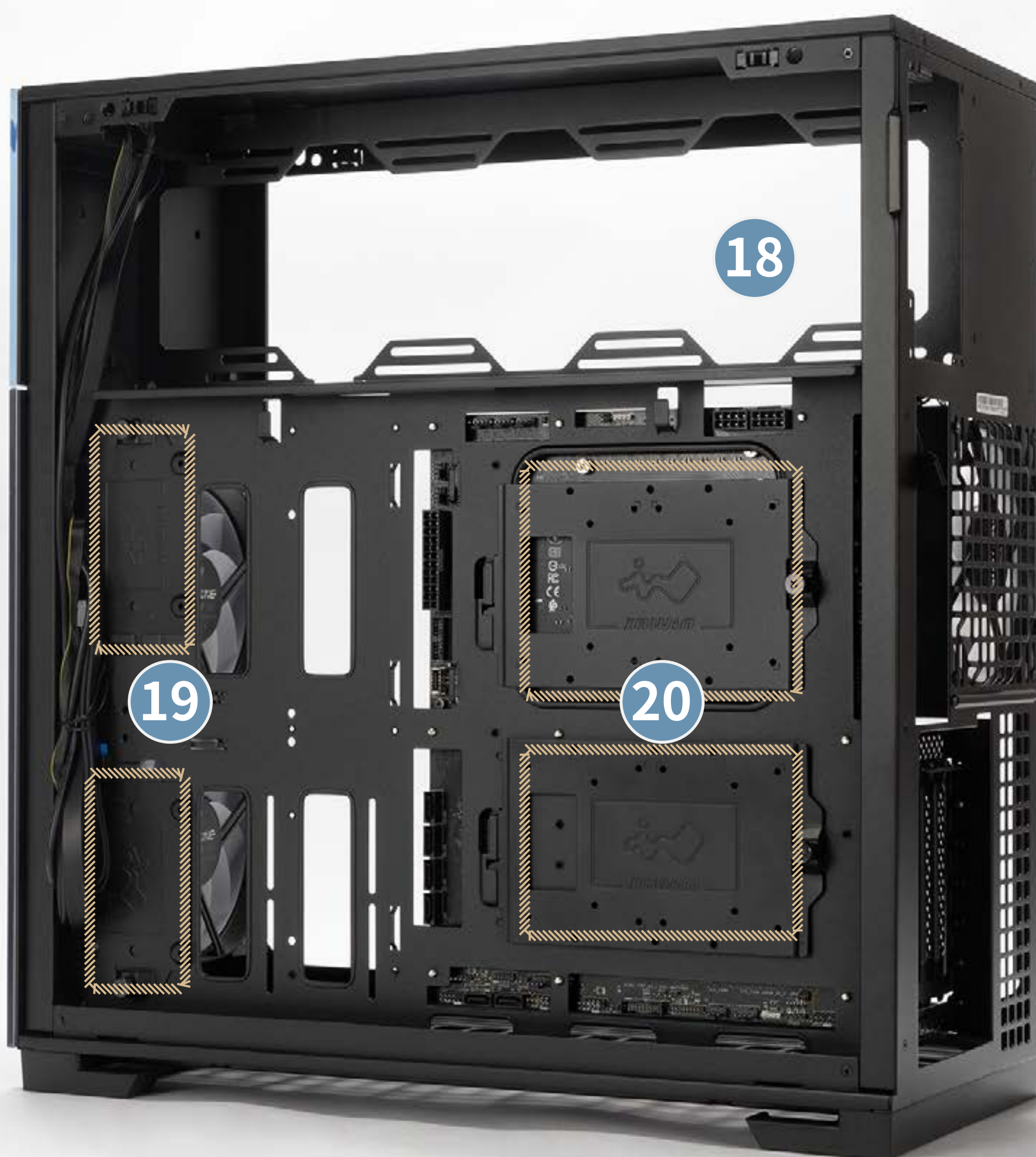


- 9 Top Fans / Radiator Mounting Area
- 10 Front Fans / Radiator Mounting Area  
(2 InWin AN140 or AN140P Fan Pre-Installed)
- 11 Bottom Fans / Radiator Mounting Area
- 12 Rear Fan Mounting Area  
(1 InWin AN140 or AN140P Fan Pre-Installed)
- 13 Motherboard Mounting Area
- 14 CPU Cooler Installation Cut-Out Hole
- 15 Modular PCI-E Slot
- 16 Magnetic GPU Holder Placement Area
- 17 Shock-Proof Stands



# Case Structure

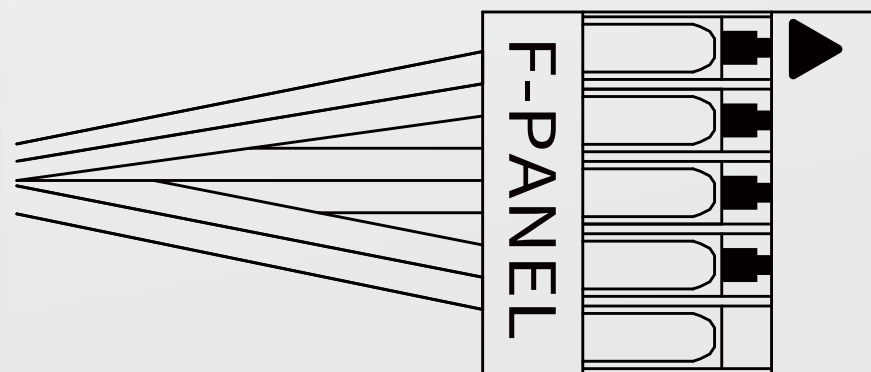
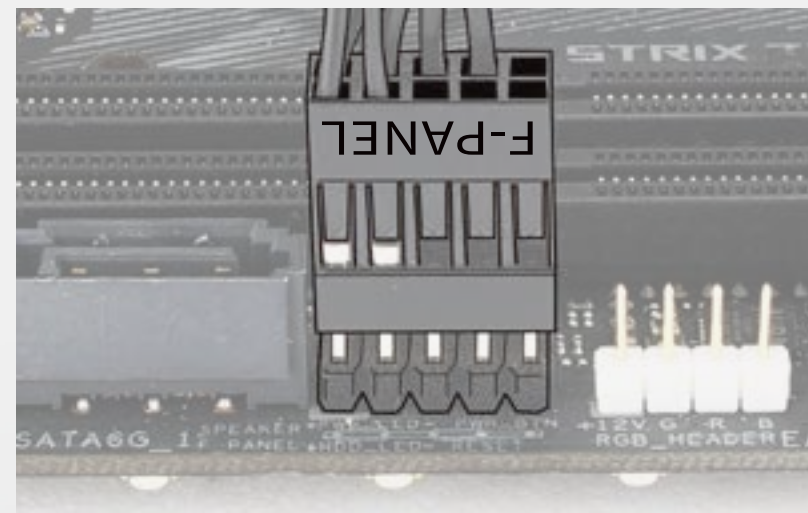
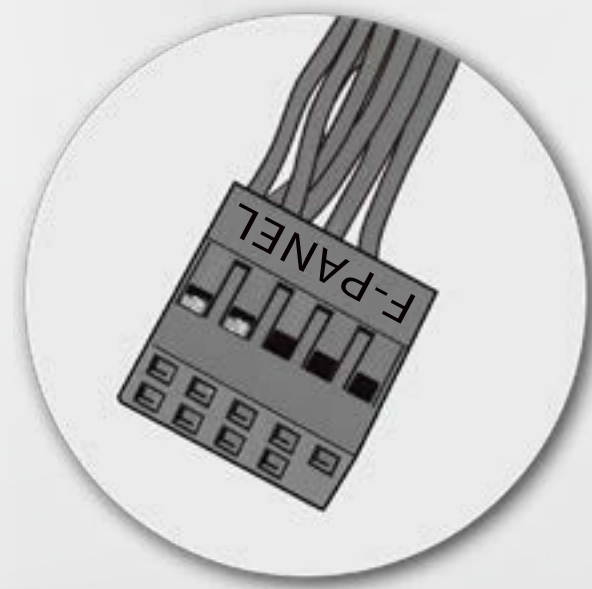
- 18 Power Supply Mounting Area
- 19 2.5" Drive Bays
- 20 3.5" / 2.5" Drive Bays
- 21 Anti-Dust Filters





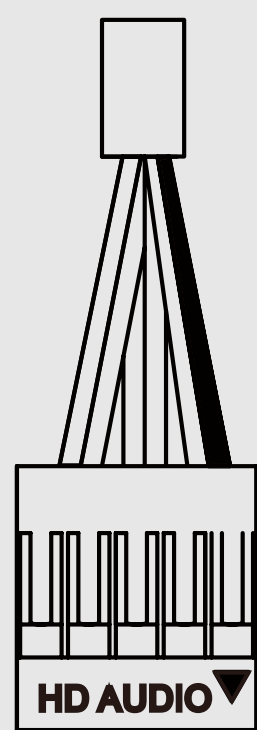
# Cable Connection

## I/O Wires



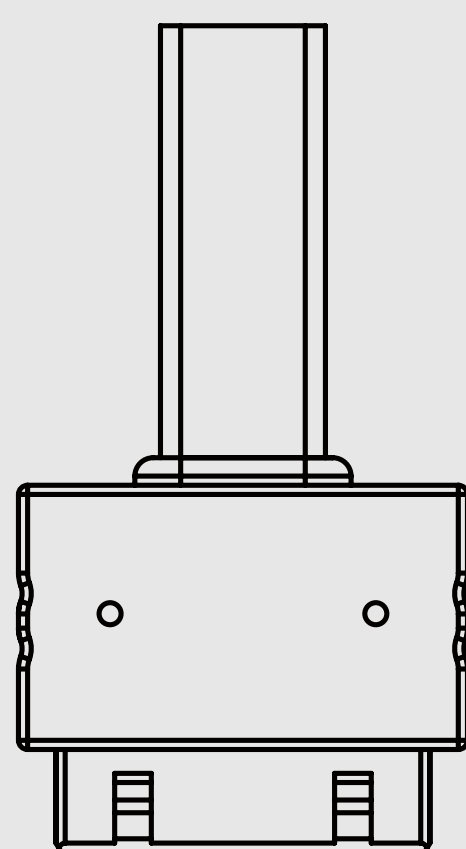
Black(P_LED) 1		2 Black (HDD)
Black(P_LED) 3		4 Black (HDD)
Black(P_SW) 5		6 NC
Black(P_SW) 7		8 NC
Key 9		10 NC

## HD Audio Header



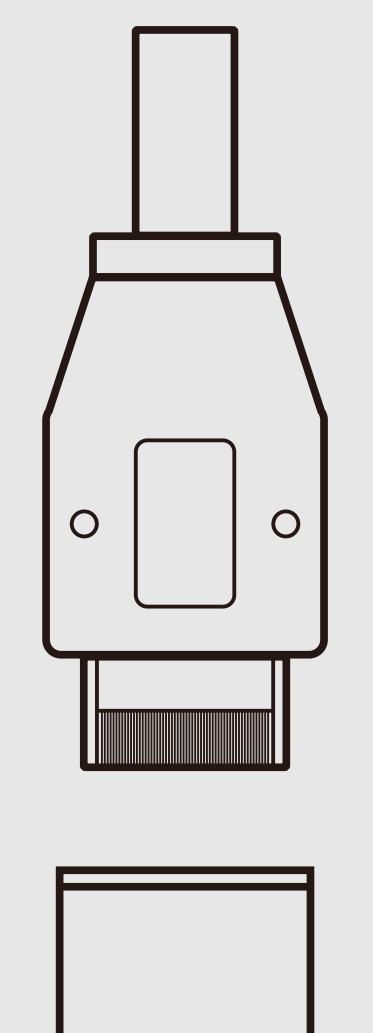
PORT2_L	BLUE	10		9	BROWN	SENSE2_R
SENSE_SEND	PURPLE	8		7		KEY
PORT2_R	YELLOW	6		5	WHITE	SNAS1_R
PORT1_R	RED	4		3	ORANGE	PRESENCE#
PORT1_L	GREEN	2		1	BLACK	GND

## USB 3.2 Gen 1



PIN#1		PIN#19
Vbus	1	19 Vbus
IntA_P1_SSRX-	2	18 IntA_P2_SSRX-
IntA_P2_SSRX+	3	17 IntA_P2_SSRX+
GND	4	16 GND
IntA_P1_SSTX-	5	15 IntA_P2_SSTX-
IntA_P1_SSTX+	6	14 IntA_P2_SSTX+
GND	7	13 GND
IntA_P1_D-	8	12 IntA_P2_D-
IntA_P1_D+	9	11 IntA_P2_D+
ID USB0C-	10	
		PIN#10
		PIN#11

## USB 3.2 Gen 2x2 Type-C





# Notices and Warranty

## ■ Notices

1. Please follow the user manual for installation guidelines.
2. When installing the computer components, please use antistatic precautions to prevent ESD (electrostatic discharge) damage. Failure to take the necessary precautions may result in injury to the installer and/or damage to the machine. Incorrect installation may burnout the motherboard and other system components.
3. To avoid any damages, please do not use this product for any other purpose than its intended use.
4. Any modifications may damage the product.
5. Please remove all internal devices before shipping or moving. (Including power supply, hard drives, motherboard, CPU, etc.)
6. When storing the case, please keep this product away from high temperatures. Keep away from machines such as heaters that might cause high temperatures.
7. For more technical support, please visit the InWin Forum at <https://forum.in-win.com>.

## ■ Warranty

1. For more detailed warranty information, please visit the InWin retail website at [www.in-win.com](http://www.in-win.com).
2. The actual product is subject to change without prior notice. In Win Development Inc. reserves the right to make final modifications.



***InWin***

**CONTEMPORARY & INNOVATIVE**

**w w w . i n - w i n . c o m**

Copyright © 2024 In Win Development Inc. All Rights Reserved.