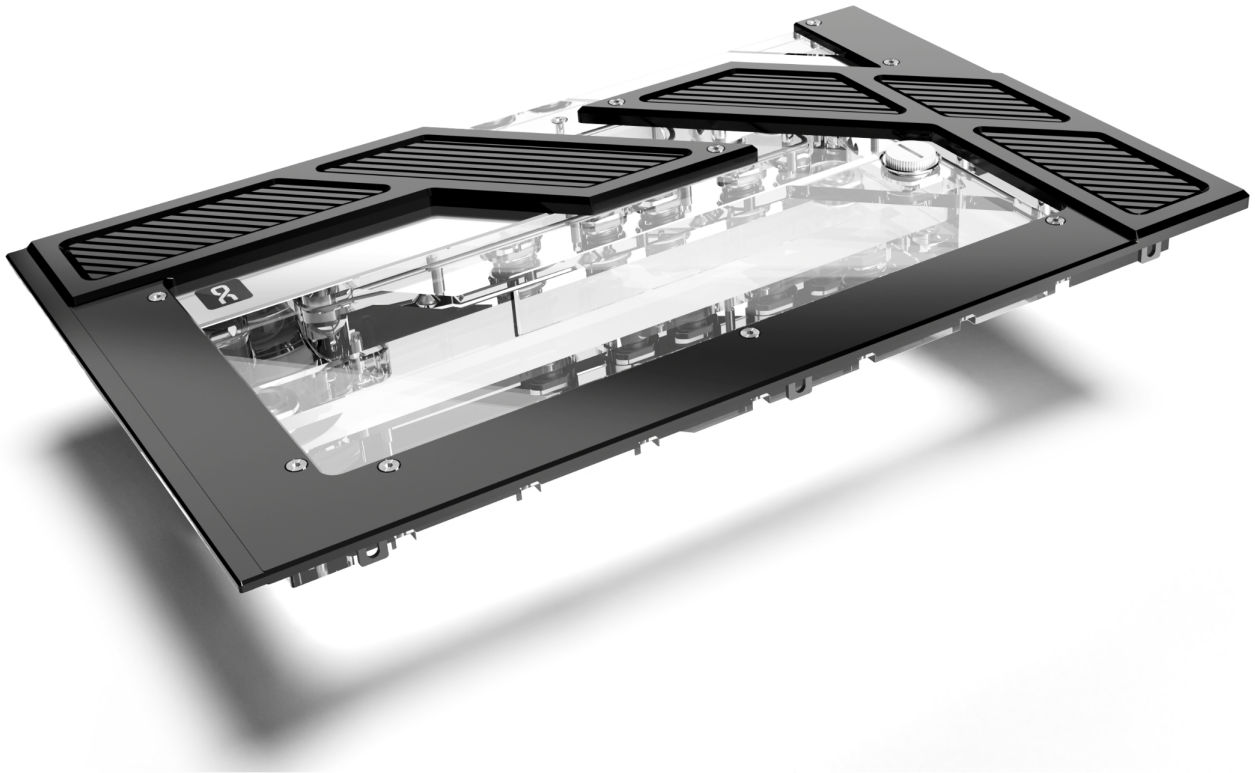
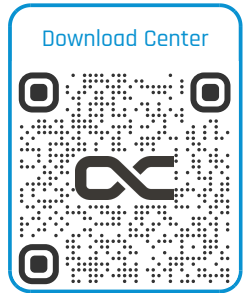


Alphacool Apex Distro Plate Y60 with D5 Apex pump

Alphacool article number: 13848



Quick Info

The Alphacool Apex Distro Plate is the visual upgrade for the Y60. It was specially designed for this case and replaces the front glass panel. A must-have for every custom water cooling system.

- Distro Plate for the Y60 case
- Brilliant digital aRGB illumination
- Chrome-plated brass connections
- VPP Apex pump included

Compatibility

- Y60 Case

Scope of delivery

1x Apex Distro Plate Y60
1x VPP-D5 Pump
2x G1/4 Plug
1x Plug tool
1x ARGB Adapter

Technical data

Dimensions (L x W x H)	344,50 x 213,50 x 87,30 mm
Material	acrylic
Volume	approx. 300ml
Pump compatibility	VPP/D5
Threads	6x G1/4" + 1x fill port and 1x drain port
Maximum working temperature	60 °C
Pressure tested	0,8 Bar
Quantity digital aRGB LEDs	11
Power digital aRGB LEDs	5V
Power connection digital aRGB LEDs	3-Pin JST + 3-Pin 5V
Weight	3000g
Color	transparent

Technical data pump

Material pump	synthetic material
Material pump cover	aluminium
Material axle	ceramics
Connections	4-Pin PWM SATA
Rotational speed	2500 - 4500 RPM
Cable lengths	4-Pin PWM - 48cm SATA - 48cm
Operating voltage	8-13V DC / 14W IP32
Starting voltage	12V DC
Maximum pumping head	4,25m
Maximum flow rate	340L/h
Maximum working temperature	60°C
Color	black

Download links

Manual	13848_Alphacool_Apex_Distro_Plate_Y60_with_D5_Apex_pump_Manual.pdf
Product pictures	13848_Alphacool_Apex_Distro_Plate_Y60_with_D5_Apex_pump_pics.zip

Packaging dimensions per unit

L x W x H	390 x 275 x 120 mm
Weight	3450 g

Other data

Certificates	CE, FC, RoHS
EAN	4250197138482
Customs code	84733080000
Guarantee	3 years

Article text

The Alphacool Apex Distro Plate is the visual upgrade for the Y60. It was specially designed for this case and replaces the front glass panel. A must-have for every custom water cooling system.

Apex Design

The Apex product line from Alphacool represents the highest level of perfection. First-class materials and innovative technologies guarantee a unique premium product. A core element is the chrome-plated brass G1/4" connections. In this way, Alphacool avoids the problem of possible leaks due to cracking caused by screwing the connections directly into the acrylic. The connections are in two parts, fitted with an O-ring and counter each other when installed in the acrylic.

High-quality choice of materials & brilliant lighting

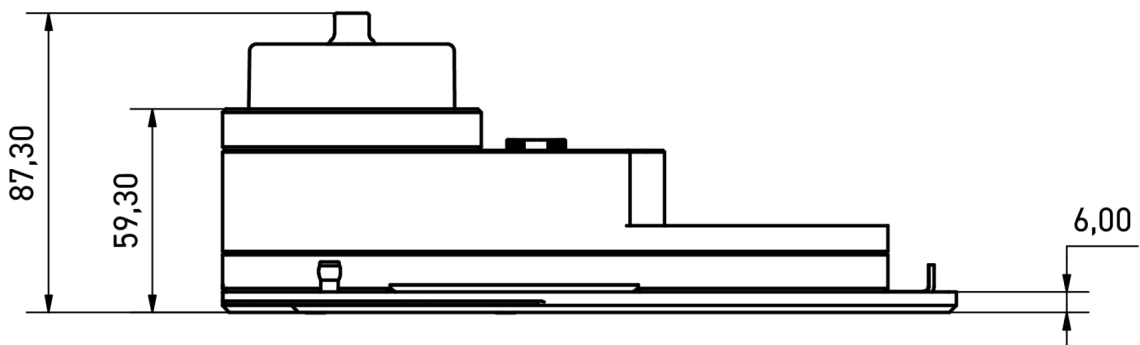
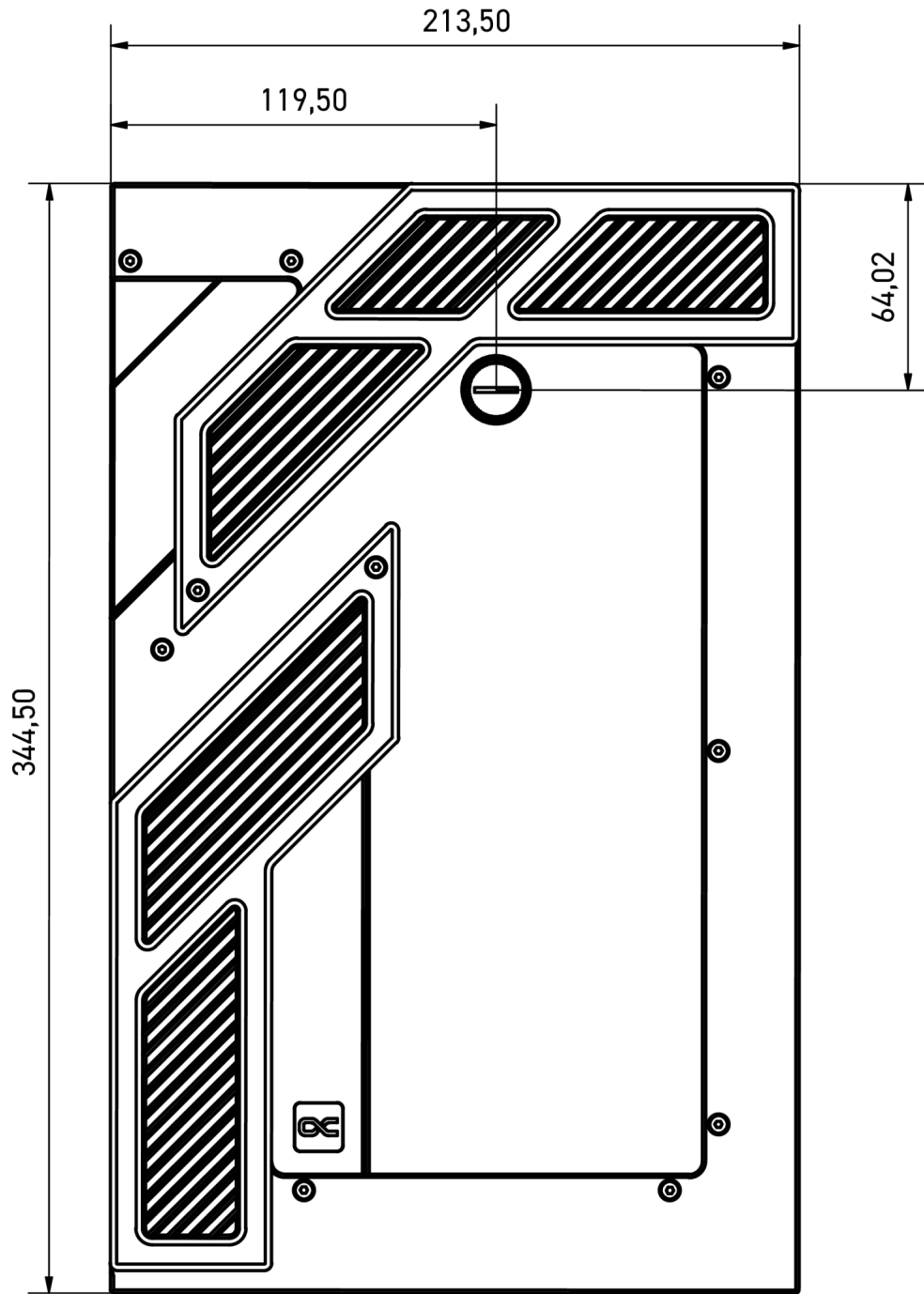
Alphacool's Apex Distro Plate is made from high-quality acrylic glass. This allows a clear view of the coolant and enables brilliant illumination thanks to the built-in digitally addressable aRGB lighting. The lighting can be controlled via a digital aRGB header on the mainboard or optionally via Alphacool's Aurora Eiscontrol aRGB controller (article no.: 15360).

Easy installation

The Alphacool Apex Distro Plate Y60 replaces the front glass panel of the Y60 housing and is easy to install. It is mounted in place of the glass panel and securely fastened using the original screws. After installation, the distro plate is connected to the water cooling loop.

Note: The Apex Distro Plate Y60 is only compatible with the Y60 housing.

Attention: It is not possible to mount the Distro Plate if a 140 mm or 280 mm radiator is attached to the side.



General tolerance: $\pm 0,25\text{mm}$
Dimension in millimeter