



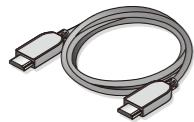
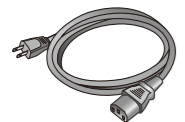
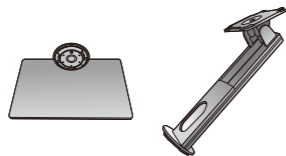
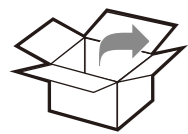
LCD Monitor Quick Start Guide

DesignVue Designer Monitor | PD Series

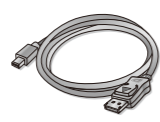


DN:PD250-EQ-V0

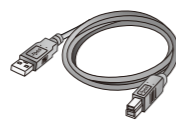
© 2020 BenQ Corporation. All rights reserved. Rights of modification reserved.



HDMI



DP to mini DP



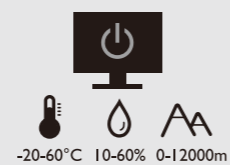
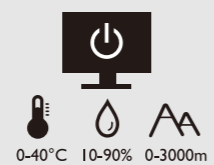
USB



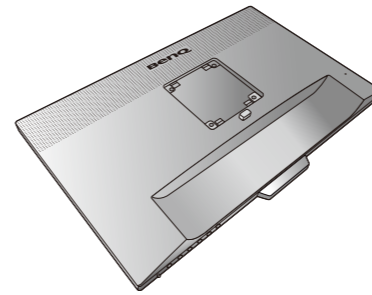
DP (Optional)



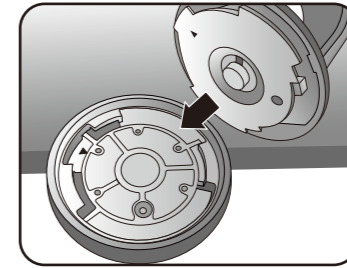
Audio (Optional)



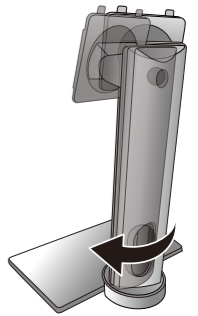
1



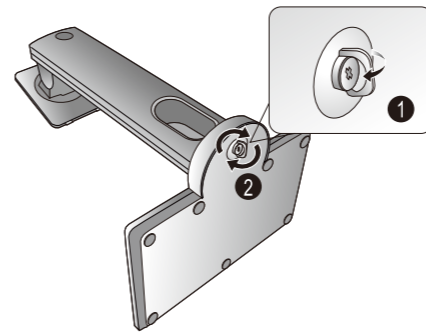
2



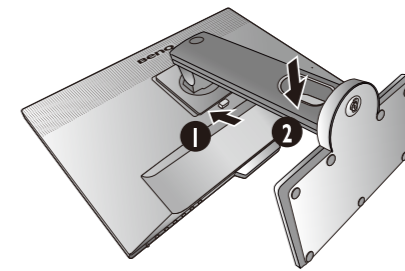
3



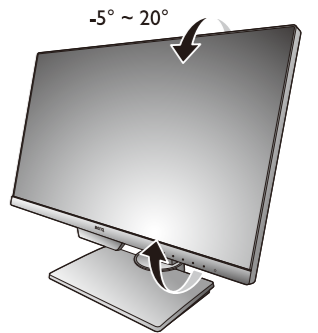
4



5



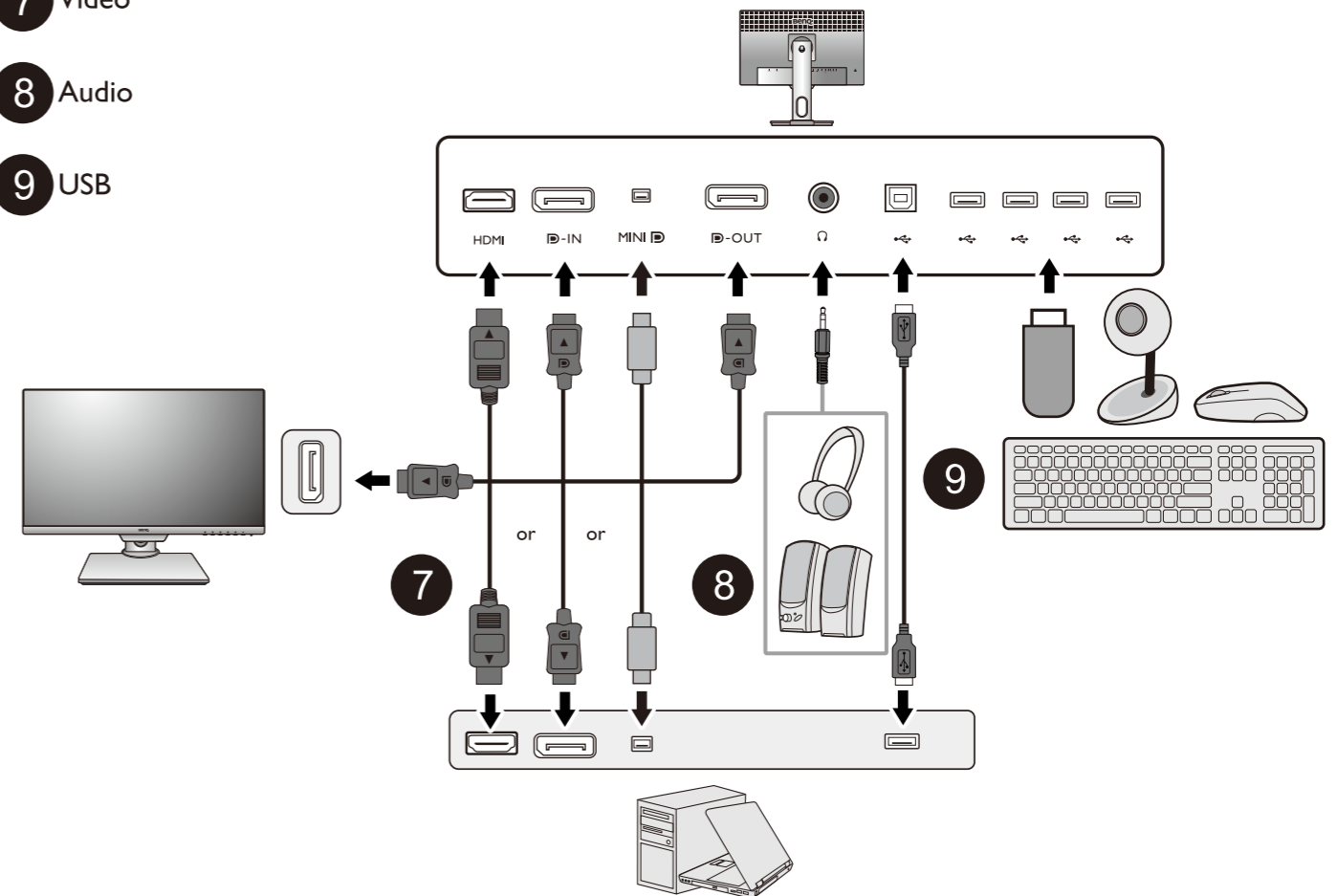
6



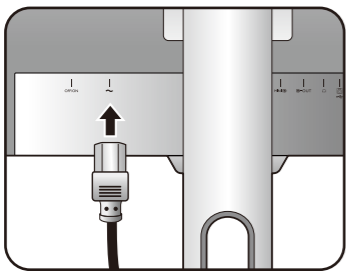
7 Video

8 Audio

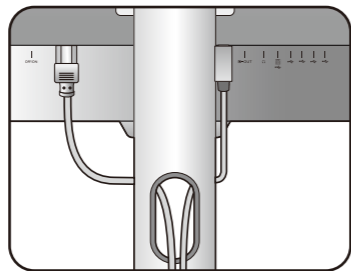
9 USB



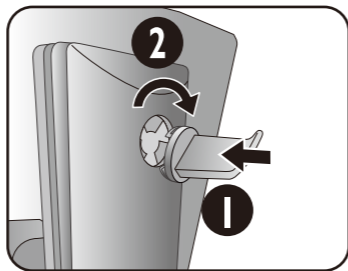
10



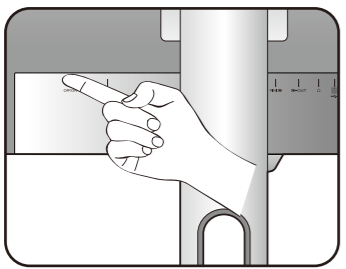
11



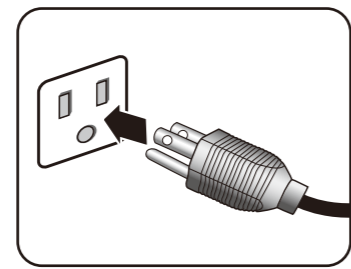
12



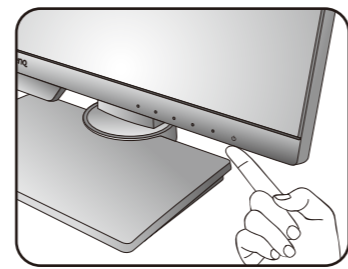
13



14

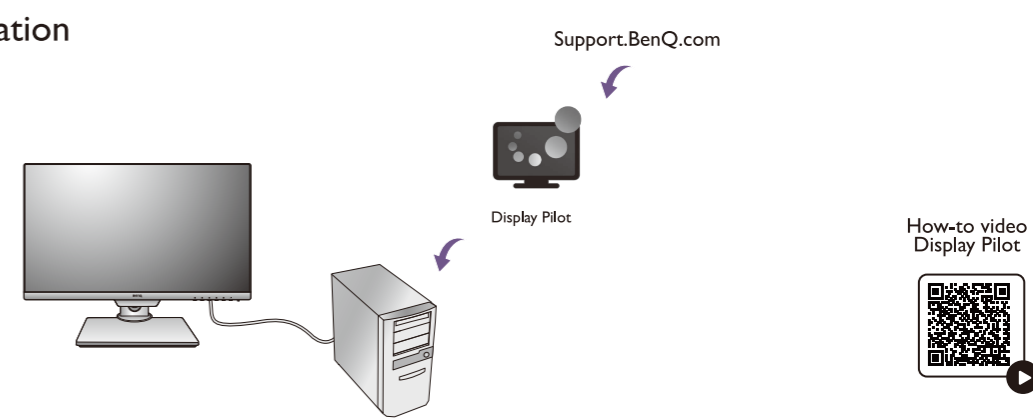


15

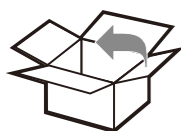
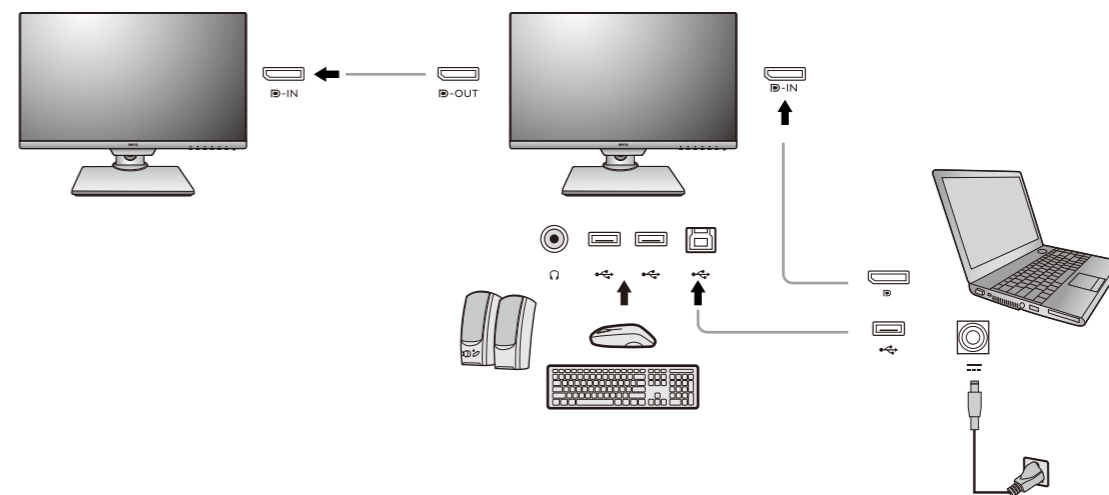


Software installation

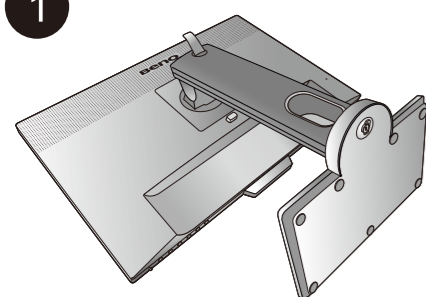
Software: Display Pilot



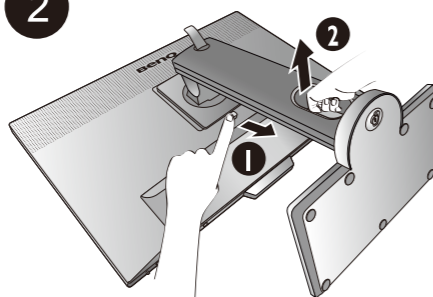
Connecting multiple monitors via MST (Multi-Stream Transport)



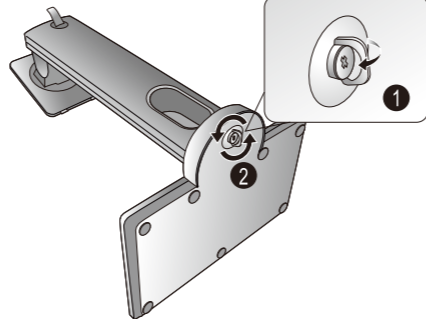
1



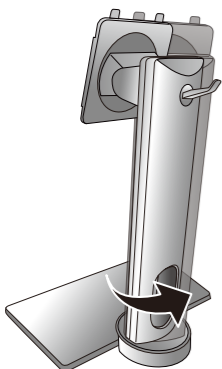
2



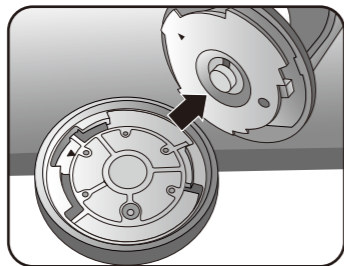
3



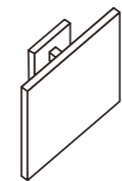
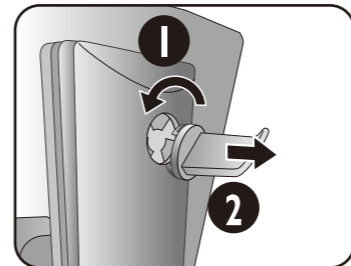
4



5



6

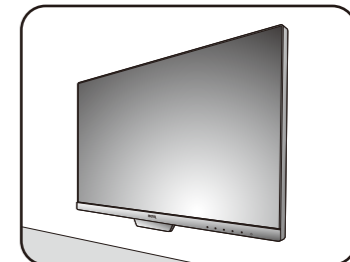


1

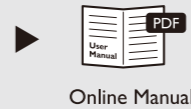


M4 x 10 mm

2



Support.BenQ.com



Online Manual



Product Support



Software Download

CAD / CAM Mode



Animation Mode

