

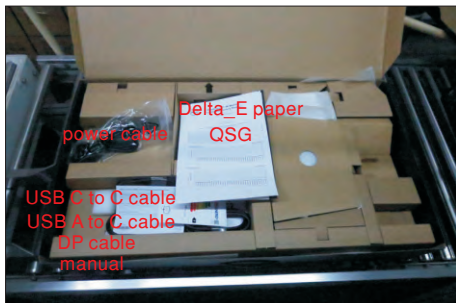
1. Disassembly Procedures:

S1 Open the carton with a proper tool.



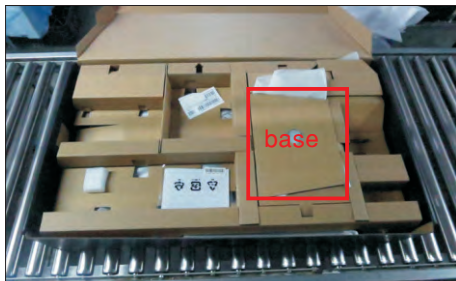
Take out all accessories including label(optional), QSG, Delta-E paper, DP cable, USB C to C cable(Type-C cable), USB A to C cable(USB cable), power cable, manual from the carton. (Note: It depends on whether users returning the accessories)

S2



S3

Take out the paper top with base from the carton, then take out the monitor and stand from the carton.



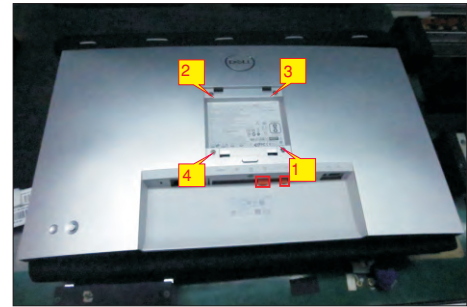
S4

Take out the monitor from EPE-bag and put the LCD monitor on a protective cushion.



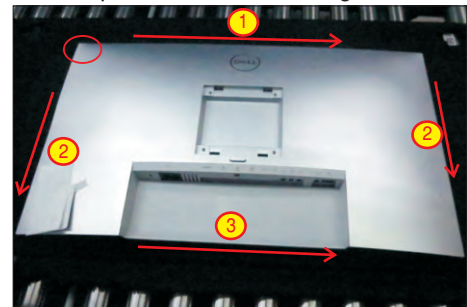
S5

Use a Philips-head screwdriver to remove 4pcs screws for unlocking mechanisms. Remove DP caps. (No.1~4 screw size=M4x11; Torque=11±1kgfxcm)



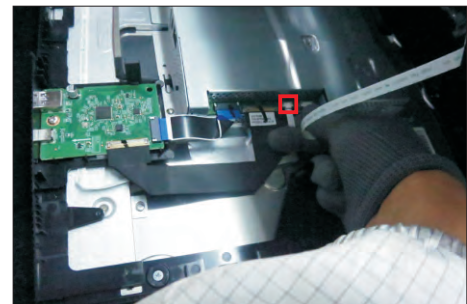
Tear off the screen protector, then wedge fingers between rear cover and the middle bezel on the corners of the top side of the monitor to release the rear cover, then use one hand to press the middle bezel, the other hand to pull up the rear cover in order of arrow preference for unlocking the rear cover.

S6



Lift the rear cover up carefully. Disconnect the joystick key cable from the connector of the interface board, and then remove the rear cover and put it aside for later disassembling.

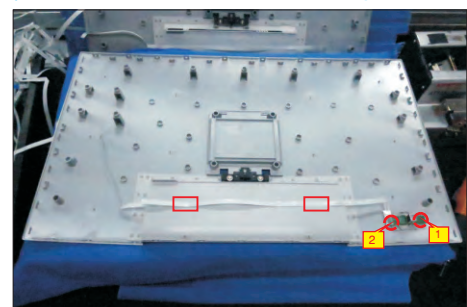
S7

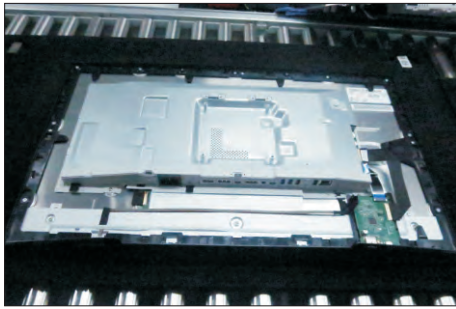


Use a Philips-head screwdriver to remove 2pcs screw for unlocking the key board, then tear off the tapes and release the key board.

S8

(No.1~2 screw size=M2x2.4, Torque=0.8~1kgfxcm)

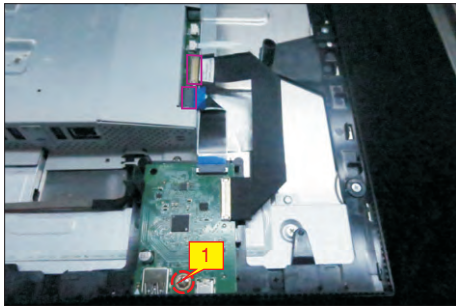




S9

Use a Philips-head screwdriver to release one screw for unlocking the USB board, and disconnect the two cables, then release the USB board from the hooks of the middle bezel.

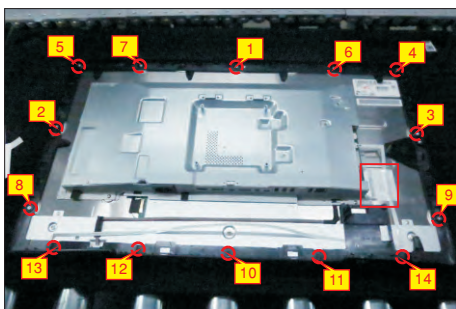
(No.1 screw size=M3x6, Torque=4±0.5kgfxcM)



S10

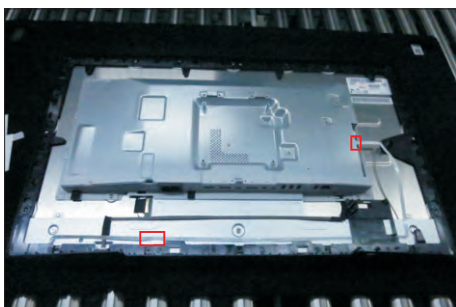
Use a Philips-head screwdriver to remove 14(9+5)pcs screws for locking the middle bezel with the panel, then tear off 1pcs aluminum foil for releasing the LED cable.

(No.1~9 screw size=M3x5, Torque=5±0.5kgfxcM;
No.10~14 screw size=M3x4.5, Torque=5±0.5kgfxcM)



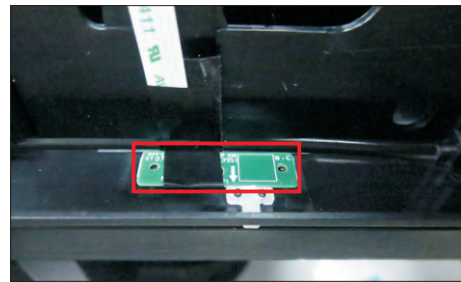
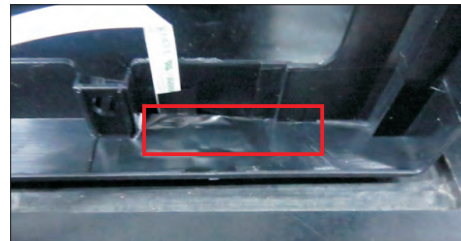
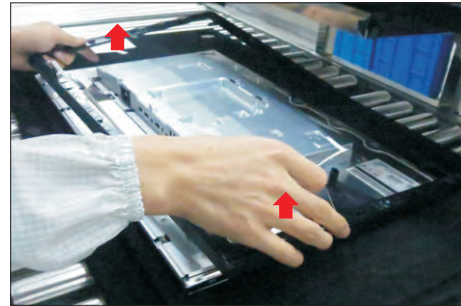
S11

Disconnect the LED cable from the connector of the interface board, and then tear off the tapes on the back of the bezel.



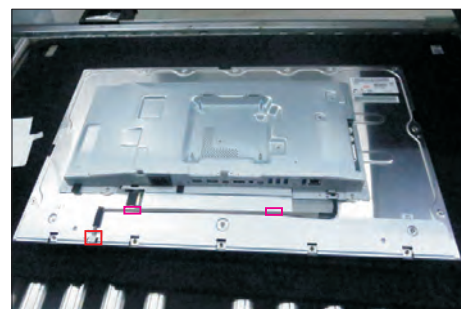
S12

Lift up and take away the middle bezel, and put it on a fixture, and then tear off the mylar tape, then release the LED board from the hooks of the middle bezel.



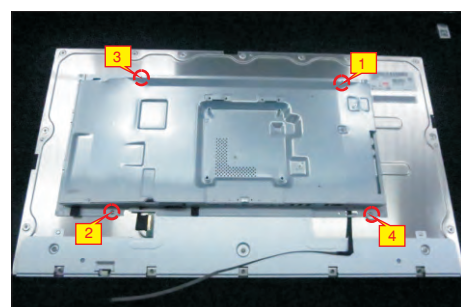
S13

Disconnect the panel lamp cables away from the two connector of the panel, and then release the lamp cable by tearing off the tapes.



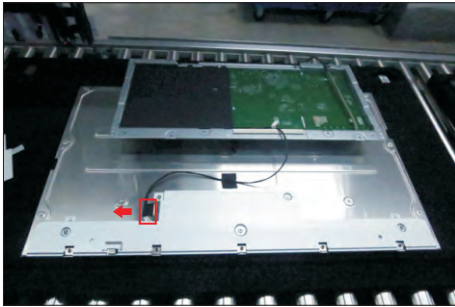
S14

Use a Philips-head screwdriver to remove 4pcs screws for unlocking the bracket with the panel.
(No.1~4 Screw size= M3x5, Torque=5±0.5kgfxcM)



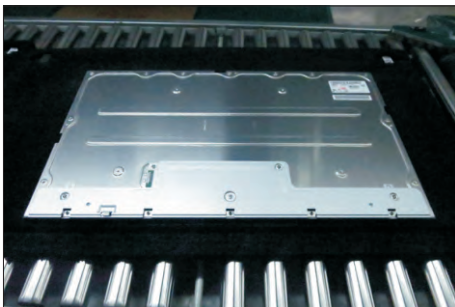
S15

Move up the bracket, then push the earing-lock and disconnect the eDP cable away from the connector of the panel module.



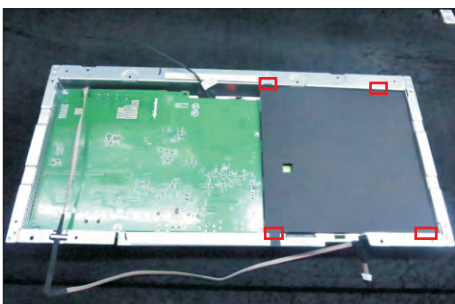
S16

Take away the bracket chassis module and then put the bracket chassis module on a protective cushion.



S17

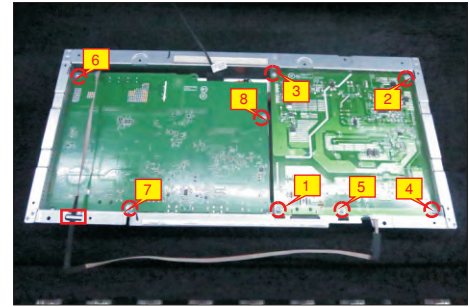
Remove the Mylar tape from the hooks of the bracket.



S18

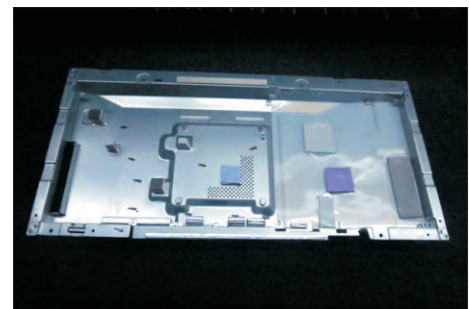
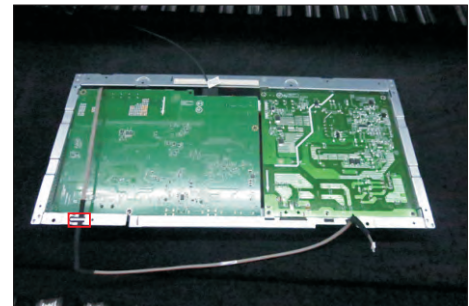
Use a Philips-head screwdriver to remove 8pcs screws for interface board and power board from the bracket.

(No.1 screw size=M4x8, Torque=7±1kgfxcM;
No.2~8 screw size=M3x7.5, Torque=7±1kgfxcM)



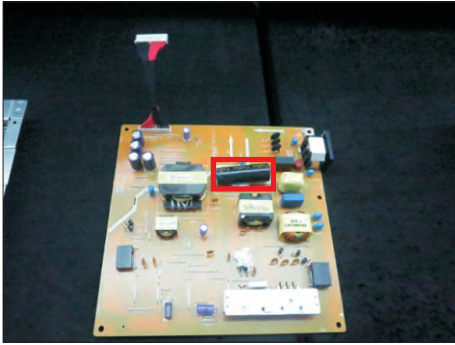
S19

Release the panel lamp cable from the hook of the bracket. Remove the power board and interface board from the bracket chassis module carefully, and then disconnect all of the cables.

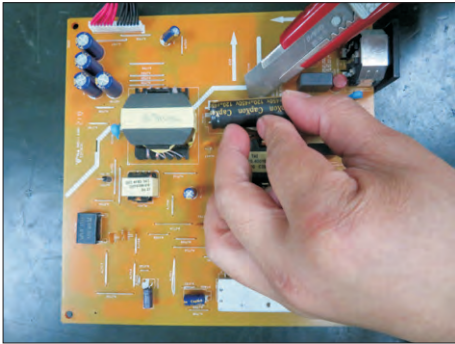


S20

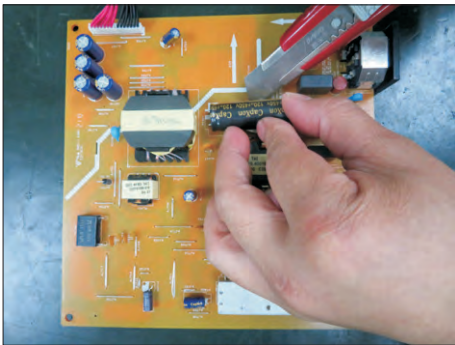
Remove electrolyte capacitors (red mark) from printed circuit boards.



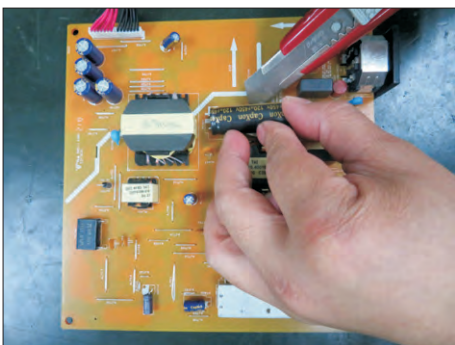
S20-1 Cut the glue between bulk cap. and PCB with a knife.



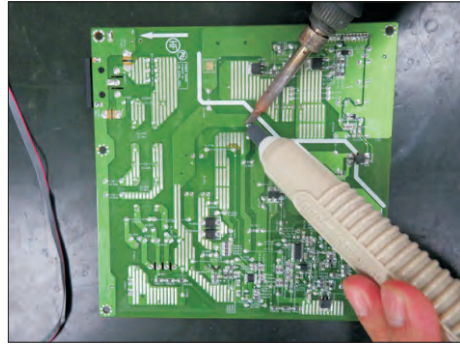
S20-2 Ensure cutting path within the glue, don't touch bulk cap. or PCB.



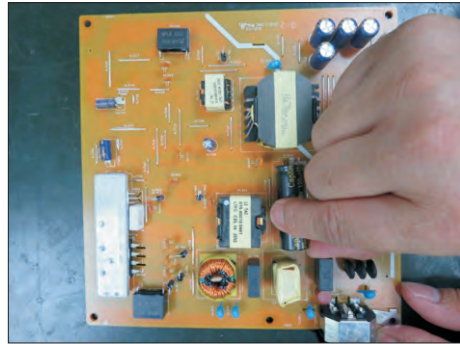
S20-3 Cut into the bottom of bulk cap. and pullit up carefully.



S20-4 Take out bulk cap. pin solder with soldering iron and absorber.



S20-5 Lift the bulk cap. up and away from the PCB.



2. Product material information

The following substances, preparations, or components should be disposed of or recovered separately from other WEEE in compliance with Article 4 of EU Council Directive 75/442/EEC.

| | |
|---|---|
| Capacitors / condensers (containing PCB/PCT) | No used |
| Mercury containing components | No used |
| Batteries | No used |
| Printed circuit boards (with a surface greater than 10 square cm) | Product has printed circuit boards (with a surface greater than 10 square cm) |
| Component contain toner, ink and liquids | No used |
| Plastic containing BFR | No used |
| Component and waste contain asbestos | No used |
| CRT | No used |
| Component contain CFC, HCFC, HFC and HC | No used |
| Gas discharge lamps | No used |
| LCD display > 100 cm ² | Product has an LCD greater than 100 cm ² |
| External electric cable | Product has external cables |
| Component contain refractory ceramic fibers | No used |
| Component contain radio-active substances | No used |
| Electrolyte capacitors (height > 25mm, diameter > 25mm) | Product has electrolyte capacitors (height > 25mm, diameter > 25mm) |

3. Tools Required

List the type and size of the tools that would typically can be used to disassemble the product to a point where components and materials requiring selective treatment can be removed.

Tool Description:

- Screwdriver (Phillip head) #1
- Screwdriver (Phillip head) #2
- Penknife
- Soldering iron and absorber