

SCANSONIC

BT200



NFC   **Bluetooth®**

UK User Manual
DK Brugervejledning
DE Bedienungsanleitung
FR Guide d'instructions
IT Manuale di istruzioni
NL Gebruikshanleiding
ES Manual de instrucciones

PLEASE READ THIS GUIDE CAREFULLY BEFORE USE

SAFETY INSTRUCTIONS:

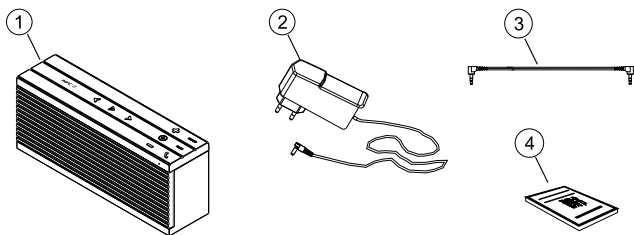
To ensure your safety and enjoyment, read and follow the safety instructions and use in the directed manner. Keep this manual for future reference.

WARNING:

To prevent any fire or electrical hazards, do not remove or disassemble any parts from this unit. Please ensure that you use a qualified technician to service it.

- Do not expose the unit to rain, water or moisture
- Do not place liquid on or close to unit
- Do not place unit on or near an open fire such as candles or light
- Keep away from heat and dust
- Place unit on a stable and level platform
- Do not place any items on top of unit
- Do not use excessive force when pushing the unit buttons
- Do not attempt to pull the power cord from a distance to shut the power
- The unit with Lithium Battery in please don't burn, bite, keep away from Children and dispose in appointed place for battery
- Secure all cords and connections and do not use pinched or defective one
- Unplug the power cord if the unit is left unused for extended periods
- Clean with a damp cloth only
- Operating temperature 0°C-55°C (32°F-131°F)
- Bluetooth device can't be found: probably, the Speaker has been connected by other Bluetooth device. Press Pair button to search it again. If you still cannot find the speaker, please Turn Off the speaker for 5 seconds then turn it on.
- Bluetooth signal intermittently: the effective distance between speaker and Device is 10M, the signal will be intermittent if the distance more than 10M.
- If there are more than 1 Speaker are switch on, the Bluetooth device will find more than 1 speaker, If you want to connect one of them please turn off the others
- If your Bluetooth device on searching and find many other Bluetooth device, please wait for the searching finished and select Speaker to pair.
- Use only power supplies listed in the user instructions.

PACKAGE CONTENTS



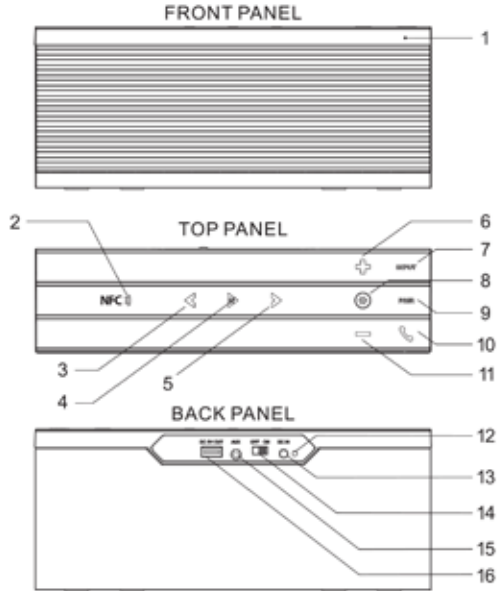
1. BT200 machine

2. Power adapter

3. Audio cable

4. User manual

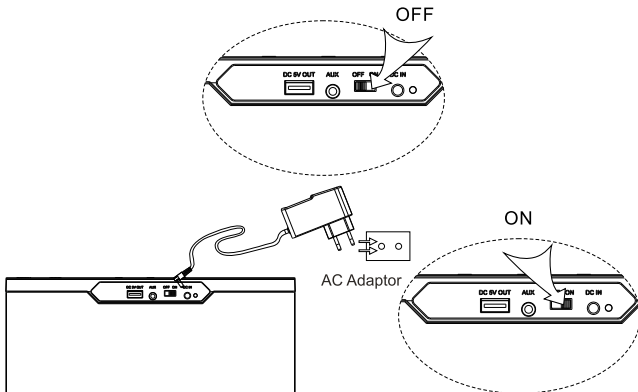
1. LED indicator
2. NFC
3. Preview
4. Play/pause
5. Next
6. Volume+
7. Input
8. Microphone
9. Pair
10. Handfree phone
11. Volume-
12. Charging indicator
13. DC in
14. Switch
15. AUX
16. Charging out port (DC 5V 1A)



BRIEF OPERATION INTRODUCTION

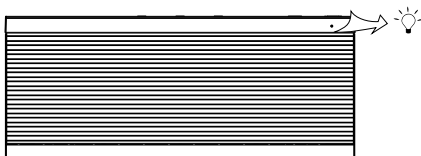
CONNECTION

Switch BT200 off, and connect it to AC power; or use the inserted battery. After that, switch it on



POWER-ON OPERATION:

After switching BT200 on, the indicate light on the front panel is on, and the voice prompt "Power ON" and BT200 is defaulted as the Bluetooth channel; then starts to search the device that connected last time. If the searching is successful, BT200 will connect automatically with the device, and voices *prompt "Du ..."*. BT200 will play the music through the device. If the searching is failed, BT200 will be in the status of being searched by other devices after 30 seconds.



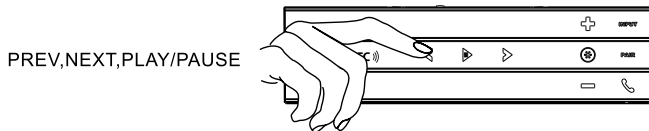
CONNECTING TO THE BLUETOOTH DEVICE:

Press "Pair" on the top of BT200, the indicate light is on, and voice prompt "pair" Search and connect (BT200) with your Bluetooth device. The voice Prompt "pairing completed" then connected and voice prompt "DU ...". Then you can play music from your Bluetooth device.



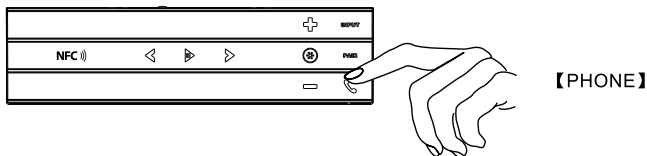
MUSIC-PLAYLNG OPERATION:

When BT200 has successfully connected to the Bluetooth device properly, you can control the music-playing of the mobiles through touching the PRE, NEXT, PLAY/PAUSE button on the touching panel



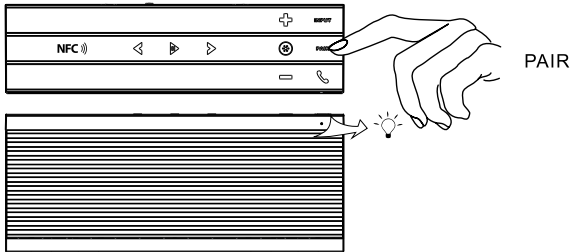
INCOMING-CALL OPERATION:

When the call comes in during playing music, answer the call by touching the button [PHONE] on the touching panel and talk facing the top panel; or dial the receiver button on the mobile and choose to use mobile to answer the call.



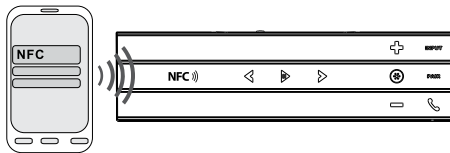
RE-PAIRING:

To touch the PAIR button on the control panel for re-pairing, meanwhile the indicator will flash, and there is voice prompt that the unit is ready to be paired. Please follow step 3 to do pairing.



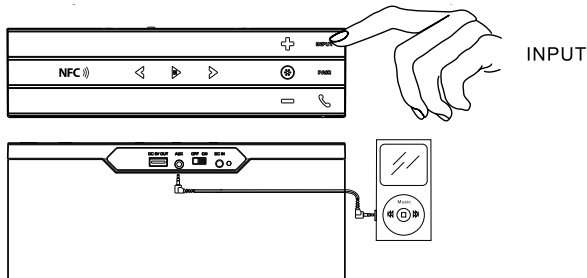
NFC:

When the speaker in the Bluetooth mode, put the NFC part mobile with NFC function (screen unlock, and Bluetooth is on) on the Nfc part on the top of BT200 for 2s to connect them, the voice prompt pairing and then [pairing completed] repeat this step can disconnect



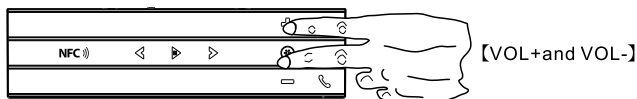
AUX INPUT PLAY:

Switch the BT200 OFF, and connect BT200 and Audio source with 3.5mm Audio Cable then Switch BT200 ON, voice prompt [Power on] touch the INPUT button on the control panel, the indicator will turn red from blue, and the unit will be connected to the AUX channel play. You can adjust Volume by touch the VOL+ and VOL- on the control panel



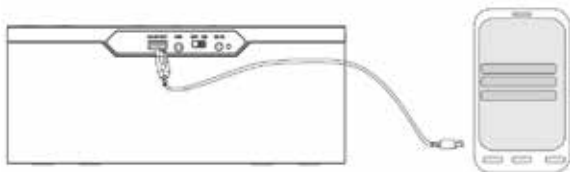
TURN OFF TOUCH PANEL:

Press and hold [VOL+and VOL-] in same time for 3 second, BT200 will Turn off the touch button, except the Phone, the indicator light will turn purple. Press and hold [VOL+and VOL-] in same time for 3 second to Turn on the touch panel.



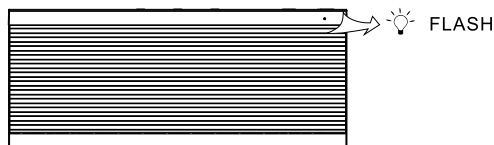
DC5V CHARGING OUTPUT:

The unit provide standard USB port charging, with DC5V 1A charging current, which can charge mobiles, MP3, etc through USB cable



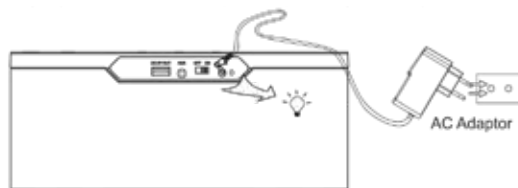
BUILT-IN BATTERY USE:

When using the built-in battery to play music, the unit will manage the battery use automatically, when the power is low, the unit will decrease the volume to ensure the sound quality and longer play time; when the power is not enough to support normal play, the indicator will flash 30 seconds and the unit will be switch to standby, please use the proper power adapter to charge the unit for normal use.



CHARGING:

The unit is with built-in battery, please use the supplied power adapter to charge it, the green indicator on the back of the unit will flash when charging. When the battery is fully-charged, the green indicator will stop flashing.



* NOTE

- The Bluetooth device can't find the speaker, the speaker may still connect with last Bluetooth device or another device are searching and connecting with speaker at same time. Now you need to operate as Step 3 to re-connect it.
- If you hear intermittent sound or no sound from speaker after connection. Please check if the distance from you and speaker are over 10M
- Don't let Opposite close to speaker when you use speaker phone function to avoid Echo
- Please use default music player with your Bluetooth device system like, iPod, Samsung player, Windows media player. As lots of third party music player does not support smooth song change function, to avoid "pu" sound.
- Please use power adaptor which provide from Lanchiya to avoid damage your speaker.
- Please connect and disconnect adaptor when the switch is in OFF position 7. if your mobile doesn't support mobile ring transfer, you can only hear the BT200 Built in ring voice " incoming call", when calling come in.
- Not work with NFC: please make sure the mobile has NFC function and turn it on.
- Your phone cases may block the NFC communication

SCANSONIC

Made in China
Imported by Dantax Radio A/S
Blansbjergvej 15 · 9490 Pandrup · Denmark
www.scansonic.dk

