

PERFORMANCE

Processor

AMD Ryzen™ 7 7840HS (8C / 16T, 3.8 / 5.1GHz, 8MB L2 / 16MB L3)

Graphics

NVIDIA® GeForce RTX™ 4060 8GB GDDR6, Boost Clock 2370MHz, TGP 115W

Chipset

AMD SoC Platform

Memory

2x 8GB SO-DIMM DDR5-5600

Memory Slots

Two DDR5 SO-DIMM slots, dual-channel capable

Max Memory

Up to 16GB DDR5-5600 offering

Storage

1TB SSD M.2 2242 PCIe® 4.0x4 NVMe®

Storage Support

Up to two drives, 2x M.2 SSD

- M.2 2242 SSD up to 1TB

Storage Slot

Two M.2 slots

- One M.2 2242 PCIe 4.0 x4 slot
- One M.2 2280 PCIe 4.0 x4 slot

Card Reader

None

Optical

None

Audio Chip

High Definition (HD) Audio, Realtek® ALC3287 codec

Speakers

Stereo speakers, 2W x2, optimized with Nahimic Gaming Audio

Camera

FHD 1080p with E-shutter

Microphone

2x, Array

Battery

Integrated 80Wh

Max Battery Life

Models with 80Wh battery:

MobileMark® 2018: 6.5 hr

Local video (1080p) playback@150nits: 9.3 hr

Power Adapter

230W Slim Tip (3-pin)

Special Features

AI Chip: LA1

DESIGN

Display

16" WQXGA (2560x1600) IPS 350nits Anti-glare, 100% sRGB, 165Hz, G-SYNC®, FreeSync™

Touchscreen

None

Color Calibration

None

Keyboard

White Backlit, German

Case Color

Storm Grey

Surface Treatment

Painting

Case Material

PC-ABS (Top), PC-ABS (Bottom)

Dimensions (WxDxH)

359.6 x 277.6 x 21-25.9 mm (14.16 x 10.93 x 0.83-1.02 inches)

Weight

Starting at 2.6 kg (5.73 lbs)

SOFTWARE

Operating System

Windows® 11 Home, German

Bundled Software

Office Trial

CONNECTIVITY

Ethernet

100/1000M (RJ-45)

WLAN + Bluetooth®

Wi-Fi® 6, 11ax 2x2 + BT5.1

Standard Ports

- 1x USB 2.0
- 2x USB 3.2 Gen 2
- 1x USB-C® 3.2 Gen 2 (support data transfer, Power Delivery 140W and DisplayPort™ 1.4)
- 1x HDMI® 2.1, up to 8K/60Hz
- 1x Ethernet (RJ-45)
- 1x Headphone / microphone combo jack (3.5mm)
- 1x Power connector

SECURITY & PRIVACY

Security Chip

Firmware TPM 2.0 Enabled

Fingerprint Reader

None

Other Security

E-shutter

MANAGEABILITY

SERVICE

Base Warranty

2-year, Courier or Carry-in

Included Upgrade

<= 3 Months Premium Care (5WS1E19595)

ACCESSORIES

Bundled Accessories

None

CERTIFICATIONS

Green Certifications

- ErP Lot 6
- ErP Lot 26
- RoHS compliant

Other Certifications

TÜV Rheinland® Low Blue Light (Hardware Solution)

MODEL

TopSeller : Yes Announce Date : 2023-06-08

EAN / UPC / JAN : 197528866581 End of Support : 2029-06-15



AMD

- Lenovo reserves the right to change specifications or other product information without notice.
- Product image on this page is a sample, it may not match the real color of this model
- Battery life is an estimated maximum. Actual battery life may vary based on many factors, including screen brightness, active applications, features, power management settings, battery age and conditioning, and other customer preferences

Premium Care - Advanced Support from Real People. Real Fast.



REAL PERSON

Choose how you want to reach us - through the phone, chat or email - our expert technicians will take care of you.



REAL FAST

Highly trained technicians will provide you real-time solutions, whatever the issue, on your first contact. If needed, our team will schedule an onsite visit for the next business day.



HASSLE FREE

'Getting started' and 'how-to' assistance for hardware and software. Easy solutions that are simple to reach - that's how Premium Care delivers you the ideal support experience.



PC HEALTH CHECK

Free annual PC Health Check that allows our experts to spot issues before you do so they can resolve them quickly and help you avoid PC problems.

Accidental Damage Protection - Protection of your PC from the unexpected.

Experience shows that a significant portion of devices may be damaged (and not covered under warranty) in the first three years. Lenovo's Accidental Damage Protection service covers accidents beyond the system warranty such as drops, spills, bumps and even electrical surges. Make sure your new device has maximum protection, avoid unplanned costs and get peace of mind.

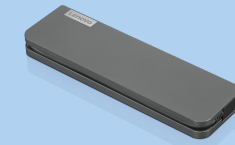
Base Warranty – Included with the systems you purchase, default 1- or 3-year coverage window.

Warranty Extensions & Upgrades – Service and protection that's right for your circumstances.

- Pick Up & Return Courier
- Onsite Support
- Technician Installed Customer
- Replaceable Unit Service
- International Warranty Upgrade

Lenovo may not offer the products, services or features discussed in this document in all regions. Lenovo may withdraw an offering at any time. Consult your local representative for information on offerings available in your area. Lenovo reserves the right to change specifications or other product information without notice. Lenovo is not responsible for photographic or typographical errors. Lenovo provides this publication "as is" without warranty of any kind, either express or implied, including the implied warranties of merchantability or fitness for a particular purpose.

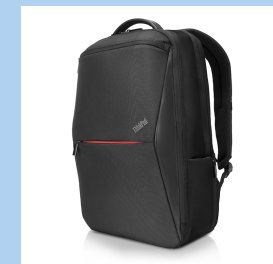
Recommended Accessories



Lenovo USB-C Mini Dock_US

40AU0065US

Expand Your Potential with An Universal Mini Dock; Lenovo understands that modern business depends on a wide variety of PC's and even brands to meet their business needs. To make this easier Lenovo USB-C Mini dock is ...



ThinkPad Professional 15.6-inch Backpack

4X40Q26383

The Lenovo ThinkPad Professional Backpack is a streamlined yet versatile backpack for the on-the-go professional. This clean, modern design carries, protects, and organizes your mobile office, while premium, lightweig...

For a full list of accessories and services, please visit:
<https://smartfind.Lenovo.com>

Lenovo

PSREF
Product Specifications
Reference