



NaviTEK NT

Copper and Fibre Network Troubleshooter

NaviTEK NT

Network Troubleshooter

The NaviTEK NT is a network tester for troubleshooting and maintenance of active and passive copper and fibre networks. Incorporating an improved graphical interface NaviTEK NT allows network technicians to pinpoint and solve network connectivity issues faster than ever before. Subsequently, tests can be saved as pdf reports and shared with colleagues and clients using the free IDEAL AnyWare™ app.

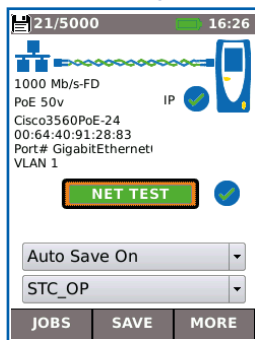


Addressing the needs of today's network technicians

Today, network technicians have a broad selection of software troubleshooting tools at their disposal and whilst useful in certain situations and environments they do have limitations. NaviTEK NT on the other hand offers a comprehensive suite of test and troubleshooting functionality only found on dedicated hand-held testers:-

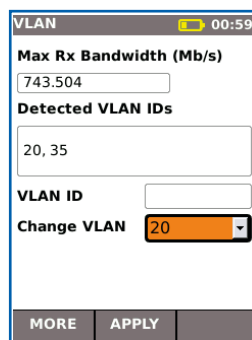
- Copper and fibre test interfaces
- Fast detection of link and IP information including duplex, speed, port ID, VLAN, DNS, DHCP, Gateway status and IP address
- Detects services such as ISDN, POTS and PoE
- Accurate wire mapping including length measurement and distance to fault
- Rugged, compact design permits use in confined spaces
- Not susceptible to virus and malware attack

Port & network summary info



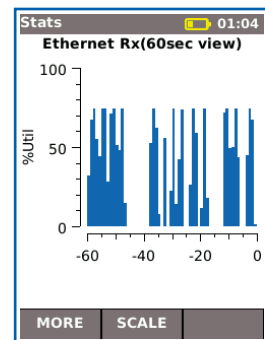
Press the Autotest button to display summary information and allow for detailed inspection of network parameters.

VLAN detection & operation



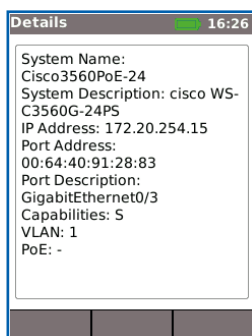
Automatic detection of VLAN ID's allows the user to configure NaviTEK NT for operation on a VLAN.

Ethernet utilisation



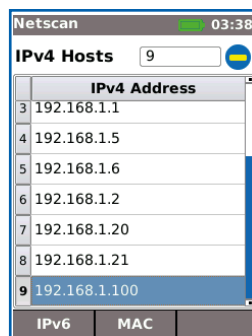
Real time display of broadcast network traffic shown as a percentage of port speed for the previous 60 minutes.

CDP/LLDP/EDP port information



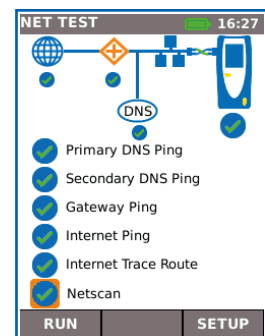
Show port information using Cisco Discovery Protocol (CDP), Link Layer Discovery Protocol (LLDP) and Extreme Discovery Protocol (EDP).

Netscan



Display list of IP and MAC addresses of every device connected to the network.

Network Probe



View network illustration to verify test results of each network component.

Send test reports from anywhere using the free app



IDEAL
AnyWARE



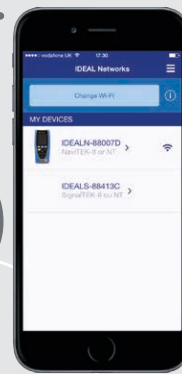
Step 1 Test

- Create job folder
- Enter job site information
- Perform autotest on copper/fibre cabling and copper/fibre networks



Step 2 Connect

- Activate NaviTEK NT wireless hotspot
- Connect your mobile phone or tablet with the IDEAL AnyWARE App
- Transfer test reports to your mobile device
- View test reports



Step 3 Send

- Select reports (PDF or CSV) to send
- Select preferred transfer method – email, ftp, cloud storage etc.
- Send file
- Alternatively save test reports to USB key

Download the FREE App today



NavITEK NT

Performs tests for copper cabling and networks, including:

- Display network configuration - IPv4 / IPv6 compatible
- Advanced wiremap for miswires, split pairs, opens and shorts
- Distance to opens and shorts (TDR)
- PoE/PoE+ detection
- Tone generator for cable tracing
- Autotest button performs Ping and Traceroute test (network mode)
- Hub blink for port identification
- DHCP client
- Switch detection - 10/100/1000 Mb/s
- User-exchangeable RJ45 inserts
- Support for up to 12 wiremap remotes
- Backlit colour screen

NavITEK NT Plus

All the features of NavITEK NT as well as:

- Autotest button performs a suite of network tests: Internet connectivity (Ping, DNS, Gateway, Traceroute) and NetScan
- Network Probe (NET TEST) provides detailed network information of each device
- Port identification using EDP/CDP/LLDP protocols
- VLAN detection and support
- Network scan (IP and MAC addresses of devices)
- PoE/PoE+ load test
- Traffic utilisation bar graph
- Internal memory for 5000 test reports
- Generate test reports (PDF or CSV)
- Send test reports from your mobile device using the free IDEAL AnyWARE App

NavITEK NT Pro

All of the features of NavITEK NT Plus as well as:

- Fibre optic cable interface
- Logon using the 802.1x protocol
- Optical power level and pass/fail indication with supported SFP
- Loopback mode for transmission testing on both copper and fibre interfaces

NavITEK NT

Network Troubleshooter

Test Reporting

NavITEK NT automatically generates test reports in PDF or CSV format.

The summary page of each report can be customised to include logo, company and operator details. Choose between 3 different reports that can show either passed, failed or all test reports in each report:

- Summary
- Brief
- Full (see example on the right side)



Ordering Information

Part No.	Kit Contents
R153001	NavITEK NT - Network Troubleshooter. 1 x NavITEK NT test unit, 1 x Remote unit No. 1, 4 x AA dry cell batteries (non-rechargeable), 2 x Patch cables - 30cm, Cat. 5e STP, 1 x Quick reference guide, 1 x Carry case
R151003	NavITEK NT Plus- Network Troubleshooter. 1 x NavITEK NT Plus test unit, 1 x Remote unit No. 1, 1 x Rechargeable Power Module, 1 x PSU EU/UK/US adaptors, 2 x Patch cables - 30cm, Cat. 5e STP, 1 x USB Wi-Fi adapter, 1 x Quick reference guide, 1 x Carry case
R151004	NavITEK NT Pro - Network Troubleshooter. 1 x NavITEK NT Pro test unit, 1 x Remote unit No. 1, 1 x Rechargeable Power Module, 1 x PSU EU/UK/US adaptors, 2 x Patch cables - 30cm, Cat. 5e STP, 1 x USB Wi-Fi adapter, 1 x Quick reference guide, 1 x Carry case

NavITEK-NT Test Report

Job Name: Building_5
Date Tested: October 21 2015
Time Tested: 13:50
Info 1: ST_Info1_Url
Info 2: POE1_7
Info 3: ROKV_24
Info 4: RAKX_3
Info 5: WLAN_ACCESS
Info 6: CHANMS_300M1
Info 7: FLOOR_23
Info 8: THAMES_ESTATE

Owner: Tester
Company: IDEAL NETWORKS
Address 1: 33 CHENINGHURCH RD
Address 2: OXFORD ROAD
City:
State:
Zip:
Country: UK
Phone1: 0044149486472
Phone2:

System Name: Switch 2
System Description: C3347E1's Profile: 48-port Gigabit E
IP Address: 172.20.1.4
Port Address: 88-363-3-6-3-6-3-6
Port Description: g25
Capabilities: S
VLAN:
PoE Power (W):

Tested: PASS
EIN: 005046-888070

Port	Line Rate	Duplex	Speed	IPv6
Auto	Auto	Auto	[OK]	
Auto	Auto	Full Duplex	Assigned	172.20.20.24
Auto	Auto	Full Duplex	Assigned	2001::Sub 1501::0002:136:4ff:fe8b:7d

Detected VLAN IDs

Pair	Min. Power (W)	Max. Power (W)	Voltage (V)	Current (mA)	Power (W)	Voltage (V)	Current (mA)	Power (W)
Pair 12-34								
Pair 45-78								

Primary DNS Ping

Type	Destination Address	Pauses (ms)	Length (bytes)	Tx (Packets)	Rx (Packets)	Min RTT (ms)	Avg RTT (ms)	Max RTT (ms)
Auto	172.20.1.1	1000	64	1	1	1.7	5.7	1.2

Secondary DNS Ping

Type	Destination Address	Pauses (ms)	Length (bytes)	Tx (Packets)	Rx (Packets)	Min RTT (ms)	Avg RTT (ms)	Max RTT (ms)
Auto	172.22.1.1	1000	64	1	1	1.1	5.3	5.6

Gateway Ping

Type	Destination Address	Pauses (ms)	Length (bytes)	Tx (Packets)	Rx (Packets)	Min RTT (ms)	Avg RTT (ms)	Max RTT (ms)
Auto	172.20.0.3	1000	64	1	1	1.1	5.3	6.4

Internet Ping

Type	Destination Address	Pauses (ms)	Length (bytes)	Tx (Packets)	Rx (Packets)	Min RTT (ms)	Avg RTT (ms)	Max RTT (ms)
Manual	www.google.com	64	64	1	1	4.4	5.3	6.4

Trace Route

Type	Destination Address	Max Hops (N)	Total Hops (n)	Time 1 (ms)	Time 2 (ms)	Time 3 (ms)
Auto	www.google.com	30	3	6.239	6.088	3.968

Netscan

IP Address	MAC Address	Scan Range	Max Hosts	Hosts Found
172.20.20.20	00:0c:29:49:3c:7e	172.20.20.23	256	256
172.20.20.26	54:00:17:38:74:4d	172.20.20.29	256	256
172.20.20.46	08:00:20:00:00:00	172.20.20.48	256	256
172.20.20.55	40:08:1e:02:18:44	172.20.20.54	256	256
172.20.20.50	3c:0f:39:3d:68:89	172.20.20.53	256	256
172.20.20.47	10:08:02:42:28	172.20.20.48	256	256
172.20.20.18	a0:08:1e:02:18:44	172.20.20.80	256	256
172.20.20.81	54:00:17:38:74:4d	172.20.20.83	256	256

Created: October 21 2015 22:28
IDEAL NETWORKS
Page 19 of 25

Optional Accessories

Part No.	Description
MGKSX1	1 x 850nm SX MM SFP + fibre patch cord accessories kit
MGK LX2	1 x 1310nm LX SM SFP + fibre patch cord accessories kit
MGK ZX3	1 x 1550nm ZX SM SFP + fibre patch cord accessories kit
150058	RJ-45 replacement kit - Pack of 10 replacement inserts with extraction tool

For a full list of optional accessories, please visit our website.

Basic Specifications

Max. No. of Jobs	Max. No. of Stored Test	Max. Length	Battery Life	Dimensions per handset in mm	Weight per handset
50	5000	181 m/593 ft.	5 hours	175 x 80 x 40	0.4 kg

For detailed specifications, please visit our website.



Apple and the Apple logo are trademarks of Apple Inc., registered in the U.S. and other countries. App Store is a service mark of Apple Inc.

Android is a trademark of Google Inc.

All Rights Reserved. IDEAL, IDEAL NETWORKS, IDEAL AnyWARE and the NavITEK logos are trademarks or registered trademarks of IDEAL INDUSTRIES LIMITED or IDEAL INDUSTRIES, INC.

IDEAL INDUSTRIES NETWORKS DIVISION
Unit 3, Europa Court, Europa Boulevard, Warrington, Cheshire, WA5 7TN, UK.

Tel. +44 (0)1925 444 446 | Fax. +44 (0)1925 445501
uksales@idealnwd.com

www.idealnetworks.net



A subsidiary of
IDEAL INDUSTRIES INC.



Specification subject to change without notice. E&OE

© IDEAL Networks 2015
Publications no: 151851, Rev. 1