



Welcome to a new class of high performance motherboards with the EVGA Z97 lineup. These platforms offer a return to greatness with a new GUI BIOS interface, reimagined power VRM that focuses on efficiency, and are loaded with features such as Intel(r) Gigabit LAN, Native SATA 6G/USB 3.0 and more.

Built from the ground up to give you all the essentials you need for overclocking, with a GUI BIOS that is focused on functionality, new software interface for overclocking in the O.S., ultra high quality components, robust PCI-E 3.0, and memory trace layout.

With these features and more, it is clear that the EVGA Z97 motherboards are engineered to exceed the best.

## KEY SPECS

- Supports Intel Core 4<sup>th</sup> and 5<sup>th</sup> Generation Processor family for LGA Socket 1150
- Intel® Z97 Chipset
- Enthusiast Layout Supporting 2-Way SLI® + PhysX®
- 4 DIMM Dual-Channel DDR3 2666MHz+ (Up To 32GB)
- PCI Express® 3.0 Ready
- 1 HDMI Port
- 1 DisplayPort Port
- M.2 Socket Type2 Slot
- 6 USB 2.0 Ports (four rear panel, two onboard)
- 6 USB 3.0 Ports (four rear panel, two onboard)
- 8 SATA III/6G Ports
- 1 Intel Gigabit Ethernet Port (10/100/1000)
- 8 Channel HD Audio
- ATX Form Factor

## DESIGN DETAILS

**Supported CPUs** - Intel® 4<sup>th</sup> & 5<sup>th</sup> Generation Socket 1150 Processors  
**Socket Type** - LGA1150  
**PCH** - Intel® Z97

**DIMM QTY** - 4 DIMM Slots  
**Memory Type** - DDR3 800/1066/1333/1600/2133/2400/2666MHz+  
**Memory Capacity** - 32GB

**SATA III 6.0Gb/s Ports/Controller** - 6 / Z97 PCH - 2 / Marvell 9220  
**RAID Support** - RAID 0, 1, 5, 10, JBOD

**USB 2.0 Ports/Controller** - 6 / Intel® Z97 PCH  
**USB 3.0 Ports/Controller** - 6 / Intel® Z97 PCH

**Network Speed** - 10/100/1000  
**Network Ports/Controller** - 1 / Intel® i217

**Audio** - 8 Channel  
**Audio Controller** - Realtek ALC898  
**PCI-E Slot Arrangement** - 1x16, 2x8, 1x8+2x4, 1x8+4+4+1  
**PCI-E Mechanical Slots** - 4  
**PCI-E x1 Slots** - 1

**BIOS Type** - AMI / UEFI  
**Software** - EVGA E-LEET X Tuning Utility  
**M.2 Socket Type2 Slot** - 1

**Fan Headers** - 6

### DIMENSIONS

- Width: 9.6in – 243.8mm
- Length: 12in – 304.8mm
- Form Factor: ATX

### ACCESSORIES

- EVGA Driver Installation Disc
- Rear Case I/O Panel
- Rear Case I/O Cover
- 4 SATA 6G Data Cables
- 2-way SLI Bridge
- Manual



### PRODUCT WARRANTY

This product is covered under EVGA's 3 year warranty which covers parts and labor. Further warranty extension is available upon registration within 30 days of purchase. For more details please visit [www.evga.com/warranty](http://www.evga.com/warranty)





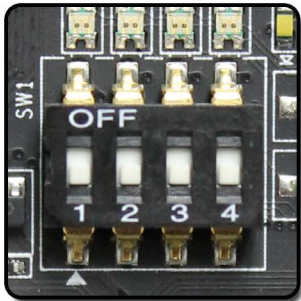
### BRAND NEW GUI BIOS INTERFACE

Focused on functionality



### PCI-E DISABLE SWITCH

Quickly and easily troubleshoot!



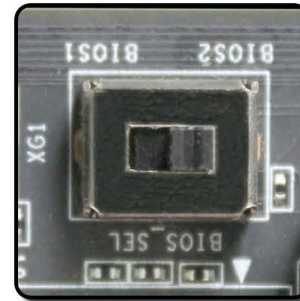
### E-LEET X TUNING UTILITY

Adjust your overclocking in 0.5.



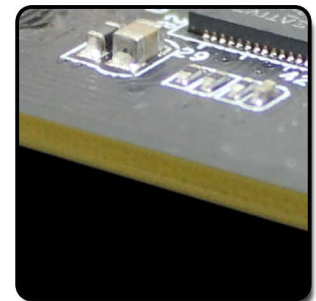
### DUAL BIOS SUPPORT

Use 2 separate profiles!



### 6 LAYER PCB

Improved overclock stability and PCB cooling



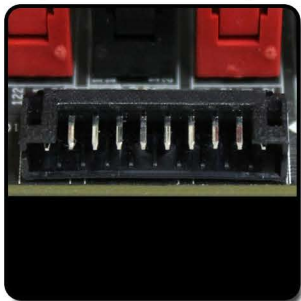
### HIGHER GOLD CONTENT

Lower inductance, better power delivery!



### EZ VOLTAGE READ POINTS

Easy read dedicated read points



### ONBOARD CPU TEMP MONITOR

Monitor CPU temps quickly & easily



### PASSIVE CHIPSET HEATSINK

No fans, lower noise, longer lifespan



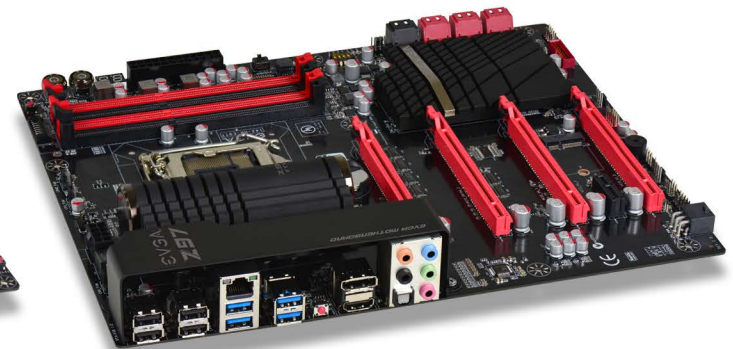
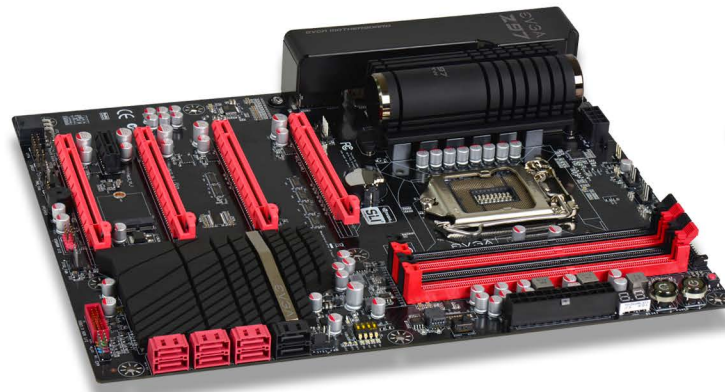
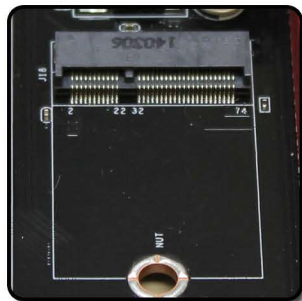
### 6 PHASE PWM

Cleanest variable power switching



### M.2 SLOT

Next generation form factor



### PRODUCT WARRANTY

This product is covered under EVGA's 3 year warranty which covers parts and labor. Further warranty extension is available upon registration within 30 days of purchase. For more details please visit [www.evga.com/warranty](http://www.evga.com/warranty)

