

REMINGTON®

Featuring
Pivot & Flex
FOIL TECHNOLOGY

F4790, F5790, F6790, F7790

Use and Care Guide



Register Your New Product Today!

By registering your new Remington® product, you will receive these important benefits:
Proof of Ownership • Product Protection • Product Registration • Special Offers
Register online at: www.RemingtonProducts.com

IMPORTANT SAFETY INSTRUCTIONS

When using an electrical appliance, basic precautions should always be observed, including the following. **Read all instructions before using this shaver.**

DANGER

To reduce the risk of electric shock:

- Do not reach for an appliance that has fallen into water. Unplug it immediately.
- Do not use while bathing or in the shower.
- Do not place or drop into water or other liquid.
- Do not place or store this appliance where it can fall or be pulled into a tub or sink.
- Except when charging, always unplug this appliance from the electrical outlet immediately after using.
- Use only when the shaver is in dry condition.
- Detach the appliance from the power supply cord before cleaning.
- Do not submerge in water.

WARNING

To reduce the risk of burns, fire, electric shock, or injury to persons:

- An appliance should never be left unattended when it's plugged in, except when charging a rechargeable appliance.
- Close supervision is necessary when this appliance is used by, on, or near children, or individuals with special needs or certain disabilities.
- Use this appliance only for its intended use as described in this manual. Do not use attachments not recommended by the manufacturer.
- Never operate this appliance if it has a damaged cord or plug or if it is not working properly, if it has been dropped or damaged, or if it has been dropped into water.
- Keep the cord away from heated surfaces.
- Never drop or insert any object into any of the appliance's openings.
- Household use only.

- Do not use outdoors or operate where aerosol (spray) products are being used or where oxygen is being administered.
- Always attach the plug to the appliance, then to outlet. To disconnect, turn all controls to OFF, then remove plug from outlet.
- Always pull on cord plug to unplug from wall socket. Never pull on electric cord.
- Do not plug or unplug this appliance when your hands are wet.
- Do not use an extension cord or a voltage converter with this appliance.
- Do not wrap the cord around the appliance.

- Always store this appliance and cord in a moisture-free area. Do not store it in temperatures exceeding 140°F (60°C).
- Detach removable power cords from appliance for storage.
- Do not use this appliance with a damaged or broken head or cutters, as facial injury may occur.
- Shavers, including the trimmer, are for use on facial hair only. They should not be used for shaving the hair on your head or any other part of your body.
- The power unit is intended to be correctly oriented in a floor mount position.

SAVE THESE INSTRUCTIONS

Product Features



Shaver Parts

1. On/Off button
2. Screens
3. Cutter assembly
4. Hairpocket
5. 3-position pop-up trimmer
6. Head guard
7. Power adapter
8. Power port
9. Cleaning brush

About Your Shaver

FEATURE	F4790	F5790	F6790	F7790
POWER SYSTEM	cord/cordless	cord/cordless	cord/cordless	cord/cordless
FULL CHARGE TIME	2 hrs	2 hrs	2 hrs	2 hrs
CORDLESS SHAVING TIME	60 min	60 min	60 min	60 min
5 MIN QUICK CHARGE	yes	yes	yes	yes
INDICATORS	low battery and charging	battery fuel gauge	digital display	digital display
VOLTAGE TYPE	worldwide	worldwide	worldwide	worldwide
REPLACEMENT PART NO.	SP-290	SP-390 or SP-399	SP-390 or SP-399	SP-390 or SP-399

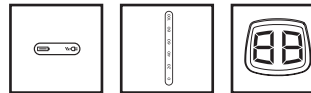
* See "How to order shaver accessories" section on replacement parts.

Cord/Cordless – shaver can be used with or without the power cord.
Quick Charge - Shaver will charge long enough for one shave in 5 minutes.

Indicators

- **Charging Indicator** – green light that glows when the shaver is being charged.
- **Low Battery** – red light that glows when batteries need re-charge.
- **Battery Fuel Gauge** – displays the amount of battery remaining, including low battery.

Digital Display – displays the number of minutes of remaining battery power.



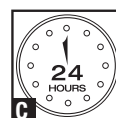
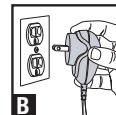
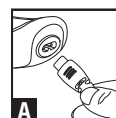
Charging & Low Battery Indicator Battery Fuel Gauge Digital Display

Worldwide Voltage – shaver automatically adapts to an outlet voltage between 100V and 240V.

Charging

Before using, read the important safety instructions in front of the manual.

1. Connect the cord to the shaver and then to the electrical outlet. (Diagrams A & B) The charging indicator light will glow green.
2. Charge your new shaver for 24 hours before its first use. This first charge is important to the shaver's battery life. (Diagram C)



****Use the product until the battery is low. To preserve the life of the batteries, let them fully run out every six months, then recharge them for a full 24 hours* CAUTION!**

- Make sure the shaver and your hands are dry when placing the shaver on charge.
- Always charge the shaver in a cool, dry place.

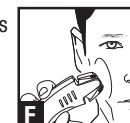
Shave

Before using, read the important safety instructions in front of the manual.

1. Begin by removing the protective head guard from your shaver.
2. Press the on/off button to turn on. (Diagram D)
3. Slide the pop-up trimmer up to engage it and use to remove long hair first. Then slide down when finished. (Diagram E)
4. Stretch the skin with your free hand so the hairs stand upright.



5. Hold the shaving head so all screens touch your skin simultaneously. The independently floating screens automatically adjust to the contours of your face. Only apply light pressure on the shaving head while shaving and use short, circular strokes. (Diagram F)
6. After shaving, turn the shaver off. (Diagram D)



****Remington recommends that you use your new shaver daily for up to three weeks to allow time for your hair and skin to become accustomed to the new shaving system****

Shaving Tips

- Ensure your skin is dry and free of oils.
- Wait at least 15 minutes after getting up before shaving, to ensure your face is free of puffiness that may be present from sleeping.
- Always hold the shaver at a right angle to the skin so the screens are touching the skin with equal pressure.
- Stretch skin with the free hand so hairs stand upright, making it easier for them to enter the cutting chamber.
- Shave with short, circular strokes. The use of short, circular motions in stubborn areas may obtain a closer shave, especially along the neck and chin line.
- Do not press hard against the skin in order to avoid damage to the foil heads.

Trim

Your Remington® electric shaver features a proprietary 3-position pop-up trimmer.

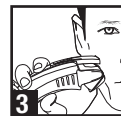
Position 1: Off position



Position 2: Locks the pivoting head



Position 3: Cuts longer hairs before they are shaved close by the foils. Position 3 can also be used to trim or detail facial hair.



or



Cleaning & Care



The shaver is a washable appliance. The head assembly part may be cleaned under water.

■ Do not remove or replace head assembly while shaver is running as it may cause damage to the unit's foils and cutters.

■ To clean the external surfaces of the shaver, use a damp cloth. Do not use strong detergents or other chemicals.

■ To dry, wipe the surface of the shaver with a dry towel. Do not use a hair dryer or heater to dry the shaver.

■ The shaver should not be used until it has dried.

■ This product contains no user serviceable parts.

NOTE: **When cleaning your shaver, make sure the shaver is turned off and disconnected from the power cord.**

For optimal shaver performance, clean your shaver after each use.

CAUTION!

■ Shaver can be placed under running water for cleaning only. Never submerge the shaver in water.

Daily Cleaning:

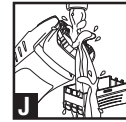
1. Grasp the front and back of the cutter assembly and pull away from the shaver body. (Diagram H)



2. Tap the stubble from the foils and cutters.



3. Use the cleaning brush to sweep any loose hairs from the cutters, hairpocket, and trimmer. Pay close attention to cleaning out the corners and crevices inside the hairpocket. (Diagrams J – K)



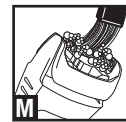
4. After cleaning, replace the hairpocket assembly. (Diagram K)

Monthly Cleaning:

1. Perform the daily cleaning steps 1-4.



2. Place a drop of liquid soap on each cutter and in the hairpocket. (Diagram L)



3. Brush the soap around vigorously with the supplied cleaning brush. Be sure to work the soap into the corners of the hairpocket and into any especially dirty cutters. (Diagram M)



4. Add a small amount of water to the cutters.



5. Replace the foil assembly. (Diagram N)



6. Turn on the shaver for approximately 30 seconds.

7. While the shaver is running, rinse the foils under running water. (Diagram O)

8. Turn off shaver.

9. Remove foil assembly.

10. Rinse the cutters, hairpocket, and foil assembly thoroughly. (Diagram P)

11. Shake off excess water.

12. Replace foil assembly. (Diagram N)

13. Allow shaver to dry before next use.

Battery Removal

When your rechargeable shaver reaches the end of its useful life, the batteries must be removed from the shaver and recycled or disposed of properly in accordance with your state and local requirements. If this is not required by law, you may elect to dispose of the shaver with the batteries.

CAUTION! Do not put in fire or mutilate your batteries when disposing as they may burst and release toxic materials. Do not short circuit as it may cause burns. Dispose of properly in accordance with your local and state requirements.

To Remove the Rechargeable Battery:

1. Remove headguard and hair pocket from shaver.

2. Using a small screwdriver, pry power switch off of shaver.

3. Using a small screwdriver, pry front cover plate (painted section) off of shaver.

4. Using a Phillips screwdriver, remove (4) screws from front of shaver.

5. Take rear housing off of shaver to expose batteries.

6. Cut wires connecting batteries to the circuit board.

7. Remove batteries and dispose of properly.

Power Adaptor

IMPORTANT SAFETY INSTRUCTIONS - SAVE THESE INSTRUCTIONS

DANGER - TO REDUCE THE RISK OF FIRE OR ELECTRIC SHOCK, CAREFULLY FOLLOW THESE INSTRUCTIONS

For connection to a supply not in the U.S.A., use an attachment plug adaptor of the proper configuration for the power outlet.

How To Order Shaver Accessories

Please refer to the shaver comparison and features chart near the front of this manual that lists the correct replacement part number for your shaver.

It is very important to replace your head and cutters when necessary to ensure a close, comfortable shave without irritation. We recommend they be replaced every 6 months. Here are some signs of head and cutter wear, indicating that replacement is needed:

■ **Irritation:** As the heads get excessively worn you may experience some skin irritation. This would be especially noticeable when you apply moisturizing lotion.

■ **Pulling:** When the cutters wear you may feel a sense of pulling and a loss of closeness when you shave. This is an indication that it is time to replace your heads and cutters.

Maintain your shaver's peak performance! Keep your shaver performing like new!

■ Because your satisfaction is important to us, we want to make it simple for you to keep your new shaver performing at its peak.

■ Did you know that for the best possible shave, it is necessary to replace the heads and cutters on your shaver every 6 months?

■ Remington makes this easy!

Two easy ways to order!

1. Call!
U.S. Residents call 800-392-6544
Canadian Residents call 800-268-0425
2. Order Online at www.RemingtonProducts.com

Product Registration

By registering your new Remington product you will receive these important benefits:

- Proof of ownership
- Product protection
- Product registration
- Special offer

Register online at:
www.RemingtonProducts.com

Warranty

Limited Two-Year Warranty

Spectrum Brands, Inc. warrants this product against any defects that are due to faulty material or workmanship for a two-year period from the original date of consumer purchase. This warranty does not include damage to the product resulting from accident or misuse. If the product should become defective within the warranty period, we will replace it free of charge.

Return your product and sales receipt with your name, address and day time phone number to: Remington Returns Center, 507 Stokely Dr., P.O. Box 1, Deforest, WI 53532. For more information call 800-736-4648 in the US or 800-268-0425 in Canada.

Warranty excludes:

■ Foils and cutters

KEEP ORIGINAL SALES RECEIPT AS PROOF OF PURCHASE FOR WARRANTY PURPOSES.

This warranty does not cover products damaged by the following:

- Accident, misuse, abuse or alteration of the product
- Servicing by unauthorized persons
- Use with unauthorized accessories
- Connecting it to incorrect current and voltage
- Wrapping cord around appliance causing premature wear & breakage
- Any other conditions beyond our control

SPECTRUM BRANDS, INC. SHALL NOT BE RESPONSIBLE FOR ANY INCIDENTAL, SPECIAL OR CONSEQUENTIAL DAMAGES RESULTING FROM THE USE OF THIS PRODUCT. ALL IMPLIED WARRANTIES, INCLUDING BUT NOT LIMITED TO IMPLIED WARRANTIES OF FITNESS AND MERCHANTABILITY, ARE LIMITED IN DURATION TO TWO YEARS FROM DATE OF ORIGINAL PURCHASE.

This warranty gives you specific legal rights and you may also have other rights which vary from state to state or province to province. Some states do not allow the exclusion or limitation of incidental, special or consequential damages.

Performance Guarantee

Spectrum Brands, Inc. Money-back Offer

If within 30 days after you have purchased your Remington® branded product, you are not satisfied and would like a refund, return it with the sales slip indicating purchase price and date of purchase to the retailer from whom it was purchased. Spectrum Brands, Inc. will reimburse all retailers who accept the product within 30 days from the date of purchase. If you have any questions concerning the money-back guarantee, please call 800-736-4648 in the US or 800-268-0425 in Canada.

Questions or comments:

Call 800-736-4648 in the US or 800-268-0425 in Canada. Or visit www.RemingtonProducts.com

Dist. by: Spectrum Brands, Inc., Madison, WI 53711

Dist. by: Spectrum Brands Canada, Inc., Mississauga, ON L5L 0A1

® Registered Trademark of ROVCAL, Inc. a subsidiary of Spectrum Brands, Inc.

© 2011 ROVCAL, INC 12/11 Job #CS43021

Manufactured to Remington's specifications in the PRC.

T22-27934

Shaver: 100-240 VAC, 50-60 Hz

Contains



listed adaptor