

RP-AX58

AX3000 Dual Band WiFi 6 (802.11ax) Range Extender / AiMesh Extender

- **Next-Gen WiFi Standard** – Supporting the latest WiFi standard 802.11AX (WiFi 6) and 160MHz bandwidth for better capacity and efficiency.
- **Ultra-fast WiFi Speed** – RP-AX58 supports 160MHz bandwidth and 1024-QAM for dramatically faster wireless connections. With a total networking speed of about 3000Mbps — 574 Mbps on the 2.4GHz band and 2402 Mbps on the 5GHz band.
- **Extend Seamless AiMesh WiFi System** – Expand your current AiMesh network to deliver powerful, seamless WiFi and robust functions on AiMesh router to your entire home.
- **One or Multiple WiFi Name, the Choice is Yours** – When extending an AiMesh network, you can keep one WiFi name (SSID) for the entire network or give individual names to each WiFi band for different uses.
- **Easy Setup with Mobile App** – with ASUS Router app and ASUS Extender app, you can upgrade your home WiFi with just a few taps.
- **Works Perfectly with Any WiFi Router** – RP-AX58 works perfectly with virtually all WiFi routers, modems and cable routers on the market.



Get Your Home Ready for WiFi 6 (802.11ax)

The growing number of connected personal and IoT devices has led to an overall increase in network density that is pushing the limits of the current WiFi standard. The latest 802.11ax standard provides future-proof technologies, higher network efficiency, faster WiFi speeds, greater coverage and improved battery life for connected devices, providing a significantly better networking experience for users.

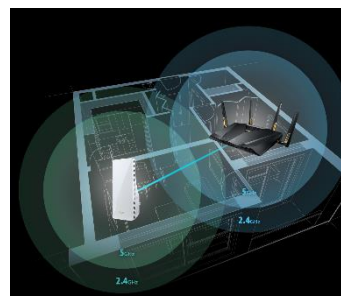
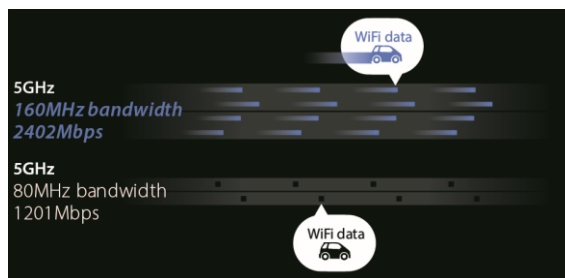
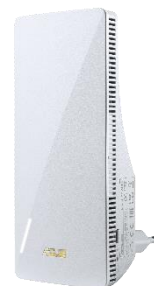
*It requires 802.11ax-compatible devices to enjoy the benefits brought by 802.11ax WiFi standard.

Next-Gen WiFi Speed

RP-AX58 is a 2x2 dual-band WiFi 6 range extender that provides 160MHz bandwidth and 1024-QAM for dramatically faster wireless connections. With a total networking speed of about 3000Mbps — 574Mbps on the 2.4GHz band and 2402 Mbps on the 5GHz band — a truly unleashing of WiFi 6 potential!

Create and Extend Your AiMesh WiFi System

ASUS RP-AX58 is a WiFi 6 AiMesh extender and WiFi range extender that lets you easily expand your current wireless network to deliver powerful and seamless connectivity to every corner of your home. In addition to whole-home WiFi, when used with AiMesh routers, RP-AX58 can extend those AiMesh routers' features.



Incredibly Easy, but Incredibly Powerful

AiMesh is incredibly easy to use, but that doesn't mean it's not powerful. When it is part of an AiMesh network, RP-AX58 still provides comprehensive features and easy central control of all settings from the ASUS Router mobile app or ASUSWRT. So great features like AiProtection, QoS and Parental Controls work across the entire network, ensuring that no-one can bypass them by connecting to a different router. Just remember to always connect your highest-specification router to your internet service.



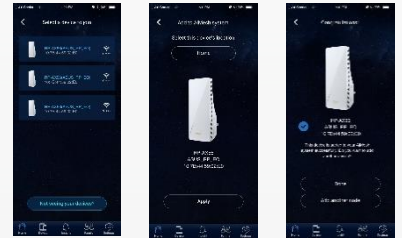
Seamless, Pain-Free WiFi

When used with AiMesh routers, RP-AX58 can create a single, whole-home WiFi network, so you don't have to switch networks as you move throughout your house. AiMesh keeps an eye on the signal strength to your device, and switches it seamlessly to another source if necessary. All you have to do is enjoy it! If you prefer separate network names for each frequency band, you can do that as well — AiMesh is designed to work the way you want!



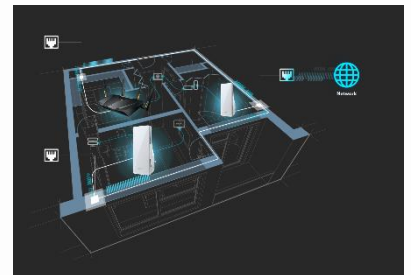
Easy Setup – Extend WiFi from AiMesh Router

1. Search for RP-AX58: Use ASUS Router App then search for RP-AX58.
2. Join RP-AX58 to AiMesh: Click “Apply” to add it to your AiMesh WiFi system.
3. Finish setup your RP-AX58: Click “Done” and finish setup.



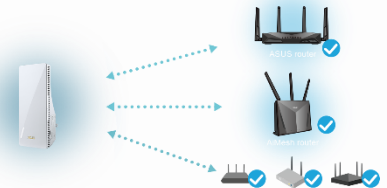
Flexible Backhaul Connection with Router

RP-AX58 supports AP mode, so you can establish Ethernet backhaul with on-wall Ethernet jacks in your home to create a wired connection between the router and RP-AX58. This not only provides even more stable WiFi, but also dedicates the entire 2.4GHz and 5GHz bands to wireless devices for smoother connections.



Works Perfectly with Any WiFi Router

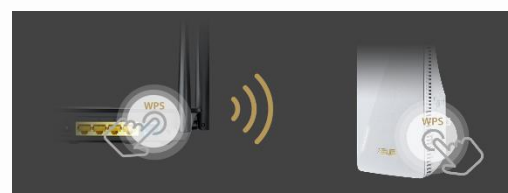
RP-AX58 is also a WiFi 6 range extender that works perfectly with virtually all WiFi routers, modems and cable routers/gateways on the market, so you don't have to worry if you do not have an AiMesh/ASUS router yet.



Easy Setup - Extend WiFi from Non-AiMesh Router

If you don't have an AiMesh router, setting up your RP-AX58 WiFi 6 range extender is still easy. It doesn't require messing with discs, or even a mouse and keyboard. You can use the ASUS Extender app to easily transfer your router's login information to RP-AX58 with just a few taps; or use the Pair buttons on RP-AX58 and your router for instant automatic setup.*

*Pair button setup and ASUS Extender app setup is not applicable when RP-AX58 is working with AiMesh routers.



Specifications

Network Standard	IEEE 802.11a, IEEE 802.11b, IEEE 802.11g, IEEE 802.11n, IEEE 802.11ac, IEEE 802.11ax
Data Rate	802.11a : 6,9,12,18,24,36,48,54 Mbps 802.11b : 1, 2, 5.5, 11 Mbps 802.11g : 6,9,12,18,24,36,48,54 Mbps 802.11n : up to 300 Mbps 802.11ac : up to 1733 Mbps 802.11ax (2.4GHz) : up to 574 Mbps 802.11ax (5GHz) : up to 2402 Mbps
Antenna	Internal antenna x 2
Transmit/Receive	2.4GHz 2x2, 5GHz 2x2
Memory	128MB Flash, 256MB RAM
Operating Frequency	2.4 GHz / 5 GHz
Ports	Gigabits BaseT for Ethernet backhaul port X1
Button	WPS Button, Reset Button
OS Support	Windows® 11 Windows® 10 Windows® 8.1 Windows® 8 Windows® 7 Windows® XP Mac OS X or higher Linux
Dimensions	150 x 72 x 87 ~ mm (WxDxH)
Product weight	190g
Box weight	345g
Box dimension	19.5*14.8*10.3~cm(WxDxH)
Package Content	RP-AX58, Quick Start Guide, Warranty Card
Operation mode	Repeater mode, Access point mode, Media bridge Mode, AiMesh node mode
Note	ASUS Router App; ASUS Extender App