



Philips 9000 series
4K UHD Android TV -
Bowers&Wilkins Sound
with Ambilight 3 sided

Sound by Bowers & Wilkins
164 cm (65") Ambilight TV
Major HDR formats supported
P5 Perfect Picture Engine



65PUS9435

Elegant looks. Cinematic sound.

4K UHD LED Android TV with Ambilight

See every detail. Hear every nuance. This Philips LED TV with built-in up-firing Bowers & Wilkins speakers envelops you in a lifelike picture and immersive audio. Ambilight adds colour to the music, HDR streaming series and films you love.

Immersive light. Immersive audio.

- Bright 4K LED TV. Vibrant HDR picture. Smooth motion.
- Ambilight. Take the emotion beyond the screen.
- Immersive sound. Bowers & Wilkins meets Dolby Atmos.
- Kvadrat speaker cloth. Muirhead leather-backed remote.

Incredible picture. Bowers & Wilkins sound.

- Philips P5 Engine. Whatever the source, always perfection.
- Dolby Vision and Dolby Atmos. Cinematic vision and sound.
- Major HDR formats. See more of what the director intended.
- 2.1.2 sound system. Up-firing speakers for Dolby Atmos.
- Integrated sub-woofer, tweeters and midrange drivers.

Android TV-content at your command

- Android TV. Simply smart.
- Voice control. Google Assistant built-in. Works with Alexa.
- DTS Play-Fi. Multi-room audio.

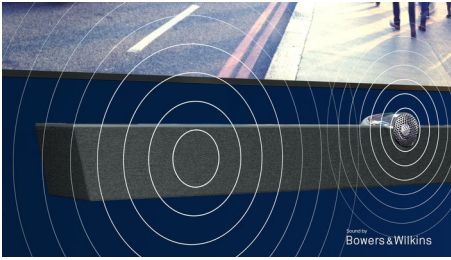
PHILIPS

4K UHD Android TV - Bowers & Wilkins Sound
Sound by Bowers & Wilkins 164 cm (65") Ambilight TV, Major HDR formats supported, P5 Perfect Picture Engine

65PUS9435/12

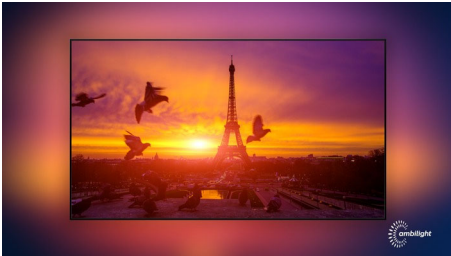
Highlights

Bowers & Wilkins sound



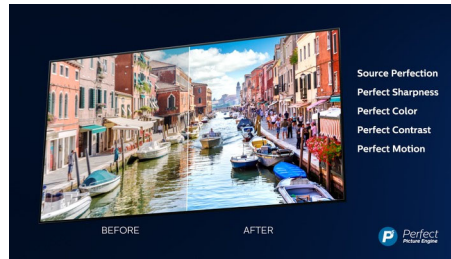
An exclusive speaker design by legendary audio engineers Bowers & Wilkins delivers thrillingly lifelike performance. Up-firing speakers let you get the most out of Dolby Atmos. A central tweeter keeps the dialogue pristine no matter how intense the drama gets.

Ambilight 3 sided



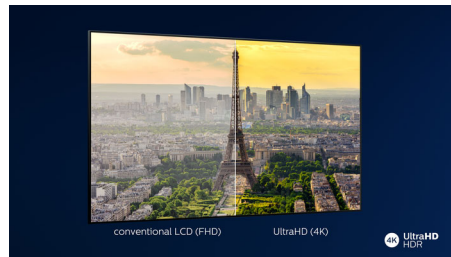
With Philips Ambilight, movies and games feel more immersive. Music gets a light show. And your screen will feel bigger than it is. Intelligent LEDs around the edges of the TV cast on-screen colours onto the walls and into the room, in real time. You get perfectly tuned ambient lighting. And one more reason to love your TV.

P5 Perfect Picture Engine



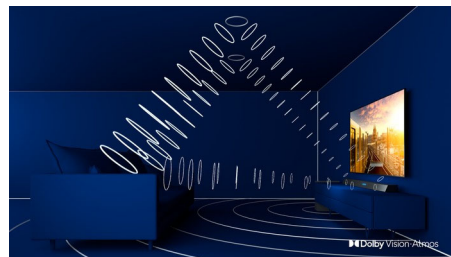
The Philips P5 engine delivers a picture as brilliant as the content you love. Details have noticeably more depth. Colours are vivid, while skin tones look natural. Contrast is so crisp you'll feel every detail. Motion is perfectly smooth.

4K UHD



Bright 4K LED TV. Vibrant HDR picture. Smooth motion. A Philips 4K UHD TV brings content to life with rich colours and crisp contrast. Images have more depth and motion is smooth. Movies, shows, games and more look great no matter the source.

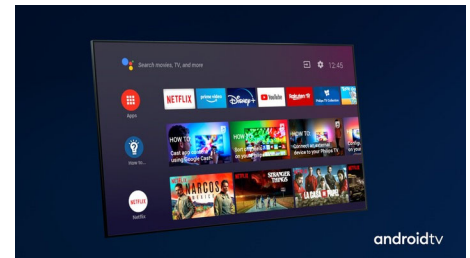
Dolby Vision and Dolby Atmos



Support for Dolby's premium sound and video formats means the HDR content you watch will look—and sound—gloriously real.

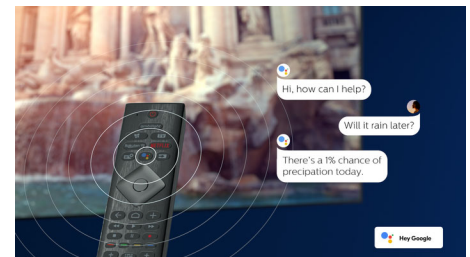
Whether it's the latest streaming series or a Blu-Ray disc set, you'll enjoy contrast, brightness and colour that reflect the director's original intentions. And hear spacious sound with clarity, detail and depth.

Android TV



Your Philips Android TV gives you the content you want—when you want it. You can customise the home screen to display your favourite apps, making it simple to start streaming the movies and shows you love. Or pick up where you left off.

Voice assistant



Control your Philips Android TV with your voice. Want to play a game, watch Netflix or find content and apps in the Google Play store? Just tell your TV. You can even command all Google Assistant-compatible smart home devices, like dimming the lights and setting the thermostat on movie night. Without leaving the sofa. The days of searching for the TV remote are over. Now you can use your voice to control your Philips smart TV via Alexa-enabled devices, like Amazon Echo. Turn your TV on, change the channel, switch to your gaming console and more with Alexa.



4K UHD Android TV - Bowers & Wilkins Sound

Sound by Bowers & Wilkins 164 cm (65") Ambilight TV, Major HDR formats supported, P5 Perfect Picture Engine

Specifications

Ambilight

- Ambilight Version: 3 sided
- Ambilight Features: Built-in Ambilight+hue, Ambilight Music, Game Mode, Wall colour adaptive, Lounge mode, AmbiWakeup, AmbiSleep

Picture/Display

- Diagonal screen size: 65 inch / 164 cm
- Display: 4K Ultra HD LED
- Panel resolution: 3840 x 2160
- Aspect ratio: 16:9
- Pixel engine: P5 Perfect Picture Engine
- Picture enhancement: Ultra Resolution, Wide Colour Gamut 90% DCI/P3, Dolby Vision, HDR10+, 2400 PPI

Supported Display Resolution

- Computer inputs on all HDMI: up to 4K UHD 3840 x 2160 @60 Hz, HDR supported, HDR10/HLG, HDR supported, HDR10+/HLG
- Video inputs on all HDMI: up to 4K UHD 3840 x 2160 @60 Hz, HDR supported, HDR10/HLG (Hybrid Log Gamma), HDR10+/Dolby Vision

Android TV

- OS: Android TV™ 9 (Pie)
- Pre-installed apps: Google Play Movies*, Google Play Music*, Google Search, YouTube, Amazon instant video, BBC iPlayer, Netflix
- Memory size (Flash): 16 GB*

Smart TV Features

- Interactive TV: HbbTV
- Programme: Pause TV, USB recording*
- Ease of Installation: Auto detect Philips devices, Device connection wizard, Network installation wizard, Settings assistant wizard
- Ease of Use: One-stop smart menu button, On-screen user manual
- Firmware upgradeable: Firmware auto upgrade wizard, Firmware upgradeable via USB, Online firmware upgrade
- Screen Format Adjustments: Basic - Fill Screen, Fit to screen, Advance - Shift, Zoom, stretch, Wide screen
- Remote Control: with Voice, with Key light, with Muirhead leather
- User Interaction: SimplyShare
- Voice assistant*: Google Assistant built in, RC with Mic., Works with Alexa

Processing

- Processing Power: Quad Core

Tuner/Reception/Transmission

- HEVC support
- Digital TV: DVB-T/T2/T2-HD/C/S/S2
- MPEG Support: MPEG2, MPEG4
- Video Playback: PAL, SECAM
- TV Programme guide*: 8-day Electronic Programme Guide
- Signal strength indication
- Teletext: 1000 page Hypertext

Connectivity

- Number of HDMI connections: 4
- Number of USBs: 2
- Wireless connections: Bluetooth 4.2, Wi-Fi 802.11ac, 2 x 2, Dual band
- Other connections: Common Interface Plus (CI+), Digital audio out (optical), Satellite Connector, Ethernet-LAN RJ-45, Headphone out, Service connector
- HDMI features: 4K, Audio Return Channel
- EasyLink (HDMI-CEC): Remote control pass-through, System audio control, System standby, One touch play
- HDCP 2.3: Yes on all HDMI

Multimedia Applications

- Video Playback Formats: Containers: AVI, MKV, H264/MPEG-4 AVC, MPEG-1, MPEG-2, MPEG-4, WMV9/VC1, HEVC (H.265), VP9
- Subtitles Formats Support: .SRT, .SUB, .TXT, .SMI
- Music Playback Formats: AAC, MP3, WAV, WMA (v2 up to v9.2), WMA-PRO (v9 and v10)
- Picture Playback Formats: JPEG, BMP, GIF, PNG, 360 photo, HEIF

Power

- Mains power: AC 220 - 240 V 50/60 Hz
- Ambient temperature: 5°C to 35°C
- EU Energy Label power: 146 W
- Annual energy consumption: 214 kWh
- Standby power consumption: <0.3 W
- Power Saving Features: Auto switch-off timer, Light sensor, Picture mute (for radio), Eco mode
- Energy Label Class: A
- Presence of lead: Yes*
- Off mode power consumption: N/A W

Sound

- Sound Enhancement: 5 Band Equalizer, A.I. Sound, Clear Dialogue, Dolby Bass Enhancement, Dolby Volume Leveller, Night mode, Dolby Atmos®
- Speaker configuration: 2 x 6 W mid speaker, 2 x 9 W

65PUS9435/12

high speaker, 20 W woofer

- Audio: Sound by Bowers & Wilkins, 2.1.2 Channel, Output power: 50 Watt (RMS)
- Codec: AC-4, Dolby Atmos®, Dolby Digital MS12 V2.3, DTS-HD(M6)

Dimensions

- Box dimensions (W x H x D): 1660.0 x 1088.0 x 174.0 mm
- Product weight: 27.9 kg
- Product weight (+stand): 32.3 kg
- Set dimensions (W x H x D): 1448.4 x 829.7 x 52.3 mm
- Set dimensions with stand (W x H x D): 1448.7 x 895.2 x 281.8 mm
- Stand dimensions (W x H x D): 880.0 x 81.7 x 281.8 mm
- Weight incl. Packaging: 32.9 kg
- VESA wall mount compatible: 300 x 300 mm

Design

- Colours of TV: Mid silver metal bezel
- Stand design: Dark chrome sound solution

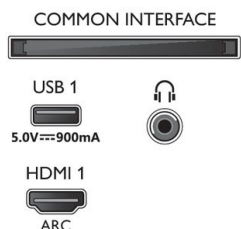
Accessories

- Included Accessories: Legal and safety brochure, Power cord, Quick start guide, Remote Control, 2 x AAA Batteries, Stand with sound solution

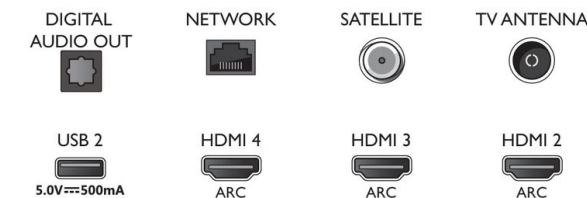


Connections

Side



Bottom



Issue date 2020-10-14

Version: 10.3.1

12 NC: 8670 001 66974
EAN: 87 18863 02408 9

© 2020 Koninklijke Philips N.V.
All Rights reserved.

Specifications are subject to change without notice.
Trademarks are the property of Koninklijke Philips N.V.
or their respective owners.

www.philips.com

* EPG and actual visibility (up to 8 days) is country- and operator-dependent.

* Android App offerings vary per country. For more details please visit your local Google Play Store.

* Energy consumption in kWh per year based on the power consumption of the television operating 4 hours per day for 365 days. The actual energy consumption will depend on how the television is used.

* The TV supports DVB reception for 'Free to air' broadcast. Specific DVB operators may not be supported. An up to date list can be found in the FAQ section of the Philips support website. For some operators Conditional Access and subscription are required. Contact your operator for more information.

* Philips TV Remote app and related functionalities vary per TV model, operator and country, as well as smart device model and OS. For more details please visit: www.philips.com/TVRemoteapp.

* Smart TV app availability varies per TV model and country. For more details please visit: www.philips.com/smarttv.

* USB recording for digital channels only, recordings may be limited by broadcast copy protection (CI+). Country and channel restrictions may apply.

* Please note that your Amazon Apps may not always be available in your country. (Currently Amazon apps works only in the UK, Germany and Austria)

* This television contains lead only in certain parts or components where no technology alternatives exist in accordance with existing exemption clauses under the RoHS Directive.

* Cloud Gaming offering depends on game providers.

* *Memory size (Flash): 16 GB (the actual available disk space may differ depending on e.g. (pre-)installed apps, installed operating system etc.)

* HDMI connection is required for soundbar, speaker and other audio device.