

## Get Ready

- Prepare your Wi-Fi network and password.
  - Make sure your mobile device is running iOS8 or higher or Android4.1 or higher.
  - Make sure 2.4 GHz Wi-Fi network is used. 5 GHz network is not supported.
- 1 Download and install the DENVER SMART HOME app from App Store or Google Play.

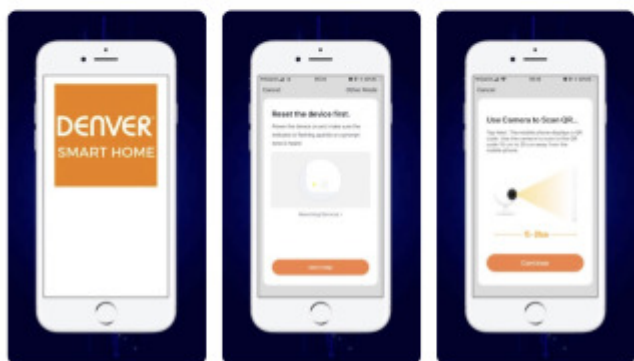
denver smart home Cancel



DENVER SMART HO...

Utilities

GET



Google Play

denver smart home

Underholdning

Søg - Alle resultater

Apps

Film

Musik

Bøger

Enheder

Konto

Betalingsmetoder

Mine abonnementer

indlæs

Min ønskeliste

Min Play-aktivitet

Foreldrevejledning

E-bøger

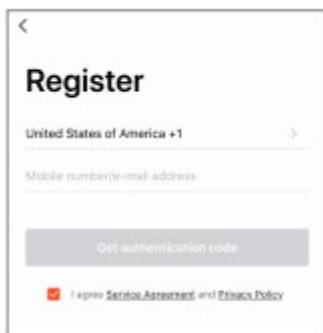
Smart Homes and Health Televisas Cathy Boone 481,10 kr - 280,78 kr	The Push: A Climber's Search for the Path Tommy Caldwell 118,00 kr - 97,67 kr	Denver's Lakeside David Forsyth 200,40 kr - 162,69 kr	A Room Full of Bones Eily Griffiths 129,24 kr - 95,37 kr

Apps

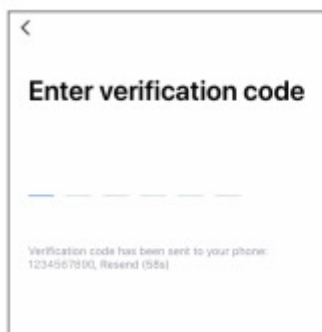
Denver Smart Life DENVER ELECTRONICS ★★★★	DENVER SMART HOME DENVER ELECTRONICS ★★★★	Smart Life - Smart Tija Inc ★★★★	DENVER IPC DENVER ELECTRONICS ★★★★

ONTDEK HET OP Google Play

## 2 Register an account on your DENVER SMART HOME app



STEP 1.  
Enter your mobile phone  
number or email address.



STEP 2.  
Enter the verification code  
and create a password.

## 3 Power connection

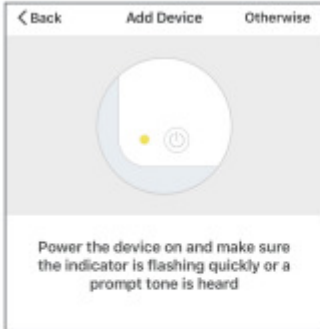
### How do I reset my device?

- . Use the reset pin to press and hold the Reset Button for several seconds until the camera starts to beep.
- . Insert Micro SD card



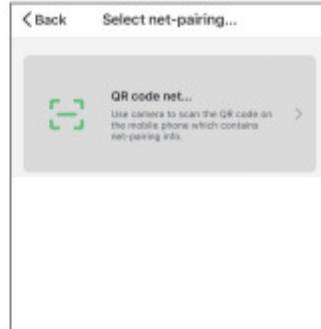
#### 4 Add camera to the app

##### Option 1: Use QR code



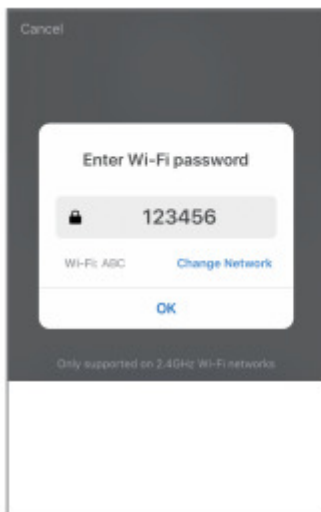
##### STEP 1

In the app, on the top right corner of the "Add device" screen, tap "Otherwise".



##### STEP 2

Choose "QR code"



##### STEP 3

Enter your Wi-Fi network and password.

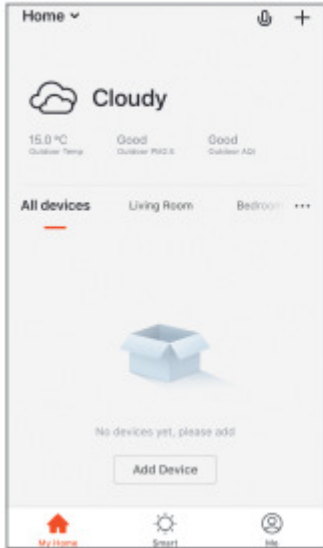


##### STEP 4

Scan the QR Code with the camera.

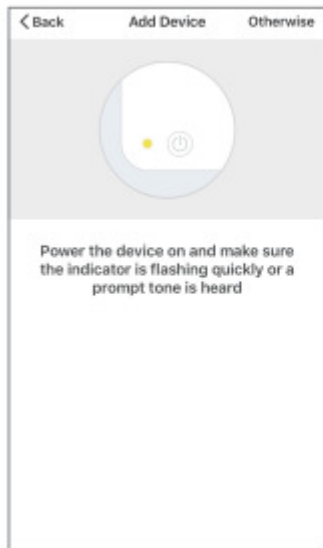
#### 5 Add camera to the app

##### Option 2: Use smart configuration



### STEP 1

In the app, on the top right corner of the main screen, Tap (+). Then choose “Smart Camera”



### STEP 2

Make sure the indicator light on the camera is flashing red, indicating the camera is ready to connect. If not, follow the instructions to reset the camera so that the indicator light flashes red, then tap “Next Step”.

Smart Camera is located in “security & sensor” category of the app.

## Frequently Asked Questions

### 1 Can I share the camera to family and friends?

Yes, you can share your camera to family and friends, so that they can access the camera and control your electrical bulbs, power switch, and other devices. In the app, tap the Profile button and tap the “Home Management” button, then you can give or revoke sharing permissions. To make the sharing possible to other users, they need to download the app and register a new account.

### 2 What's the wireless range?

The range of the wireless camera is heavily determined by your Wi-Fi router and the conditions of the room. Check your router specifications for exact range data.

### 3 The camera appears offline or unreachable?

Make sure your Wi-Fi router is online and in range.

Make sure you have the latest app available by tapping “Check for firmware update” in the device settings of the app.

### 4 The camera cannot connect to your Wi-Fi network.

Make sure you entered the correct Wi-Fi password during the Wi-Fi setup. Check whether there is any Internet connection problem. If the Wi-Fi signal is too weak, reset your Wi-Fi router and try again.

### 5 How many cameras can I connect?

DENVER SMART HOME app can connect an unlimited number of the devices in an unlimited number of device locations. A Wi-Fi router may have a limit on the number of the device for connection.

## AC/DC ADAPTER

Manufacturer's name, commercial registration number and address	Manufacturer's name: Shenzhen Shian Power Supply Technology Co.,Ltd Commercial registration number: 91440300MA5ECNCN1E Address: 7F, Building A, Jinhong Industrial Park, Jiuwei 3rd Industrial Zone, Hangcheng Street, Bao an District, Shenzhen, China
Model identifier	SA-1201000EU
Input voltage	100-240V AC
Input AC frequency	50/60
Output voltage	12V±5%
Output current	1A
Output power	12W
Average active efficiency	79%
Efficiency at low load (10%)	75%
No-load power consumption	0.1W

Please notice - All products are subject to change without any notice. We take reservations for errors and omissions in the manual.

ALL RIGHTS RESERVED, COPYRIGHT DENVER ELECTRONICS A/S

# DENVER®

www.denver-electronics.com



Electric and electronic equipment contains materials, components and substances that can be hazardous to your health and the environment, if the waste material (discarded electric and electronic equipment) is not handled correctly.

Electric and electronic equipment is marked with the crossed out trash can symbol, seen above. This symbol signifies that electric and electronic equipment should not be disposed of with other household waste, but should be disposed of separately.

All cities have established collection points, where electric and electronic equipment can either be submitted free of charge at recycling stations and other collection sites, or be collected from the households. Additional information is available at the technical department of your city.

Hereby, Inter Sales A/S declares that the radio equipment type IOC-221 is in compliance with Directive 2014/53/EU. The full text of the EU declaration of conformity is available at the following internet address: [www.denver-electronics.com](http://www.denver-electronics.com) and then click the search ICON on topline of website. Write model number: IOC-221 .Now enter product page, and red directive is found under downloads/other downloads.

Operating Frequency Range:2412MHZ~2472MHZ

Max Output Power:6W

DENVER ELECTRONICS A/S

Omega 5A, Soeften

DK-8382 Hinnerup

Denmark

[www.facebook.com/denverelectronics](http://www.facebook.com/denverelectronics)