

# INTEX® OWNER'S MANUAL

## ZR200 Rechargeable Pool Vacuum

Model CL2508P MAX. WATER TEMPERATURE 35°C

READ AND FOLLOW ALL INSTRUCTIONS BEFORE USING THIS PRODUCT



## WARNING

- Assembly and disassembly by adults only.
- This is not a toy. Do not allow children to play with this product.
- Do not use if unit is damaged in any way. Replace damaged components promptly.
- This vacuum creates suction. Keep hair, loose clothing, fingers, and any body parts away from openings and moving parts.
- Use only accessories and replacement parts specified in this manual.
- Never leave this product plugged into the main outlet for long term storage.
- Never leave this product in the water when it is OFF or has run out of battery power.
- Do not use this product for pool opening (start of the season). This product is design for routine general maintenance of your pool or spa. Do not use for cleaning of longer accumulated heavy dirt such as at the start of the pool season.
- This product is designed for underwater use: must be submerged to operate properly. Do not use this product as an all-purpose vacuum cleaner.
- Do not use this product without the filter bag and/or vacuum body cover.
- Do not vacuum sharp objects, as this may damage the filter bag.
- Do not vacuum toxic substances, flammable or combustible liquids such as gasoline, or operate in the presence of explosive or flammable fumes.
- Never insert or drop objects into any opening on the device. Keep all openings free of leaves, debris, or anything that may reduce the water flow.
- Always turn off and unplug the device before cleaning, servicing, changing the filter bag or any routine maintenance.
- Do not charge the product with a damaged plug charger.
- Charge the product indoors in a clean and dry place. Do not expose to rain or extreme temperature and do not handle with wet hands during charging. Never charge the product while operating it.
- This product contains sealed nickel metal-hydride (Ni-MH) rechargeable batteries. Do not dispose of product in regular trash, municipal waste stream or by fire as the built-in rechargeable battery may leak or explode. Always dispose of the batteries in accordance with your local law and regulations.
- This product is intended to be used only for the purposes described in the manual.

**FOLLOW THESE RULES AND ALL INSTRUCTIONS TO AVOID PROPERTY DAMAGE OR OTHER INJURY.**

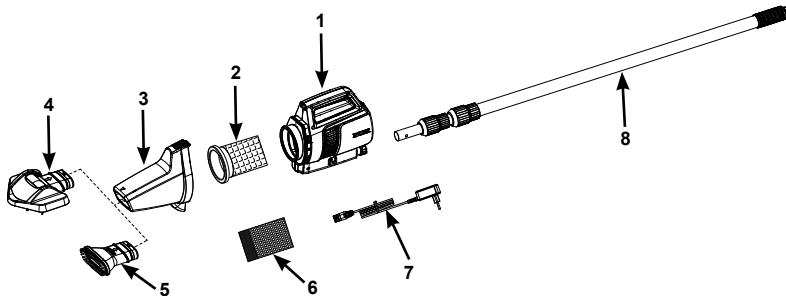
©2023 Intex Marketing Ltd. - Intex Development Co. Ltd. - Intex Recreation Corp. All rights reserved/Tous droits réservés/Todos los derechos reservados/Alle Rechte vorbehalten. Printed in China/Imprimé en Chine/Impresso en China/Gedruckt in China.

®™ Trademarks used in some countries of the world under license from®™ Marques utilisées dans certains pays sous licence de/Marcas registradas utilizadas en algunos países del mundo bajo licencia de/Warenzeichen verwendet in einigen Ländern der Welt in Lizenz von/Intex Marketing Ltd. to/à/a/an Intex Development Co. Ltd., Hong Kong & Intex Recreation Corp., P.O. Box 1440, Long Beach, CA 90801 • Distributed in the European Union by/Distribué dans l'Union Européenne par/Distribuido en la unión Europea por/Vertrieb in der Europäischen Union durch/Intex Trading B.V., Eitensweg 46, 4706 PB Roosendaal - The Netherlands • Distributed in the UK by Unites Service (UK) Limited, 21 Holborn Viaduct, London EC1A 2DY, UK.  
www.intexcorp.com

# INTEX®

## SAVE THESE INSTRUCTIONS

## PARTS LIST

128  
PO

**NOTE:** Drawings for illustration purpose only. Actual product may vary. Not to scale.

REF. NO.	DESCRIPTION	QTY.	SPARE PART NO.
1	VACUUM BODY WITH NON-REPLACEABLE BATTERY	1	13269E
2	FILTER BAG WITH GASKET	1	13268
3	VACUUM BODY COVER	1	13275
4	LARGE VACUUM BRUSH HEAD	1	13271
5	VACUUM NOZZLE	1	13272
6	MICRO-FILTER BAG	1	13253
7	CHARGER	1	13273
8	TELESCOPING ALUMINUM POLE	1	13270

**General:**

- A full charge takes about 5-6 hours; provides about 100 minutes of operation.
- Make sure the charging receptacle on the product is dry before any recharging.

**Charging the Battery:**

1. Plug the charger into the main electrical outlet and the other end into the vacuum body (1) charging receptacle. See fig 1. The indicator light will turn on.
2. During charging, the battery indicator light will flash and light up according to the remaining charge in the battery. Four lights indicate full charge; three lights indicate good charge; 2 lights indicate low charge and one light flashing indicates that the battery must be recharged. See fig 2.

**Note:** For the first time use or after a long term storage, the device must be charged for 6 hours before using it.

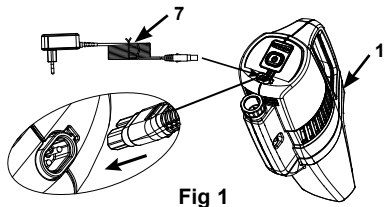


Fig 1

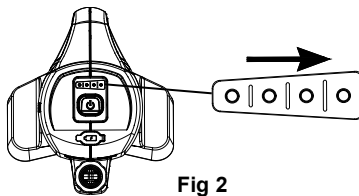


Fig 2

# SAVE THESE INSTRUCTIONS

**Installation:**

1. Insert the filter bag with gasket (2) into the vacuum body (1). See fig 3.1.  
For vacuuming fine-small particles: insert the micro-filter bag (6) into the filter bag with gasket (2), making sure the micro-filter bag "wraps over" the filter bag gasket (2). Then place the entire filter bag with the micro-filter bag into the vacuum body. See fig 3.2.
2. Install the vacuum body cover (3) onto the vacuum body (1). See fig 3.3.  
**Note:** When removing the vacuum body cover (3), press the spring button to release the vacuum body cover. See fig 3.4.

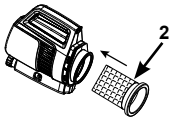


Fig 3.1

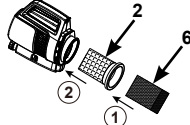


Fig 3.2

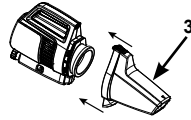


Fig 3.3

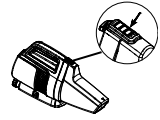


Fig 3.4

3. Attach the desired cleaning head accessory to the vacuum body cover. See fig 4.  
**Note:** Make sure the arrow on the vacuum body cover (3) matches the arrow on the vacuum brush head (4) or vacuum nozzle (5).

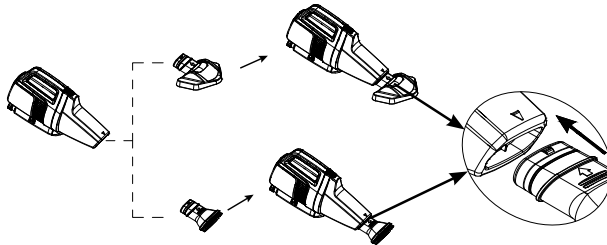


Fig 4

4. Attach the aluminum pole (8) by squeezing the spring buttons and inserting into handle of the vacuum body (1). Check the buttons "pop" into the holes. Adjust the length of the shaft by unlocking, extending and locking each section accordingly. See fig 5.

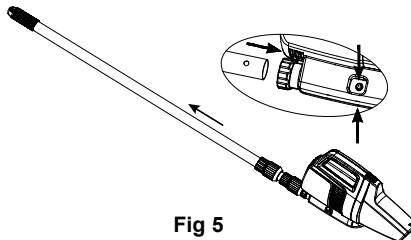


Fig 5

**IMPORTANT**

The vacuum body will not operate unless it is submerged in water. Water flow from sides of the vacuum body indicates the product is working.

**SAVE THESE INSTRUCTIONS**

**Operation:**

1. Make sure the charging receptacle is securely covered with the rubber flap first. See fig 6. Press the power button first, the battery indicator light will turn on. Then place the vacuum in the water. See fig 6.1.

As the device is used, the battery indicator light will decrease showing the status of the battery. When battery indicator is flashing one light, you must recharge the device immediately. If not done so, the light will flash for a few minutes, the vacuum motor will stop and the indicator light will turn off. See fig 6.2. Press the power button to view the battery charge status.

**Note:** Always turn off the power button when the device is not in use or during long term storage in order to prevent damage to the battery.

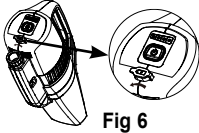


Fig 6

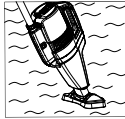


Fig 6.1

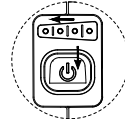


Fig 6.2

2. Carefully "sweep" the surface of the spa or pool to remove debris.
  3. Check and empty the filter bag/micro-filter bag regularly during and after each use.
  4. Reverse the above installation steps to remove and empty the filter bag/micro-filter bag.
- Note:** Rinse vacuum body, cover and filter bags with a garden hose before reassembling.

**Maintenance and long term storage:**

1. Turn off the vacuum before cleaning, servicing and maintenance. Regularly check all components for sign of damage. Discard and replace damaged components immediately.
2. Using the installation instructions in reverse, disassemble the vacuum. Clean all the components with water, and make sure all components are thoroughly dry before storage.
3. Store the product and accessories in a dry, temperature controlled, between 0° – 40°C (32° – 104°F), storage location.
4. To protect and extend the life of the battery, make sure the battery is charged before long term storage, and charge the battery every 3 months thereafter.
5. The original packing can be used for storage.

TROUBLE	SOLUTION
VACUUM DOESN'T WORK	<ul style="list-style-type: none"> <li>• Charge the product then turn on the unit. Ensure the power button is on.</li> <li>• Keep the vacuum body under the water.</li> </ul>
LOW SUCTION	<ul style="list-style-type: none"> <li>• Choose the suitable bag for filtering and install the filter bag(s) correctly.</li> <li>• Check and empty the filter bag(s) regularly during and after each use.</li> <li>• Check for any sand or deposits in the vacuum.</li> <li>• Check if the battery power is too low. If it is too low, recharge it.</li> <li>• Contact Intex Service Center.</li> </ul>
CHARGING FAILED	<ul style="list-style-type: none"> <li>• Plug the charger into the main electrical outlet first, then connect the cable into the vacuum body charging receptacle.</li> <li>• Ensure the charger cable is securely inserted into the charging receptacle, the indicator light should be on.</li> </ul>
DOESN'T CLEAN THE POOL	<ul style="list-style-type: none"> <li>• Check if the battery power is too low. If it is too low, recharge it.</li> <li>• Use the correct vacuum head: use the large vacuum brush head for flat open surfaces, and the vacuum nozzle head for corners, steps and uneven surfaces.</li> <li>• Use the correct filter bag, see "Installation" section.</li> <li>• Ensure the vacuum head or nozzle is close to the surface of the wall or floor, and reduce the sweeping movement and speed during vacuuming.</li> <li>• The bristles of the vacuum brush head are worn out, replace a new brush head.</li> <li>• For heavy stains on the pool wall, it's recommended emptying the pool and scrub the wall with mild detergent.</li> </ul>

## SAVE THESE INSTRUCTIONS

## Limited Warranty

Your ZR200 Rechargeable Pool Vacuum has been manufactured using the highest quality materials and workmanship. All Intex products have been inspected and found free of defects prior to leaving the factory. This Limited Warranty applies only to the ZR200 Rechargeable Pool Vacuum.

The provisions of this Limited Warranty apply only to the original purchaser and is not transferable. This Limited Warranty is valid for a period of one (1) year from the date of the initial retail purchase. Keep your original sales receipt with this manual, as proof of purchase will be required and must accompany warranty claims or the Limited Warranty is invalid.

If a manufacturing defect is found within this one (1) year period, please contact the appropriate Intex Service Center listed in the separate "Authorized Service Centers" sheet. The Service Center will determine the validity of the claim. If the Service Center directs you to return the product, please carefully package the product and send with shipping and insurance prepaid to the Service Center. Upon receipt of the returned product, the Intex Service Center will inspect the item and determine the validity of the claim. If the provisions of this warranty cover the item, the item will be repaired or replaced at no charge.

Any and all disputes regarding the provisions of this Limited Warranty shall be brought before an informal dispute settlement board and unless and until the provisions of these paragraphs are carried forth, no civil action may be instituted. The methods and procedures of this settlement board shall be subject to the rules and regulations set forth by the Federal Trade Commission (F.T.C.). IMPLIED WARRANTIES ARE LIMITED TO THE TERMS OF THIS WARRANTY AND IN NO EVENT SHALL INTEX, THEIR AUTHORIZED AGENTS OR EMPLOYEES BE LIABLE TO THE BUYER OR ANY OTHER PARTY FOR DIRECT OR CONSEQUENTIAL DAMAGES OR LIABILITIES. Some states, or jurisdictions do not allow the exclusion or limitation of incidental or consequential damages, so the above limitation or exclusion may not apply to you.

This Limited Warranty does not apply if the ZR200 Rechargeable Pool Vacuum is subject to negligence, abnormal use or operation, accident, improper operation, improper voltage or current contrary to operating instructions, or to damage by circumstances beyond Intex's control, including but not limited to, ordinary wear and tear and damage caused by exposure to fire, flood, freezing, rain, or other external environmental forces. This Limited Warranty applies only to those parts and components sold by Intex. The Limited Warranty does not cover unauthorized alterations, repairs or disassembly by anyone other than Intex Service Center personnel.

**DO NOT GO BACK TO THE PLACE OF PURCHASE FOR RETURN OR REPLACEMENT. IF YOU ARE MISSING PARTS OR NEED ASSISTANCE, PLEASE CALL US (FOR U.S. AND CANADIAN RESIDENTS): 1-310-549-8235 OR VISIT OUR WEBSITE: WWW.INTEXCORP.COM.**

Proof of Purchase must accompany all returns or the warranty claim will be invalid.

# SAVE THESE INSTRUCTIONS