

25G System – The RJ45 building cabling with future



Intelligent system solution for the highest-performing, future-oriented structured cabling

Today, the need for high data transfer rates is enormous. On 12 September 2017, the Internet node in Frankfurt reported a new record of 5.88 terabits per second. In the current year 2021, peaks will go up to over 10.4 per second.

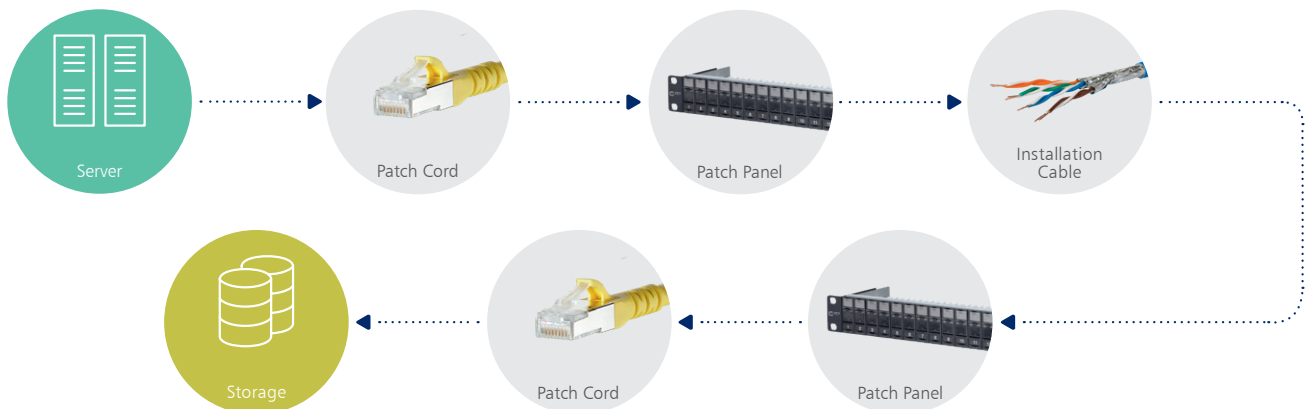
Because the increase of the data transfer is not linear, a doubling of the traffic has taken less than two years. This also applies to public buildings, office complexes as well as to properties and private real estate. A forward-looking, intelligent building cabling for a wide variety of uses is similar important to residents as basic building control systems. It helps owners to manage their investments over the years as well as to minimize installation and maintenance costs. As a guide for planning and implementation of cabling systems there are national and international standards, however they only represent a basis. Important for a sustainable, structured building cabling are continuous, internationally standardized and powerful network solutions. These needs are covered by our new 25G connection system with transmission rates up to 25 Gigabit per second. Be-

cause of its high system capability, the new module can be used in a wide variety of applications. In addition to the 25Gmodul, we also offer solutions in the P|Cabling product range for structured building and industrial cabling as well as data centers. These are highly specialized, internationally standardized and powerful connection components and systems in copper and fiber optic technology.

All these products offer a high level of installation friendliness, maximum quality and highest system capability across all relevant performance classes. With RJ45, we offer the 25G system with transmission rates up to 25 GBit/s. In Fiber Optic from Singelmode OS2 up to the new Multimode OM5 products, for transmission rates of 100 GBit/s and more.

The highest compatibility for efficient use

Our new connection system is consistent and compatible - a requirement for transparent, efficient and individual use of future-oriented network and cabling systems. Build today the network infrastructure of tomorrow. The minimum additional monetary cost for material provides you with 2.5 times higher transmission speed compared to a 10Gbit system.

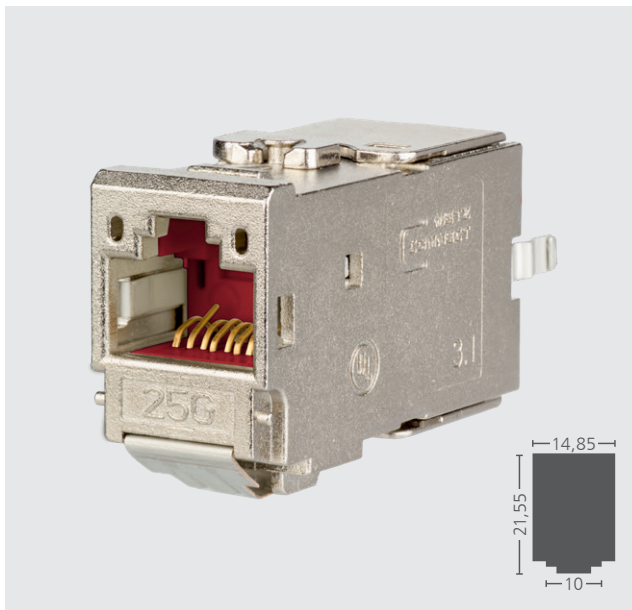


Performance overview 25Gmodul and 25Gmodul Keystone

This flexible, modular heart of the system manages to ensure a general cabling basis, Non-regarding which communication application is transmitted.

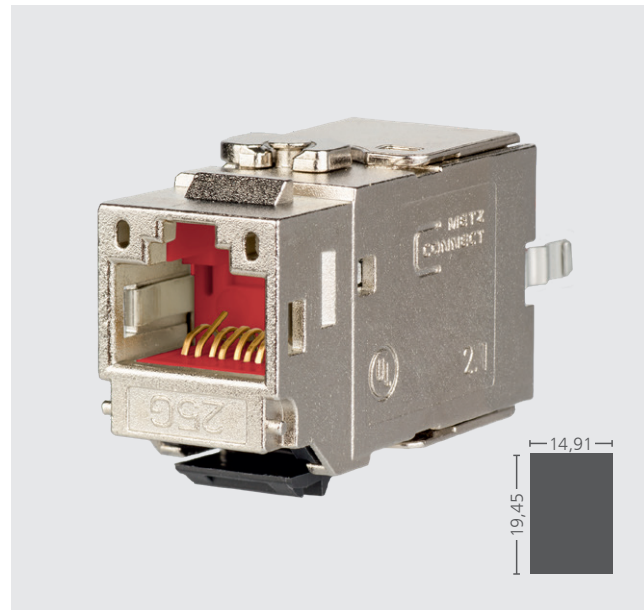
- > RJ45 according to 60603-7-1
- > GHMT certified according to DTR-11801-9905 for 25GBaseT in channel link with 30 m
- > Completely backward compatible through compliance with Class E_A according to ISO/IEC 11801-1 and DIN EN 50173-1 (in permanent link up to 90 m; in channel link to 100 m)
- > 2 mounting version: module and Keystone
- > Connection without special tools, short assembly and connection time
- > Patch cord and installation cable can be connected in sizes AWG 26/7 – 22/7 and AWG 26/1 – 22/1
- > suitable for 25Gbit (IEEE 802.3bq) and 10Gbit Ethernet (IEEE 802.3an), remote powering (PoE, PoE plus, UPoE and 4PPoE) and HDBaseT
- > robust and reusable zinc diecast module housing
- > intelligent cable management in the charging parts, also suitable for heavily twisted cables, as well as easy installation in various applications
- > Strain relief by means of a red locking clip directly on the charging piece
- > 360° shield
- > a dust cover is optionally available

Variants 25Gmodul
(Installation cut-out design module)



25Gmodul

Variants 25Gmodul K
(Installation cut-out design keystone)



25Gmodul K

Versatile and universal – system solutions from a single source

The challenge to a future-oriented connection system, which can be used universally and flexible, is enormous. The 25Gmodul connection system met these complex requirements: This enables a use in a wide variety of applications, including the already existing applications of the C6Amodul and E-DAT module systems, as well as in the available Keystone applications on the market. The new 25G System offers you the ability to extend your existing network infrastructure up to 100 m link lengths for 10GBaseT (10G Ethernet). If you are using a 25G compatible installation cable and patch cord, you can provide 25GBaseT (25GEthernet) up to 30 m link lengths in the building cabling and data centers. Further advantages are the simple

and cost-effective assembly without special tools as well as the direct use of switch manufacturer-labeled covers. Our network components forms a continuous system - from server via patch cord, patch panel and wall outlet up to the end device we offer compatibility from one source. The advantages of our system solutions are increased safety and a clear installation and installation simplification. The minimum additional monetary cost for material provides you with 2.5 times higher transmission speed compared to a 10Gbit system.

Applications for the 25Gmodul



Wall outlets



DIN rail housing REGplus



Wall outlet



Patch panel with Patch-Management sensor, unequipped 24 port



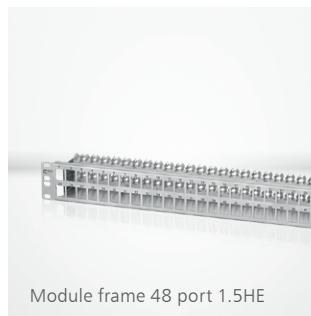
Underfloor GB2/GB3



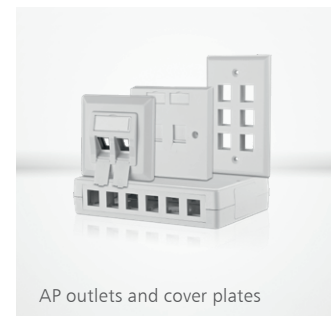
Surface-mounted housing
3, 4, 6, 8, 12, 16 and 24 Port



Module frame 24 port 1HE



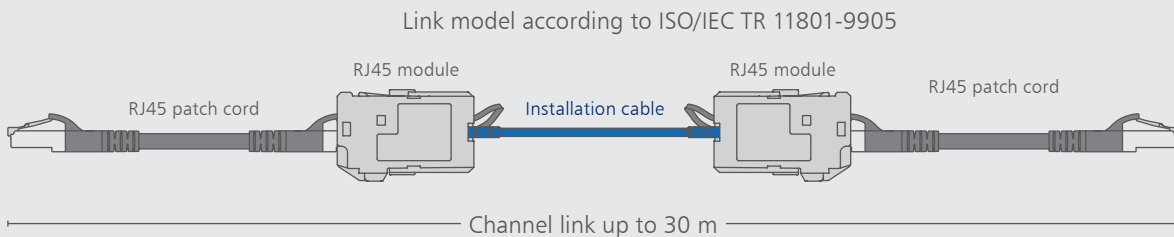
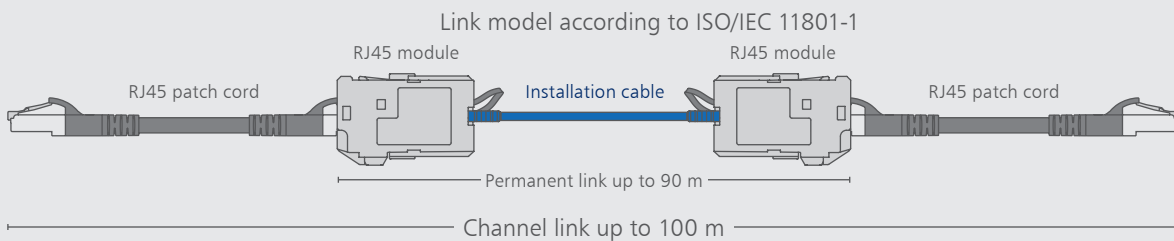
Module frame 48 port 1.5HE



AP outlets and cover plates

High performance

The 25G system demonstrate high performance by meeting the ISO/IEC DTR-11801-9905 for 25GBASE-T according to IEEE802.3bq (channel link up to 30 m) for high performance applications up to 1250MHz bandwidth. Also meeting the ISO/IEC 11801-1 for applications in the range up to 500 MHz bandwidth and 10 GBit Ethernet according to IEEE 802.3an (Class E_A in permanent and channel link up to 100m). The product quality is further enhanced by a robust zinc die-cast housing.



Independent certification

The connection system meets international requirements for future-oriented copper-based data highways.

- > RJ45 according to IEC 60603-7-1
- > GHMT certified according to ISO/IEC DTR-11801-9905 for 25GBaseT in channel link with 30 m
- > GHMT certified according to Class E_A in permanent Link and up to 90 m according to ISO/IEC 11801-1 and DIN EN 50173-1

According to the above standard, the requirements of class E_A are also met in the channel link.

No system without installation and patch cords

The performance of all components is required for 25 GBit high-speed data transmission. This includes not only the connection components but also the installation and patch cables. In our product range we have the suitable installation and patch cables to provide you with the complete and consistent solution from the server to the end device.

GC1300 pro22 Cat.7_A S/FTP LSHF-FR Simplex/Duplex

- > 25/10 GBit installation cable
- > Pair shielded installation cable
Cat.7_A AWG 22 S/FTP
- > Simplex 4 pairs (PiMF) or Duplex 2 x 4 pairs (PiMF)
- > Overall shield: Cu tinned braid, coupling loss \geq 85 dB
- > Applicable standards: EN 50173-1; ISO/IEC 11801-1;
EN 50288-9-1 and IEC 61156-5
- > Flame retardancy: IEC 60332-1; IEC 60332-3-24;
IEC 60754-2 and IEC 61034
- > Standard length: Simplex = 1000 m/Duplex = 500 m on a drum
- > Cable sheath: LSHF-FR (LSOH-FR) – Low Smoke,
Halogen-Free, Flame Retardant
- > Reaction to fire: Class D_{ca} s2d2a1 pursuant to EN 50399
(classification pursuant to EN 13501-6)

P/N	DESCRIPTION
1308427B34142	SIMPLEX 1000 m on a drum
1308427B34143	Duplex 500 m on a drum

Patch cord 25G AWG 26

- > Pair shielded 25G patch cord AWG 26/7, Halogen- Free
- > Two shielded RJ45 plugs, wiring 1 - 1
- > Standard length: 2 m
- > No further standard lengths for 25 GBit possible
- > Class E_A tested pursuant to ISO/IEC 11801-1 and
DIN EN 50173-1
- > Suitable for 25 GBit pursuant to IEEE 802.3bq and 10 GBit
Ethernet pursuant to IEEE 802.3an
- > Anti-kink sleeve sprayed, with integrated
locking lever protection


P/N	DESCRIPTION	P/N	DESCRIPTION
13084G2000-E	black	13084G2066-E	red
13084G2033-E	grey	13084G2077-E	yellow
13084G2044-E	blue	13084G2088-E	white
13084G2055-E	green		


25G RJ45 field plug pro

- > straight (180°) cable feed or variable,
freely selectable (360°)
- > easy assembly – connection without special tools
- > fully shielded and multi-port capable
- > Remote Powering (PoE, PoE plus, UPoE and 4PPoE)
and HDBaseT suitable
- > suitable for 25 GBit/s according to IEEE 802.3bq,
10 GBit/s according to IEEE 802.3an
- > Cat.6_A (4-pair) according to ISO/IEC 11801 Ed.3:2017
- > Compliance with Class I up to 1250MHz, Class E_A
according to ISO/IEC 11801 Ed.3:2017, EN 50173-1:2018
- > Cable sheath diameter from 5.5-10.5 mm
- > Core connection stranded conductor AWG 27/7-22/7,
0.43-0.76 mm
- > Core connection solid wire AWG 26/1-22/1, 0.4-0.64 mm
- > Wire diameter up to 1.6 mm

P/N	VARIANT	DESCRIPTION
130G405032-E	180°	25G RJ45 field plug pro
130G405042-E	360°	25G RJ45 field plug pro 360

Order matrix

25Gmodul	MODUL DESIGN			
25Gmodul package	 Individual module package 25Gmodul 130B11-25-E		12 unit module package 25Gmodul 130B11-25-Z	
19 inch module frame unequipped	1HE, Alu/light grey 130920-00-E	1HE, stainless steel 130921-00-E	1.5HE 48 port, stainless steel 130924-00-E	1HE, black 130920-BK-E PM-System 13PP11B-E
Module module frame unequipped	3HE, 7 TE 6 port stainless steel 130B10E2E-E			
DCCS2 component unequipped	4 Ports 130D2CBU4-E			
Wall outlets unequipped	AP 1 Port 130B10D10002-E 2 Port 130B10D20002-E 3 Port 130B10D30002-E	UP 1 Port 1309141002-E 2 Port 1309151002-E 3 Port 1309161002-E	UPk 1 Port 1309141102-E 2 Port 1309151102-E 3 Port 1309161102-E	UPO 1 Port 1309141200-E 2 Port 1309151200-E 3 Port 1309141200-E
DIN rail installation REGplus unequipped	Module REGplus IP20 1309427103-E			
Wall-mount housing unequipped	3 Port 130861-0302-E 4 Port 130861-0402-E	6 Port 130861-0602-E 8 Port 130861-0802-E	12 Port 130861-1202-E 16 Port 130861-1602-E	24 Port 130861-2402-E
Underfloor installation unequipped X = Port number	Subway underfloor unit GB2, 3, 6, 9 port 1309350X01-E			Subway underfloor unit GB3, 03, 06, 09, 12 port 130936XX01-E

25Gmodul K	KEYSTONE DESIGN			
25Gmodul K package	 Individual module package 25Gmodul K 130B21-25-E		12 unit module package 25Gmodul K 130B21-25-Z	
19 inch keystone module frame 1HE, unequipped	Alu/light grey 130920-00KE	light grey 130926-0003KE 130926A0003KE	Stainless steel 130A21-00-E	black 130920-BKKE 130926-0029KE 130926A0029KE
Keystone module frame unequipped	3HE, 7 TE, 6 port stainless steel 130B20E2E-E			
DCCS2 component unequipped	4 Ports keystone 130D2CKU4-E			
Wall outlets keystone unequipped	AP 1 Port 130B20D10002KE 2 Port 130B20D20002KE 3 Port 130B20D30002KE	UP 1 Port 130B20D11002KE 2 Port 130B20D21002KE 3 Port 130B20D31002KE	UPk 1 Port 130B20D11102KE 2 Port 130B20D21102KE 3 Port 130B20D31102KE	UPO 1Port 130B20D11200KE 2Port 130B20D21200KE 3Port 130B20D31200KE
DIN rail installation REGplus unequipped	REGplus IP20 1309428103-E			
Wall-mount housing empty	3 Port 130861-0302KE 4 Port 130861-0402KE	6 Port 130861-0602KE 8 Port 130861-0802KE	12 Port 130861-1202KE 16 Port 130861-1602KE	24 Port 130861-2402KE
Underfloor installation keystone unequipped X = port number	Subway keystone Underfloor unit GB2 3, 6, 9 Port 130B20S50X01-E			Subway keystone Underfloor unit GB3 03, 06, 09, 12 Port 130B20S6XX01-E

METZ CONNECT GmbH is a member of the following organizations and associations.



METZ CONNECT GmbH

Im Tal 2
78176 Blumberg
Germany

Phone +49 7702 533-0
Fax +49 7702 533-189

info@metz-connect.com
www.metz-connect.com

METZ CONNECT USA Inc.

200 Tornillo Way
Tinton Falls, NJ 07712
USA

Phone +1-732-389-1300
Fax +1-732-389-9066

METZ CONNECT France SAS

28, Rue Schweighaeuser
67000 Strasbourg
France

Phone +33 3886 170 73
Fax +33 3886 194 73

METZ CONNECT Austria GmbH

c/o German chamber of commerce
in Austria

Schwarzenbergplatz 5, Top 3/1
1030 Vienna
Austria

Phone +43 1 227 12 64
Fax +43 1 227 12 66

METZ CONNECT Zhongshan Ltd.

Ping Chang Road
Ping Pu Industrial Park
Sanxiang Town
Zhongshan City, 528463
Guangdong Province
China

Phone +86 760 86365 055
Fax +86 760 86365 050

METZ CONNECT Asia Pacific Ltd.

Suite 1803, 18/F
Chinachem Hollywood Centre,
1 Hollywood Road, Central
Hong Kong

Phone +852 26 027 300
Fax +852 27 257 522

