

Recycle Disassemble Instruction (Dismantled Information)

Requirements according to ANNEX VII of DIRECTIVE 2012/19/EU
on waste electrical and electronic equipment (WEEE)

Materials and components with hazardous content








LCDs may contain hazardous substances like Pb and BFRs which are covered by exemptions under the RoHS directive. However, the majority is present in the printed circuit boards assembly. In order to reduce emissions as much as possible, a complete disposal of the old appliance is required. This treatment may only be performed in authorized handling plants.

Product Name: Interactive flat panel

Model No.: ST5502S

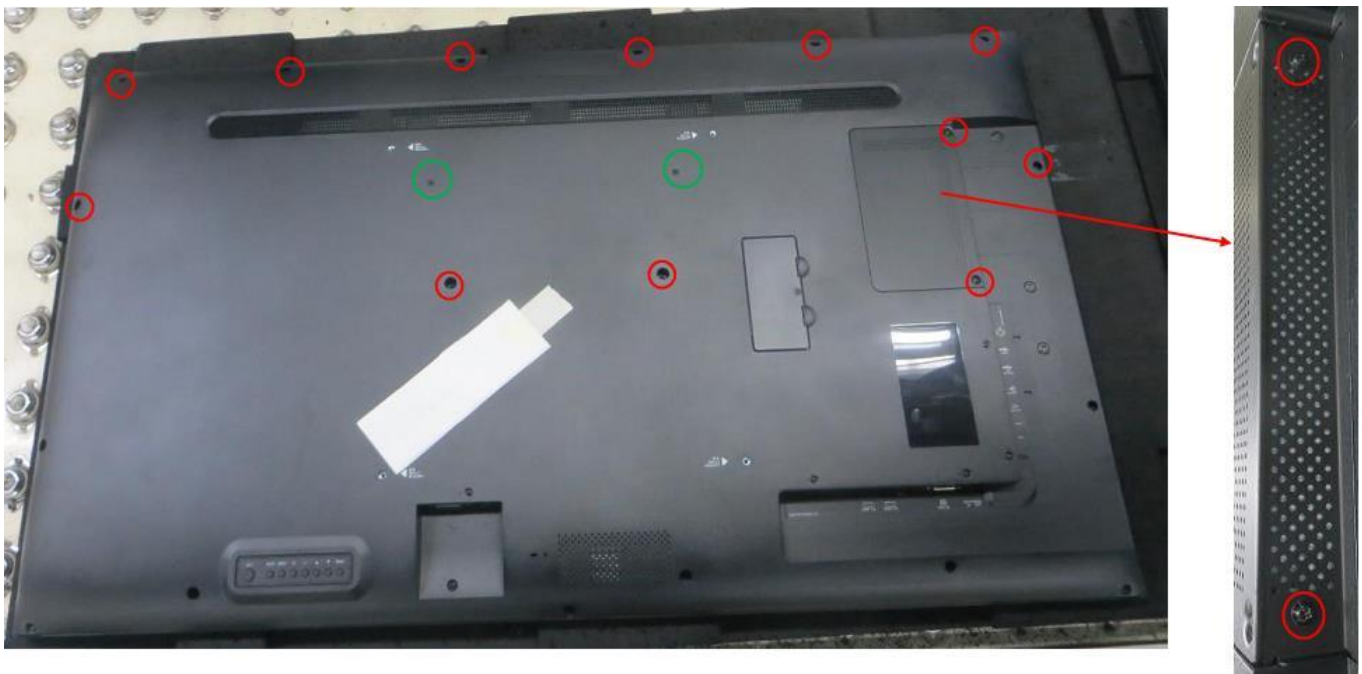


Disassembly Tools

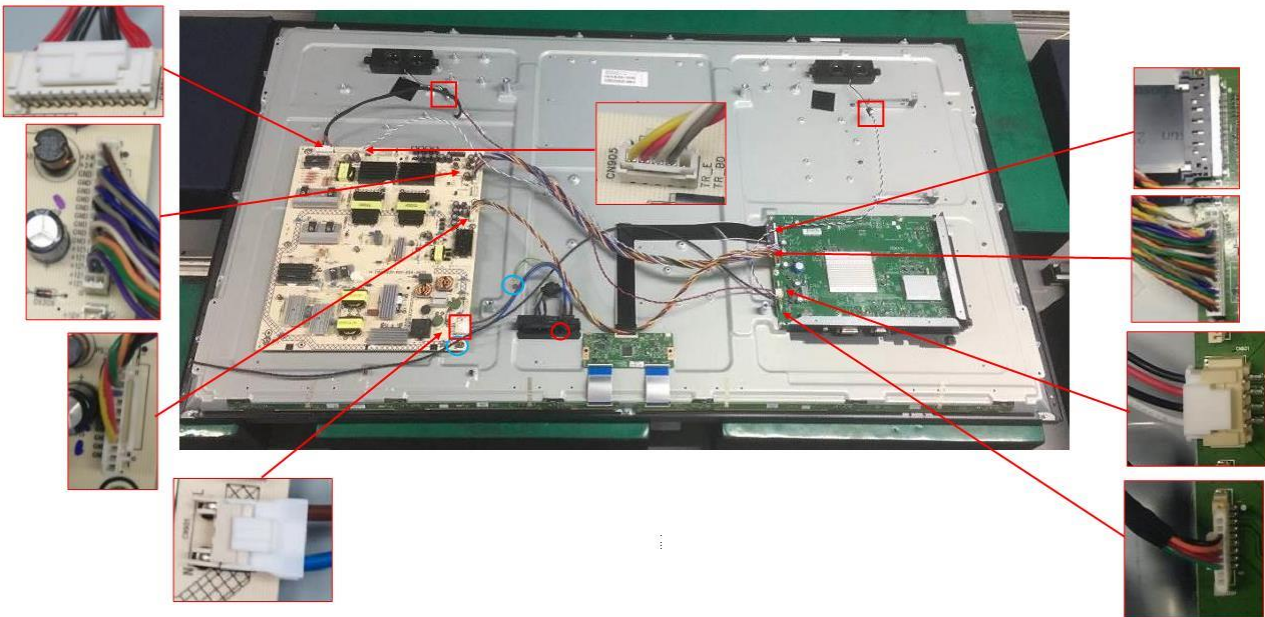
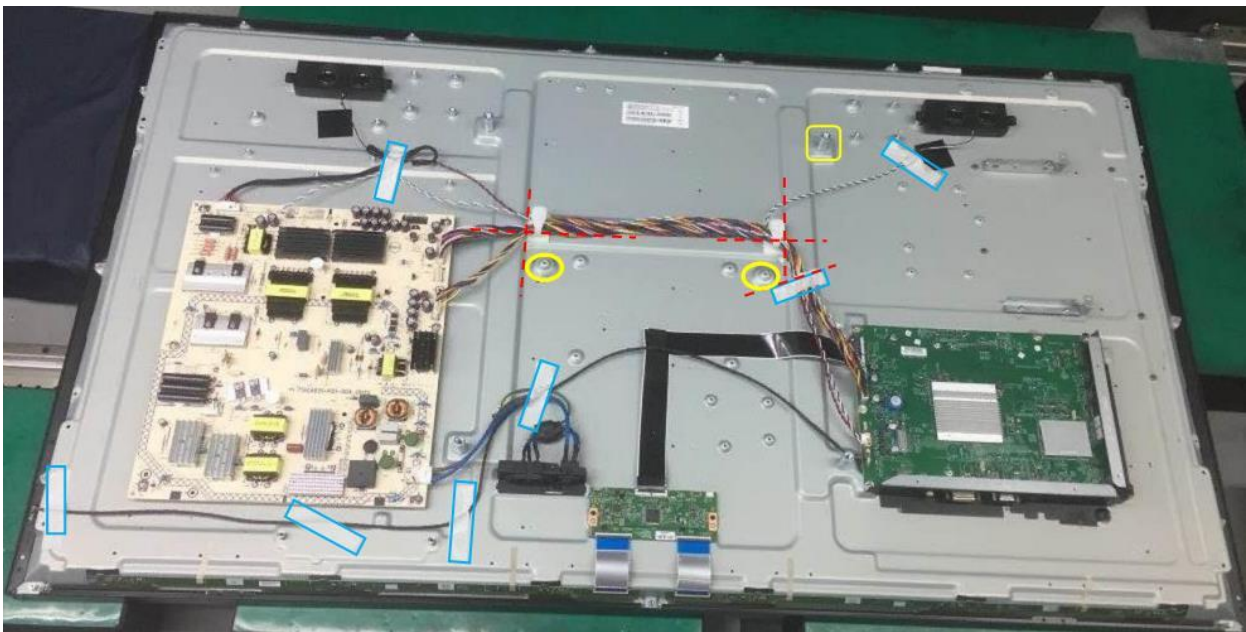
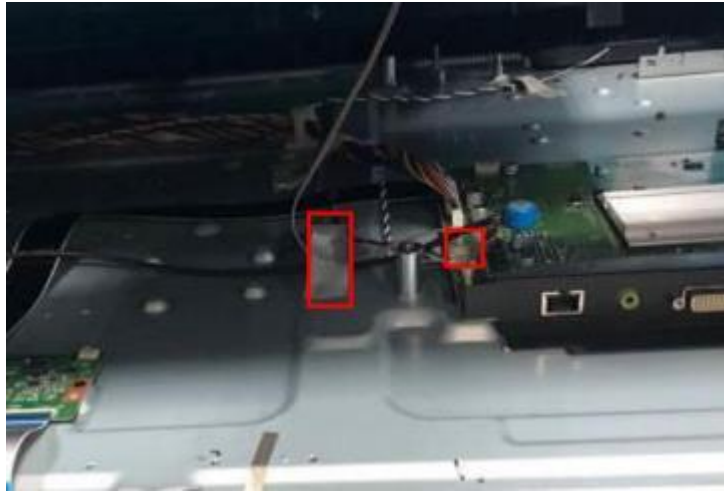
Tool	picture
Philips Screwdriver for M3 screw	
nosed pliers	
Diagonal Cutting Pliers	
Slotted screwdriver	
Six Point Sockets	
Philips Screwdriver for M2.5 screw	
knife	

Disassembly process

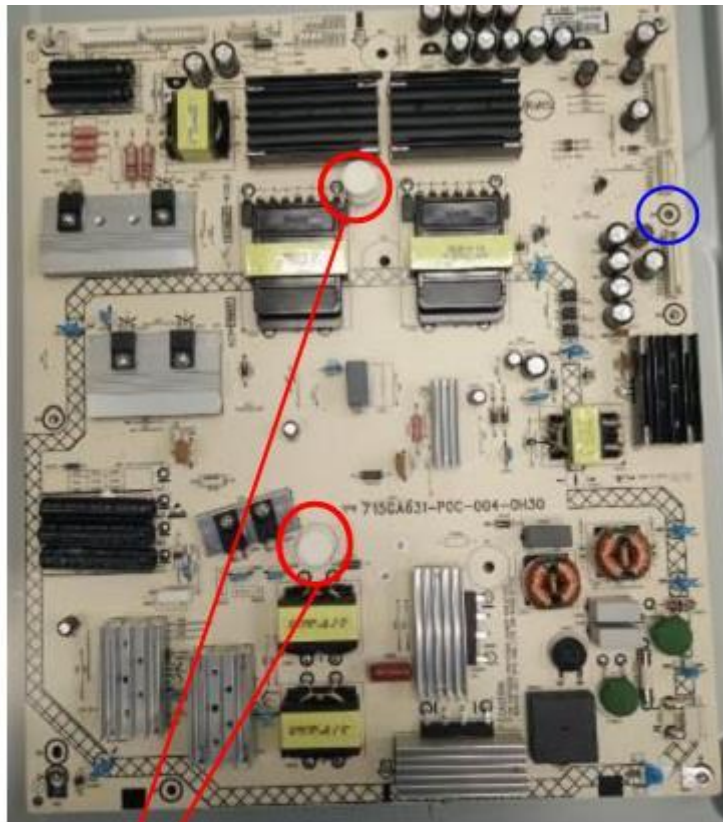
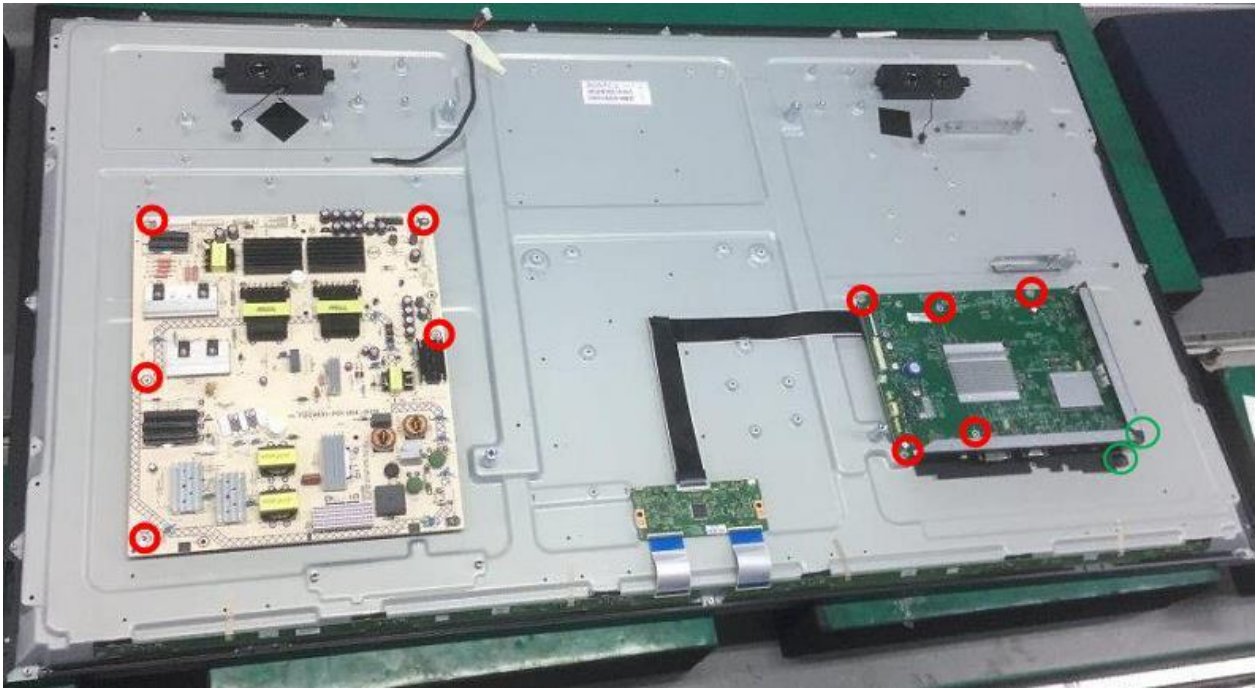
(1) Remove the rear cover, OPS_COVER and COVER_SERVICE.

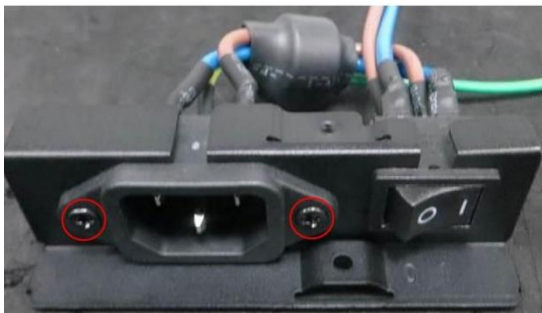


(2) Remove all the tapes and the pins.

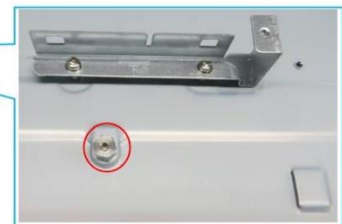


(3) Remove the boards and the PCB-SUPPORT.

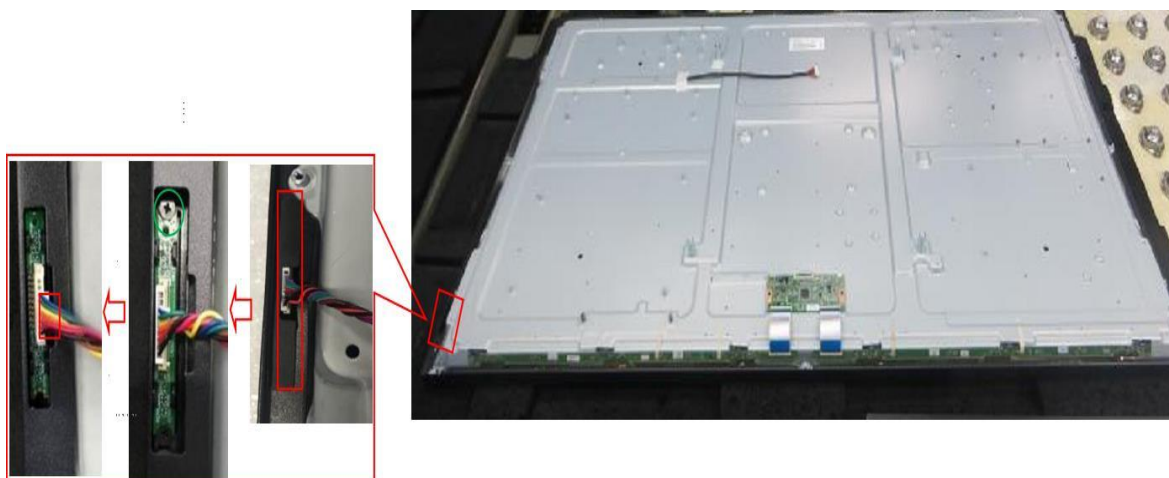




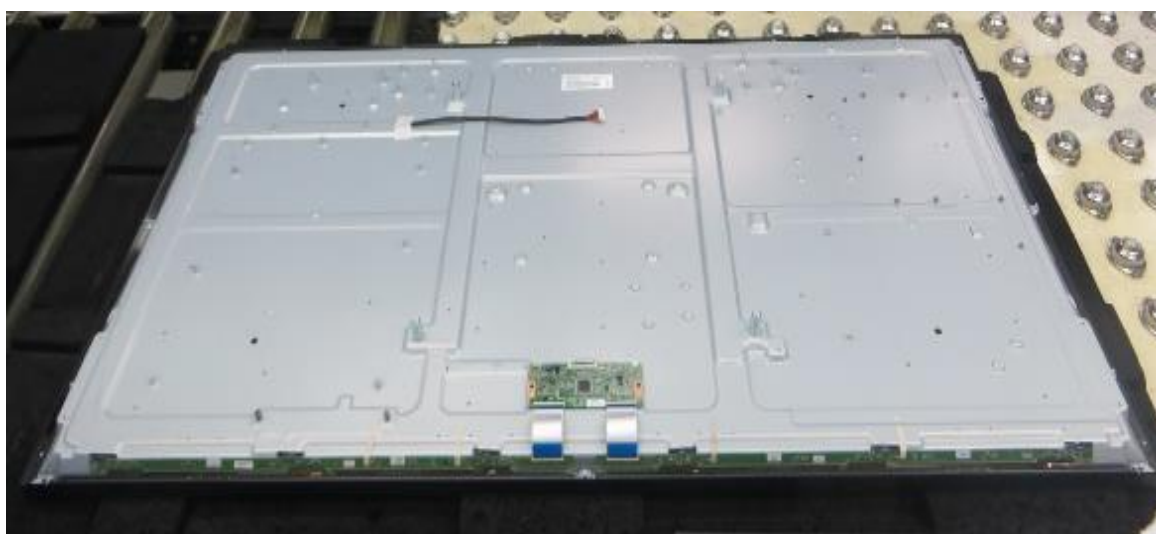
(4) Remove the screws to remove the BKT and the Speake. Disconnect the pin and the Mylar.



(5) Remove the IR board.

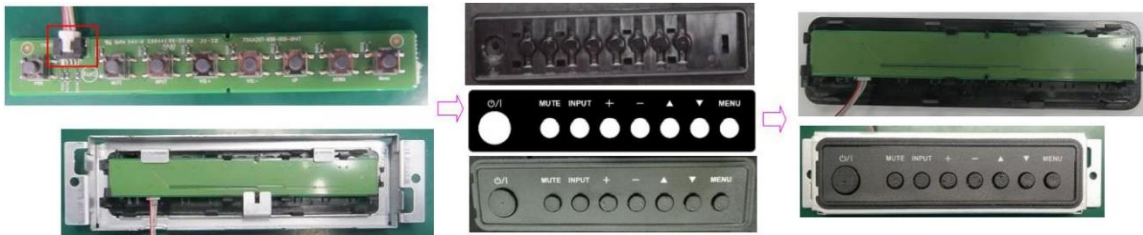
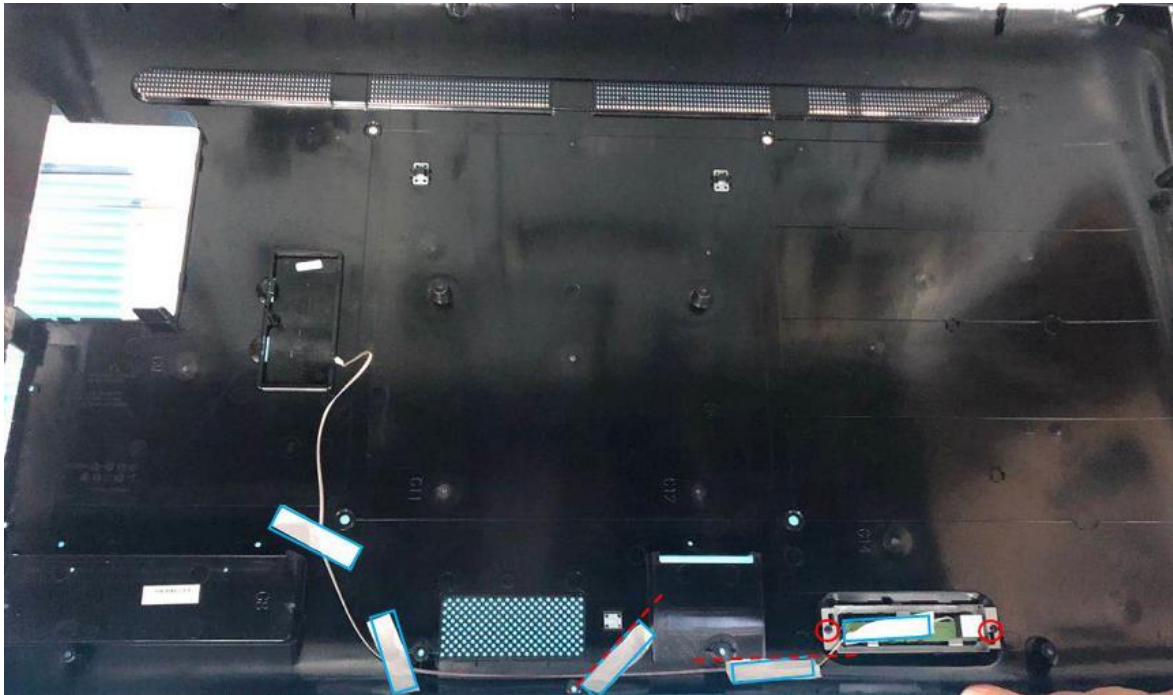


(6) The panel





(7) Remove the key board.



Disassembly Time

Total time: about 35 minutes