



**4th GEN.
CPU READY**

The EVGA X79 Dark is a reimagined EVGA X79 platform. Built from the ground up this motherboard has a number of firsts, creating a landmark platform for PC enthusiasts everywhere.

It starts with a full 12 Layer PCB, improving overall overclock stability and PCB cooling. The memory trace layout is optimized for compatibility, improved overclocking and full 8 DIMM memory support. The CPU VRM is redesigned, using the best industry IR power stages, for efficient power to your CPU. The PCI-E layout is improved, better lane distribution for better performance + PCI-E 3.0 compatibility, and 4-Way SLI support in E-ATX form factor. A slew of great onboard devices including additional 4 Port SATA 6G controller for a total of 6 SATA 6G ports, Dual Intel Gigabit LAN's and a USB 3.0 controller for a total of 6 USB 3.0 devices.

The GUI BIOS has been completely redesigned. This brand new GUI BIOS from EVGA was focused on functionality so you can get in, and get out. No splash screens to click through, no enormous menus to scroll through, no steep learning curve. The way a modern BIOS should be.

KEY SPECS

- Supports Intel® Core™ i7 Processor family for LGA-2011 socket
- Intel® X79 Chipset
- Enthusiast Layout Supporting 2-Way SLI®, 3-Way SLI®, 4-Way SLI® & CrossfireX™
- 8 DIMM Quad-Channel DDR3 2400MHz+ (Up To 64GB)
- PCI Express® 3.0 Ready
- 5 PCI Express® Graphics Expansion Slots
- 1 PCI Express® x4 slot
- 10 USB 2.0 Ports (six rear panel, four onboard)
- 6 USB 3.0 Ports (four rear panel, two onboard)
- Supports Bluetooth V2.1
- 6 SATA III/6G Ports
- 4 SATA II/3G Ports (2 E-SATA)
- 2 Intel Gigabit Ethernet Ports (10/100/1000)
- 8 Channel High Definition Audio + Optical
- E-ATX Form Factor

DESIGN DETAILS

Supported CPUs - Intel® Core™ i7 Socket 2011
Socket Type - LGA2011

PCH - Intel® X79

DIMM QTY - 8 DIMM Slots
Memory Type - DDR3 800/1066/1333/1600/1866/2133/2400MHz+
Memory Capacity - 64GB

SATA II 3.0Gb/s Ports/Controller - 4 / X79 PCH
SATA III 6.0Gb/s Ports/Controller - 2 / X79 PCH - 4 / Marvell 9230
E-SATA 3.0Gb/s Ports/Controller - 2 / Marvell 9172
RAID Support - RAID 0, 1, 5, 10, JBOD

USB 2.0 Ports/Controller - 10 / Intel® X79 PCH
USB 3.0 Ports/Controller - 6 / Asmedia ASM1042

Network Speed - 10/100/1000
Network Ports/Controller - 2 / Intel 82579/82574

Audio - 8 Channel HD Audio
Audio Controller - Realtek ALC898

PCI-E Slot Arrangement - 1x16, 2x16, 3x8 or 4x8
PCI-E x16 Mechanical Slots - 5
PCI-E x4 Slots - 1

BIOS Type - AMI / UEFI
Software - EVGA E-LEET Tuning Utility

Fan Headers - 6

DIMENSIONS

- Width: 10.375in – 263.5mm
- Length: 12in – 304.8mm
- Form Factor: E-ATX

ACCESSORIES

- EVGA Driver Installation Disc with EVGA E-LEET
- Rear Case I/O Panel
- Rear Case I/O Cover
- 2 SATA 3G Data Cables
- 2 SATA 6G Data Cables
- 2 SATA Power Adapters
- 2-way SLI Bridge
- 3-way SLI Bridge
- 4-way SLI Bridge
- 4 GPU Link Cable
- 2 Port USB 3.0 Bracket
- 4 Port USB 2.0 Bracket
- LGA1366 Backplate
- Visual Installation Guide
- Manual



PRODUCT WARRANTY

This product is covered under EVGA's 3 year warranty which covers parts and labor. Further warranty extension is available upon registration within 30 days of purchase. For more details please visit www.evga.com/warranty



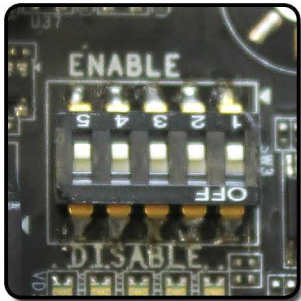
BRAND NEW GUI BIOS INTERFACE

Focused on functionality



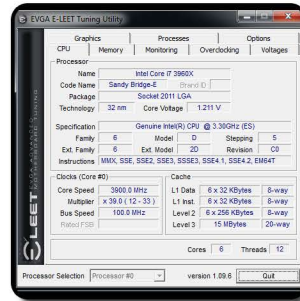
PCI-E DISABLE SWITCH

Quickly and easily troubleshoot!



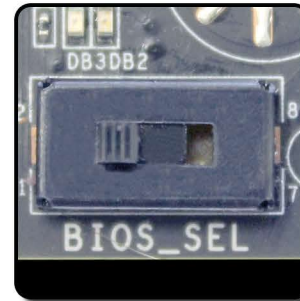
E-LEET TUNING UTILITY

Adjust your overclocking in 0.5.



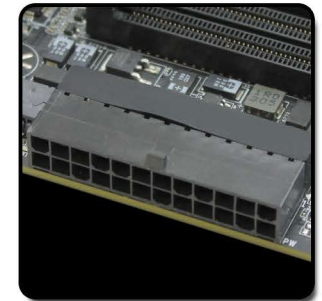
TRIPLE BIOS SUPPORT

Use 3 separate profiles!



RIGHT ANGLED 24 PIN

Improved cable management



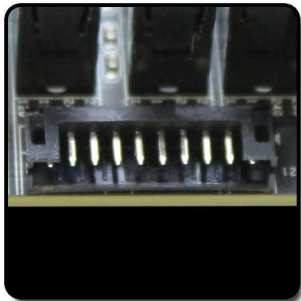
ONBOARD BLUETOOTH

Wireless input and data connection



EZ VOLTAGE READ POINTS

Easy read dedicated read points



ONBOARD CPU TEMP MONITOR

Monitor CPU temps quickly & easily



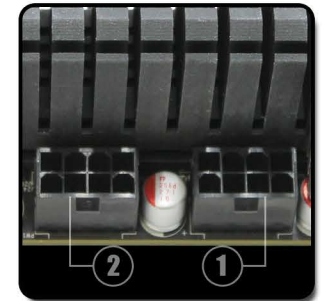
PASSIVE CHIPSET HEATSINK

No fans, lower noise, longer lifespan



DUAL 8 PIN CPU POWER

Optional 8 pin provides up to 600w



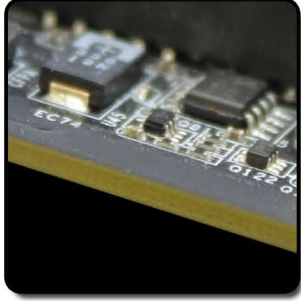
12 PHASE PWM

Cleanest variable power switching



12 LAYER PCB

Improved overclock stability and PCB cooling



HIGHER GOLD CONTENT

Lower inductance, better power delivery!



PRODUCT WARRANTY

This product is covered under EVGA's 3 year warranty which covers parts and labor. Further warranty extension is available upon registration within 30 days of purchase. For more details please visit www.evga.com/warranty

