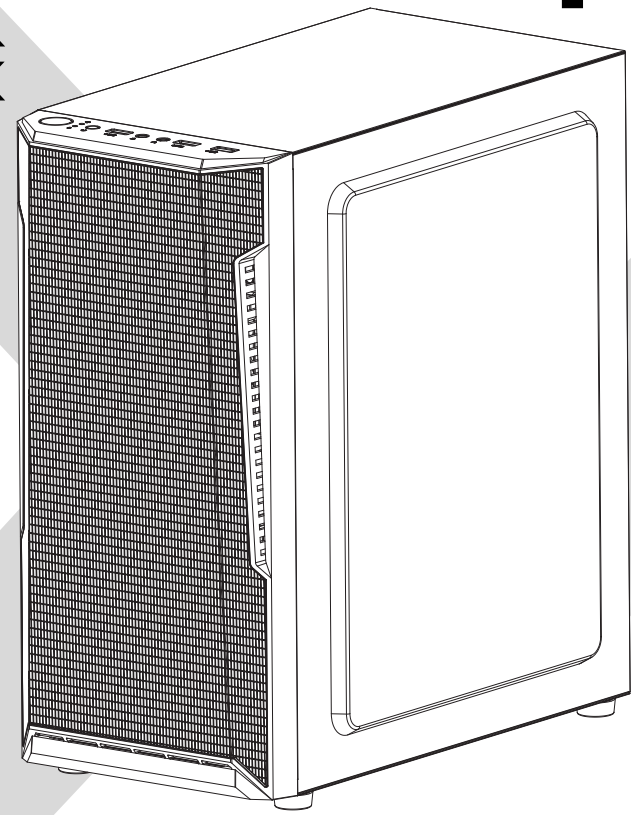
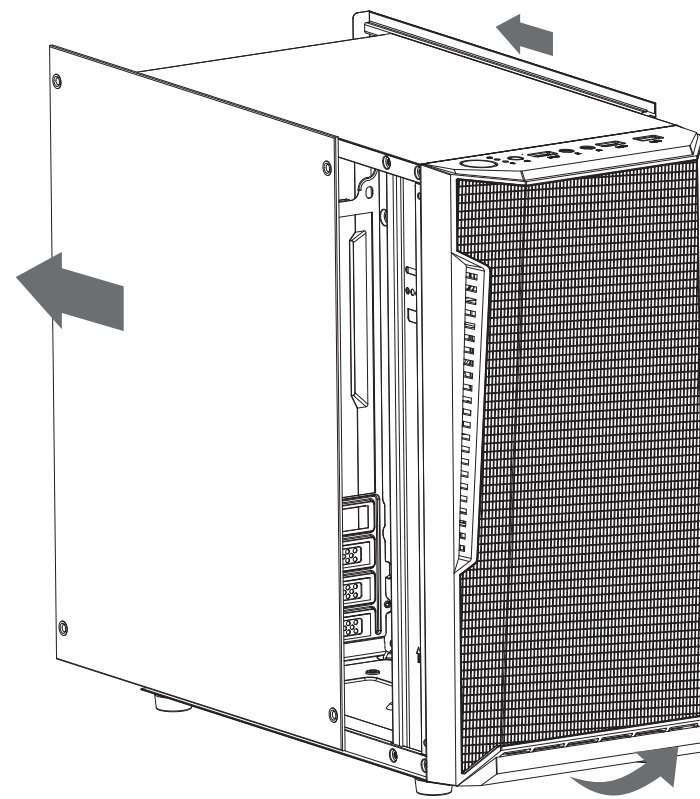


X
KRUX

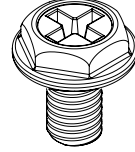
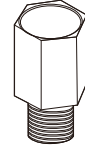
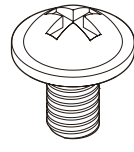
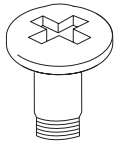
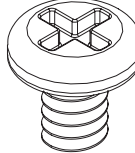
TREK
KRX0015



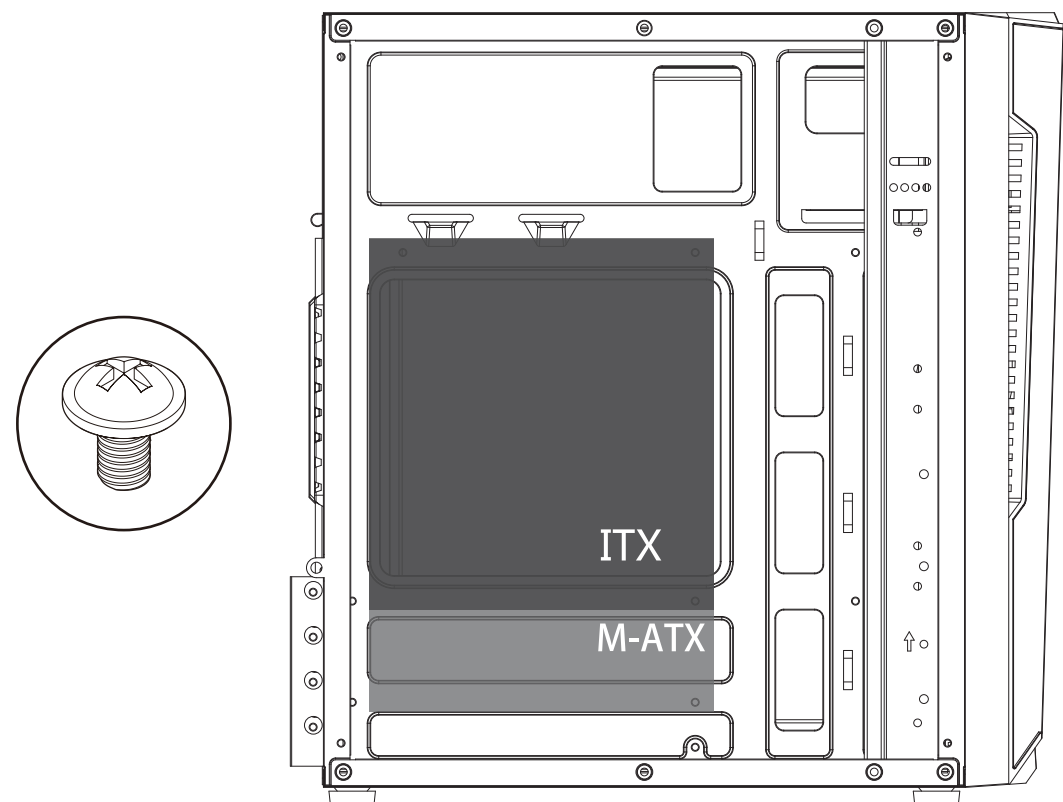
1 REMOVAL OF PANELS



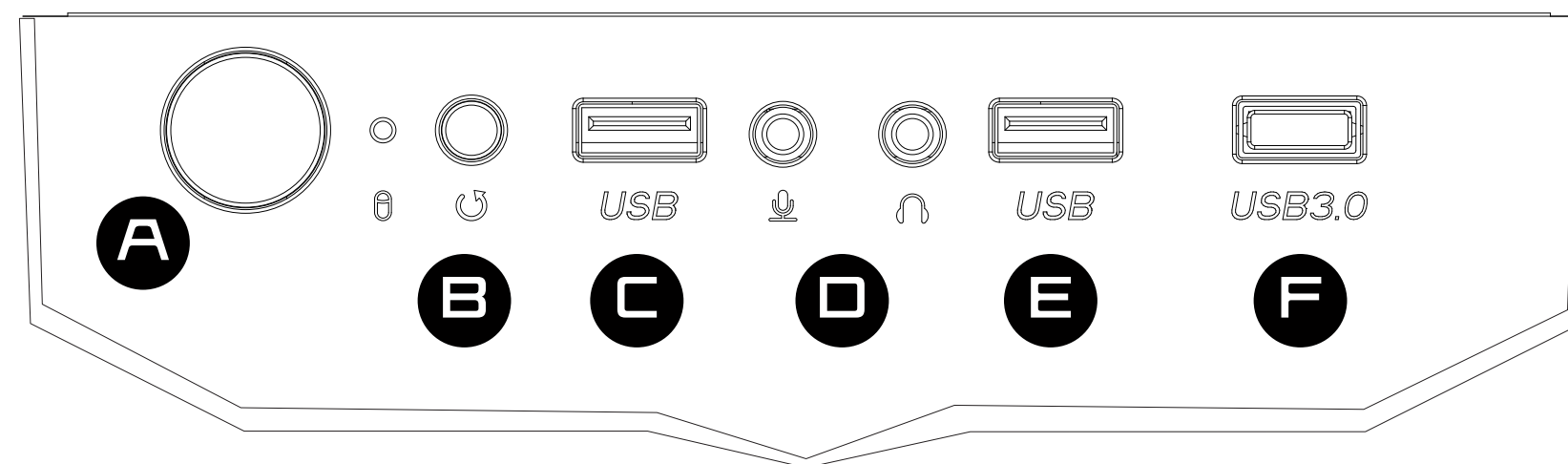
ACCESSORY PACKET CONTENTS:

 x6	 x2	 x12	 x2
 x6			

2 MOTHERBOARD INSTALLATION

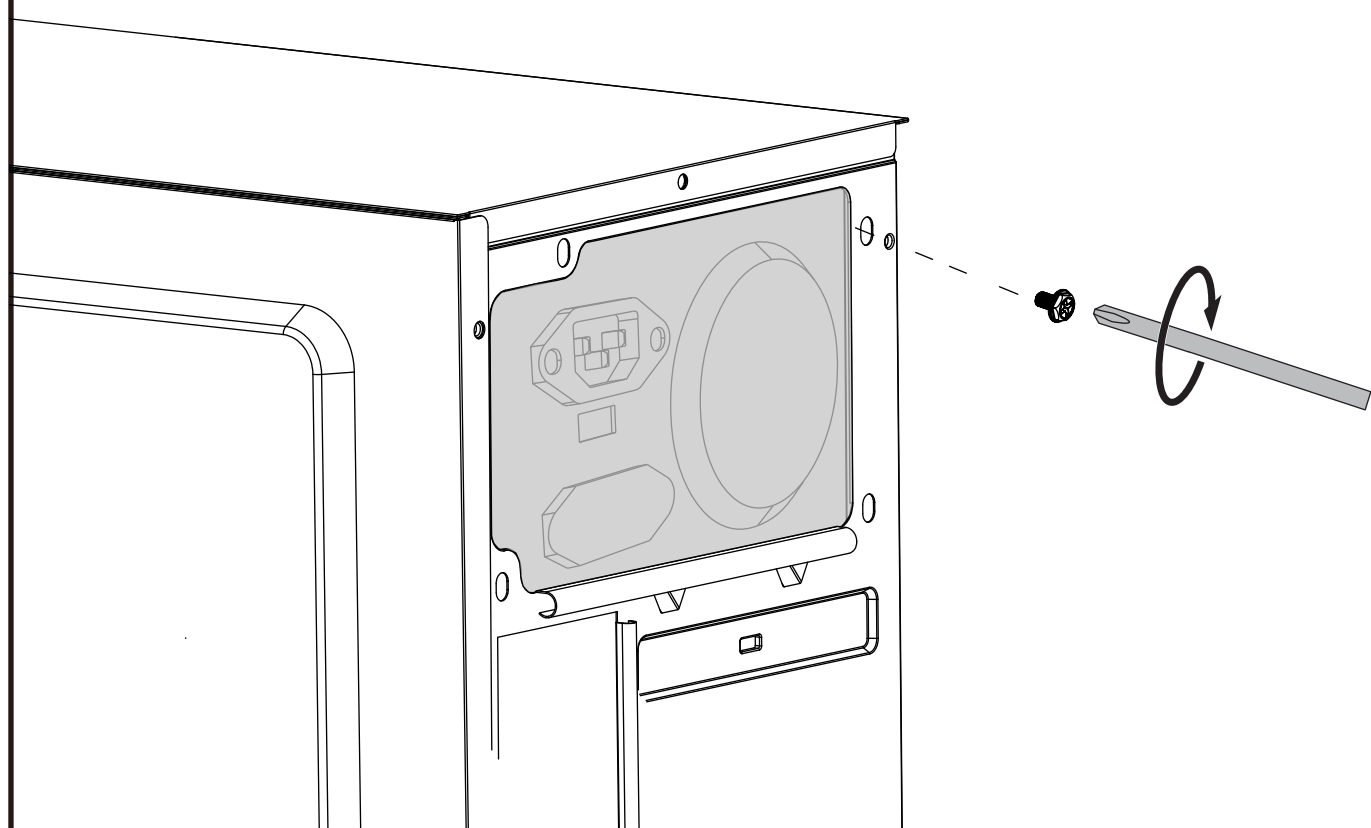


I/O PANEL



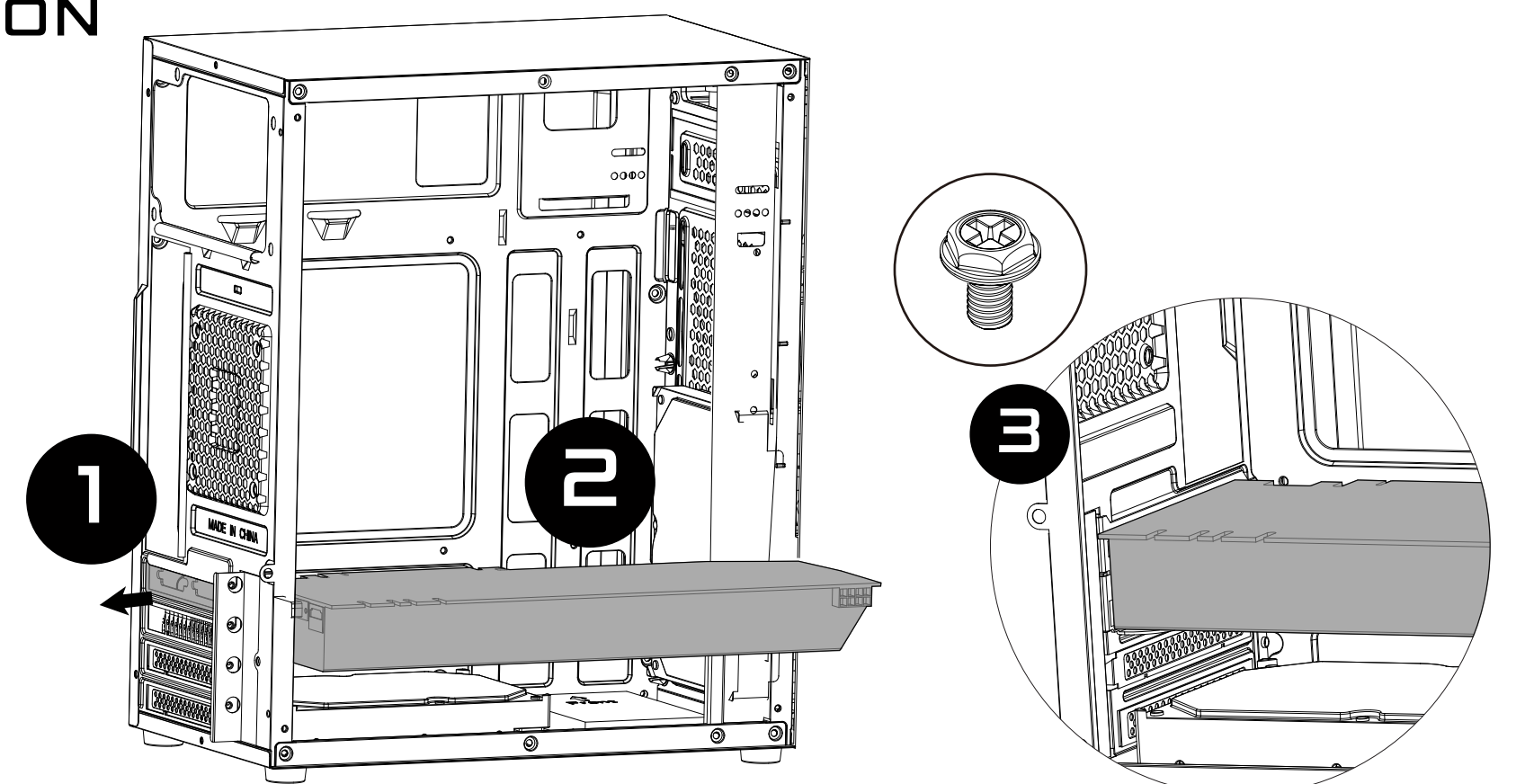
- A - POWER
- B - RESET
- C - USB 2.0
- D - MIC & HEADPHONE
- E - USB 2.0
- F - USB 3.0

3 POWER SUPPLY INSTALLATION



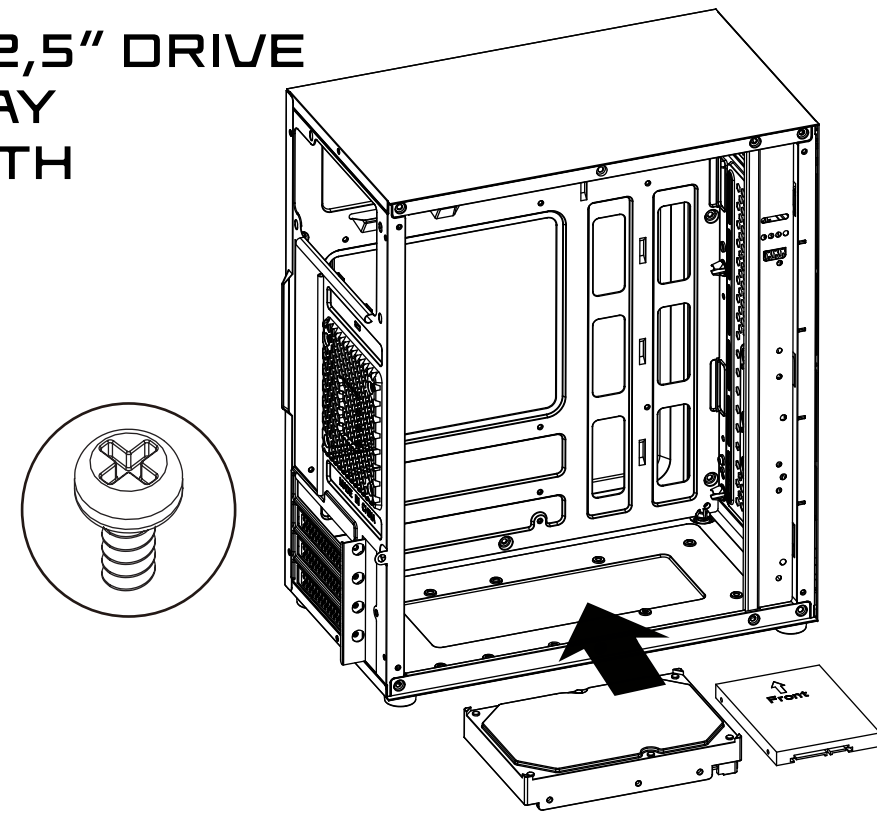
4 ADD-ON CARD INSTALLATION

- 1 - BEND ADD-ON CARD COVER
- 2 - SLIDE PCI-E CARD INTO POSITION
- 3 - SECURE PCI-E CARD WITH ADD-ON SCREW



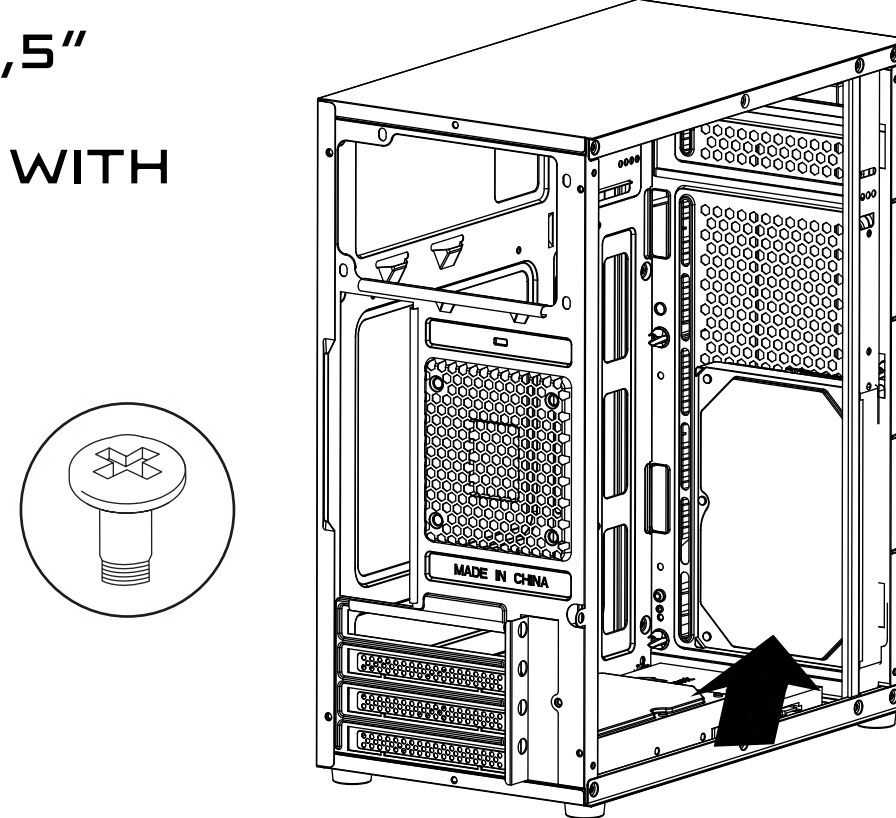
5 3,5' HDD INSTALLATION

- 1 - SLIDE 3,5", 2,5" DRIVE INTO THE BAY
- 2 - SECURE WITH SCREWS

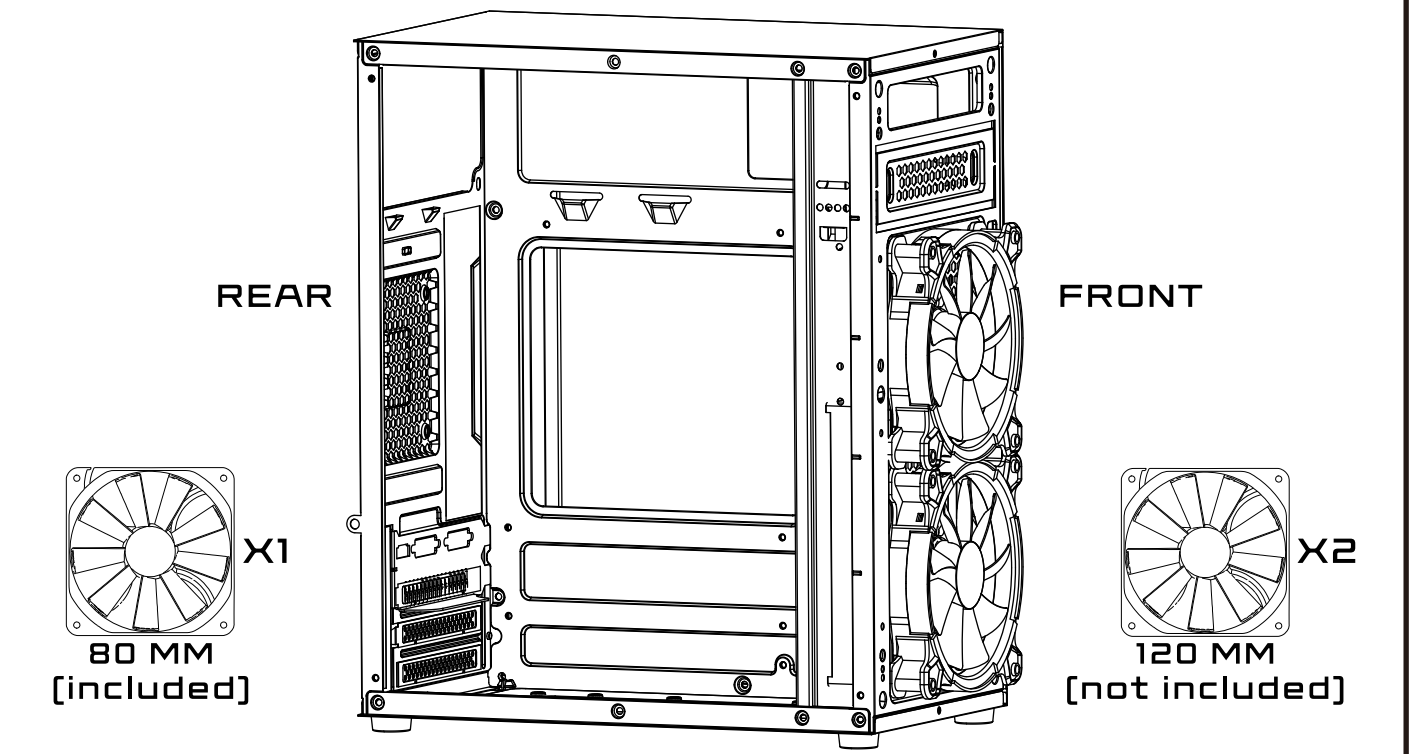


6 2,5' SSD INSTALLATION

- 1 - PLACE 3,5" DRIVE IN
- 2 - SECURE WITH SCREWS



7 FRONT/REAR FAN INSTALLATION



WWW.KRUX.TECH