

**USB 3.0 Dual Display Docking Station  
CSV-3242HD**



Table of Contents	
SAFETY INSTRUCTIONS	1
COPYRIGHT	1
TRADEMARKS	1
INTRODUCTION	2
FEATURES	3
PACKAGE CONTENTS	3
SYSTEM REQUIREMENTS	4
PRODUCT OVERVIEW	5
FRONT	5
REAR	8
INSTALLATION	10
DISPLAY CONFIGURATION	19
DESCRIPTION OF THE SETTINGS	20
EXTENDED MODE	25
CURSOR DISAPPEARED	25
VIDEO PLAYBACK IN EXTENDED MODE	26
MIRROR MODE	26
BE THE PRIMARY MONITOR	27
WINDOWS SHORTCUT	27
AUDIO CONFIGURATION	29

UNINSTALL THE DRIVER	30
SPECIFICATION	32
REGULATORY COMPLIANCE	34
FCC CONDITIONS	34
CE	34
WEEE INFORMATION	34

Before attempting to connect, operate or adjust this product, please save and read the User's Manual completely. The style of the product shown in this User's Manual may be different from the actual unit due to various models.

### **Safety Instructions**

Always read the safety instructions carefully:

- Keep this User's Manual for future reference
- Keep this equipment away from humidity
- If any of the following situation arises, get the equipment checked by a service technician:
  - The equipment has been exposed to moisture.
  - The equipment has been dropped and damaged.
  - The equipment has obvious sign of breakage.
  - The equipment has not been working well or cannot get it to work according to the User's Manual.

### **Copyright**

This document contains proprietary information protected by copyright. All right are reserved. No part of this manual may be reproduced by any mechanical, electronic or other means, in any form, without prior written permission of the manufacturer.

### **Trademarks**

All trademarks and registered trademarks are the property of their respective owners or companies.

## **Introduction**

The USB 3.0 Dual Display Docking Station is designed for extra connectivity demands. With the docking station, you can extend the connection of a computer to more USB peripherals, Ethernet network, the speaker and the microphone through one single USB cable.

With the built-in USB 3.0 ports, the docking station enables you to enjoy the super speed data transmission between USB peripherals. Aside from USB 3.0, this product is compliant with USB 1.1/2.0 specification. You will be able to keep and use your USB 1.1/2.0 devices as usual. In addition, the docking station is equipped with video output.

With the DVI and HDMI ports (HDMI only available for Dual Display Model), you can mirror your primary screen, or extend the Window desktop allowing visibility of more applications at the same time. Enhanced expansion capability plus the stylish appearance, this docking station with video is the most versatile accessory that also complements your home or office space.

Incorporates HDMI® technology.

## **Features**

- Compatible with USB 3.0/2.0 specification
- Resolution up to 2048x1152
- Support audio 2.1 channel
- Support Gigabit Ethernet
- Support HDMI (Dual Display Model only)
- Support BC1.2 charging (Front x1)

## **Package Contents**

- Docking Station x1
- USB 3.0 Cable x1
- Power Adapter x1
- CD (Driver and User's Manual) x1

## **System Requirements**

The minimum requirements for the PC are:

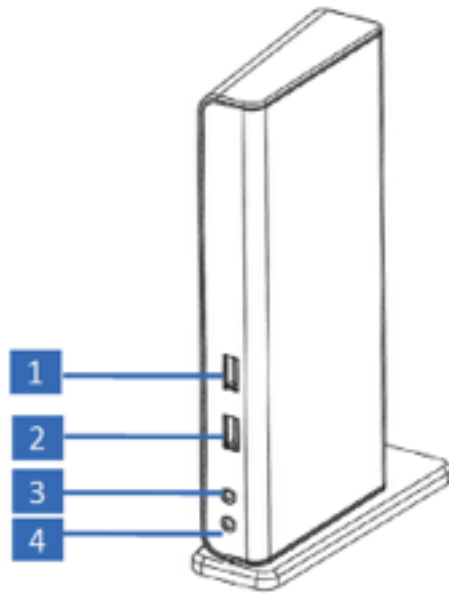
- CPU: 1.6GHz single core or higher processor clock.
  - Intel Pentium/Celeron family
  - AMD K6/Athlon/Duron family, or compatible processor
- RAM: 1GB or above
- USB port: 2.0/3.0
- 30MB of available disk space
- Operating Systems:
  - Microsoft: Windows®7/ Windows®8/ Windows®8.1
  - Apple: Mac® OS 10.9

To play DVD on the extra connected monitor through docking station, in addition to the requirements above, the following requirements should also be met:

- With dual core CPU at 2.0 GHz processor clock

## Product Overview

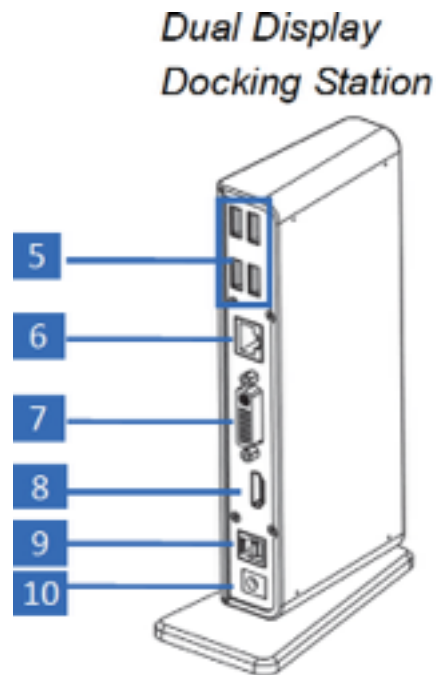
Front



Item		Description
1	USB 3.0 Port	Connect to USB 3.0 devices
2	USB 3.0 Port	Connect to USB 3.0 devices With BC 1.2 charging
3	Speaker Jack	Connect to a speaker or earphone
4	MIC Jack	Connect to a microphone



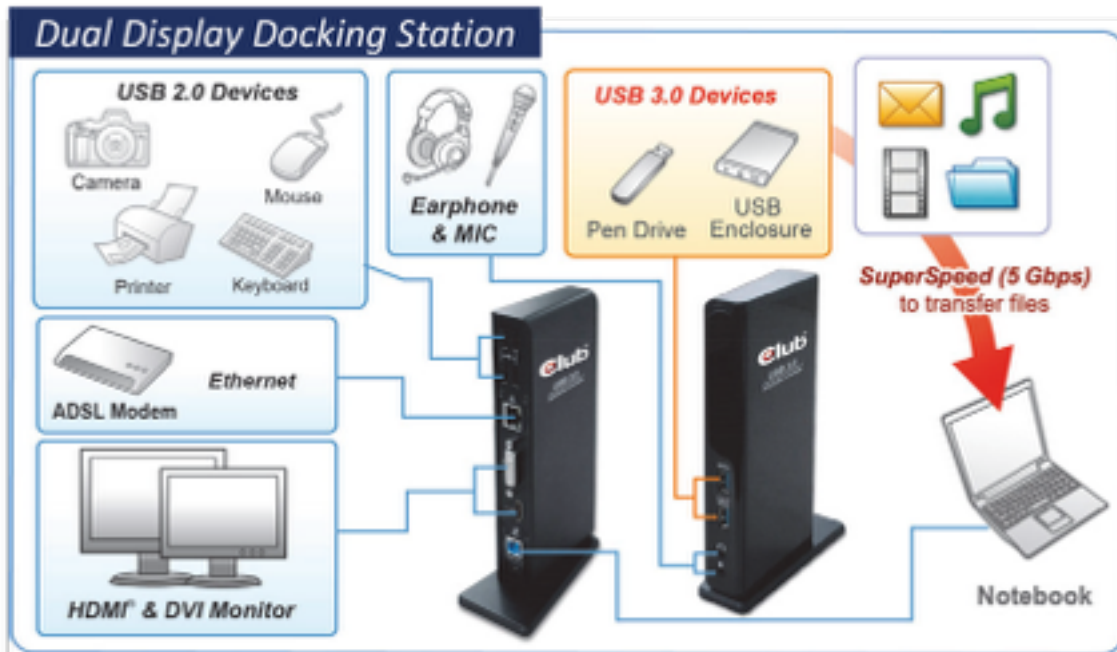
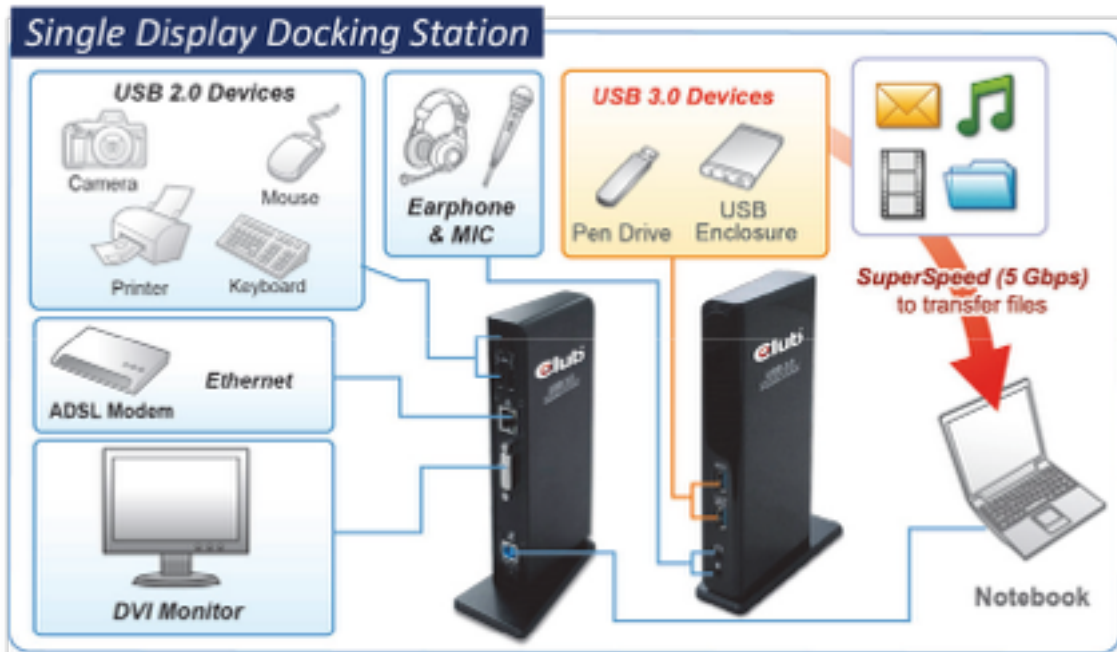
## Rear



Item	Description
5	USB 2.0 port Connect to USB 2.0 devices
6	RJ45 port Connect to an Ethernet
7	DVI connector Connect to a DVI monitor or projector
8	HDMI connector Connect to a HDMI monitor or projector
9	USB 3.0 port (TypeB) Connect to a computer
10	Power jack Connect to the power adapter

## Connection

To connect the USB peripherals, Ethernet, speaker and microphone, follow the illustrations below to connect the corresponding connectors.



## Installation

**Caution: DO NOT connect the docking to a computer before installing the provided driver.**

Note that the following strings and screen shots shown on this user's manual may vary slightly from each operation.

Windows®7/ Windows®8/ Windows®8.1

1. Insert the supplied driver CD into a computer's CD/DVD- ROM.
2. Click Run Setup.exe to start the installation.

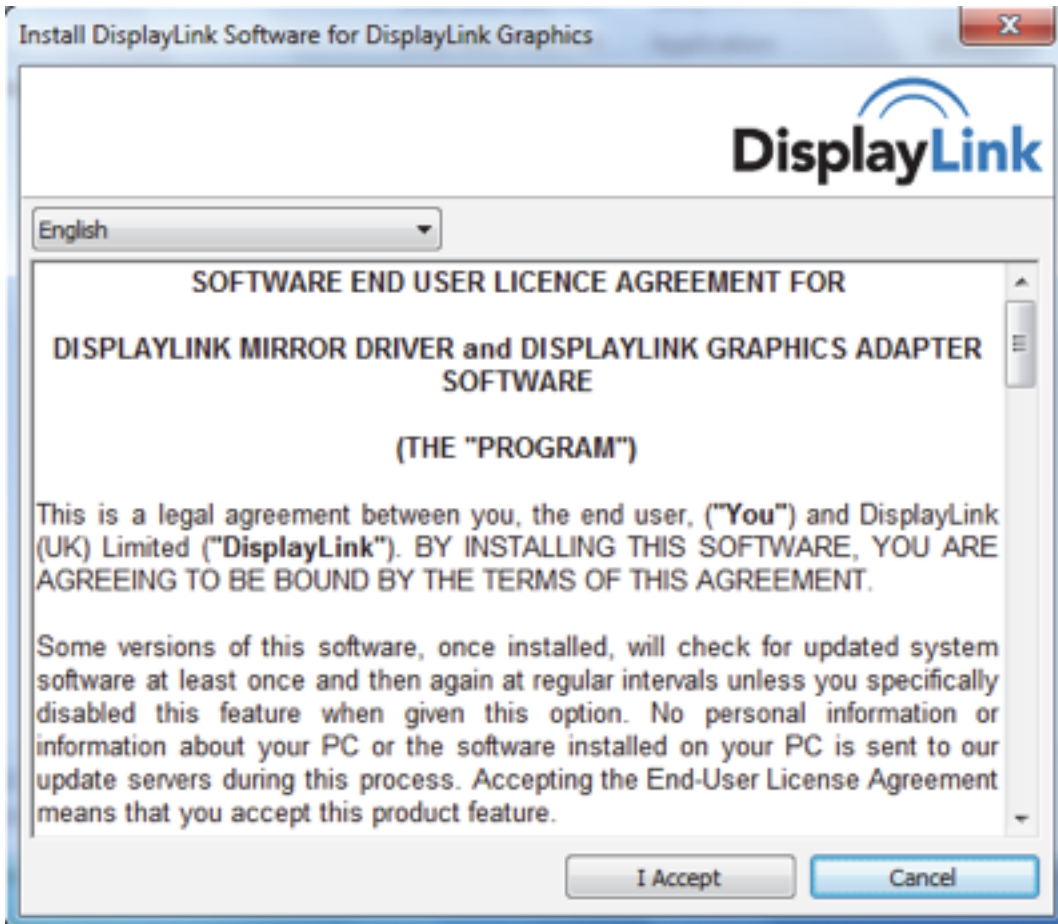


**NOTE:**

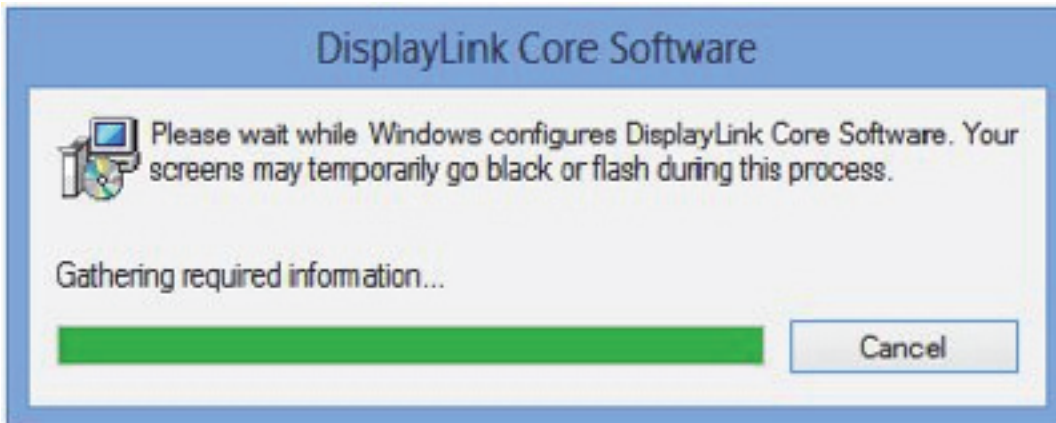
If the AutoPlay does not appear automatically, locate and double-click on the Setup.exe file in the driver folder to launch the setup.

Enter the administrator password and then click Yes to start the installation if a User Account Control dialog box appears.

3. Click I Accept for the next step.



4. Be patient with the installation procedure.

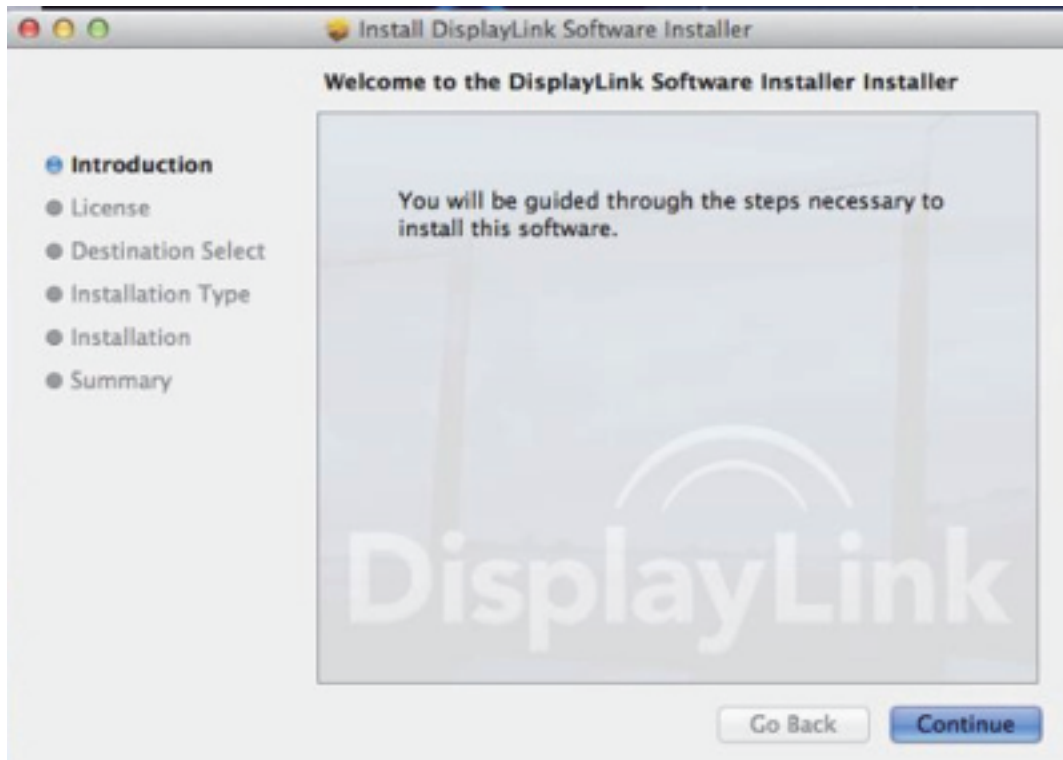


5. Connect the Docking Station to a computer after the driver installation is completed. For connection details, refer to the chapter of Connection.

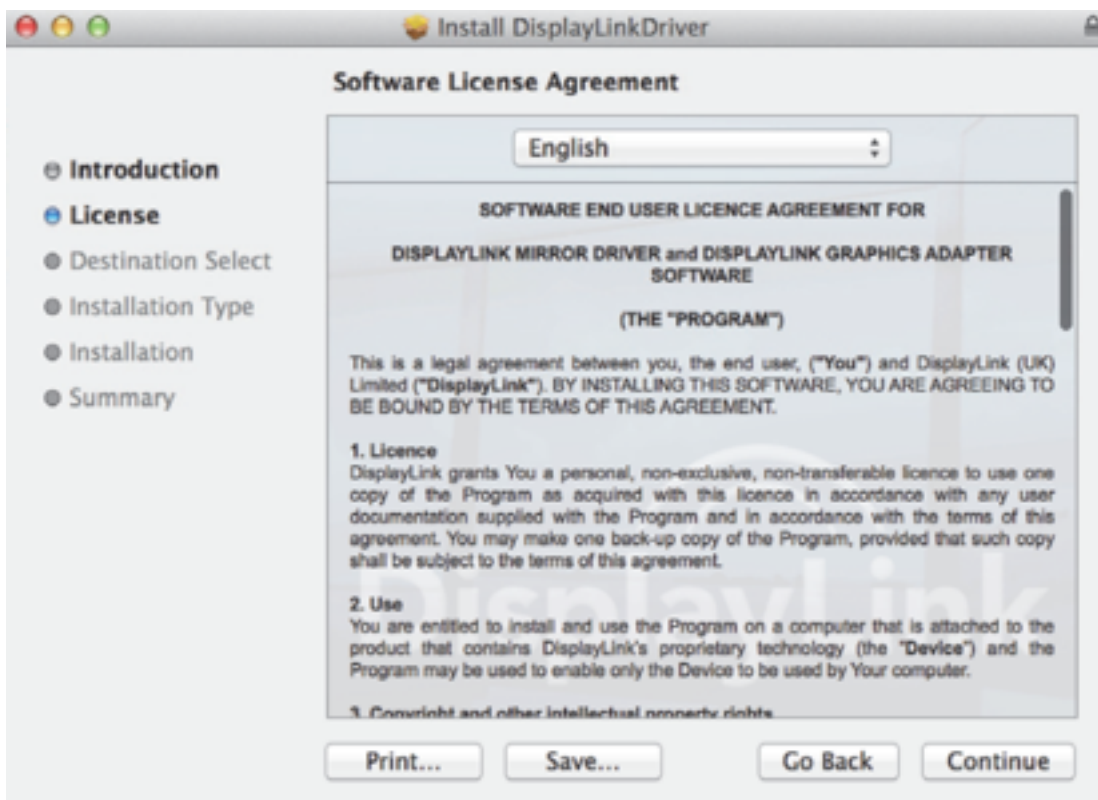
6. When the operating system detects the adapter, the reminder message will appear on the system tray.

## Mac® OS

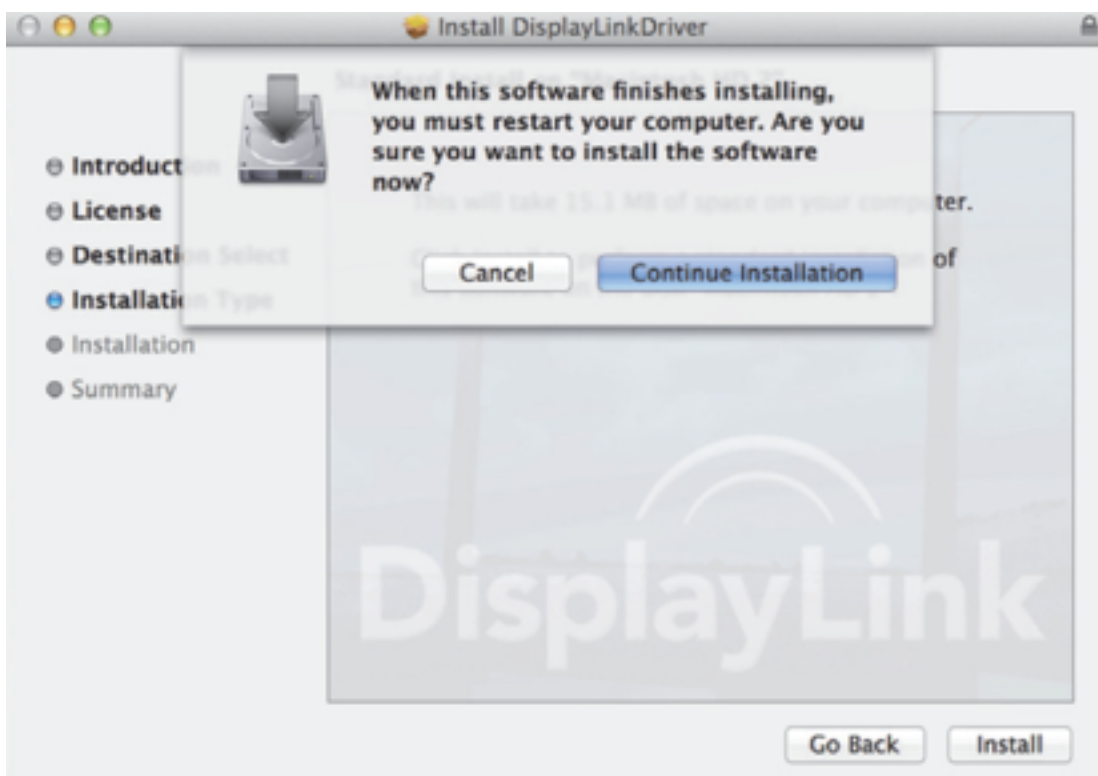
1. Insert the supplied driver CD into a computer's CD/DVD ROM.
2. Click Run Driver.dmg to start the installation, and click Continue.



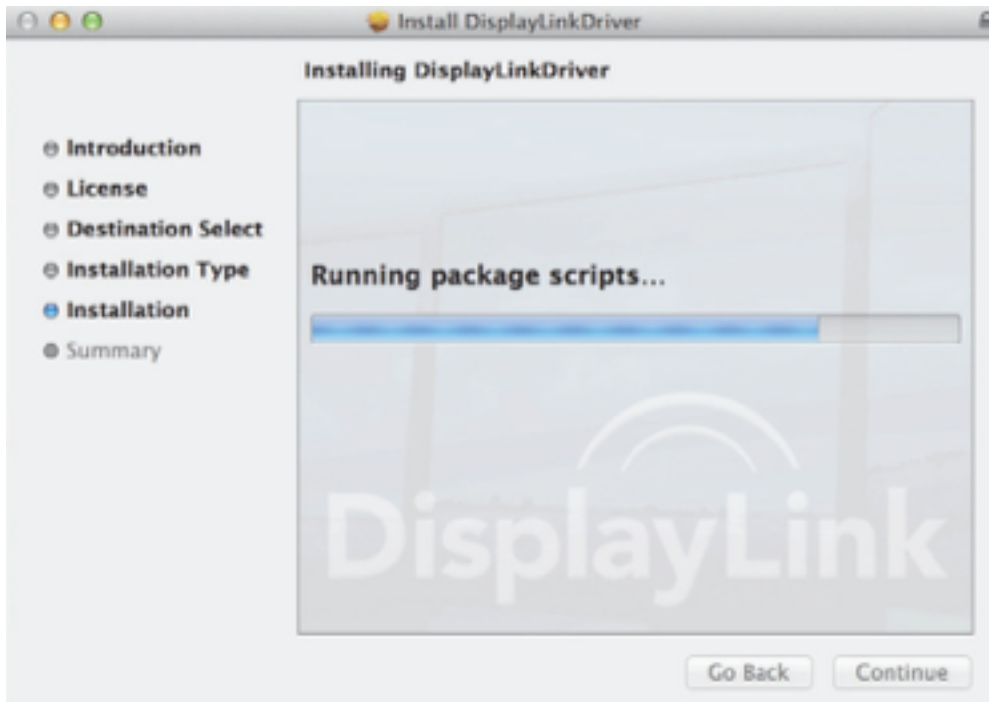
### 3. Click Continue in Software License Agreement.



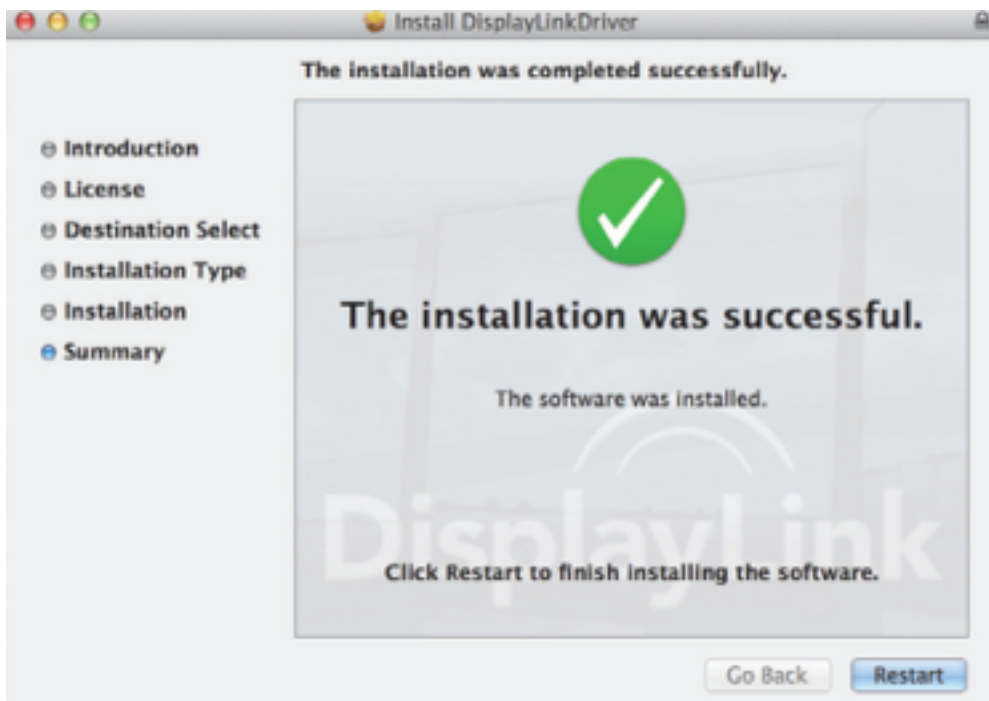
### 4. Click Agree > Install > Continue Installation.



5. Please wait while the installation is in process.



6. Installation was successful





## Verifying the installation

To verify the driver of the adapter, follow the step below.

1. Following the path to open the device manager.

Windows®7:

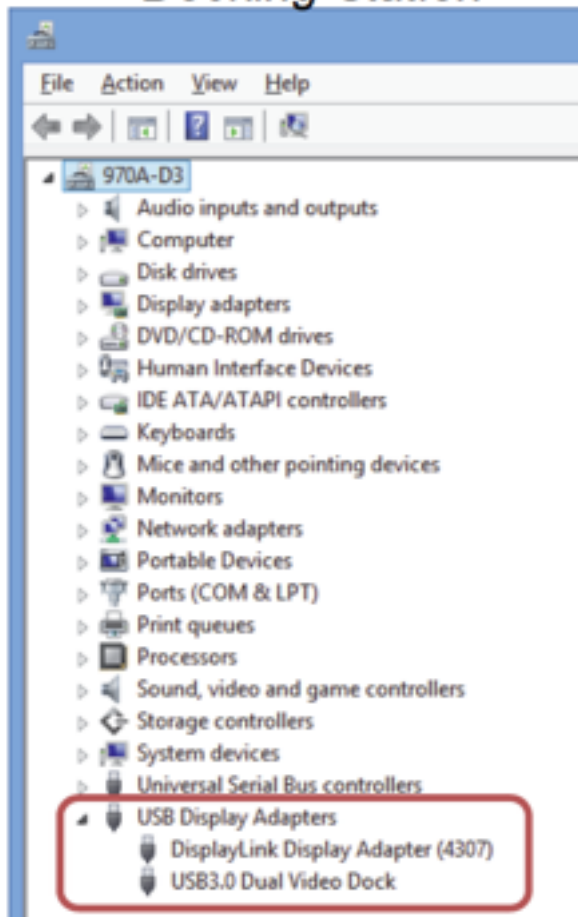
Control Panel\ System and Security\ Systems\  
Device manager

Windows®8/ Windows®8.1:

Settings\ Control Panel\ System and Security\  
System\ Device manager

2. You will find DisplayLink Adapter device listed as  
below.

## *Dual Display Docking Station*



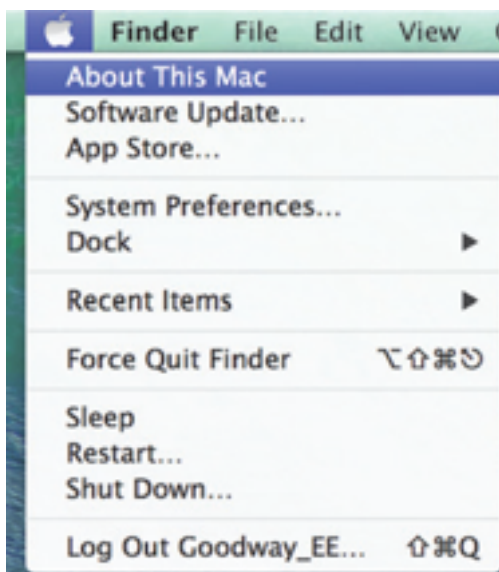
**\*Actual strings depend on your operating system. The screen shots are from Windows®7 (Dual Docking Station are from Windows®8) and might vary slightly for each operating system.**

NOTE:

If you cannot find the driver in the list, the driver may not be properly installed. Please delete the item, unplug the adapter and repeat the installation steps.

Mac®OS

1. Click on the Apple sign on the top left corner of the screen to open About This Mac on Mac®.



2. When the screen below appears, click More Info....



3. When the screen below appears, please click System Report....



4. You will find DisplayLink Adapter device listed as below.

Component	Version	Last Modified	Enabled	Developer
CoreStorage	180	9/19/13, 10:21 PM	No	Apple
CoreStoragePack	180	9/19/13, 10:21 PM	No	Apple
CSRBluetoothHostControllerUSBTransport	4.2.0	9/20/13, 8:18 PM	No	Apple
CDRHIOTransactionDriver	4.2.0	9/20/13, 8:18 PM	No	Apple
DisplayLinkDriver	2.1 (51922)	12/22/13, 7:10 PM	Yes	Identified Developer
DisplayLinkDhernetDriver	1.11.0	12/22/13, 7:10 PM	Yes	Identified Developer

DisplayLinkDriver:	
Version:	2.1 (51922)
Last Modified:	12/22/13, 7:10 PM
Enabled:	Yes
Get Info String:	DisplayLink Driver 2.1 (51922) - Copyright © 2003 - 2013 DisplayLink (UK) Ltd. All rights reserved.
Obtained from:	Identified Developer
Kind:	Intel
Architecture:	i386, x86_64
64-bit (Intel):	Yes
Location:	/Library/Extensions/DisplayLinkDriver.kext
Kext Version:	2.1
Load Address:	18446743521828800000
Valid:	Yes
Authentic:	Yes
Dependencies:	Satisfied
Signed by:	Developer ID Application: DisplayLink Corp (73YQY62QMK), Developer ID Certification Authority, Apple Root CA

## Display configuration

NOTE: The following screenshots in this section are using Windows

®

7 operating system. It may not match your operating system but the definitions of buttons, tabs and menus are the same.

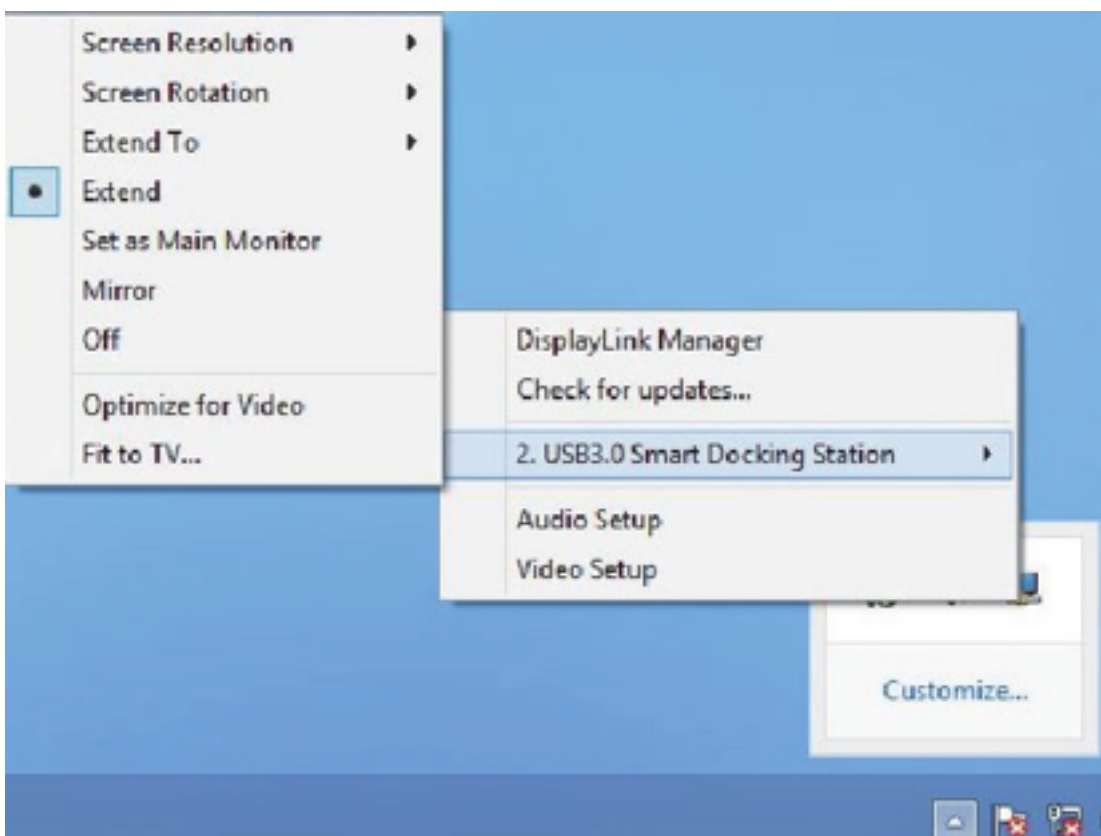
## Utility settings

The supplied utility allows configuring the display mode, screen rotation, screen resolution, and physical arrangement of your monitors.

1. Click utility icon in Windows System Tray.

NOTE: If you cannot find the icon in Windows System Tray, click arrow icon to bring up icon list to find it.

2. Select a preferred option, and then click it using mouse.



## Description of the settings

Options	Description
DisplayLink Manager	Enable the Windows screen resolution page.
Check for Updates	Check the latest driver and download if available
USB 3.0 Dual Display Docking Station	
Screen Resolution	Click to select an available resolution. Note that this function is invalid in mirror mode, as the resolution is defined as the resolution of the primary monitor.
Screen Rotation	Rotate the screen according to the desired orientation
Extend	Extend the screen according to the desired orientation
Extend to	The cursor can extend to desired screen via left/right/above/below way moving
Set as Main monitor	Set this screen to the main screen
Mirror	Duplicate the primary monitor to the monitor which connects with the adapter
Notebook Monitor Off	Switch the add-on monitor to the main display and turn off the screen of the laptop. Note: This function works only when one add-on monitor is connected. This option will also only appear on laptop

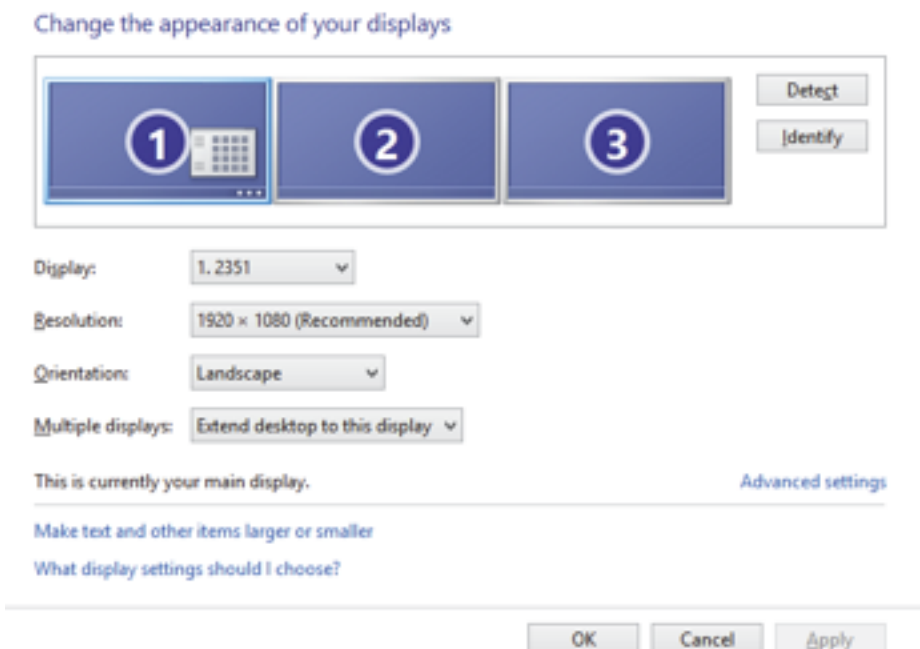
Options	Description
Mirror	Duplicate the primary monitor to the monitor which connects with the adapter
Off	Turn off the monitor
Optimise for video	Optimise the video quality when playing back. Text may appear less clear when enabling
Fit to TV	Adjust the size of Windows Desktop on the TV Note: This function works only when one add-on monitor is connected. Besides, this option will also only work in extended mode. The add-on monitor will change to the extended mode if selecting this option while in mirror mode.
Audio Setup	Enable the Windows audio configuration page. This function works only in specific models
Video Setup	Enable the Windows screen resolution page.

## Multi-monitor configuration

An extra DVI monitor can be connected through the Docking Station (HDMI and DVI monitors for Dual Head Station) if one monitor is already connected to the PC directly. Once the extra monitor is connected, it can be configured to use either “mirror mode”, “extended mode” or be the primary display.

Windows® 7/ Windows® 8/ Windows® 8.1

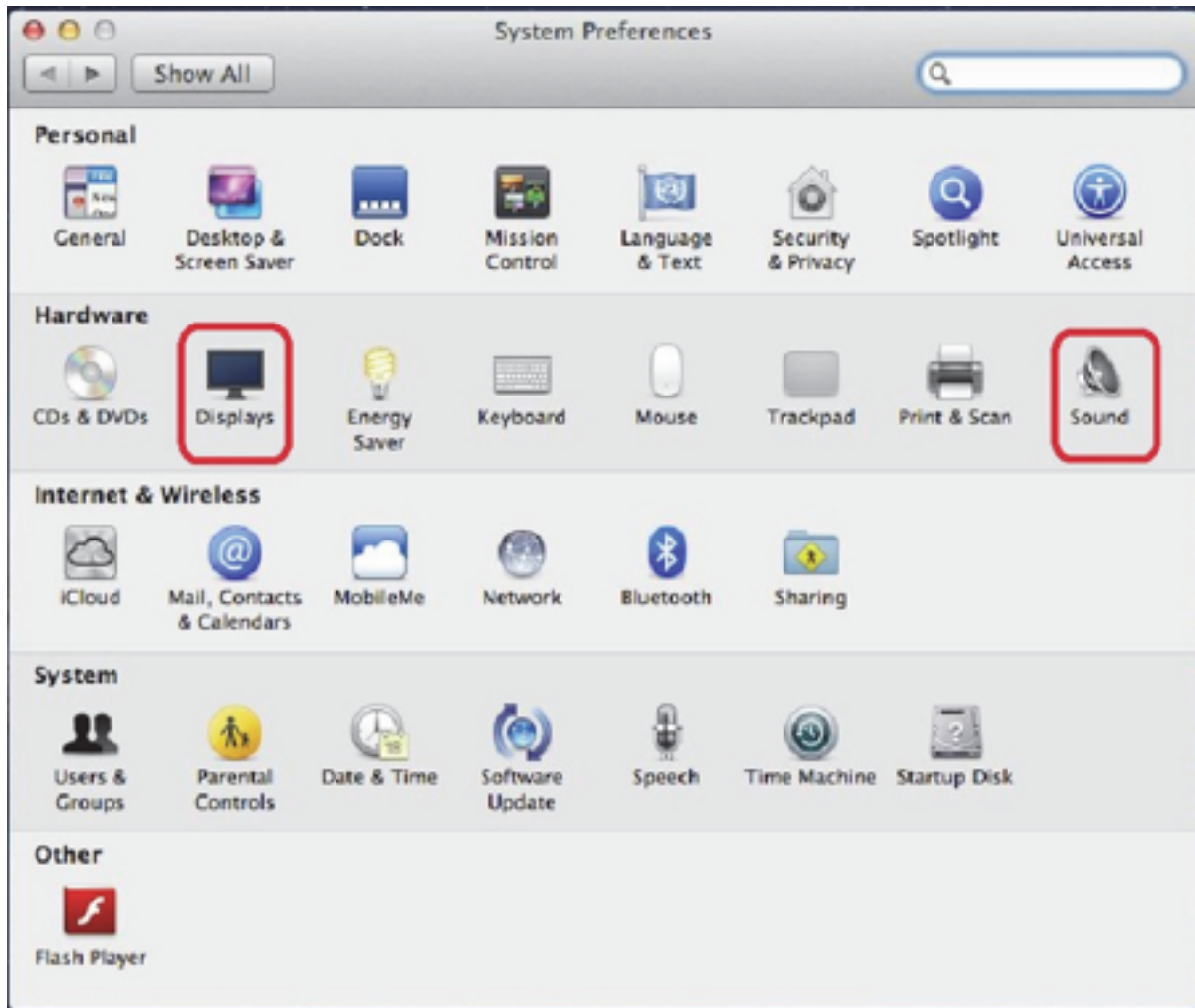
Position the mouse anywhere on the Windows Desktop, Right-click and select Screen Resolution.



Alternatively, click utility icon in the Windows System Tray, and then select DisplayLink Manager or Video Setup.

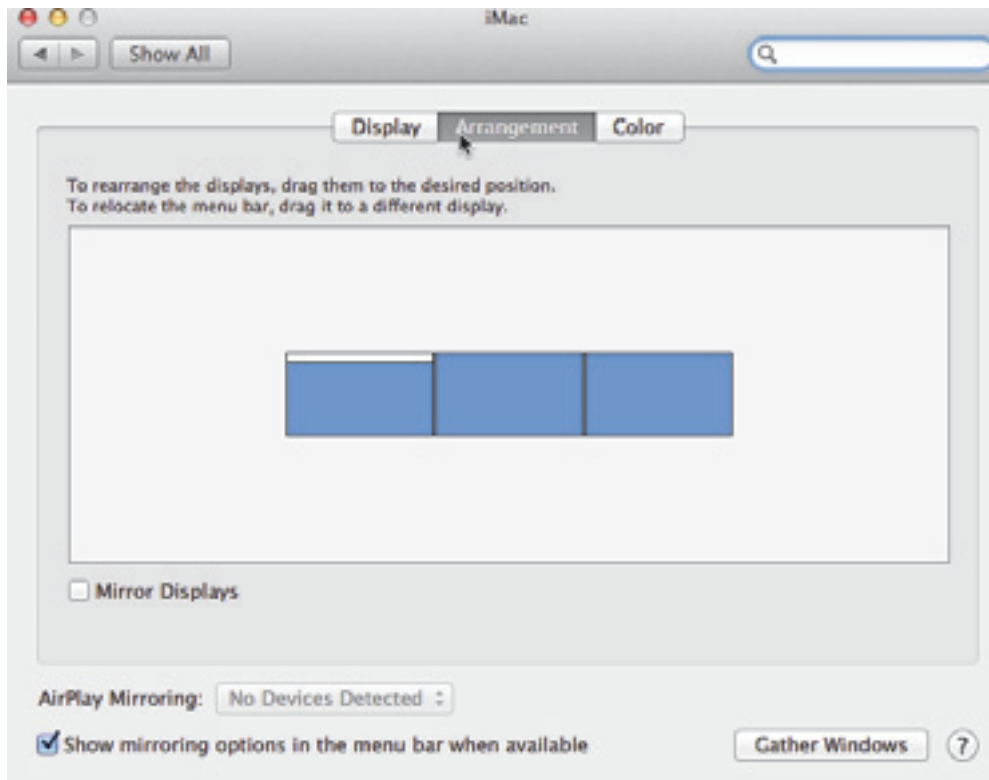
## Mac® OS

1. Click Apple icon of the upper left icon in screen and select System Preferences... on the drop-down list.





2. Click Displays turn to multi-monitor mode and the extended monitor with model number will be shown in the Desktop.



NOTE: Switch to Tick the box in front of Mirror Displays turns to Mirror Mode.

## **Extended mode**

1. Refer to the Windows system configuration section to open the configuration page.
2. In the Display drop-down menu, select the preferred monitor.
3. Check the Multiple Displays > Extend these displays on Window® 7/ Window® 8/ Window® 8.1
4. Click OK to confirm and close the settings screen.
5. Once the setting is completed, simply drag and drop the application icons or the opened windows to the add-on monitor. However, some applications may not support to display on the extended desktop.

## **Cursor disappeared**

If the status remains in the extended mode but the adapter is disconnected, the desktop will still be panned to the add-on monitor. The cursor may not be found on the primary monitor in such a case. If it happens, connect the add-on monitor through the adapter again or keep moving the mouse.

### **Video playback in extended mode**

If the video or DVD playback quality is poor or low performance in extended mode, please playback it on the primary monitor instead of the add-on monitor.

### **Mirror mode**

1. Refer to the Windows system configuration section to open the configuration page.
2. In the Display drop-down menu, select the preferred monitor.
3. Check the Multiple Displays > Duplicate these displays on Window<sup>®</sup>7/ Window<sup>®</sup>8/ Window<sup>®</sup>8.1
4. Click OK to confirm and close the settings screen.

## Be the primary monitor

1. Refer to the Windows system configuration section to open the configuration page.
2. In the Display drop-down menu, select the preferred monitor.
3. Check the Make this my main display box on Window<sup>®</sup> 7, Set as Main Monitor on Window<sup>®</sup> 8/Window<sup>®</sup> 8.1

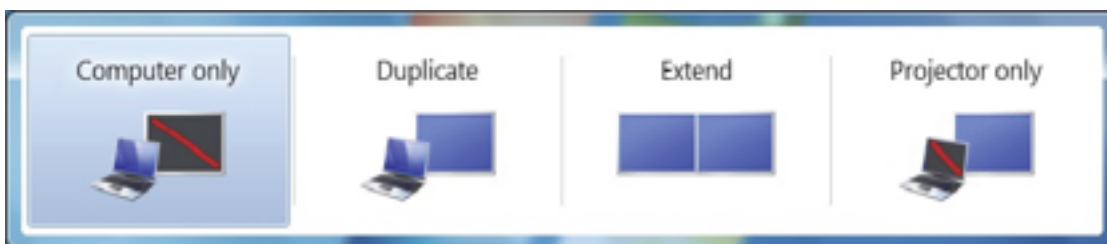
NOTE: Some PCs and laptops may need to disable the main display (i.e. uncheck the Extend the desktop onto this monitor or Extend my Windows desktop onto this monitor box for the main display) as part of the same settings change.

4. Click OK to confirm and close the settings screen.

## Windows shortcut

Press (Windows button) + P to bring up the menu as below, and then select a desired option.

This function is available for Windows<sup>®</sup> 7 only.



## Supported resolution

Before adjusting the resolution, refer to the table below for the supported resolution.

	<b>Name</b>	<b>Refresh rates available at 16 bit color quality</b>	<b>Refresh rates available at 32 bit color quality</b>
640x480	VGA	60 72 75 85	60 72 75 85
800x600	SVGA	56 60 72 75 85	56 60 72 75 85
1024x768	XGA	60 72 75 85	60 72 75 85
1280x720	720p	60	60
1280x768	WXGA+	60 75 85	60 75 85
1280x800	WXGA	60	60
1280x1024	SXGA	60 75 85	60 75 85
1366x768	WXGA+	60	60
1400x1050	SXGA+	60 75 85	60 75 85
1600x1200	UXGA	60	60
1680x1050	WSXGA+	60	60
1920x1080	1080p	60	60
1920x1200	WUXGA	60	60
2048x1152	QXGA	60	60

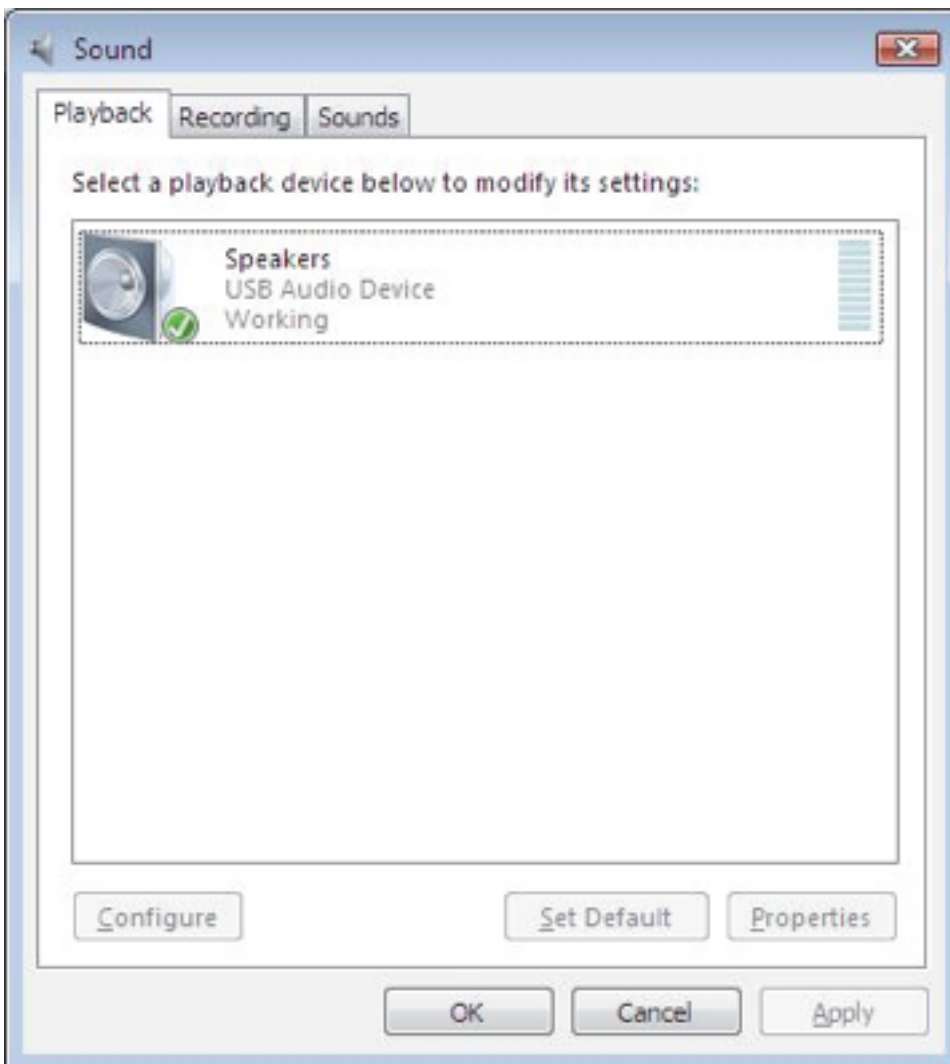
\* Note that interlaced modes and reduced blanking modes are not supported.

## Audio configuration

By default, when the docking station is connected to a computer, the audio configuration may be changed to USB (Multimedia) Audio Device automatically (this setting depends on models). If it does not work, follow the steps below to setup.

Windows®7/ Windows®8/ Windows®8.1

1. Open Control Panel and then select the hardware and sound icon.
2. Click Sound > Manage audio devices and then select USB Audio Device or Displaylink Audio.



## Uninstall the driver

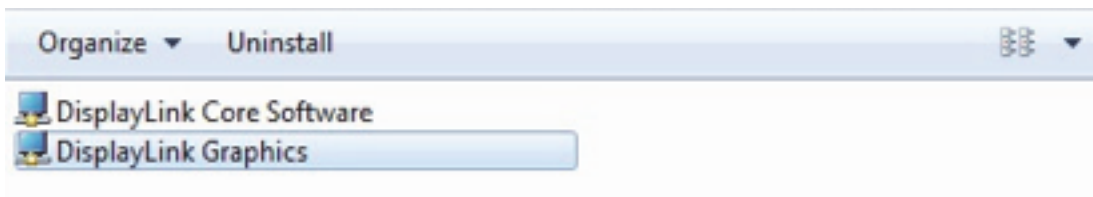
1. Follow the instructions to find the driver path, and then right-click on DisplayLink Graphics to uninstall the driver.

Windows®7

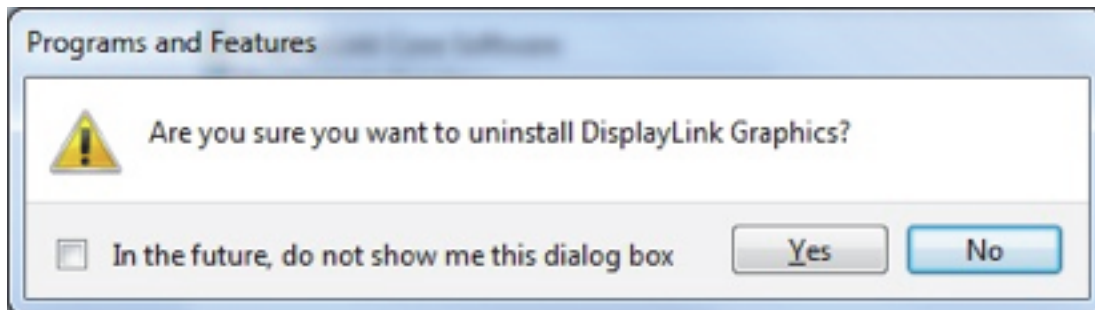
Control Panel > Programs > Programs and Features > Uninstall or change the program

Windows®8/ Windows®8.1

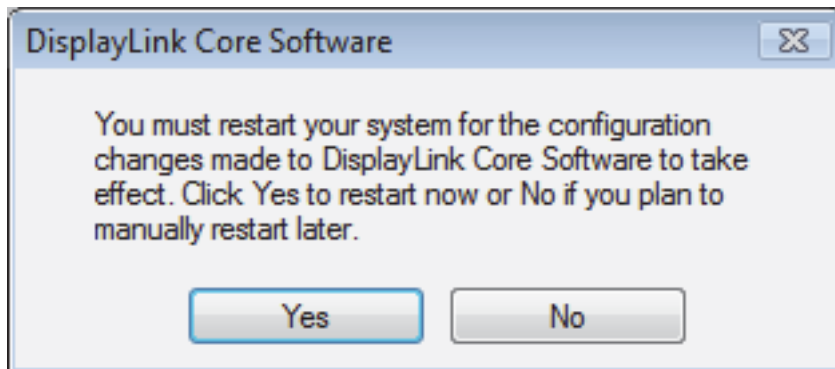
Settings > Control Panel > Programs > Uninstall a program



2. Click Yes to confirm the uninstallation.



3. Click Yes to restart your computer. You can also disconnect the video connection now.



## Mac® OS

1. Open driver and click DisplayLink Software Uninstaller.





## Specification

Host Interface	USB 3.0	
Connector	Video Output	HDMI 30 pin Female Connector (Dual Display Model) DVI HDDE 30 pin Female Connector
	Host upstream link	USB B Type Female Connector
	HUB downstream link	USB A Type Female Connector
	Audio Port	3.5mm stereo mini-jack 2.1ch
	Ethernet Port	RJ45 Connector
	Power	DC power jack
Video Resolution	HDMI (Dual Display Model)	2048x1152
	DVI	2048x1152
Supported colours	16 bits and 32 bits	
Audio	2.1ch	
Ethernet	10/100/1000	
Power	Power mode	Self-powered
	Power Adapter	Input: AC 100-240V Output: DC 5V/4A
	Power consumption	Operation Power: 14.43W Suspend Mode Power: 1.95W
Physical Properties	Housing	ABS (Plastic)
	Weight	365 grams approx
Working environment	Operation temperature	0C -40C
	Storage temperature	-20C - 70C
Compliance	CE. FCC	

**\*Specifications are subject to change without prior notice.**

## **Regulatory Compliance**

### **FCC Conditions**

This equipment has been tested and found to comply with Part 15 Class B of the FCC Rules. Operation is subject to the following two conditions: (1) This device may not cause harmful interference. (2) This device must accept any interference received and include interference that may cause undesired operation.

### **CE**

This equipment is in compliance with the requirements of the following regulations: EN 55 022: CLASS B

### **WEEE Information**

For EU (European Union) member users: According to the WEEE (Waste electrical and electronic equipment) Directive, do not dispose of this product as household waste or commercial waste. Waste electrical and electronic equipment should be appropriately collected and recycled as required by practices established for your country. For information on recycling of this product, please contact your local authorities, your household waste disposal service or the shop where you purchased the product.

