



Maintenance and Service Guide

OMEN 27qs model

SUMMARY

This guide provides information about spare parts, removal and replacement of parts, diagnostic tests, problem troubleshooting, and more.

© Copyright 2023 HP Development Company, L.P.

AMD is a trademark of Advanced Micro Devices, Inc. Bluetooth is a trademark owned by its proprietor and used by HP Inc. under license. NVIDIA is a trademark and/or registered trademark of NVIDIA Corporation in the U.S. and other countries. USB Type-C and USB-C are registered trademarks of USB Implementers Forum. DisplayPort and the DisplayPort logo are trademarks owned by the Video Electronics Standards Association (VESA) in the United States and other countries.

The information contained herein is subject to change without notice. The only warranties for HP products and services are set forth in the express warranty statements accompanying such products and services. Nothing herein should be construed as constituting an additional warranty. HP shall not be liable for technical or editorial errors or omissions contained herein.

First Edition: Feb. 2023

Document Part Number: N31088-OMEN
27qs-MSG-V1

Assembly part number: N31088-001

Product notice

Only trained service personnel familiar with this product should service it. Before performing any maintenance or service, be sure to read

“Important Safety Information” .

Table of Contents

1	Getting started	2
	Important safety information	2
	Important service information and precautions.....	2
	RoHS (2002/95/EC) requirements.....	3
	General descriptions	3
	Firmware updates	3
	Before returning the repaired product to the customer	3
2	Monitor features	4
	Features.....	4
	Locating the serial number and product number.....	7
3	Illustrated parts catalog.....	8
	How to order parts.....	10
4	Removal and replacement procedures.....	11
	Preparation for disassembly	11
	Rear Cover.....	12
	Power board.....	16
	Connector repair.....	17
	HDMI 1 connector CN5002.....	19
	HDMI 2 connector CN5001	20
	DP connector CN5101.....	21
	USB UP connector CN105.....	22
	USB1 connector CN104.....	22
	USB 2 connector CN106	23
	Phone Jack connector CN6001	23
	Function test	24
	Function test	24
	Support and troubleshooting.....	25
	Index	26

1 Getting started

Read this chapter to learn about safety information and where to find additional HP resources.

Important safety information

Carefully read the cautions and notes within this document to minimize the risk of personal injury to service personnel. The cautions and notes are not exhaustive. Proper service methods are important to the safe, reliable operation of equipment. Improper service methods can damage equipment.

The service procedures recommended and described in this service manual provide effective methods of performing service operations. Service engineers should have prior repair knowledge and experience as well as appropriate training for the product before performing service procedures.

- Be sure your working environment is dry and clean and meets all government safety requirements.
- Be sure that other persons are safe while you are servicing the product.
- Do not perform any action that can cause a hazard to the customer or make the product unsafe.
- Use proper safety devices to ensure your personal safety.
- Always use approved tools and test equipment for servicing.
- Never assume the product's power is disconnected from the main power supply. Check that it is disconnected before opening the product's cabinet.
- Modules containing electrical components are sensitive to electrostatic discharge (ESD). Follow ESD safety procedures while handling these parts.
- Some products contain more than one battery. Do not disassemble or expose a battery to high temperatures, such as throwing into fire, or the battery may explode.
- Refer to government requirements for battery recycling or disposal.

This information provides general service information for the monitor. Adherence to the procedures and precautions is essential for proper service.

IMPORTANT: Only trained service personnel who are familiar with this HP product should perform service or maintenance for it. Before performing any service or maintenance, personnel must read the important safety information.

IMPORTANT: You must disconnect the power cord from the power source before opening the monitor to prevent component damage.

Important service information and precautions

- Repair must be performed by professional service technicians in a repair center. End users should not perform these procedures.
- Please note during servicing that the primary side is the high voltage area.
- This monitor meets ROHS requirements. Be sure to use lead-free solder wire when soldering.
- If you must change a capacitor, be sure to match the polarity as printed on the PCB.
- If you must replace a capacitor, make sure the specification and part number match the BOM and location.
- If you must replace a capacitor, insert new parts carefully to avoid a short circuit caused by the near pin.

- Do not get the board wet. Water and moisture can cause a short circuit that causes malfunctions.
- To avoid damage, be sure to use lead-free solder.
- When soldering, work quickly to avoid overheating the circuit board.
- Keep the soldering iron tip clean and well tinned when replacing parts.
- After repair, perform a close inspection of the circuit board to confirm it is in good condition.
- After repair, perform a function test to confirm the power supply is working properly.

ERP Lot5 requirement

1. A professional repairer must have the technical competence to repair electronic displays and comply with the applicable regulations for repairers of electrical equipment in the Member States where the repairer operates. Reference to an official registration system as professional repairer, where such a system exists in the Member States, shall be accepted as proof of compliance.
2. A professional repairer must have insurance that covers liabilities resulting from repairs, regardless of whether required by the Member State.

RoHS (2002/95/EC) requirements

Applied to all countries that require RoHS.

The RoHS (Restriction of Hazardous Substance in Electrical and Electronic Equipment Directive) is a legal requirement by the EU (European Union) for the global electronics industry sold in the EU and other countries. Any electrical and electronics products launched in the market after June 2006 should meet this RoHS requirement. Products launched in the market before June 2006 are not required to be compliant with RoHS parts. If the original parts are not RoHS compliant, the replacement parts can be non-ROHS compliant. If the original parts are RoHS compliant, the replacement parts **MUST** be RoHS compliant.

If product service or maintenance requires replacing parts, confirm the RoHS requirement before replacement.

General descriptions

This manual contains general information. There are two levels of service:

Level 1: Cosmetic/appearance/alignment service

Level 2: Circuit board or standard parts replacement

Firmware updates

Firmware updates for the monitor are available at support.hp.com. If no firmware is posted, the monitor does not need a firmware update.

Before returning the repaired product to the customer

Perform an AC leakage current check on exposed metallic parts to be sure the product is safe to operate without the potential of electrical shock. Do not use a line isolation transformer during this check.

Measurements that are not within specified limits present a possible shock hazard. You must check and repair the product before returning it to the customer.

2 Monitor features

This chapter provides an overview of the monitor's features.

Features

Depending on the model, your monitor might include the following features:

Display features

- 68.6 cm, 27-in screen with 2560 × 1440 resolution, plus full-screen support for lower resolutions; includes custom scaling for maximum image size while preserving original aspect ratio
- Liquid crystal display (LCD) with active matrix and in-plane switching (IPS)
- VA panel technology (select models)
- Wide color gamut to provide coverage of sRGB/DCI-P3 color spaces
- Nonglare panel with an LED backlight
- Wide viewing angle to allow viewing from a sitting or standing position, or moving from side to side
- Tilt, swivel, and height adjustment capabilities
- Pivot capability to rotate the monitor head from landscape to portrait orientation (select models)
- Dual Picture in Picture (PiP) and Picture beside Picture (PbP) functionality to enable the DisplayPort™ and High-Definition Multimedia Interface® (HDMI) inputs to be viewed in each half of the screen (select models)
- On-screen display (OSD) adjustments in several languages for easy setup and screen optimization
- Keyboard Video Mouse (KVM) button for selecting the source device for the monitor (select models)
- Energy saver feature to meet requirements for reduced power consumption
- Cable management feature for placement of cables and cords
- Connectors
 - DisplayPort video input (cable included)
 - HDMI video input
 - Audio-out (headphone) jack
 - USB hub with one USB Type-B port (select models) that connects to the computer (upstream) and two USB ports that connect to USB devices (downstream)
 - USB hub with one USB Type-C® port (select models) that connects to the computer (upstream) and two USB ports that connect to USB devices (downstream)
 - USB Type-B – to – USB Type-A cable (select models)
 - USB Type-C-to-USB Type-C cable (select models)

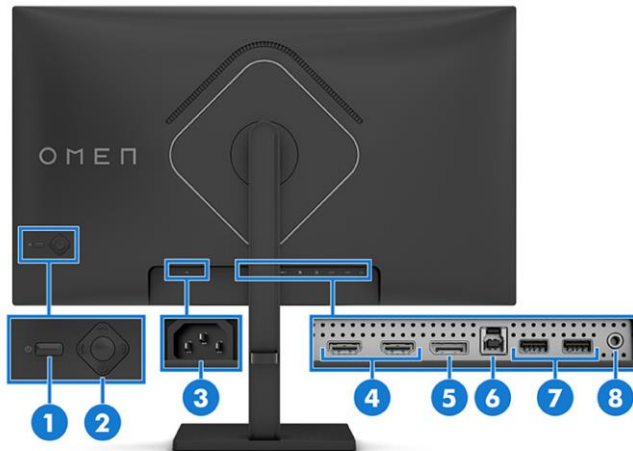
- HDMI 2.1 cable (select models)
 - Plug and Play capability, if supported by your operating system
- Monitor stand
- Removable stand for flexible monitor head mounting solutions
 - HP Quick Release 2 device to attach the monitor head to the stand with a simple click, and then remove it with the convenient sliding tab release
 - VESA® mounting bracket for attaching the monitor head to a wall-mount device or swing arm
 - VESA mounting capability (100 × 100 mm) for attaching the monitor to a swing arm mount
 - Support for a mounting bracket to attach the monitor to a workstation

NOTE:

NOTE: To access the latest user guide, go to <http://www.hp.com/support>, and follow the instructions to find your product. Then select Manuals.

Rear components

To identify the components on the rear of the monitor, use this illustration and table.



Rear components and their descriptions

Component	Description
(1) Power button	Turns the monitor on or off.
(2) OSD control	Adjusts settings in the OSD menu.
(3) Power connector	Connects the power cord to the monitor.
(4) HDMI ports (2)	Connect the HDMI cable to a source device such as a computer or game console.
(5) DisplayPort connector	Connects the DisplayPort cable to a source device such as a computer or game console.
(6) USB Type-B ports (upstream)	Connects a cable to a source device such as a computer or game console. This port also enables the USB Type-A ports to perform their functions.
(7) USB ports (2)	Connect USB devices.
(8) Audio-out (headphone) jack	Connects optional powered stereo speakers, headphones, earbuds, or a television audio cable. CAUTION: To reduce the risk of hearing damage, reduce the volume before using headphones or earbuds.

Locating the serial number and product number

Depending on the product, the serial number and product number are located on a label on the rear of the monitor or on a label under the front bezel of the monitor head. You might need these numbers when contacting HP for support.

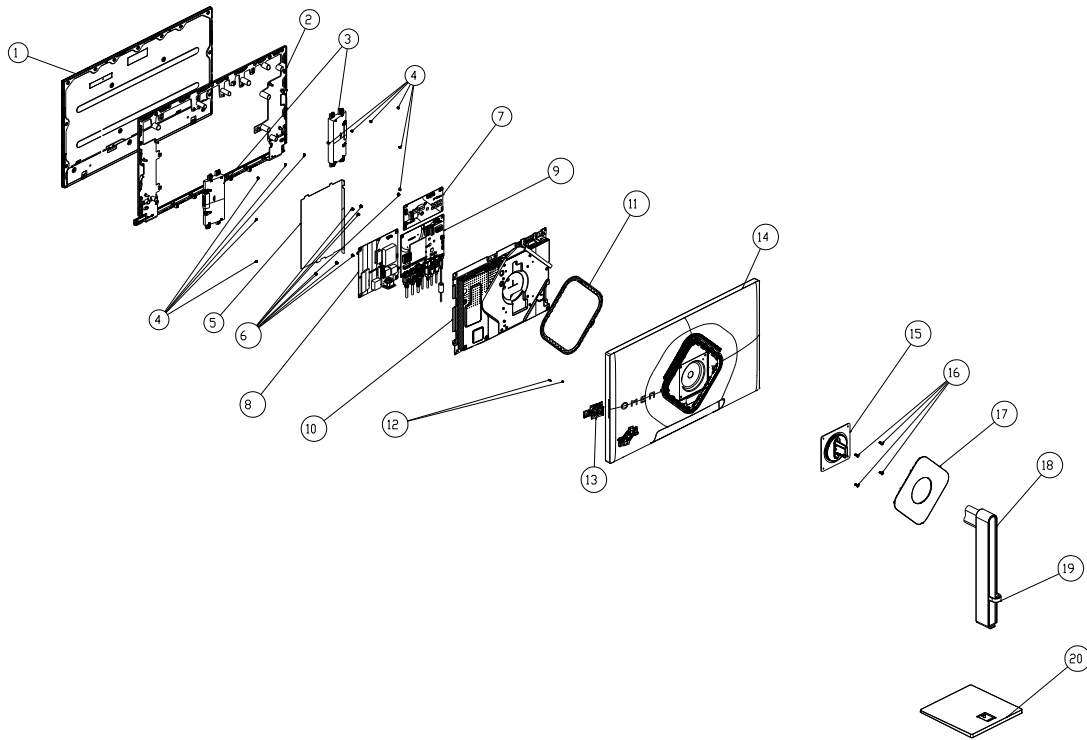


Label



3 Illustrated parts catalog

To identify the monitor major components, use this illustration and table.



Item	Description	Qty
1	PANEL	1
2	MIDDLE_FRAME	1
3	SPEAKER 3W	1
4	SCREW M3 4	15
5	INSULATING SHEET 240.2*168*10mm	1
6	SCREW M3 6	1
7	CONVERTER BOARD	1
8	ADAPTER BOARD	1
9	MAIN BOARD	1
10	MAINFRAME	1
11	CONNECTOR BOARD	1
12	SCREW Q2 3.4	2
13	KEY BOARD	1

14	REAR_COVER	1
15	BKT_VESA	1
16	SCREW M4 10	4
17	COVER_VESA	1
18	stand ass'y	1
19	stand clamp	1
20	BASE_ASS' Y NA N/A	1

How to order parts

The HP authorized repair center can purchase the power board from HP.

Power board

Description	HP spare part number	Manufacturer part number
PSU OMEN 27qs 1 st Source	N49790-001	ADPCM1614AA1
PSU OMEN 27qs 2 nd Source	N49790-002	LNPCMH261GQA1

Capacitors and connectors are available for purchase from the following EU distributors:

- RS Component: [Capacitors | RS Components \(rs-online.com\)](https://www.rs-online.com)
- Farnell: [Farnell UK - Electronic Components Distributor](https://www.farnell.com)

Capacitors by distributor

Component description	Location	Component distributor	Distributor part number
EC 470U 20% 25V 10*12mm 10000 hr -- RF1E	C9102/C9104/ C9103/C9113	RS	25ZLJ470M10X12.5

Connectors by manufacturer

Component description	Location identifier	Component distributor	Distributor part number
HDMI	CN5002/CN5001	RS	SD-47151-001(Molex)
DP	CN5101	Farnell	DP1RD20JQ1 (JAE)
USB B	CN105	RS	692221030100(Wurth Elektronik)
USB 3.0 A	CN104/CN106	RS	10117835-002LF(Ampheno ICC)
PHONE JACK	CN6001	RS	913-1021(RS PRO)

NOTE: Rear cover and chassis need to be modified to hold connector. Connector may need modifications to meet functional, safety and regulatory requirements accordingly if it doesn't match exactly.

NOTE: The connector may need to be modified to meet functionality, regulatory and safety requirements if it is not an exact match.

You can purchase cables from the HP part store at <https://partsurfer.hp.com/Search.aspx>.

Internal and External Power Supplies are available for purchase from the following EU distributor: EET_ <https://www.eetgroup.com/en-eu/>

NOTE: HP continually improves and changes product parts. For complete and current information about supported parts for your product, go to <https://partsurfer.hp.com/Search.aspx>, select your country or region, and then follow the on-screen instructions.

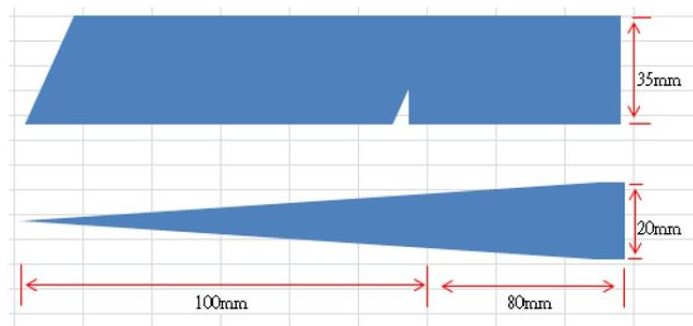
4 Removal and replacement procedures

Adherence to these procedures and precautions is essential for proper service.

Preparation for disassembly

Use this information to properly prepare to disassemble and reassemble the monitor.

- 1) Read the “Important safety information” and “Important service information and precautions” sections in the “Getting started” chapter of this guide.
- 2) Clean the room for disassembly.
- 3) Identify the disassembly area.
- 4) Check the position that the monitors are to be placed along with the number of monitors. Prepare the area for material flow according to the disassembly layout.
- 5) Be sure to have the following equipment and materials:
 - Press fixture
 - Working table
 - Screwdriver
 - Knife
 - Gloves
 - Cleaning cloth
 - ESD protection
 - Scraper bar in the following dimensions:



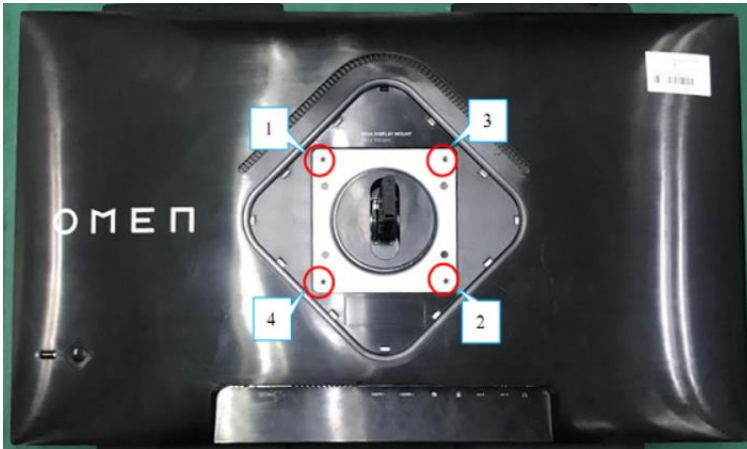
Rear Cover

Before removing the Rear Cover, follow these steps:

- ▲ Prepare the monitor for disassembly. See Preparation for disassembly on page 11.

Remove the Rear Cover:

- 1) Remove the Stand-Base Assy and remove four screw to remove the rear cover.



- 2) Use your fingers to split the left and right sides apart between the middle frame and rear case.

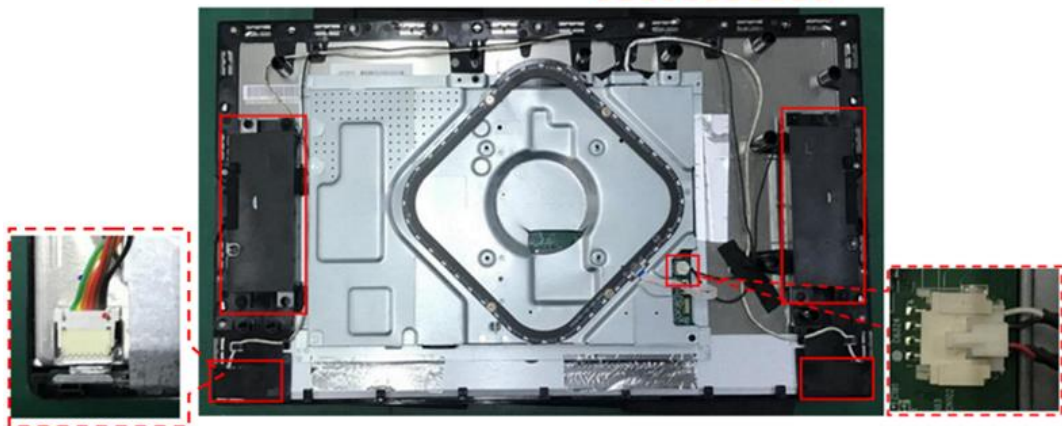


- 3) Insert the scraper bar tool into the gap between the middle frame and rear case, and then rotate. The hook opens. Repeat the steps.

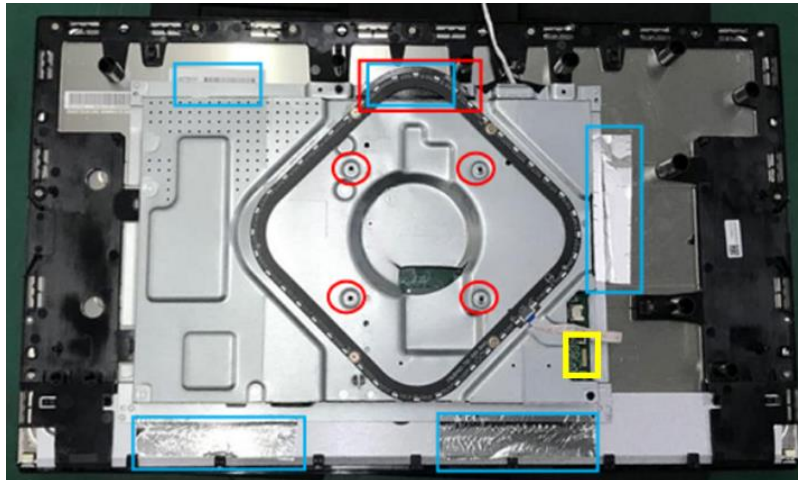




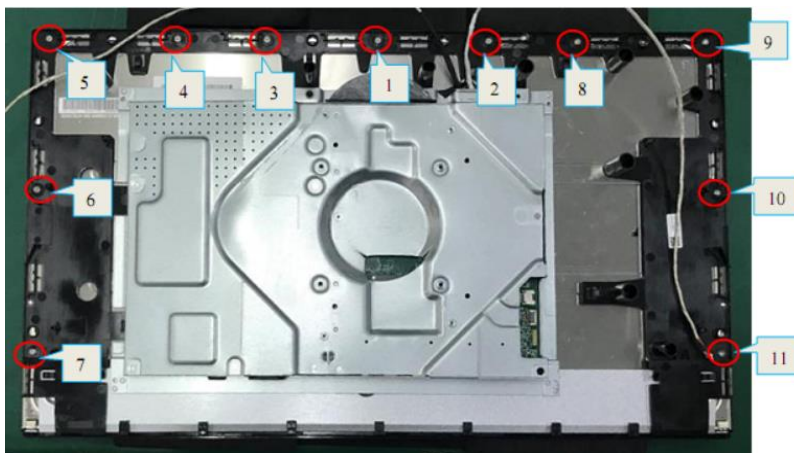
- 4) Disassemble the Rear Cover and disconnect the connectors. Remove the speakers.



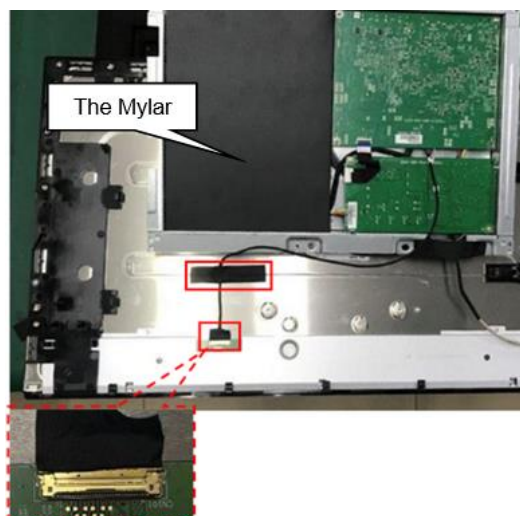
- 5) Remove the Connector board and disconnect the pins. Take off the tapes.

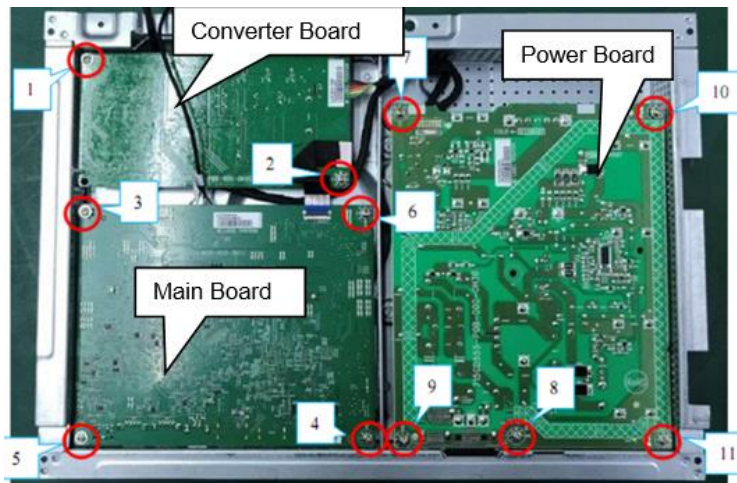


- 6) Remove the screws to remove the middle frame and the panel.



- 7) Remove the Mylar.
8) Disassemble 11 screws from the boards.
9) Disassemble all the boards from housing.
10) Disconnect all the wires from the board.





- 11) Remove the screws to remove the Connector board and the key board.

Power board

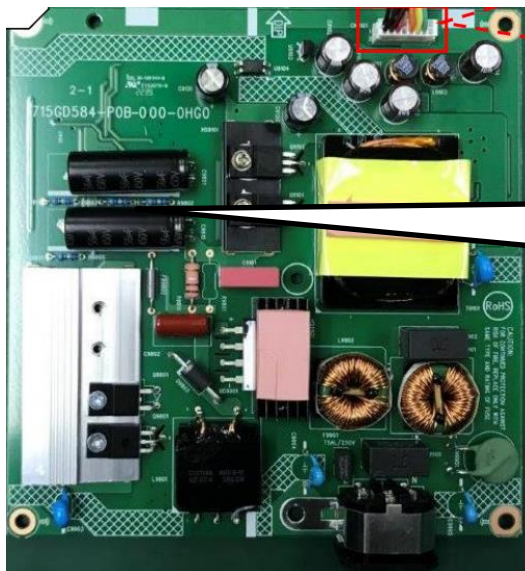
The power board part number is 1st Source ADPCM1614AA1 and 2nd Source LNPCM261GQA1.

Before removing the power board, follow these steps:

- ▲ Prepare the monitor for disassembly. See Preparation for disassembly on page 11.

Remove the power board:

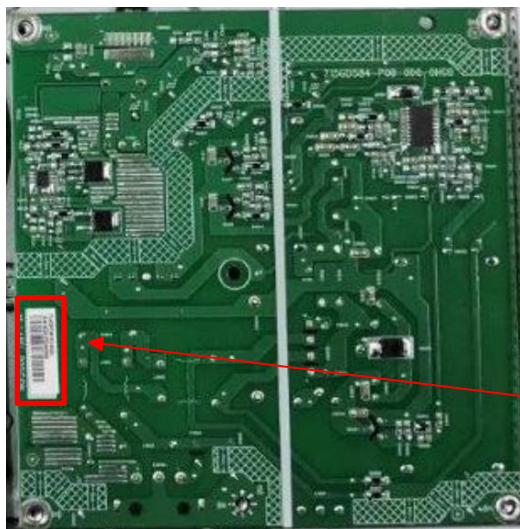
- 1) The HP OMEN 27qs power board connector position is as follows:



CN9101

Warning: After unplugging the power supply, the capacitance is still charged, do not touch and discharge the capacitor.

- 2) Locate the part number location on the board.



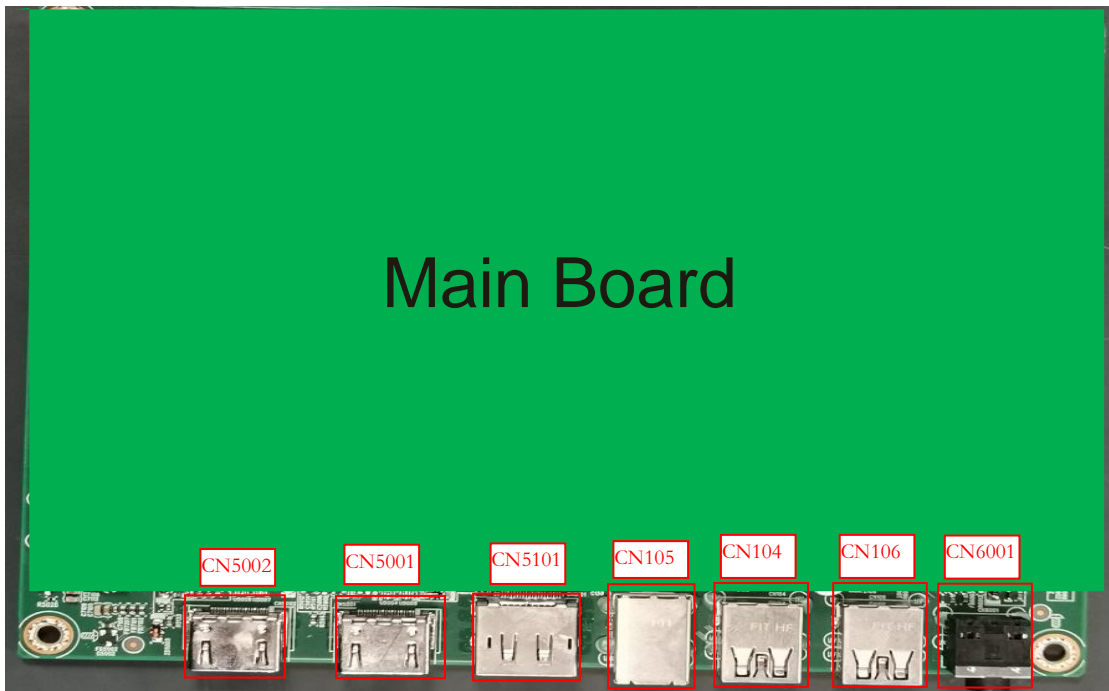
Connector repair

This procedure includes HDMI, DisplayPort, Phone Jack and USB connectors.

The connectors are on the main board (board part number CBPR2RAH1Q4).

The connector identifiers are as follows:

Connector	Location
HDMI	CN5002
HDMI	CN5001
DP	CN5101
USB UP	CN105
USB 1	CN104
USB 2	CN106
Phone Jack	CN6001



Before repairing connectors, follow these steps:

- ▲ Prepare the monitor for disassembly. See Preparation for disassembly on page 11.

IMPORTANT:

- **Repair Condition:** Connector repair is only for out of warranty.
- Repairing must operate by professional repairers (Note) in repair center, not applicable for end user.
- Electrostatic protection is required when component replacement is required.
- The monitor meets ROHS, please use Lead-free solder wire for soldering.
- If Connector need to replace, must check specification and part number whether match the BOM and location.
- If connector need to replace, please insert new parts carefully because the near pin may cause short circuit by inappropriate operate.
- **DO NOT** allow any liquid on the board. Water and moisture may cause short-circuit to the electronic components and lead to malfunctions.
- The fusion point of Lead-Free solder is requested. Repairing with conventional lead wire may cause damage.
- Work quickly to avoid overheating the circuit board as soon as you confirm the steady soldering condition.
- Keep the soldering iron tip clean and well tinned and when replacing parts.
- A close inspection of the circuit board revealed look in good condition.
- After repaired, must connect source to each port to check Main board function is ordinary.

Note: (The requirement of professional repairers regulation by ERP lot5)

- 1) The professional repairer has the technical competence to repair electronic displays and complies with the applicable regulations for repairers of electrical equipment in the Member States where it operates. Reference to an official registration system as professional repairer, where such system exists in the Member States concerned, shall be accepted as proof of compliance with this point.
- 2) The professional repairer is covered by insurance covering liabilities resulting from its activity, regardless of whether this is required by the Member State.

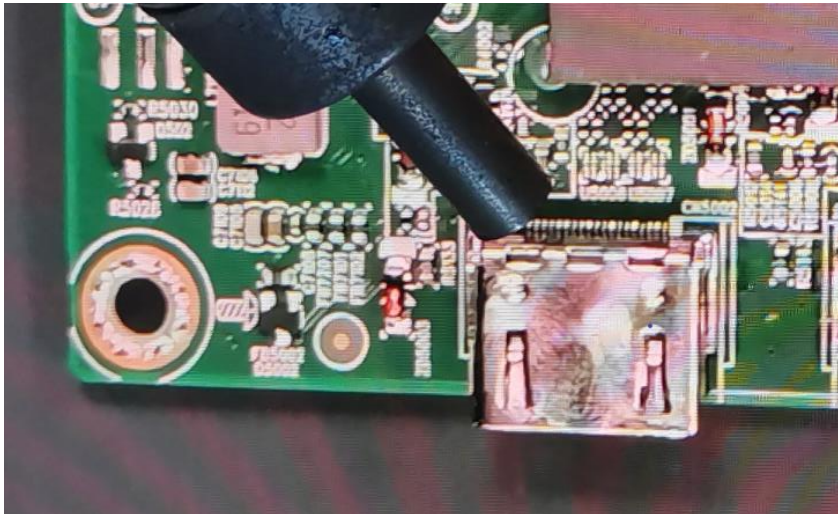
HDMI 1 connector CN5002

Repair the HDMI1 connector:

- 1) Use a soldering iron and a de-soldering pump to remove as much solder as possible from the pin.



- 2) Use a hot air gun to melt the solder on the pins.



- 3) Lift the HDMI 1 connector from the circuit board.
- 4) Place the new component on the circuit board. Be sure that it matches the circuit board footprint.
- 5) Solder the new component.

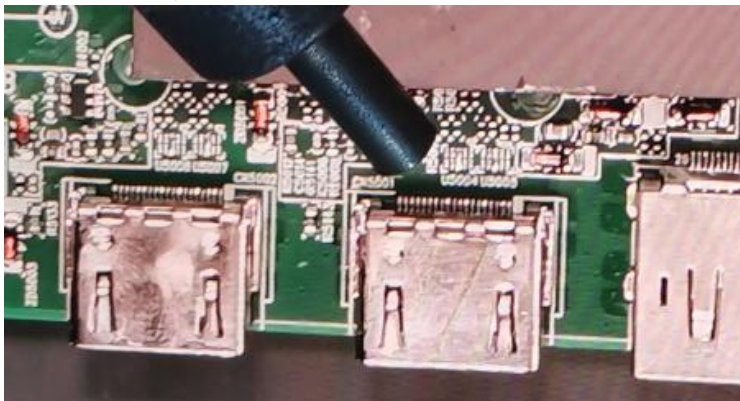
HDMI 2 connector CN5001

Repair the HDMI 2 connector:

- 1) Use a soldering iron and a de-soldering pump to remove as much solder as possible from the pin.



- 2) Use a hot air gun to melt the solder on the pins.



- 3) Lift the HDMI 2 connector from the circuit board.
- 4) Place the new component on the circuit board. Be sure that it matches the circuit board footprint.
- 5) Solder the new component.

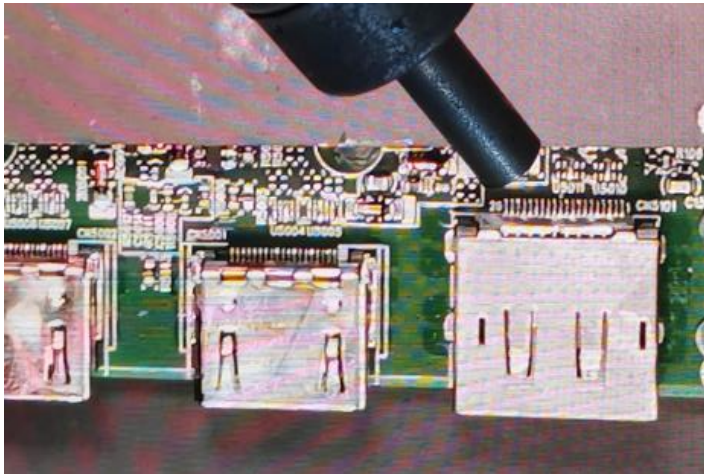
DP connector CN5101

Repair the DP connector:

- 1) Use a soldering iron and a de-soldering pump to remove as much solder as possible from the pin.



- 2) Use a hot air gun to melt the solder on the pins.



- 3) Lift the DP connector from the circuit board.
- 4) Place the new component on the circuit board. Be sure that it matches the circuit board footprint.
- 5) Solder the new component.

USB UP connector CN105

Repair the USB up connector:

- 1) Use a soldering iron and a de-soldering pump to remove as much solder as possible from the pin.



- 2) Lift the USB up connector from the circuit board.
- 3) Place the new component on the circuit board. Be sure that it matches the circuit board footprint.
- 4) Solder the new component.

USB1 connector CN104

Repair the USB1 connector:

- 1) Use a soldering iron and a de-soldering pump to remove as much solder as possible from the pin.



- 2) Lift the USB1 connector from the circuit board.
- 3) Place the new component on the circuit board. Be sure that it matches the circuit board footprint.
- 4) Solder the new component.

USB 2 connector CN106

Repair the USB 2 connector:

- 1) Use a soldering iron and a de-soldering pump to remove as much solder as possible from the pin.

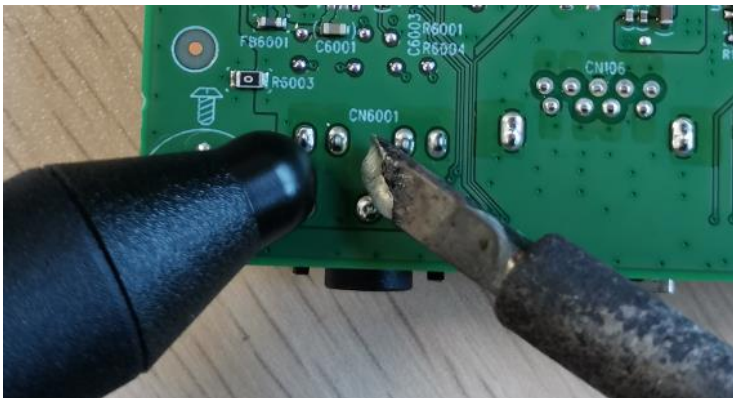


- 2) Lift the USB 2 connector from the circuit board.
- 3) Place the new component on the circuit board. Be sure that it matches the circuit board footprint.
- 4) Solder the new component.

Phone Jack connector CN6001

Repair the Phone Jack connector:

- 1) Use a soldering iron and a de-soldering pump to remove as much solder as possible from the pin.



- 2) Lift the audio connector from the circuit board.
- 3) Place the new component on the circuit board. Be sure that it matches the circuit board footprint.
- 4) Solder the new component.

Function test

After repair, be sure to confirm that all functions are working.

Function test

Test item	Operating description	Tool used
HDMI test	Confirm whether image displays and sound plays correctly on the monitor.	Computer or DVD player
DP test	Confirm whether image displays and sound plays correctly on the monitor.	Computer or DVD player
USB-C test	Confirm whether image displays and sound plays correctly on the monitor	Computer or USB-C player
Audio test	Change volume and balance to confirm whether volume is smooth and loud enough.	Speaker

Support and troubleshooting

The following table lists possible issues, the possible cause of each issue, and the recommended solutions.

Issues	Possible cause	Solution
Screen is blank or video is blinking.	Power cord is disconnected.	Connect the power cord.
	Monitor is off.	Press the monitor power button. NOTE: If pressing the power button has no effect, press and hold the power button for 10 sec to disable the Power Button Lockout feature.
	Video cable is improperly connected.	Connect the video cable properly. For more information, see Connecting the cables on page 12 .
	System is in Auto-Sleep Mode.	Press any key on the keyboard or move the mouse to inactivate the screen blanking utility.
	Video card is incompatible.	Open the OSD menu and select the Input menu. Set Auto- Switch Input to Off and manually select the input. or Replace the video card or connect the video cable to one of the computer's on-board video sources.
Image appears blurred, indistinct, or too dark.	Brightness setting is too low.	Open the OSD menu, and select Brightness to adjust the brightness scale as needed.
"Check Video Cable" is displayed on the screen.	Monitor video cable is disconnected.	Connect the appropriate video signal cable between the computer and monitor. Be sure that the computer power is off while connecting the video cable.
"Input Signal Out of Range" is displayed on screen.	Video resolution and/or refresh rate are set higher than the monitor supports.	Change the settings to a supported setting (see Preset display resolutions on page 32).
The monitor does not enter into a low-power sleep state.	The monitor's power saving control is disabled.	Open the OSD menu and select Power, select Auto-Sleep Mode, and then set auto-sleep to On.
"OSD Lockout" is displayed.	The monitor's OSD Lockout function is enabled.	Press and hold the left OSD control button for 10 seconds to disable the OSD Lockout function.
"Power Button Lockout" is displayed.	The monitor's Power Button Lockout feature is enabled.	Press and hold the Power button for 10 seconds to unlock the power button function.

Index

- connector repair, 17
- features, 4
- firmware updates, 3
- function test, 24
- how to order parts, 10
- illustrated parts catalog, 8
- parts, 8
- parts, ordering, 10
- power board removal, 16
- precautions, 2
- preparation for disassembly, 11
- RC removal, 12

- removal
 - power board, 16
 - RC, 12
- removal and replacement procedures, 11
- returning to customer, 3
- RoHS (2002/95/EC) requirements, 3
- safety information, 2
- serial number location, 7
- service information, 2
- spare parts, 8
- support and troubleshooting, 25
- troubleshooting, 25