

# IdeaCentre Mini 5 01IMH05 90Q70029GF

**Product**

IdeaCentre Mini 5 01IMH05

**Region**

WE

**Country/Region**

Germany

**Machine Type**

90Q7

**Processor**

Intel Core i5-10400T (6C / 12T, 2.0 / 3.6GHz, 12MB)

**Graphics**

Integrated Intel UHD Graphics 630

**Chipset**

Intel H470

**Memory**

1x 8GB SO-DIMM DDR4-2666

**Storage**

256GB SSD M.2 2242 PCIe NVMe

**Optane Memory**

None

**Optical**

None

**Ethernet**

Integrated 100/1000M

**Media Reader**

None

**WLAN + Bluetooth**

11ac, 2x2 + BT5.0

**Color**

Mineral Grey

**Keyboard**

None

**Mouse**

None

**System Fan**

None

**Power Supply**

90W Adapter Black

**Operating System**

None

**Bundled Software**

None

**Base Warranty**

2-year, Depot

**Bundled Service**

None

**End of Support**

2026-08-27

**Announce Date**

2020-07-27

 [WWW.LENOVO.COM](http://WWW.LENOVO.COM)

Lenovo may not offer the products, services or features discussed in this document in other countries. Lenovo may withdraw an offering at any time. Information is subject to change without notice. Consult your local representative for information on offerings available in your area.

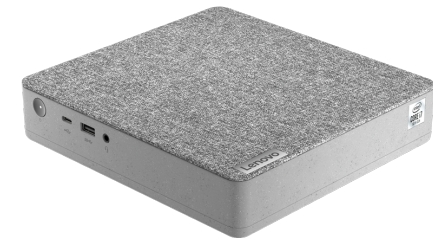
Lenovo reserves the right to change specifications or other product information without notice. Lenovo is not responsible for photographic or typographical errors. Lenovo provides this publication "as is" without warranty of any kind, either express or implied, including the implied warranties of merchantability or fitness for a particular purpose.



<https://psref.lenovo.com>

Visit psref website for the latest version of Product specifications Reference.

© Lenovo, 2020. All rights reserved.



Lenovo™

# IdeaCentre Mini 5 01MH05 Intel Platform Specifications

Product Specifications Reference (PSREF)

Processor	Intel® 10th Generation Intel Core™ i3 / i5 / i7 Processors						Security features	Power-on password, administrator password, hard-disk password, Security slot (for Kensington lock)
	Processor	Cores / Threads	Frequency (Base/Max)	Cache	Memory Types	Integrated Graphics	Keyboard	None
	Core i3-10100	4 / 8	3.6 / 4.3 GHz	6 MB	DDR4-2666	UHD 630	Mouse	None
	Core i3-10100T	4 / 8	3.0 / 4.0 GHz	6 MB	DDR4-2666	UHD 630	Mechanical	<ul style="list-style-type: none"> <li>Tiny (1L), Terrazzo Grey with Mineral Grey textile Cover</li> <li>(WxDxH) with bezel: 7.64" x 7.18" x 1.57"; 194mm x 182.4mm x 40mm</li> <li>Approx 3.258 lb (1.478kg), weight may vary by configuration</li> <li>Bay: One 2.5" bay for HDD</li> <li>Slot: None</li> <li>M.2 card slots: one for WLAN, one for M.2 SSD / Optane</li> </ul>
	Core i5-10400	6 / 12	2.9 / 4.3 GHz	12 MB	DDR4-2666	UHD 630	Power adapter	<i>Some:</i> 90 watts, autosensing <i>Some:</i> 135 watts, autosensing
	Core i5-10400T	6 / 12	2.0 / 3.6 GHz	12 MB	DDR4-2666	UHD 630	Limited warranty	<ul style="list-style-type: none"> <li>1-year, mail-in service / service upgrades available</li> <li>1-year or 2-year, depot repair service / service upgrades available</li> </ul>
	Core i7-10700T	8 / 16	2.0 / 4.5 GHz	16 MB	DDR4-2933	UHD 630	Preload	<b>Preloaded operating system</b> <i>Some:</i> Windows® 10 Home 64 <i>Some:</i> Windows 10 Pro 64 <b>Preloaded applications (only some listed)</b> <ul style="list-style-type: none"> <li>Microsoft Office</li> </ul>
Memory	32GB max, DDR4-3200*, two 260-pin SO-DIMM sockets, dual-channel capable * System automatically clocks down for the processors with lower memory controller						Environment	ENERGY STAR 8.0; ErP Lot 3; RoHS-compliant
Storage	<i>Some:</i> Hard Drive / SATA 6.0Gb/s, 2.5", 5400 rpm <i>Some:</i> M.2 SSD (2242 / 2280) / PCIe NVMe, PCIe 3.0 x2 or PCIe 3.0 x4 <i>Some:</i> Intel Optane™ Memory, PCIe 3.0 x2, M.2						Accessories	For compatible accessories, please go to <a href="http://smartfind.lenovo.com">http://smartfind.lenovo.com</a>
Optical (opt)	None							
Onboard SATA	One onboard SATA 6.0Gb/s connector							
Media reader	None							
Graphics	<b>Intel UHD Graphics 630</b> in processor, uses main memory, one HDMI™, one DP, supports 2 independent displays; Max resolution: 3840x2160 (HDMI)@30Hz; 3840x2160 (DP)@60Hz							
Chipset	<b>Intel H470 chipset</b>							
Front ports	One USB 3.2 Gen 1, one USB 3.2 Type-C Gen1, one headphone / microphone combo jack (3.5mm)							
Rear ports	Four USB 3.2 Gen 1, one DP, one HDMI, one ethernet (RJ-45), one power connector							
Audio support	High Definition (HD) Audio Realtek ALC233VB							
WLAN	<i>Some:</i> 11ac Wi-Fi + Bluetooth 5.0 combo adapter, M.2 card, 2x2 <i>Some:</i> 11ax Wi-Fi + Bluetooth 5.1 combo adapter, M.2 card, 2x2							
Bluetooth™	<i>Some:</i> Bluetooth 5.0 wireless, integrated in Wi-Fi + Bluetooth combo adapter <i>Some:</i> Bluetooth 5.1 wireless, integrated in Wi-Fi + Bluetooth combo adapter							
Ethernet	One gigabit ethernet port							

Note: The specifications above may not be available in all regions and might change by regions

Lenovo, August 2020



# IdeaCentre Mini 5 01IMH05

