

OVERVIEW



1. Power connector	9. Power button
2. DP out 1.4	10. Switch button
3. USB 3.2 Gen 2 (Always On)	11. USB-C 3.2 Gen 2
4. Ethernet (RJ-45)	12. USB 3.2 Gen 2
5. USB 2.0	13. Headphone / microphone combo jack (3.5mm)
6. USB 2.0	14. Camera connector
7. USB-C 3.2 Gen 2	15. Microphone
8. OSD adjustment joystick	

PERFORMANCE

Processor

Processor Family

AMD Ryzen™ 7 Processor

Processor

Processor Name	Cores	Threads	Base Frequency	Max Frequency	Cache	Memory Support	Processor Graphics	AI Engine
AMD Ryzen™ 7 7840HS	8	16	3.8GHz	5.1GHz	8MB L2 / 16MB L3	LPDDR5x-6400	AMD Radeon™ 780M Graphics	-
AMD Ryzen™ 7 8845HS	8	16	3.8GHz	5.1GHz	8MB L2 / 16MB L3	-	AMD Radeon™ 780M Graphics	AMD Ryzen™ AI

Operating System

Operating System**

- Windows® 11 Pro
- Windows® 11 Home
- Windows® 11 Home Single Language

Graphics

Graphics**

Graphics	Type	Memory	Connector	Max Resolution	Key Features
AMD Radeon™ 780M	Integrated	Shared	1x DP 1.4	3840x2160@60Hz(DP)	DirectX® 12
NVIDIA® GeForce RTX™ 4050	Discrete	6GB GDDR6	1x DP 1.4	3840x2160@60Hz(DP)	DirectX® 12

Monitor Support

Monitor Support

Supports up to 2 independent displays via native display and 1 external monitor; supports external monitor via DisplayPort™

Chipset

Chipset

AMD SoC (System on Chip) platform

Memory

Max Memory

- 16GB soldered memory, not upgradable
- 32GB soldered memory, not upgradable

Memory Slots

Memory soldered to systemboard, no slots, dual-channel

Memory Type

LPDDR5x-6400

Memory Protection

Non-ECC

Storage

Storage Support^[1]

Up to two drives, 1x M.2 SSD + 1x open M.2 SSD

- M.2 SSD up to 1TB each

Storage Type

Disk Type	Interface
M.2 2280 SSD	PCIe® NVMe®, PCIe® 4.0 x4

RAID

No support

Notes:

[1] The max capacity of each disk type is based on the test results with current Lenovo® storage offerings.

Removable Storage

Optical

None

Card Reader

No card reader

Multi-Media

Audio Chip

High Definition (HD) Audio

Speakers

Stereo speakers, 5W x2, JBL®-branded

Microphone

Dual-microphone array

Camera

- No camera
- Removable 5.0-megapixel + IR camera

Power Supply

Power Supply**

Power	Type	Efficiency	Key Features
170W	Adapter	89%	100V - 240V
300W	Adapter	89%	100V - 240V

DESIGN

Display

Display^[1]

Size	Resolution	Touch	Type	Brightness	Surface	Aspect Ratio	Contrast Ratio	Color Gamut	Refresh Rate	Viewing Angle (L/R/U/D)	Key Features
27"	QHD (2560x1440)	None	IPS	350nits	Anti-glare	16:9	1000:1	99% sRGB, DCI-P3 95%	60Hz	89°/89°/89°/89°	4-side borderless, TÜV Rheinland® Low Blue Light (Hardware Solution)

Touchscreen

Non-touch

Notes:

[1] IPS (in-plane switching) technology may refer to IPS, PLS, ADS, AHVA, AAS.

Input Device

Pen

No support

Keyboard

- Euterpe Wireless Keyboard, silver
- No keyboard

Mouse

- Euterpe Wireless Mouse, silver
- No mouse

Mechanical**Form Factor**

AIO (27 inches)

Dimensions (WxDxH)^[1]

614.8 x 242 x 513.35 mm (24.2 x 9.52 x 20.21 inches)

Packaging Dimensions (WxDxH)

745 x 293 x 590 mm (29.33 x 11.53 x 23.22 inches)

Weight^[2]

Models	Weight
Integrated graphics models	Around 16.45 kg (36.26 lbs)
Discrete graphics models	Around 17.08 kg (37.65 lbs)

Packaging Weight

- Discrete graphics models: Around 12.01 kg (26.47 lbs)
- Integrated graphics models: Around 11.39 kg (25.11 lbs)

Case Color

Cloud grey

Bays

None

Expansion Slots

Three M.2 slots (one for WLAN, two for SSD)

Stand

Monitor stand, supports -5° to +10° tilt, 0° to +90° pivot (only supports counterclockwise)

Notes:

[1] The system dimensions may vary depending on configurations.

[2] The system weight is approximate and based on results in Lenovo® lab, which varies depending on the source of component, variance of the distribution of each component, and manufacturing process. It may not be the exact weight for each specific model.

CONNECTIVITY**Network****Onboard Ethernet**

Gigabit Ethernet, 1x RJ-45

WLAN + Bluetooth®

Wi-Fi® 6E, 802.11ax 2x2 Wi-Fi® + Bluetooth® 5.1, M.2 card

Ports^[1]**Rear Ports**

- 1x USB-C® 3.2 Gen 2
- 1x USB 3.2 Gen 2 (Always On)
- 2x USB 2.0
- 1x DP out 1.4
- 1x Ethernet (RJ-45)
- 1x power connector

Top Ports

1x camera connector

Left Ports

- 1x USB-C® 3.2 Gen 2 (support data transfer, DP 1.4, and up to 95w PD)

- 1x USB 3.2 Gen 2
- 1x headphone / microphone combo jack (3.5mm)

Notes:

[1] The transfer speed of following ports will vary and, depending on many factors, such as the processing speed of the host device, file attributes and other factors related to system configuration and your operating environment, will be slower than theoretical speed.

USB 2.0: 480 Mbit/s;

USB 3.2 Gen 1 (SuperSpeed USB 5Gbps, formerly USB 3.0 / USB 3.1 Gen 1): 5 Gbit/s;

USB 3.2 Gen 2 (SuperSpeed USB 10Gbps, formerly USB 3.1 Gen 2): 10 Gbit/s;

USB4® 20Gbps / USB 3.2 Gen 2x2 (SuperSpeed USB 20Gbps): 20 Gbit/s;

USB4® 40Gbps (USB 40Gbps): 40 Gbit/s;

Thunderbolt™ 3/4: 40 Gbit/s.

SECURITY & PRIVACY

Security

Security Chip

Firmware TPM 2.0 integrated in SoC

BIOS Security

- Administrator password
- Power-on password

SERVICE

Warranty^[1]

Base Warranty**

- 1-year courier or carry-in service
- 2-year courier or carry-in service
- 3-year courier or carry-in service

Notes:

[1] The warranty upgrades may be bundled with some models, please check the "Included upgrade" column in the specific model's configurations. For more service extensions, please go to <https://smartfind.lenovo.com/>. To learn more details of warranty policy, please access <https://pcsupport.lenovo.com/warranty>.

ENVIRONMENTAL

Operating Environment

Temperature

- Operating: 5°C (41°F) to 35°C (95°F)
- Storage: -20°C (-4°F) to 60°C (140°F)

Relative Humidity

- Operating: 20% to 80%
- Storage: 10% to 90%

Altitude

- Operating: -15.2 m (-50 ft) to 3048 m (10,000 ft)
- Storage: -15.2 m (-50 ft) to 12192 m (40,000 ft)

CERTIFICATIONS

Green Certifications^[1]

Green Certifications

- ENERGY STAR® 8.0
- ErP Lot 3 and Lot 7
- GREENGUARD®

- RoHS compliant

Notes:

[1] The items listed under the "Green Certifications" section may not only refer to certification but also registration or self-declaration. For ESG & regulatory compliance documents, please visit <https://compliance.lenovo.com>.

Other Certifications

Other Certifications

TÜV Rheinland® Low Blue Light (Hardware Solution)

- Feature with ** means that only one offering listed under the feature is configured on selected models.
- Lenovo reserves the right to change specifications or other product information without notice. Lenovo is not responsible for photographic or typographical errors. LENOVO PROVIDES THIS PUBLICATION "AS IS," WITHOUT WARRANTY OF ANY KIND, EITHER EXPRESS OR IMPLIED, INCLUDING THE IMPLIED WARRANTIES OF MERCHANTABILITY OR FITNESS FOR A PARTICULAR PURPOSE. Some jurisdictions do not allow disclaimer of express or implied warranties in certain transactions, therefore this disclaimer may not apply to you.
- The specifications on this page may not be available in all regions, and may be changed or updated without notice.



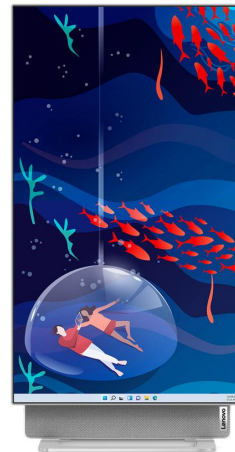
AMD



AMD



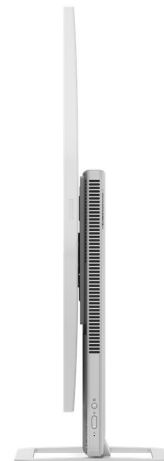
AMD



AMD



AMD



AMD