

# LISTEN

Manuel d'utilisation /User manual



Français : page 3  
English: page 4  
Deutsch : seite 5  
Italiano : pagina 6  
Español : página 7  
Português : página 8  
Nederland : pagina 9  
Русский : страница 10  
中文頁 : 第11頁  
한국의 : 12 페이지  
日本の : 13ページ

# LISTEN

## Caractéristiques / Specifications

2

Type	Casque fermé circum-aural
Impédance	32 $\Omega$
Sensibilité	122 dB SPL @ 1 kHz - / 1Vrms
THD 1mW (50 Hz : 10kHz)	<0.4% @ 1 kHz / 100 dB SPL
Réponse en fréquence	15 Hz -22 kHz
Capsule	40 mm (1 <sup>9</sup> / <sub>16</sub> " ) Mylar/Titane
Poids	273 g

Type	Closed over-ear headphones
Impedance	32 $\Omega$
Sensitivity	122dB SPL @ 1kHz - / 1Vrms
THD 1mW (50 Hz : 10kHz)	<0.4% @ 1kHz / 100dB SPL
Frequency response	15Hz -22kHz
Driver	40mm (1 <sup>9</sup> / <sub>16</sub> " ) Mylar/Titane
Poids	273g (0.60lb)

# LISTEN

## Manuel d'utilisation

Français

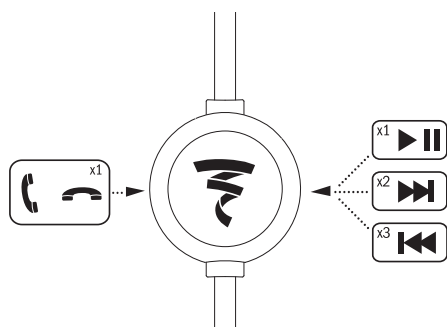
Enregistrez votre produit en ligne sur [www.focal.com/garantie](http://www.focal.com/garantie)  
et obtenez votre certificat de garantie.



### Contenu du packaging

- Casque
- Housse de transport
- Cordon détachable avec télécommande et microphone
- Adaptateur avion

### Télécommande



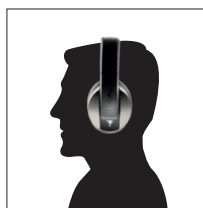
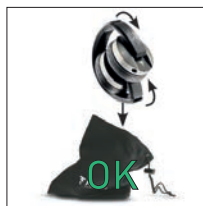
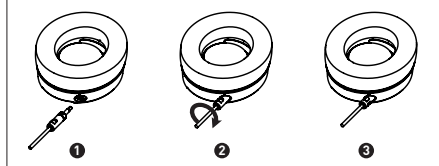
Fonctionne avec



Télécommande Universelle.  
Fonctionne avec tous les appareils.

### Utilisation

Connexion du câble au casque



Appuyer sur l'oreillette peut entraîner une augmentation de la pression à l'intérieur de l'écouteur et peut endommager le haut-parleur.

# LISTEN

User manual

English

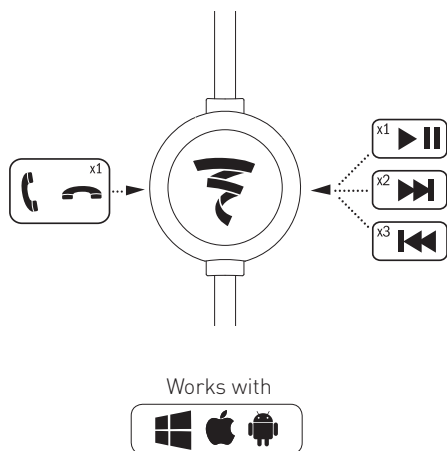
Register your product online at [www.focal.com/warranty](http://www.focal.com/warranty) and get your warranty certificate.



## Package contents

- Headphones
- Carrying case
- Removable cord including remote control
- Airplane adaptor

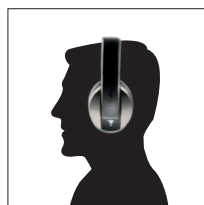
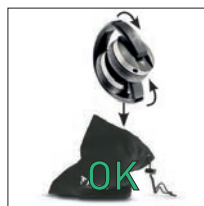
## Remote Control



Universal remote.  
Works with all devices.

## Instructions

### Cable wiring to the headphones



Do not squash the ear cup as this could increase the pressure inside and damage the driver.

# LISTEN

## Bedienungsanleitung

Deutsch

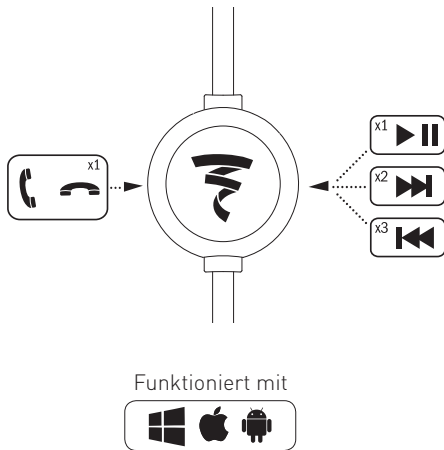
Registrieren Sie Ihr Produkt online unter [www.focal.com/warranty](http://www.focal.com/warranty) und erhalten Sie Ihren Garantieschein



### Inhalt der Verpackung

- Kopfhörer
- Tragetasche
- Abnehmbares Kabel einschließlich Fernbedienung
- Flugzeuganschluss

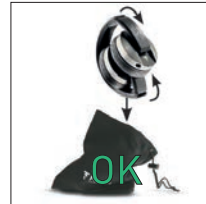
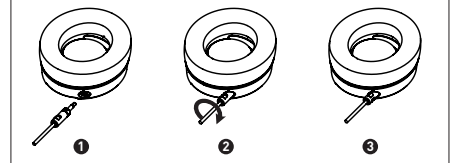
### Fernbedienung



Universal-Fernbedienung.  
Funktioniert mit allen Geräten.

### Verwendung

#### Kabelanschluss am Kopfhörer



Quetschen Sie die Ohrmuschel nicht, da dies den Druck innen erhöhen und den Schallwandler beschädigen könnte.

# LISTEN

## Manuale d'uso

Italiano

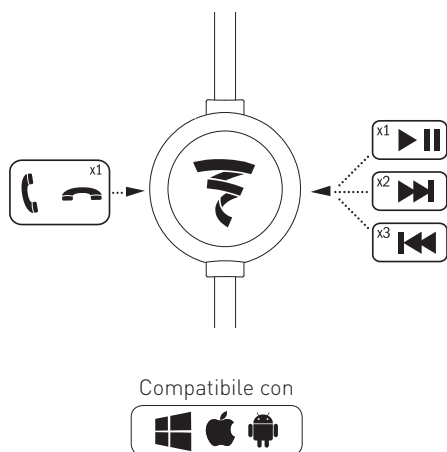
Registrate il vostro prodotto on-line su [www.focal.com/warranty](http://www.focal.com/warranty) e otterrete il vostro certificato di garanzia.



### Contenuto dell'imballo

- Cuffie
- Sacchetto da trasporto
- Cavo rimovibile con telecomando incluso
- Connettore per aeroplani

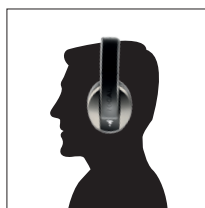
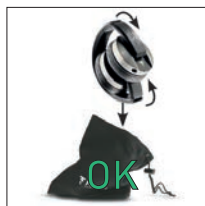
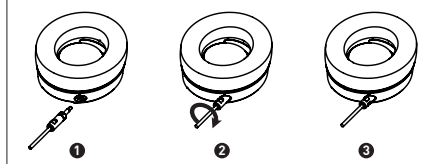
### Telecomando



Telecomando universale.  
Compatibile con tutti i dispositivi.

### Utilizzo

#### Cablaggio delle cuffie



Non schiacciare i padiglioni delle cuffie perché si potrebbe aumentare la pressione all'interno provocando danni al conduttore.

# LISTEN

## Instrucciones

Español

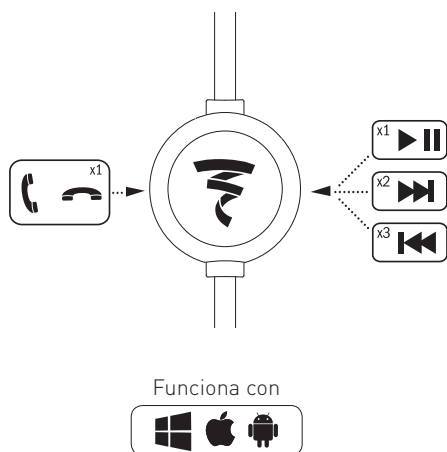
Registre su producto en línea en [www.focal.com/warranty](http://www.focal.com/warranty) y obtenga su certificado de garantía.



### Contenido del paquete

- Auriculares
- Bolsa de transporte
- Cable extraíble con control remoto
- Conector de avión

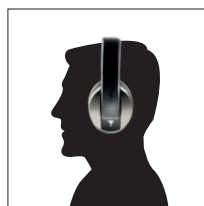
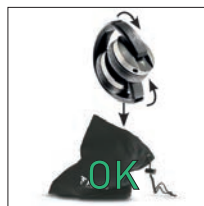
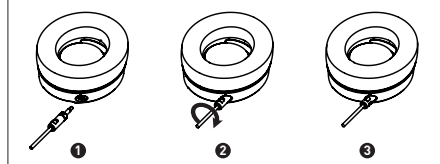
### Mando a distancia



Mando universal.  
Funciona con todos los dispositivos.

### Utilización

Cableado de los auriculares.



No aplaste el auricular, ya que podría aumentar la presión en el interior y dañar el controlador.

# LISTEN

## Manual de instruções

Português

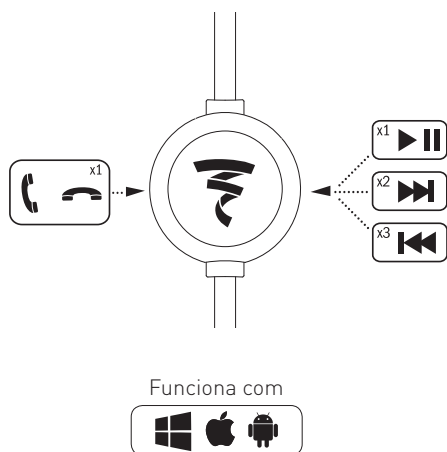
Registe o seu produto online em [www.focal.com/warranty](http://www.focal.com/warranty)  
e obtenha o seu certificado de garantia.



### Conteúdo da embalagem

- Auscultadores
- Saco de transporte
- Cabo removível com controlo remoto
- Terminal para avião

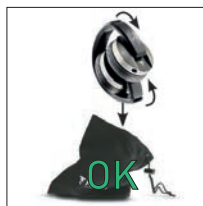
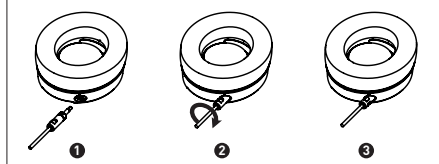
### Controlo remoto



Controlo remoto  
Funciona com todos os dispositivos.

### Utilizzo

#### Ligação do cabo aos auscultadores



Não pressione o auscultador, uma vez que tal poderá danificá-lo e aumentar a pressão no interior.



# LISTEN

Gebruikershandleiding

Nederland

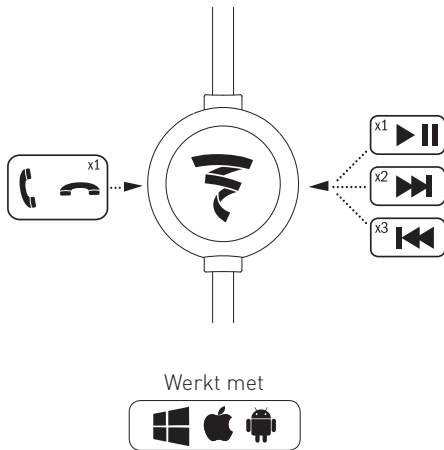
Registreer uw product online op [www.focal.com/warranty](http://www.focal.com/warranty)  
en ontvang uw garantiecertificaat.



## Inhoud van de verpakking

- Koptelefoon
- Draagtas
- Verwijderbare kabel inclusief afstandsbediening
- Vliegtuigstekker

## Afstandsbediening



Universele afstandsbediening.  
Werkt met alle apparaten.

## Gebruik

Bekabeling naar de koptelefoon



Druk niet op de oorschelp aangezien dit de druk binnenin kan verhogen en schade kan veroorzaken bij de drijver.

# LISTEN

сервис мануала

Русский

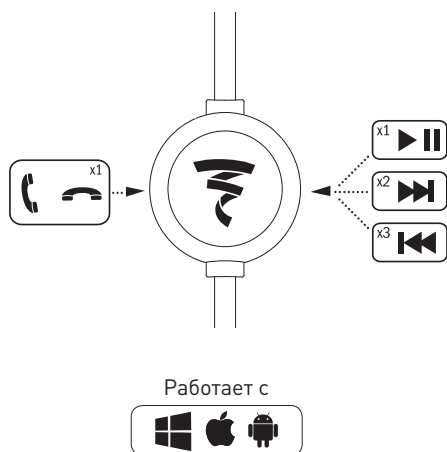
Зарегистрируйте ваш продукт онлайн на сайте: [www.focal.com/warranty](http://www.focal.com/warranty) и получите свое гарантийное свидетельство.



## Содержимое упаковки

- Наушники
- Чехол для переноски
- Съёмный шнур с пультом дистанционного управления
- Самолетный разъем

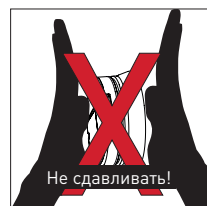
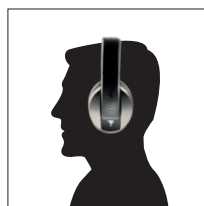
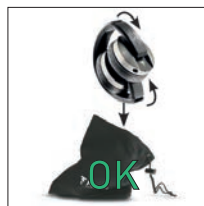
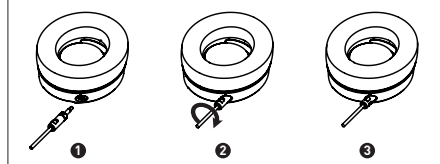
## Пульт дистанционного управления



Универсальный пульт дистанционного управления.  
Работает со всеми устройствами.

## Использование

### Подключение кабеля к наушникам



Не сдавливайте чашки наушников, так как это может привести к повышению давления внутри и повреждению динамика.

# LISTEN

用户手册

简体中文

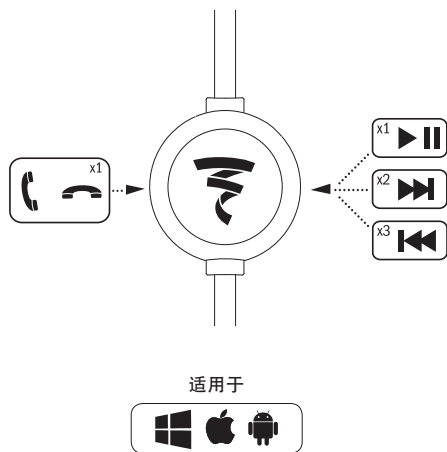
前往 [www.focal.com/warranty](http://www.focal.com/warranty) 注册您的产品，取得您的保修凭证。



## 盒装内容

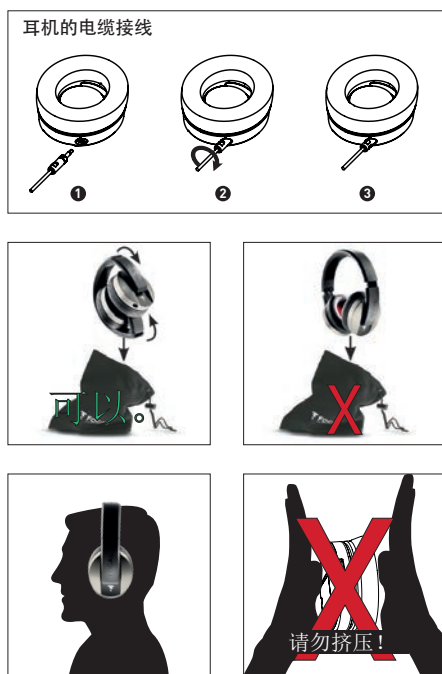
- 头戴式耳机
- 便携袋
- 可拆卸电源线，包括遥控器
- 航空适配器

## 遥控器



万能遥控器。  
适用于所有的设备。

## 使用说明



请勿挤压耳罩，因为这样会增加内部压力，并损坏其驱动单元。

# LISTEN

## 사용설명서

한국의

[www.focal.com/warranty](http://www.focal.com/warranty)

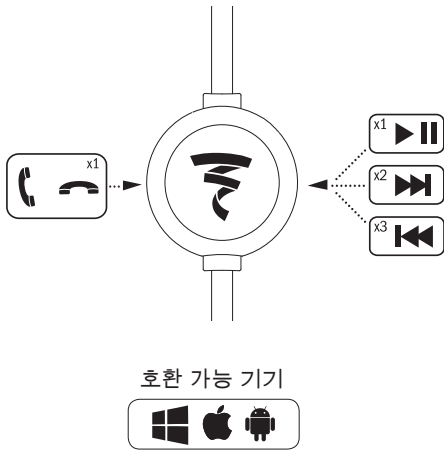
웹사이트에서 구입제품을 온라인 등록하시고, 개런티 증서를 획득하십시오.



### 팩키징 내용물

- 헤드폰
- 보관용 케이스
- 리모컨 기능이 포함된 탈부착 가능 케이블
- 항공기용 어댑터

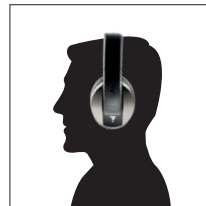
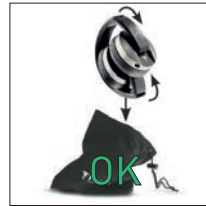
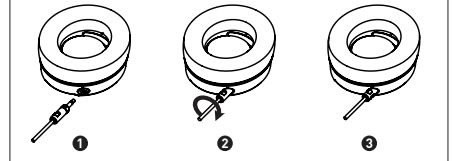
### 리모컨 사용 방법



범용 리모컨  
모든 기기에서 사용 가능

### 사용

#### 3케이블 연결 방법



제품 내부의 압력이 상승하여 드라이버가 손상될 수 있으니 이어컵을 누르지 마십시오.

# LISTEN

## ユーザーマニュアル

日本の

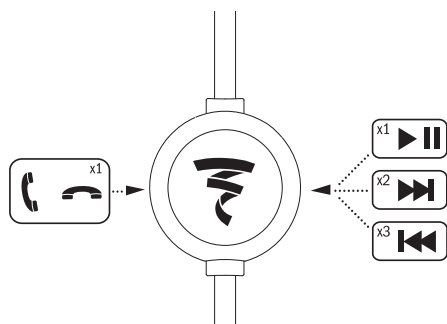
[www.focal.com/warranty](http://www.focal.com/warranty)にて製品のオンライン登録を行うと、保証書が発行されます。



### パッケージの内容

- ・ ヘッドフォン
- ・ キャリアーバッグ
- ・ 取り外し可能コード、リモートコントロール付き
- ・ 飛行機用コネクタ

### リモートコントロール



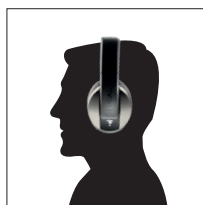
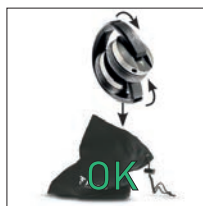
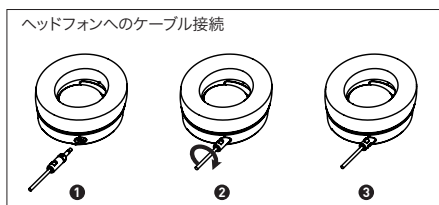
以下と使用可



ユニバーサルリモート  
全デバイスで使用可

### ご使用方法

ヘッドフォンへのケーブル接続



内部の圧力が上がり、ドライバーを壊す恐れがあるため、イヤークップを潰さないよう十分にご注意ください。



Focal-JMlab® - BP 374 - 108, rue de l'Avenir - 42353 La Talaudière cedex - France - [www.focal.com](http://www.focal.com)  
Tel. (+33) 04 77 43 57 00 - Fax (+33) 04 77 43 57 04 - SCBC-160629/1