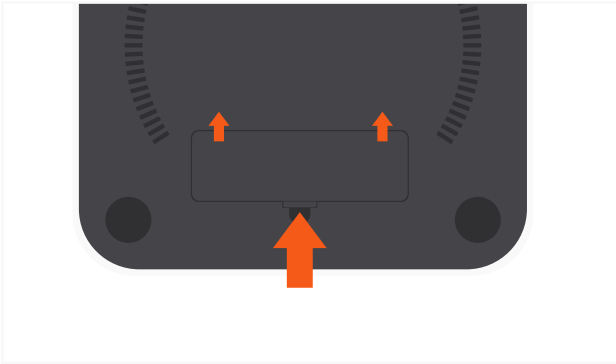


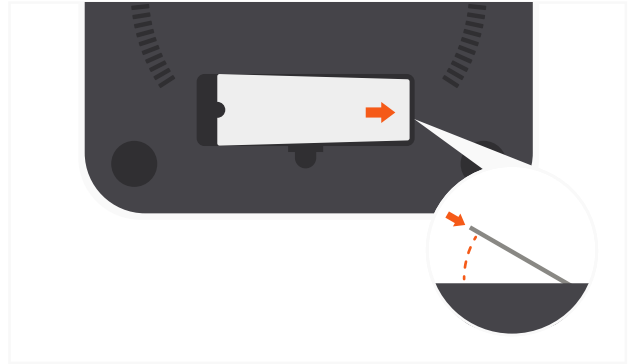
STAND & HUB FOR MAC MINI WITH SSD ENCLOSURE

- 1** Remove SSD enclosure cover on the bottom of the stand.



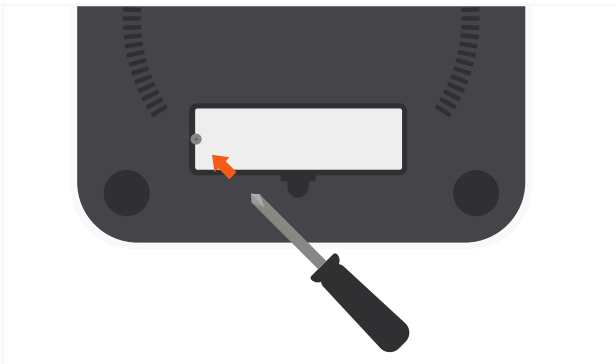
- 2** To install, insert the SSD at a slight angle and it should click into place.

Important: Compatible with only M.2 SATA SSD drives. Does not work with NVMe.

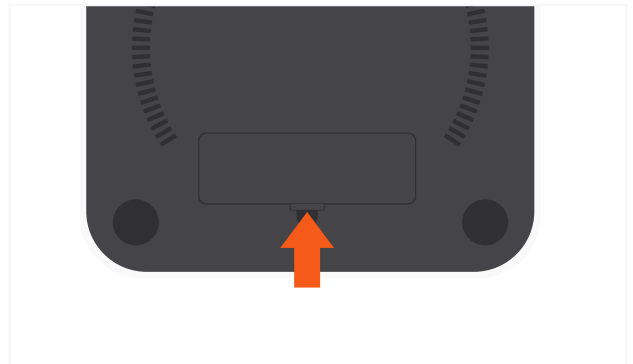


- 3** Use the included screwdriver and screw to secure the SSD.

To avoid stripping the screw, please do not overtighten.

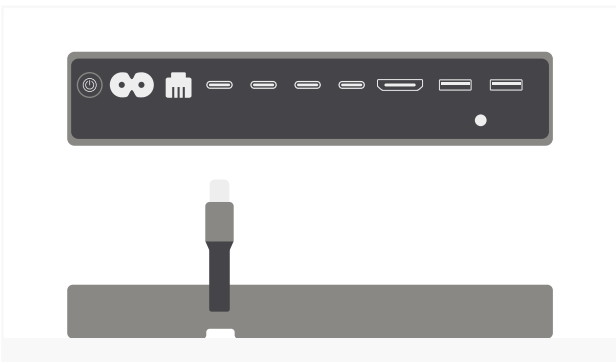


- 4** Put the enclosure cover back on and flip stand back over.



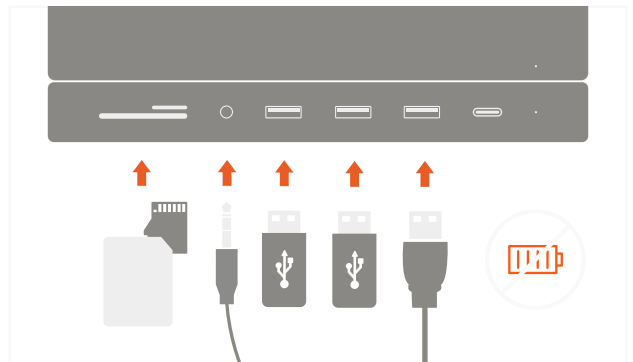
- 5** Place the stand on a flat surface and use its USB-C cable to connect to your Mac mini.

Supports Mac mini (2018 & newer)



- 6** Connect USB peripherals, SD cards, and headphones.

USB-A ports do not support charging or CD drives, including Apple SuperDrive.



- !** **Note:** If the SSD is new and not discovered, it may need to be formatted to be read by macOS. To reformat, open Disk Utility > Select the SSD installed > Erase > then select APFS > and then reformat the drive by erasing it.