

## PERFORMANCE

### Processor

Snapdragon® X Elite X1E-78-100, 12C / 12T, Max Turbo up to 3.4GHz, 42MB

### NPU

Qualcomm® Hexagon™ NPU integrated in Snapdragon® X Elite, up to 45 TOPS

### Graphics

Integrated Qualcomm® Adreno™ GPU

### Chipset

Qualcomm® SoC Platform

### Memory

32GB Soldered LPDDR5x-8448

### Memory Slots

Memory soldered to systemboard, no slots, dual-channel

### Max Memory

32GB soldered memory, not upgradable

### Storage

1TB SSD M.2 2242 PCIe® 4.0x4 NVMe®

### Storage Support<sup>[1]</sup>

One drive, up to 1TB M.2 2242 SSD

### Storage Slot

One M.2 2242 PCIe® 4.0 x4 slot

### Card Reader

None

### Optical

None

### Audio Chip

High Definition (HD) Audio

### Speakers

4 stereo speakers, 2W x2 (woofers), 2W x2 (tweeters), optimized with Dolby Atmos®, Smart Amplifier (AMP)

### Camera

FHD 1080p (2.0MP) + IR with E-shutter

### Microphone

4x, Array

### Battery

Integrated 70Wh

### Power Adapter

65W USB-C® (3-pin)

## DESIGN

### Display<sup>[2]</sup>

14.5" 3K (2944x1840) OLED 1000nits (Peak) / 500nits (Typical), Glossy / Anti-fingerprint, 100% DCI-P3, 100% sRGB, 90Hz, Eyesafe®, Dolby Vision®, DisplayHDR™ True Black 600, Glass, Touch

### Touchscreen

OGS, 10-point Multi-touch

### Color Calibration

Factory Color Calibration

### Keyboard

Backlit, German

### Touchpad

Buttonless glass surface multi-touch touchpad, supports Precision TouchPad (PTP), 80 x 135 mm (3.15 x 5.31 inches)

### Case Color

Cosmic Blue

### Surface Treatment

Aluminium Stamping (Anodized with Sandblasting)

### Case Material

Aluminium (Top), Aluminium (Bottom)

### Dimensions (WxDxH)<sup>[3]</sup>

325 x 225.15 x 12.9 mm (12.79 x 8.86 x 0.51 inches)

### Weight<sup>[4]</sup>

Starting at 1.28 kg (2.82 lbs)

## SOFTWARE

### Operating System

Windows® 11 Home (on ARM), German

### Bundled Software

Office Trial

## CONNECTIVITY

### Ethernet

No Onboard Ethernet

### WLAN + Bluetooth<sup>[5]</sup>

Wi-Fi® 7, 11be 2x2 + BT5.3

### Standard Ports<sup>[6]</sup>

3x USB-C® (USB4® 40Gbps), with USB PD 3.1 and DisplayPort™ 1.4

## SECURITY & PRIVACY

### Security Chip

Microsoft® Pluton TPM 2.0 Enabled

### Fingerprint Reader

None

### Other Security

- IR camera for Windows® Hello (facial recognition)
- E-shutter

## SERVICE

### Base Warranty

2-year, Courier or Carry-in

### Included Upgrade

<= 3 Months Premium Care, CO2 Offset 0.5 ton (2nd Generation Carbon Offset Projects)

## ACCESSORIES

### Bundled Accessories<sup>[7]</sup>

Lenovo® USB-C® 4-in-1 Hub

## CERTIFICATIONS

### Green Certifications<sup>[8]</sup>

- ENERGY STAR® 8.0
  - EPEAT™ Gold Registered
  - ErP Lot 6
  - ErP Lot 26
  - RoHS compliant
- ### Other Certifications
- Eyesafe® Certified 2.0
  - TÜV Rheinland® Low Blue Light (Hardware Solution)

### Mil-Spec Test

MIL-STD-810H military test passed (21 test items)

## MODEL

|                        |                |                       |              |
|------------------------|----------------|-----------------------|--------------|
| <b>TopSeller</b>       | : No           | <b>Announce Date</b>  | : 2024-05-21 |
| <b>EAN / UPC / JAN</b> | : 198153429967 | <b>End of Support</b> | : 2030-06-09 |

Note:

<sup>[1]</sup> The storage capacity supported is based on the test results with current Lenovo storage offerings.

<sup>[2]</sup> 1000nits HDR / 500nits SDR

<sup>[3]</sup> The system dimensions may vary depending on configurations.

<sup>[4]</sup> The system weight is approximate and based on results in Lenovo lab, which varies depending on the source of component, variance of the distribution of each component, and manufacturing process. It may not be the exact weight for each specific model.

<sup>[5]</sup> 6GHz Wi-Fi 7 operation is subject to the regulation rules in each country.

<sup>[6]</sup> Pending USB4 Certification July 2024, subject to.....

• Lenovo reserves the right to change specifications without notice.

To see more note information, please link to <https://psref.lenovo.com/Detail/2486?M=83ED0014GE>

## Premium Care - Advanced Support from Real People. Real Fast.



### REAL PERSON

Choose how you want to reach us - through the phone, chat or email - our expert technicians will take care of you.



### REAL FAST

Highly trained technicians will provide you real-time solutions, whatever the issue, on your first contact. If needed, our team will schedule an onsite visit for the next business day.



### HASSLE FREE

'Getting started' and 'how-to' assistance for hardware and software. Easy solutions that are simple to reach - that's how Premium Care delivers you the ideal support experience.



### PC HEALTH CHECK

Free annual PC Health Check that allows our experts to spot issues before you do so they can resolve them quickly and help you avoid PC problems.

## Accidental Damage Protection - Protection of your PC from the unexpected.

Experience shows that a significant portion of devices may be damaged (and not covered under warranty) in the first three years. Lenovo's Accidental Damage Protection service covers accidents beyond the system warranty such as drops, spills, bumps and even electrical surges. Make sure your new device has maximum protection, avoid unplanned costs and get peace of mind.

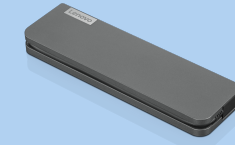
## Base Warranty – Included with the systems you purchase, default 1- or 3-year coverage window.

## Warranty Extensions & Upgrades – Service and protection that's right for your circumstances.

- Pick Up & Return Courier
- Onsite Support
- Technician Installed Customer
- Replaceable Unit Service
- International Warranty Upgrade

Lenovo may not offer the products, services or features discussed in this document in all regions. Lenovo may withdraw an offering at any time. Consult your local representative for information on offerings available in your area. Lenovo reserves the right to change specifications or other product information without notice. Lenovo is not responsible for photographic or typographical errors. Lenovo provides this publication "as is" without warranty of any kind, either express or implied, including the implied warranties of merchantability or fitness for a particular purpose.

## Recommended Accessories



### Lenovo USB-C Mini Dock\_US

40AU0065US

Expand Your Potential with An Universal Mini Dock; Lenovo understands that modern business depends on a wide variety of PC's and even brands to meet their business needs. To make this easier Lenovo USB-C Mini dock is ...



### Lenovo Powered USB-C Travel Hub

4X90S92381

Travel-Ready Productivity Powerhouse; One-stop travel docking is finally here. Connect and charge new and legacy devices wherever you happen to be. Sleek and compact, the Lenovo Powered USB-C Travel Hub fits unlimited...

For a full list of accessories and services, please visit:  
<https://smartfind.Lenovo.com>

Lenovo

PSREF  
Product Specifications  
Reference