



Philips  
LCD monitor with USB-C  
Dock

**B Line**  
27" (68.6 cm)  
Quad HD (2560 x 1440)



**272B7QUPBEB**

## Simplify your connections with USB-C docking monitor

This Philips QHD monitor with USB-C docking replaces cable clutter. View QHD images, secure connect to intranet and re-charge your notebook all at the same time with a single USB-C cable.

### Single cable USB-C connection

- Built-in USB-C docking station
- Connect your notebook with one USB-C cable
- Power and re-charge compatible notebook from the monitor
- View Crystalclear QHD 2560 x 1440 images
- USB 3.1 high-speed data transfer
- Built-in RJ-45 Ethernet gives data security

### Brilliant performance

- Ultra Wide-Color wider range of colours for a vivid picture
- IPS technology for full colours and wide viewing angles
- LowBlue Mode for easy-on-the-eyes productivity
- Narrow-border display for a seamless appearance

### Sustainable Eco-design

- PowerSensor saves up to 80% energy costs

**PHILIPS**

LCD monitor with USB-C Dock  
B Line 27" (68.6 cm), Quad HD (2560 x 1440)

272B7QUPBEB/00

# Highlights

## Built-in USB-C docking station



This Philips display features a built-in USB 3.1 type-C docking station with power delivery. Its slim, reversible USB-C connector allows for easy, one-cable docking. Simplify by connecting all your peripherals like KB, Mouse and your RJ-45 Ethernet cable to the monitor's docking station. Simply connect your notebook and this monitor with a single USB-C cable to watch high-resolution video and transfer super-speed data, while powering up and re-charging your notebook at the same time.

## Power and re-charge notebook

This monitor features a built-in USB-C connector that meets USB Power Delivery standard. With intelligent and flexible power management, you can now power up and/or re-charge your compatible\* Notebook directly from the Monitor using a single USB-C cable.

## Crystalclear QHD images

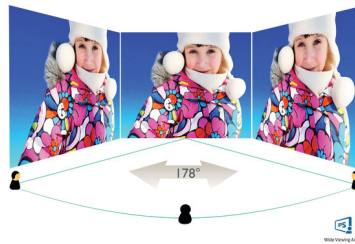
These latest Philips screens deliver CrystalClear, Quad HD 2560x1440 or 2560x1080 pixel images. Utilising high-performance panels with a high-density pixel count, enabled by high-bandwidth sources like DisplayPort, HDMI, Dual link DVI, these new displays will make your images and graphics come alive. Whether you are a demanding professional requiring extremely detailed information for CAD-CAM solutions, using 3D graphic applications or a financial wizard working on huge spreadsheets, Philips displays will give you CrystalClear images.

## Ultra Wide-Color Technology



Ultra Wide-Color Technology delivers a wider spectrum of colours for a more brilliant picture. The Ultra Wide-Color wider "colour gamut" produces more natural-looking greens, vivid reds and deeper blues. Bring media entertainment, images and even productivity more alive with vivid colours from Ultra Wide-Color Technology.

## IPS technology



IPS displays use advanced technology that gives you extra-wide viewing angles of 178/178 degrees, making it possible to view the display from almost any angle — even in 90-degree Pivot mode! Unlike standard TN panels, IPS displays gives you remarkably crisp images with vivid colours, making it ideal not only for Photos, films and web browsing, but also for professional applications that demand colour accuracy and consistent brightness at all times.

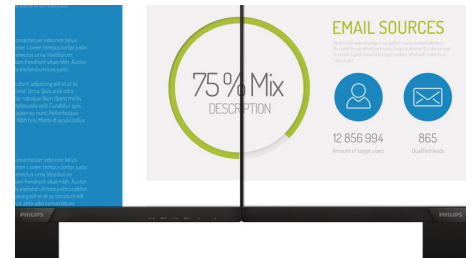
## LowBlue Mode



Studies have shown that just as ultra-violet rays can cause eye damage, shortwave-length blue

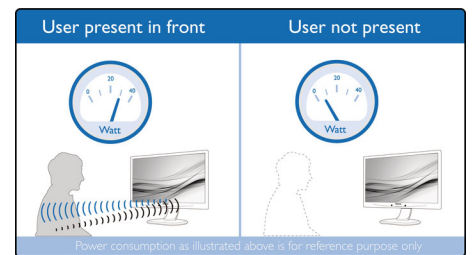
light rays from LED displays can cause eye damage and affect vision over time. Developed for wellbeing, the Philips LowBlue Mode setting uses a smart software technology to reduce harmful shortwave blue light.

## Ultra-narrow Border



The new Philips displays feature ultra-narrow borders which allow for minimal distractions and maximum viewing size. Especially suited for multi-display or tiling setups like gaming, graphic design and professional applications, the ultra-narrow border display gives you the feeling of using one large display.

## PowerSensor



PowerSensor is a built-in 'people sensor' that transmits and receives harmless infrared signals to determine if the user is present and then automatically reduces monitor brightness when then user steps away from the desk, cutting energy costs by up to 80 percent and prolonging monitor life



# Specifications

## Picture/Display

- LCD panel type: IPS technology
- Backlight type: W-LED system
- Panel Size: 27 inch / 68.5 cm
- Display Screen Coating: Anti-Glare, 3H, Haze 25%
- Effective viewing area: 596.7 (H) x 335.7 (V)
- Aspect ratio: 16:9
- Optimum resolution: 2560 x 1440 @ 60Hz
- Pixel Density: 109 PPI
- Response time (typical): 5 ms (Grey to Grey)\*
- Brightness: 350 cd/m<sup>2</sup>
- Contrast ratio (typical): 1000:1
- SmartContrast: 50,000,000:1
- Pixel pitch: 0.233 x 0.233 mm
- Viewing angle: 178° (H)/178° (V), @ C/R > 10
- Flicker-free
- Picture enhancement: SmartImage
- Colour gamut (typical): NTSC 114%\*, sRGB 132%\*
- Display colours: 16.7 M
- Scanning Frequency: 30 - 99 kHz (H) / 50 - 76 Hz (V)
- sRGB
- LowBlue Mode
- EasyRead

## Connectivity

- Signal Input: DisplayPort 1.2 x 1, HDMI 1.4 x 1
- Signal Output: DisplayPort out x 1
- USB:: USB-C 3.1 x 1 Gen 2 (upstream), USB 3.1 x 3 (downstream, w/fast charging)\*
- Audio (In/Out): Headphone out
- RJ45: Ethernet LAN (10M/100M/1G)
- Sync Input: Separate Sync, Sync on Green

## USB-C docking

- USB-C: Reversible plug connector
- Super speed: Data and Video transfer
- DP: Built-in Display Port Alt mode
- Power Delivery: USB PD version 2.0
- Max power delivery: Up to 60 watts (5 V/3 A; 7 V/3 A; 9 V/3 A; 12 V/3 A; 15 V/3 A; 20 V/3 A)

## Convenience

- Built-in Speakers: 2 W x 2
- User convenience: SmartImage, Input, PowerSensor, Menu, Power On/Off
- Control software: SmartControl
- OSD Languages: Brazil Portuguese, Czech, Dutch, English, Finnish, French, German, Greek, Hungarian, Italian, Japanese, Korean, Polish, Portuguese, Russian, Simplified Chinese, Spanish, Swedish, Traditional Chinese, Turkish, Ukrainian
- Other convenience: Kensington lock, VESA mount (100 x 100 mm)
- Plug and Play Compatibility: DDC/CI, Mac OS X, sRGB, Windows 10 / 8.1 / 8 / 7

## Stand

- Height adjustment: 150 mm
- Pivot: 90 degree
- Swivel: -175/175 degree
- Tilt: -5/30 degree

## Power

- ECO mode: 19.7 W (typ.)
- On mode: 24 W (typ.) (EnergyStar 7.0 test method)
- Standby mode: < 0.5 W (typ.)
- Off mode: Zero watts with Zero switch
- Power LED indicator: Operation - White, Standby mode - White (flashing)
- Power supply: Built-in, 100-240 VAC, 50-60 Hz

## Dimensions

- Product with stand (max height): 614 x 548 x 257 mm
- Product without stand (mm): 614 x 372 x 56 mm
- Packaging in mm (W x H x D): 690 x 458 x 252 mm

## Weight

- Product with stand (kg): 7.38 kg
- Product without stand (kg): 4.95 kg
- Product with packaging (kg): 10.16 kg

## Operating conditions

- Temperature range (operation): 0°C to 40°C °C
- Temperature range (storage): -20°C to 60°C °C
- Relative humidity: 20%–80% %
- Altitude: Operation: +12,000 ft (3658 m), Non-operation: +40,000 ft (12,192 m)
- MTBF (demonstrated): 70,000 hrs (excluded backlight)

## Sustainability

- Environmental and energy: PowerSensor, EnergyStar 7.0, EPEAT Gold\*, TCO edge, RoHS, WEEE
- Recyclable packaging material: 100 %
- Post-consumer recycled plastic: 85%
- Specific Substances: PVC/BFR free housing, Mercury free, Lead free

## Compliance and standards

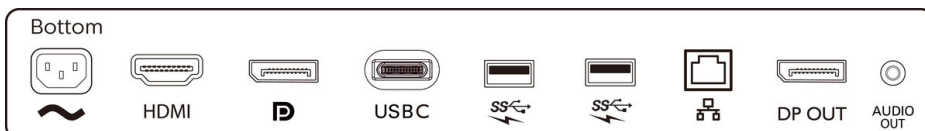
- Regulatory Approvals: CE Mark, FCC Class B, SEMKO, cETLus, CU-EAC, TUV Ergo, TUV/GS, EPA, UKRAINIAN, ICES-003, CCC, CECP, PSB, CEL, CB

## Cabinet

- Front bezel: Black
- Rear cover: Black
- Foot: Black
- Finish: Texture

## What's in the box?

- Monitor with stand
- Cables: HDMI cable, DP cable, USB-C to C cable, USB-C to A cable, Power cable
- User Documentation



Issue date 2018-08-30

Version: 1.0.1

12 NC: 8670 001 54525  
EAN: 87 12581 75248 4

© 2018 Koninklijke Philips N.V.  
All Rights reserved.

Specifications are subject to change without notice.  
Trademarks are the property of Koninklijke Philips N.V.  
or their respective owners.

[www.philips.com](http://www.philips.com)

\* For Video transmission via USB-C, your Notebook/device must support USB-C DP Alt mode

\* Activities such as screen sharing and online streaming over the Internet can impact your network performance. Your hardware and network bandwidth will determine the overall audio and video quality.

\* For USB-C power and charging function, your Notebook/device must support USB-C standard Power Delivery specifications. Please check with your Notebook user manual or manufacturer for more details.

\* "IPS" word mark / trademark and related patents on technologies belong to their respective owners.

\* Response time value equal to SmartResponse

\* NTSC Area based on CIE 1976

\* sRGB Area based on CIE 1931

\* EPEAT Gold is valid only where Philips registers the product. Please visit [www.epeat.net](http://www.epeat.net) for registration status in your country.

\* The monitor may look different from feature images.