

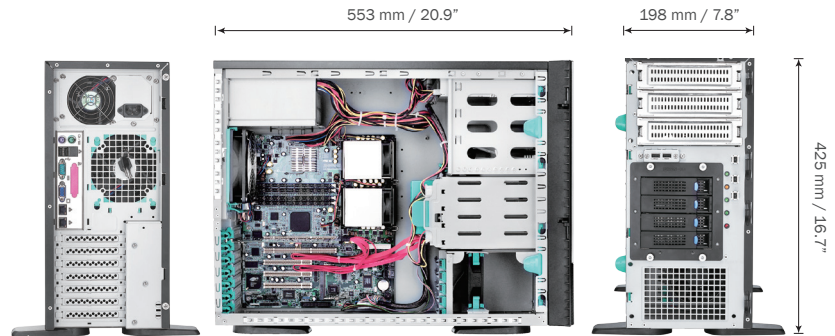
SR105

General Purpose Server Chassis



Features & Benefits

- Supports up to 12" x 13" M/B
- 4-bay 3.5" HDD cage with 12Gb/s SATA or mini-SAS HD backplane
- 6-bay 2.5" HDD cage with 6Gb/s mini-SAS backplane
- Tool-less installation on bezel, HDD cage, side cover and fans
- Supports key lock and Kensington security slot
- Rackable by slide rail (SR10566)
- Supports PS/2 single or mini-redundant PSU



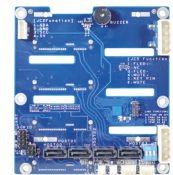
Specification

M/B Form Factor	• Extended ATX (12" x 13")
Dimension (D x W x H)	• 553mm x 198mm x 425mm, 20.9" x 7.8" x 16.7(Bezel not included)
Drive Bay	• Exposed: 3 x 5.25" • HDD cage: 4 x 3.5" (Fixed or H/S) or 6 x 2.5"(H/S)
PSU Form Factor	• PS/2 Single or Mini-redundant
Indicators	• 1 x Power Status, 1 x HDD Activity, 2x LAN Activity • 1 x Fan Failure and Overheat
Front Control	• Power On/Off, Alarm Mute, System Reset, 2 x USB2.0/ USB3.0 (Option)
Cooling Fans	• Front(option): 1 x 80mm or 92mm, Rear: 1 x 120mm, PWM
System Security	• Intrusion Switch, Key lock and Kensington security slot
Slot Opening	• 7 (5 x full length + 2 x half length)
Metal Thickness	• 0.8mm
Materials	• SECC
HDD Backplane	• 12Gb/s mini-SAS HD or SAS/SATA
Net Weight	• 9.0kg
Gross Weight	• 11.0kg
Cubic Feet	• 3.31
Container Info.*	• 20': 315, 40': 651, 40'H: 720

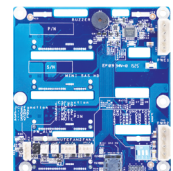
*Single Packing

12Gb/s Backplane

P/N	• 80H10220921A1
Dimension (W x H)	• 108 x 114mm
Backplane Type	• Passive
Host Interface	• 4 x SFF-8448
HDD Interface	• 4 x SFF-8680
SAS Expander	• N/A
Tool-less Installation	• N/A
Features	• SGPIO, Temperature Monitoring, Smart Fan, I2C



P/N	• 80H10220923A0
Dimension (W x H)	• 108 x 114mm
Backplane Type	• Passive
Host Interface	• 1 x SFF-8643
HDD Interface	• 4 x SFF-8680
SAS Expander	• N/A
Tool-less Installation	• N/A
Features	• SGPIO, Temperature Monitoring, Smart Fan, I2C



Optional Items

	Order Code	Description
Cable	26H03220907B0	USB3.0, 900mm, Rev. A0
HDD Cage	84H220910-062	4-bay, 3.5", Internal, 92mm fan
	84H220910-085	4-bay, 3.5", 12Gb/s SAS/SATA, 80mm fan
	84H220910-087	4-bay, 3.5", 12Gb/s mini-SAS HD, 80mm fan
	84H220910-084	6-bay, 2.5", 6Gb/s mini-SAS, 80mm fan
Slide Rail	84H210710-024	26" Ball Bearing
	84H210510-004	Rackmount ears, 2pcs/set, for SR10566 only

※PSU ※ M/B Support ※ I/O Gasket ※ Air Duct ※ (Detailed in CHENBRO websites)



3 x 5.25" bays for ODD or storage kits



Removable HDD cage



1 x rear 120mm PWM fan



Tool-less card retainers

Order Information

Order Code	M/B	Backplane	Cooling Fan(mm)	PCI Slot	PSU	Slide Rail
SR10566	12" x 13"	Option	1 x 120mm	5 x FF + 2 x HL	Option	Option
SR10566T3-C4	12" x 13"	12Gb/s SAS/SATA	1 x 120mm + 1 x 80mm	5 x FF + 2 x HL	Option	N/A
SR10569	12" x 13"	Option	1 x 120mm	5 x FF + 2 x HL	Option	N/A
SR10569-C0	12" x 13"	N/A	1 x 120mm + 1 x 92mm	5 x FF + 2 x HL	Option	N/A
SR10569T3-C4	12" x 13"	12Gb/s SAS/SATA	1 x 120mm+1 x 80mm	5 x FF + 2 x HL	Option	N/A