

Digitus® Dual design monitor mount, 2x 35", 2x 10 kg

DA-90471

EAN 4016032505891



Dual Design Monitor Mount, 2x35", 2x10 kg Mechanical Spring, VESA: 75x75, 100x100, Black

The fully mobile dual monitor desk mount is the perfect choice for anyone who wants to create an ergonomic, flexible and tidy workspace. Specially developed for the simultaneous use of two monitors, the mount is suitable for flat and curved screens with a diagonal of up to 35 inches. Each of the two sturdy support arms offers a maximum load capacity of 10 kg, so that even larger and heavier monitors can be held securely and reliably. A special highlight is the integrated mechanical spring with tool-free tension adjustment. This enables precise adjustment to the individual monitor weight and guarantees that the screens can be moved smoothly and effortlessly into the desired position. The built-in spring tension mechanism ensures smooth movements and stable fixation in any orientation - regardless of whether you want to rotate, tilt or adjust the height of your monitor. The well thought-out, space-saving design integrates effective cable management, which keeps annoying cables out of sight and ensures a tidy workplace. Thanks to the VESA quick-release function (75x75 mm and 100x100 mm), monitors can be attached or removed in no time at all, without the need for tools. The innovative quick-release coupling between the two arms also makes installation particularly quick and easy - ideal for anyone who values uncomplicated installation. For maximum flexibility, the mount offers two different fastening options: the robust clamp fastening for a quick hold on the edge of the table and the stable table feed-through for a permanently secure fastening. High-quality materials and precise workmanship guarantee a long service life and reliable stability - even with intensive daily use. Whether in the office, home office or for creative work environments - this dual monitor mount combines stability, functionality and modern design to create a well thought-out complete solution for more comfort and productivity in the workplace.

Fully mobile table mount for 2 screens up to 35" with a maximum weight capacity of 2x 10 kg - suitable for flat screens as well as curved displays

- Maximum monitor size: 35"
- Maximum load per arm: 10 kg
- Mechanical spring with tension adjustment (tool-free)
- VESA compatibility: 75x75, 100x100
- Suitable for flat and curved monitors
- Tested & certified ergonomic product - Certified by IGR (Institute for Health and Ergonomics)
- Tilting the monitor: 135° (+90° to -45°)
- Pivoting the monitor: 180° (+90° to -90°)
- Rotating the monitor: 360° (+180° to -180°)
- Full arm extension: 58.2 cm
- Mounting type: Clamp bracket or table feed-through
- Recommended tabletop thickness: Clamp: 5 - 70 mm, table bushing: 5 - 80 mm
- VESA Quick-Release function (quick-release fastener)
- Integrated cable management
- Material: steel, aluminum, plastic
- Dimensions: D 12.6 x W 105 x H 54.5 cm
- Weight: 4.9 kg
- Color: Black

Attributes

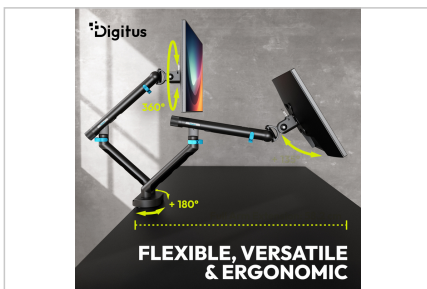
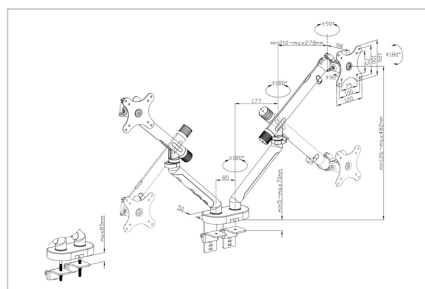
- Monitor weight (max.): 10 kg
- Mounting method: Clamp-mount
- Number of monitors: 2
- Size of monitors: up to 35"
- VESA mount: 75x75 mm, 100x100 mm

Package contents

- 1x monitor mount
- 1x mounting material & accessories
- 1x assembly instructions

Logistics						
	Number (pcs)	Weight (kg)	Depth (cm)	Width (cm)	Height (cm)	cm ³
Packaging Unit Carton	4	24.00	28.50	45.50	62.00	80,398.50
Packaging Unit Inside	1	6.00	0.00	0.00	0.00	0.00
Packaging Unit Single	1	6.00	13.20	29.60	44.10	17,230.80
Net single without Packaging	1	4.90	12.60	105.00	54.50	0.00

More images:





Safety notes

- Please read the entire manual before starting assembly and installation. Please contact your local dealer if you have any questions about the instructions or warnings.
- CAUTION: Use with products that exceed the permitted weight may result in damage or possible injury.
- Brackets should be fitted in accordance with the installation instructions. Incorrect installation can result in damage or injury.
- Use safety equipment and suitable tools. The product should only be installed by specialists.
- This product can be installed on timber-framed, solid concrete or stone walls.
- The load-bearing surfaces should be able to safely withstand the entire weight of appliances and all additional components.
- Only use the installation screws supplied and DO NOT TIGHTEN the screws TOO TIGHT.
- This product contains small parts that can cause a choking hazard if swallowed. Keep these parts away from children.
- Only use this product indoors. Using the product outdoors can lead to injury and damage.
- IMPORTANT: Before installation, please check all components received against the components list. If parts are damaged or missing, ask your local dealer for replacement parts.
- MAINTENANCE: Check the bracket regularly for safety and stability (preferably every three months).

EU responsible person

EU based economic operator ensuring the product complies with the required regulations.

ASSMANN Electronic GmbH
Auf dem Schüffel 3
Lüdenscheid, Germany
<https://www.assmann.com>
info@assmann.com