

Lenovo Legion 5 15IMH05 82AU00BGGE

Product

Lenovo Legion 5 15IMH05

Region

WE

Country/Region

Germany

Machine Type

82AU

Processor

Intel Core i5-10300H (4C / 8T, 2.5 / 4.5GHz, 8MB)

Graphics

NVIDIA GeForce GTX 1650 Ti 4GB GDDR6

Chipset

Intel HM470

Memory

2x 8GB SO-DIMM DDR4-2933

Storage

512GB SSD M.2 2242 PCIe NVMe 3.0x4

Display

15.6" FHD (1920x1080) IPS 250nits Anti-glare, 120Hz, 45% Gamut

Touchscreen

None

Optical

None

Media Reader

None

Ethernet

100/1000M

WLAN + Bluetooth

11ax, 2x2 + BT5.0

Bundled Accessories

None

Case Material

PC / ABS

Camera

720p

Microphone

2x, Array

Color

Phantom Black

Keyboard

Backlit, German

Fingerprint Reader

None

TPM

FW TPM 2.0

Battery

Integrated 60Wh

Power Adapter

170W Slim Tip

Operating System

Windows 10 Home 64, German

Bundled Software

Office Trial

Base Warranty

2-year, Depot

Bundled Service

None

EAN / UPC / JAN

195042905977

End of Support

2026-05-27

Announce Date

2020-04-08

 WWW.LENOVO.COM

Lenovo may not offer the products, services or features discussed in this document in other countries. Lenovo may withdraw an offering at any time. Information is subject to change without notice. Consult your local representative for information on offerings available in your area.

Lenovo reserves the right to change specifications or other product information without notice. Lenovo is not responsible for photographic or typographical errors.

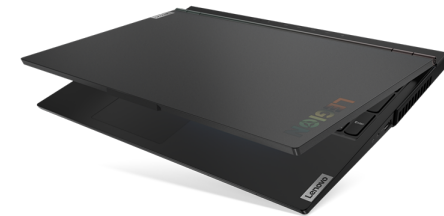
Lenovo provides this publication "as is" without warranty of any kind, either express or implied, including the implied warranties of merchantability or fitness for a particular purpose.



<https://psref.lenovo.com>

Visit psref website for the latest version of Product specifications Reference.

© Lenovo, 2020. All rights reserved.



Lenovo™

Lenovo Legion 5 15IMH05 Platform Specifications

Product Specifications Reference (PSREF)



Processor	10th Generation Intel® Core™ i5 / i7 Processor								Media reader Ports None Four USB 3.1 Gen 1 (one Always On), one USB 3.1 Type-C Gen 1 (with the function of DisplayPort 1.2), HDMI 2.0, Ethernet (RJ-45), headphone / microphone combo jack, security keyhole, AC power adapter jack <i>* Depending on many factors, actual data transfer speed may be lower than theoretical speed</i> Optional: Lenovo Legion M300 RGB Gaming Mouse (USB connector)
	Processor Number	# of Cores	# of Threads	Base Frequency	Max Turbo Frequency	Cache	Memory Types	Processor Graphics	
	i5-10300H	4	8	2.5 GHz	4.5 GHz	8MB	DDR4-2933	Intel UHD Graphics	
	i7-10750H	6	12	2.6 GHz	5.0 GHz	12MB			
i7-10875H	8	16	2.3 GHz	5.1 GHz	16MB				
Graphics	Integrated Graphics		Discrete Graphics (Memory)						Camera 720p HD, 1.0MP resolution, privacy shutter, fixed focus, integrated dual array microphone
	Intel UHD Graphics		NVIDIA® GeForce® GTX 1650 (4GB GDDR6 memory) NVIDIA GeForce GTX 1650 Ti (4GB GDDR6 memory)						
supports external digital monitor via HDMI or USB Type-C; supports three independent displays; Max resolution: 4096x2160@60Hz (HDMI); 3840x2160@30Hz (USB Type-C)									Audio support HD Audio, Realtek ALC3287 codec / Dolby Atmos® for Gaming Certification, Harman speakers, 2W x 2, dual array microphone, headphone / microphone combo jack
Chipset	Intel HM470 Chipset								
Memory	16GB max offering / 2933MHz DDR4, dual-channel capable, two DDR4 SO-DIMM sockets								Keyboard 6-row, multimedia Fn keys, white backlight or 4-Zone RGB LED backlight, numeric keypad, anti-ghost Touchpad Buttonless Mylar surface multi-touch touchpad
Display	<i>One of the following, configurable by model:</i> <ul style="list-style-type: none"> 15.6" (396mm) FHD (1920x1080), anti-glare, LED backlight, IPS, 250 nits, 16:9 aspect ratio, 45% NTSC gamut, refresh rate 120Hz 15.6" (396mm) FHD (1920x1080), anti-glare, LED backlight, IPS, 300 nits, 16:9 aspect ratio, 100% sRGB gamut, refresh rate 144Hz, Dolby® Vision 15.6" (396mm) FHD (1920x1080), anti-glare, LED backlight, IPS, 300 nits, 16:9 aspect ratio, 100% sRGB gamut, refresh rate 60Hz 15.6" (396mm) FHD (1920x1080), anti-glare, LED backlight, IPS, 500 nits, 16:9 aspect ratio, 100% sRGB gamut, refresh rate 240Hz, Dolby Vision 								
Multi-touch	None								Security chip Power-on password, hard-disk password, supervisor password, security keyhole Firmware TPM 2.0 integrated in chipset Fingerprint reader None
Storage	<i>Up to 2 drives (one HDD and one M.2 SSD):</i> <ul style="list-style-type: none"> HDD / SATA 6.0Gb/s, 2.5" wide, 7mm high M.2 2280 SSD / PCIe NVMe, PCIe 3.0 x 4 M.2 2242 SSD / PCIe NVMe, PCIe 3.0 x 4 								
Optical	None								Battery Integrated Li-Polymer 60Wh or 80Wh battery, supports Rapid Charge Pro (30 minutes 50%) Max battery life <i>MobileMark® 2018: 7.7 hr (80Wh) or 6.8 hr (60Wh)</i> <i>* Battery life varies significantly with hardware configurations, settings, usage, & other factors</i> AC adapter 170W slim tip AC adapter
Ethernet	Gigabit Ethernet connection								
WLAN	802.11ax 2x2 Wi-Fi + Bluetooth 5.0, M.2 Card								Preload (optional) <i>Preloaded operating system</i> <ul style="list-style-type: none"> Windows® 10 Home 64 <i>Preloaded applications (only some listed)</i> <ul style="list-style-type: none"> Microsoft Office Trial (with 30-day license) Microsoft Office Home and Business 2019 Microsoft Office Home and Student 2019 Microsoft 365 Family Microsoft 365 Personal Microsoft Office Professional 2019 Microsoft Office Personal 2019
Bluetooth™	Bluetooth 5.0 wireless, integrated in Wi-Fi + Bluetooth combo adapter								
Dimensions	<i>WxDxH:</i> 14.3" x 10.22" x 0.93-1.03"; 363.06mm x 259.61mm x 23.57-26.1mm								Limited warranty <i>One of the following, configurable by model:</i> <ul style="list-style-type: none"> 1-year depot repair service 1-year depot repair with 2-year system board repair service 2-year/1-yr battery depot repair service
Weight	Strating at 5.07 lb / 2.3 kg								
Case color	Phantom black								Environment ErP lot3; RoHS-compliant
Case material	PC/ABS plastic								
Lighting	Legion "Y" logo with white backlit on display cover								

Note: The specifications above may not be available in all regions.

Lenovo
June 2020

Lenovo Legion 5 15IMH05

