

dLAN® 1200+



devolo
The Network Innovation

devolo dLAN[®] 1200+

© 2017 devolo AG Aachen (Germany)

While the information in this manual has been compiled with great care, it may not be deemed an assurance of product characteristics. devolo shall be liable only to the degree specified in the terms of sale and delivery.

The reproduction and distribution of the documentation and software supplied with this product and the use of its contents is subject to written authorization from devolo. We reserve the right to make any alterations that arise as the result of technical development.

Trademarks

Linux® is a registered trademark of Linus Torvalds.

Ubuntu® is a registered trademark of Canonical Ltd.

Mac® and Mac OS X® are registered trademarks of Apple Computer, Inc.

Windows® and Microsoft® are registered trademarks of Microsoft, Corp.

devolo, dLAN® and the devolo logo are registered trademarks of devolo AG.

All other names mentioned may be trademarks or registered trademarks of their respective owners. Subject to change without notice. No liability for technical errors or omissions.

devolo AG

Charlottenburger Allee 67

52068 Aachen

Germany

www.devolo.com

Aachen, November 2017

Contents

1	Preface	6
1.1	About this manual	6
1.1.1	Intended use	7
1.1.2	CE conformity	7
1.1.3	Safety notes	7
1.2	devolo on the Internet	9
2	Introduction	10
2.1	What exactly is dLAN?	11
2.2	devolo—Up to speed on green IT	11
2.3	The dLAN 1200+	12
2.3.1	Sample applications	13
3	Installation	14
3.1	Package contents	14
3.2	System requirements	14
3.3	Functions	15
3.3.1	Monitoring light	15
3.3.2	Network connection	15
3.3.3	Encryption button	15
3.3.4	Integrated electrical socket	15
3.4	Connecting the dLAN 1200+	16
3.5	Software installation	17
3.5.1	Software for Windows	17
3.5.2	Software for Mac OS X	17
3.5.3	Software for Linux (Ubuntu)	17

4	dLAN network	18
4.1	Security in the dLAN	18
4.2	dLAN network encryption at the touch of a button	18
4.3	devolo Cockpit software	21
4.3.1	Encrypting a network with devolo Cockpit	24
5	Appendix	26
5.1	Bandwidth optimization	26
5.2	Disposal of old devices	26
5.3	Warranty conditions	27

1 Preface

Thank you for placing your trust in this dLAN 1200+.

The dLAN 1200+ allows you to set up your own home network with almost no effort. Because the clever dLAN technology transmits the data over the household electrical wiring, you do not have to lay any new cables.

1.1 About this manual





Carefully read all instructions before setting up the device and store the manual and/or installation guide for later reference.





After a brief introduction to "dLAN" and "Green IT" basics and a presentation of the dLAN 1200+ in **Chapter 2**, **Chapter 3** will cover successfully setting up your dLAN 1200+. **Chapter 4** explains how to configure your dLAN network. Tips for bandwidth optimization, information of environmental compatibility of the device and our warranty conditions can be found in **Chapter 5** and conclude the manual.

Description of the icons

This section contains a brief description of the icons used in this manual and/or on the rating plate, the de-

vice connector, as well as the icons used on the package:

Icon	Description
	Very important safety symbol that warns you of imminent electrical voltage which if not observed can result in serious injury or death.
	An important safety symbol that warns you of a potentially dangerous situation involving a burn hazard which can result in minor injuries or damage to property.
	An important note that should be observed which can potentially lead to material damages.
	The device may only be used indoors in dry conditions.

Icon	Description
	The manufacturer/distributing company uses the CE marking to declare that the product meets all applicable European regulations and has been subjected to the prescribed conformity assessment procedures.
	It is used to prevent the occurrence of waste electrical and electronic equipment and to reduce this type of waste through reuse, recycling and other forms of utilisation. It establishes minimum standards for handling waste electrical and electronic equipment in the EU.
	Additional information, background material and configuration tips for your device.
	Indicates a completed course of action

1.1.1 Intended use

Use the adapter as described in these instructions to prevent damage and injuries.



CAUTION! Damage to the device caused by ambient conditions
Only use device indoors in dry conditions

1.1.2 CE conformity



The product conforms to the basic requirements of **directives 2014/35/EU, 2014/30/EU, 2011/65/EU and 2009/125/EC.**

The product is intended for operation in the EU, Switzerland and Norway.

i A printout of the simplified CE declaration is included with the product. You can also find it online at www.devolo.com.

1.1.3 Safety notes

It is essential to have read and understood all safety and operating instructions before the devolo device is used for the first time; keep them safe for future reference.



DANGER! Electrical shock caused by electricity

Do not reach into the electrical socket, do not open the device and do not insert any objects into the electrical socket or into the ventilation openings

Users do not need to carry out any maintenance on devolo devices. In the event of damage, disconnect the devolo device from the mains supply by pulling it or its plug out of the electrical socket. Then contact qualified specialist personnel (after-sales service) exclusively.

Damage is deemed to have occurred, for example,

- if the power plug is damaged.
- if the devolo device has been showered with liquid (such as rain or other water).
- if the devolo device is inoperable.
- if the housing of the devolo device is damaged.

■ *Do not plug devolo devices directly into each other. Devices that are plugged into each other can experience a decrease in transmission rate.*



DANGER! Electric shock caused by electricity

Device must be plugged into a power socket with a connected earth wire

devolo devices may be operated only on a mains power supply as described on the **rating plate**.

To disconnect devolo devices from the mains supply, unplug the device from the electrical socket.

The power socket and all connected network devices should be easily accessible so that you can pull the power plug quickly if needed.



CAUTION! Heat development during operation

Certain housing components can become very hot in certain situations. Attach device so that it is touch-proof, observing optimal positioning

devolo devices should only be installed at locations that guarantee adequate ventilation. Slots and openings on the housing are used for ventilation:

- **Do not cover** devolo devices during operation.
- Do not place **any objects on** devolo devices.
- Do not insert **any objects** into the **openings** of devolo devices.
- devolo devices must **not** be placed directly **next to** a naked **flame** (such as fire or candles).
- devolo devices must **not be exposed to direct heat radiation** (e.g. radiator, direct sunlight).



CAUTION! Damage to housing from
cleaning agents containing solvents
Clean only electroless and with dry cloth

1.2 devolo on the Internet

For detailed information on our products and dLAN, visit www.devolo.com. The **Powerline** area not only contains product descriptions and documentation, but also updates of devolo software and your device's firmware.

If you have any further ideas or suggestions related to our products, please don't hesitate to contact us at support@devolo.com!

2 Introduction

dLAN is an intelligent, secure technology that lets you set up a home network easily, quickly and economical-

ly via your household electrical wiring, without the need for complex and expensive dedicated cabling.

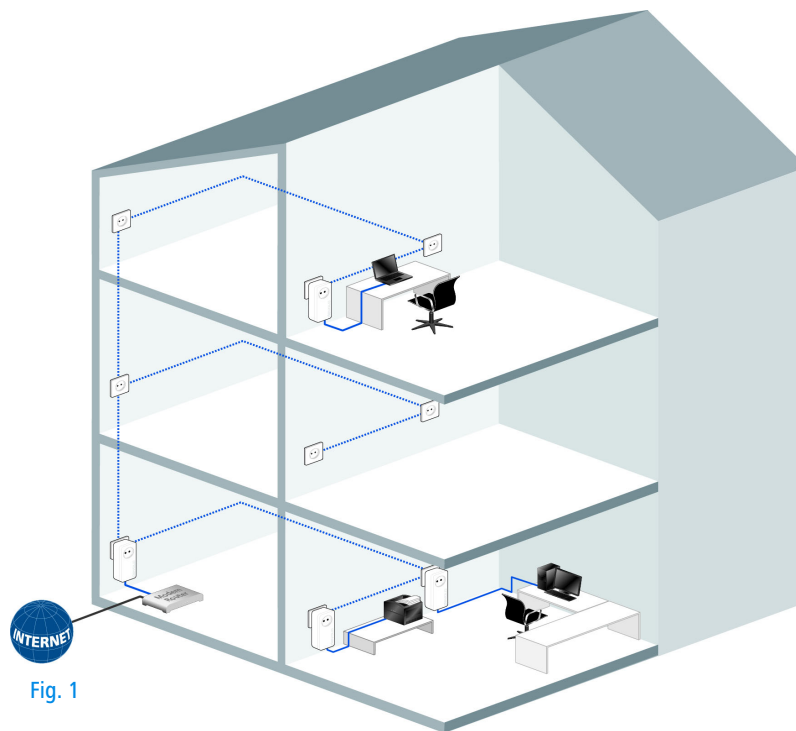


Fig. 1

2.1 What exactly is dLAN?

dLAN (**d**irect **L**ocal **A**rea **N**etwork) uses the household power grid to transfer data between computers equipped with suitable adapters and other network components. As a result, any power outlet can be used as a network access point. The data is modulated prior to transfer and sent as a signal via household power lines. State-of-the-art technology ensures that the power and data networks do not interfere with one another. Networking via dLAN is fast and secure. The data is encrypted using a key to prevent interception by third parties.

2.2 devolo—Up to speed on green IT

The topic everyone is talking about is green IT. devolo has an easy solution: the power saving mode, which comes standard with the home network adapters, sets the company apart from many competitors in the IT industry.

Developers at devolo, have for a long time kept a close eye on how much power dLAN adapters may consume. After all, a devolo network via electrical sockets should not only be convenient, but also require as little energy

as possible—particularly during times when it is not being used.

That devolo can satisfy the demand for energy efficiency is evidenced by the patented **power saving mode** in the devices. **It automatically reduces the energy consumption** when the computers in the dLAN network or connected equipment are switched off.

The power saving mode in the adapters is not only a tribute to **environmental protection** but also a real service to the customer. Most people tend to forget to regularly press the standby button on the hardware. **The patented technology in devolo adapters allows you to save energy without having to do anything.** And if less energy is consumed, your electric meter will turn more slowly. In other words, every minute the adapter is in power saving mode, you will save money.

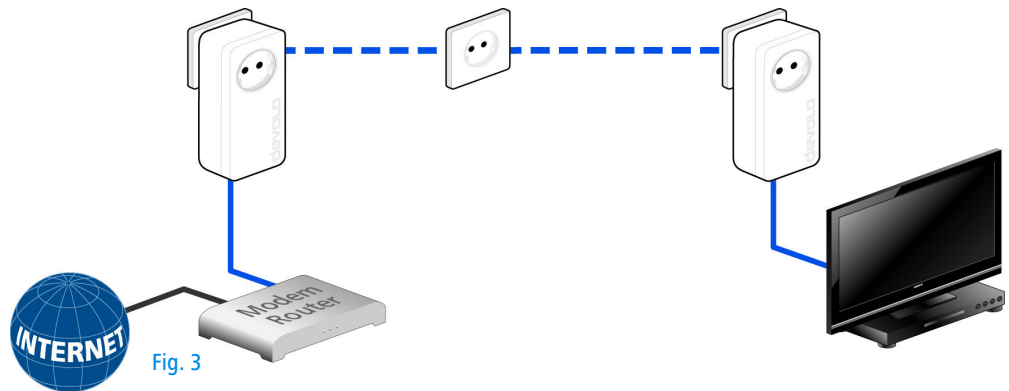
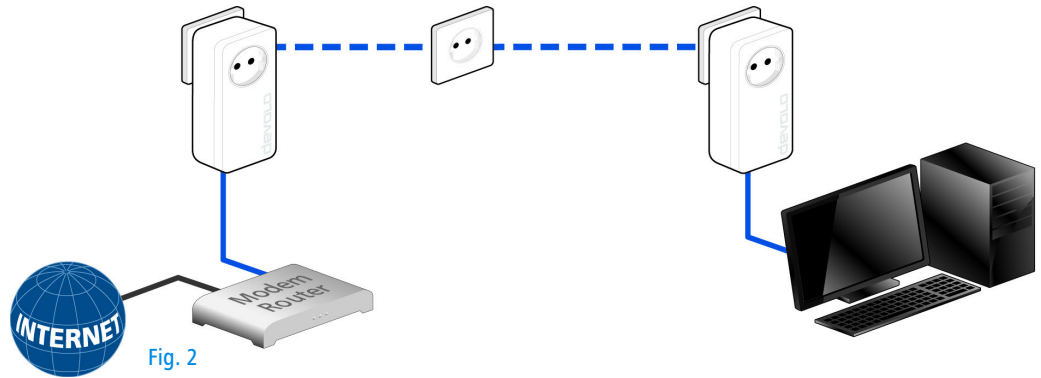


A dLAN adapter connected to a computer can only go into power saving mode if the network card of the switched-off computer is also inactive. If you are using a network card that remains active even when the computer is switched off, we recommend connecting the computer to an on/off switch using a multiple socket so that both the computer and the integrated network card are de-energised.

2.3 The dLAN 1200+

- **Your home network from the power socket.** Unpack. Plug it in. Get started. The easy way to connect using your home's power lines. Turn any power socket into an Internet access point
- The **fast transfer rate** and dLAN speeds up to **1200 Mbps** allow you to experience entertainment at the highest level. The **range+ technology** provides an even more stable Internet connection with significantly longer range.
- The automatic data prioritisation ("Quality of Service") ensures interference-free reproduction of voice and video data.
- The integrated electrical socket enables additional terminal devices or multiple sockets to be connected to the adapter just as a normal wall socket—no power supply is lost.
- The Gigabit LAN port allows you to connect an Internet-compatible device (e.g. a game console, television or media receiver) to the Internet at any time via network cable.
- Easy data encryption at the touch of a button or via devolo Cockpit.
- Minimal energy consumption with devolo's innovative PowerSave technology
- Compatible with all devolo dLAN adapters (200 Mbps, 500 Mbps, 600 Mbps and 1200 Mbps).
- Long range of up to 300 m between the adapters and reliable network speed for setting up a home network.

2.3.1 Sample applications



3 Installation

This chapter covers everything you need to know to set up your dLAN 1200+. It will explain connecting the dLAN 1200+ and its functions. We will also briefly introduce the devolo software.



Fig. 4 is country-specific

3.1 Package contents

Please ensure that the delivery is complete before beginning with the installation of your dLAN 1200+:

- **Single Kit:**
 - dLAN 1200+
 - Network cable
 - Hard copy of installation guide

or

- **Starter Kit:**
 - Two dLAN 1200+
 - Two network cables
 - Hard copy of installation guide

devolo AG reserves the right to change the package contents without prior notice.

3.2 System requirements

- **Operating systems:** Windows 7 Home Premium (32 bit/64 bit), Windows 8 (32 bit/64 bit), Windows 8 Pro (32 bit/64 bit), Linux (Ubuntu 12.04), Mac (OS X 10.6) and any other operating system with network support
- **Network connection**



Please note that your computer or other device must feature a network adapter with a network port.



To set up a dLAN network, you need two dLAN devices 200 Mbps, 500 Mbps, 600 Mbps and 1200 Mbps).

3.3 Functions

The dLAN 1200+ has a monitoring light (LED), one network jack and an encryption button.

3.3.1 Monitoring light

The monitoring light (LED) shows all of the statuses for the dLAN 1200+ by illuminating and/or flashing in different ways:

- The LED **flashes quickly in red** at uniform intervals if the dLAN 1200+ is connected to the **mains supply** but there is **no dLAN connection**.
- The LED **lights up in white** if the dLAN 1200+ is **ready to operate** and there is a **dLAN connection**.
- The LED **flashes quickly in white** at uniform intervals if the encryption process (**pairing**) is being performed in the dLAN network.

- The LED **flashes in white** at **irregular** intervals if the dLAN 1200+ is in **PowerSave mode**.
- The LED **flashes in red** at uniform intervals if the data transmission rate of the dLAN 1200+ is not optimal. For information to improve the data transmission rate, please see the chapter **5.1 Bandwidth optimization**.

3.3.2 Network connection

This is the connection point on the dLAN 1200+ for connecting it to a computer or another network device with the network cable (included).

3.3.3 Encryption button

Data encryption at the touch of a button; For more information on the functions of the encryption button, please see the chapter **4.2 dLAN network encryption at the touch of a button**.

3.3.4 Integrated electrical socket

If you connect additional network devices using a multiple socket, plug this multiple socket into the electrical socket of the dLAN 1200+. The integrated mains filter eliminates any noise of connected devices and significantly improves data transmission in the home network.



Please note that all dLAN devices to be connected to your network are also connected to your household electrical wiring. A dLAN device switches to Standby mode after a short while if no active network device such as a computer is connected to the network port. In Standby mode, the dLAN device cannot be accessed via the power supply grid. As soon as the network device (e.g. computer) connected to the network interface is switched on again, your dLAN device can also be reached again via the electrical wiring.

3.4 Connecting the dLAN 1200+

This section describes how to connect your dLAN 1200+ to a computer or another network device.



For the permitted voltage range for operating the device and the power consumption, refer to the label on the rear side of the device. Additional technical information is available in the download area at www.devolo.com.

- ① Use the included network cable to connect the dLAN 1200+ to the network port of your running computer or another network device.



Prevent tripping hazards when cabling.

- ② Plug the dLAN 1200+ into a free electrical outlet.



The power outlet and all connected network devices should be easily accessible so that you can pull the mains plug quickly if needed.

To disconnect the adapter from the mains supply, pull the device itself or its mains plug from the power outlet.



Additional network devices that are connected via a multiple socket are connected to the mains power supply by plugging the multiple socket into the integrated electrical socket of the dLAN 1200+.

- ③ Once you have connected at least two dLAN adapters as described above, your dLAN network has been set up. To secure your dLAN network, continue with the configuration as described in chapter **4 dLAN network**.

3.5 Software installation

3.5.1 Software for Windows

The devolo software is available to you at www.devolo.com/dLAN1200+. After you have downloaded the installation file to your PC, start it by double-clicking on it.

Use the installation wizard to install the devolo **Cockpit** for using the adapter with the Windows operating system. devolo **Cockpit** finds all reachable dLAN adapters in your dLAN network, displays information about these devices and encrypts your dLAN network individually.

During the installation process, you will be given the choice of installing all software components (**Standard installation**) or selecting individual ones (**Custom installation**).

- *To take full advantage of the functions of your device, we recommend installing all of the applications.*

You will be asked for permission to transfer anonymous performance data related to your dLAN adapter to devolo. The data sent to devolo pertains only to the performance values of your dLAN devices. The data is anonymised and will be used exclusively for statistical

purposes. By providing it, you can help us improve our products. You can find the installed software applications in the **Start** ➤ **Programs** ➤ **devolo** program group.

3.5.2 Software for Mac OS X

The devolo software is available to you at www.devolo.com/dLAN1200+. After you have downloaded the installation file to your PC, start it by double-clicking on it.

3.5.3 Software for Linux (Ubuntu)

The devolo software is available to you at www.devolo.com/dLAN1200+. After you have downloaded and installed the installation file to your PC, start the file.

4 dLAN network

4.1 Security in the dLAN

Before you can use the dLAN 1200+ in your dLAN network, first you have to connect it to other dLAN devices as a home network. Two specific pieces of information are especially important for this:

- Shared use of a dLAN password results in a delimited dLAN network.
- Shared use of the dLAN password serves as access control to the dLAN network as well as the encryption, and thereby the interception protection, of the transmitted data.

The dLAN password can be set in different ways:

- Automatically using the **encryption button** (see **4.2 dLAN network encryption at the touch of a button**)
- Manually using the **devolo Cockpit** program (see **4.3 devolo Cockpit software**).

4.2 dLAN network encryption at the touch of a button

To encrypt a dLAN network, in which all associated devices are equipped with an encryption button, simply

press the encryption button that is located on the device. Pressing this button will encrypt your dLAN network with a randomly generated password.



Fig. 5



Adapters cannot be configured while in Standby mode.

The following section contains exact instructions on the basis of possible network scenarios:

That's it! Your dLAN network is now protected against unauthorized access.

Encrypting a new dLAN network consisting of two adapters

Once both adapters have been successfully connected, press each encryption button for **1 second within two minutes** of one another.

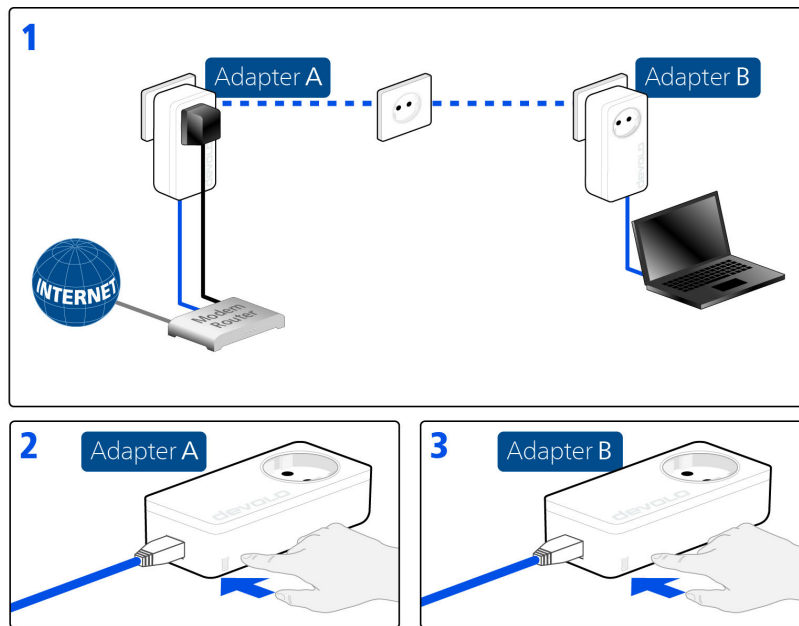


Fig. 6

Expanding an existing dLAN network with a new dLAN 1200+

If you have already secured your existing dLAN network using the encryption button, use the same method to integrate other adapters. Once you have successfully connected the new dLAN 1200+, first press the encryption button of one of your network's existing adapters (**1 second**), then press the encryption

button of your new dLAN 1200+ (**1 second**) within two minutes.

That's it! The new dLAN 1200+ is now integrated in your network. To integrate additional dLAN adapters in your network, repeat the above steps.

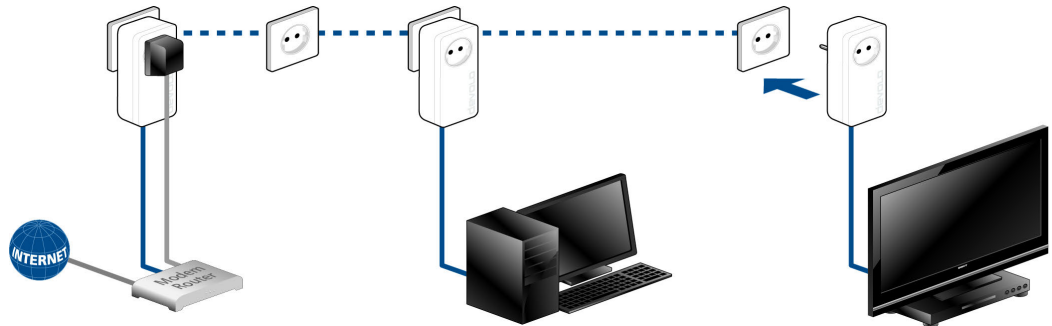


Fig. 7

Excluding a dLAN 1200+ from your network

To exclude a dLAN 1200+ adapter from an existing network, press its encryption button **for at least ten seconds**. The device will be assigned a new randomly generated password and will thus no longer be able to

access the network. To integrate the adapter in a different dLAN network, follow the steps described above, depending on whether you are setting up a new network or adding the adapter to an existing one.

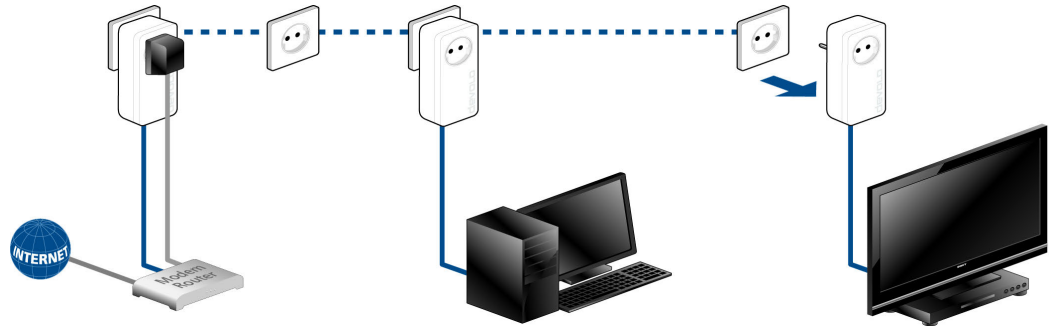
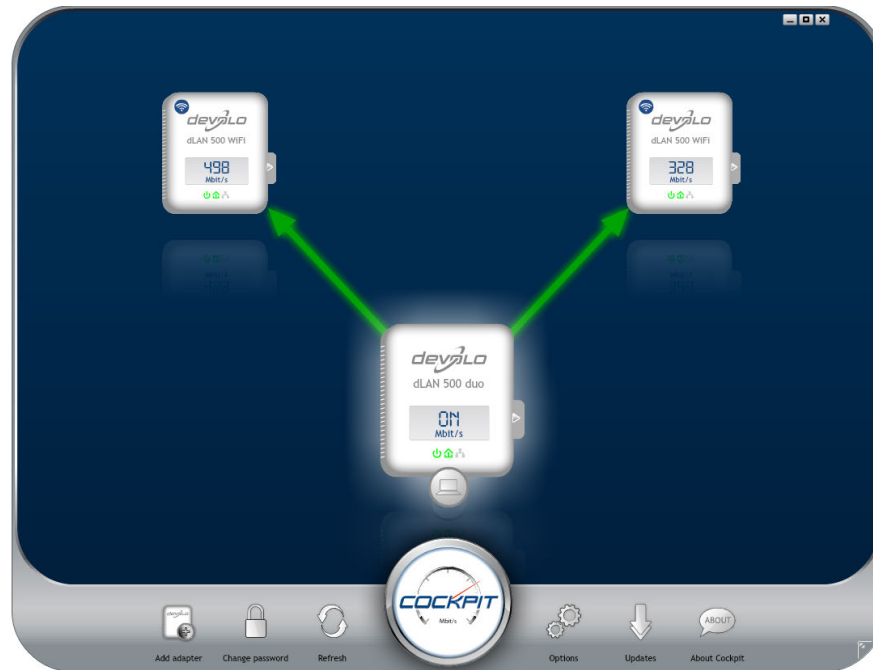


Fig. 8

4.3 devolo Cockpit software

devolo Cockpit is a monitoring and encryption program that detects all reachable dLAN devices in your home network and combines them in a secure network. Due to its logical graphic design, the devolo Cockpit is easy and intuitive to operate. After installing the devolo software, it can be found in the **Start ▢ Programs ▢ devolo** program group.



After starting the devolo Cockpit, all reachable dLAN devices in your home network will appear. This may take a moment.



All adapters found in the network appear with as adapter icon with a corresponding product name. The adapter in the middle of the dLAN network identified with

the symbol shown here symbolises your locally connected device. If you have multiple dLAN devices connected locally, you can jump back and forth between them. Clicking an adapter icon with the mouse enables the corresponding dLAN device and highlights it.

The coloured connecting lines of the adapters illustrate the current transmission quality:

- **Green:** the network connection is suitable for HD video streaming.
- **Orange:** the network connection is suitable for SD video streaming and online gaming.
- **Red:** the network connection is suitable for simple data transfer and Internet access.

If data transmission from one device to another is actually taking place, the data rate is displayed on the respectively highlighted adapter.

Settings and functions

You can configure settings for the respectively highlighted device or for the network

- via the buttons at the bottom edge of the screen
- or via tabs arranged at the side of each adapter.

You can always use the **Refresh** button to display the current status of devices that have been found (if this hasn't happened automatically).

By means of the **Options** button or the corresponding tabs of the respective adapter, you can learn device information such as the firmware version used and the individual MAC address.

Options are given like assigning an **additional name**, resetting the respective device to the **factory default settings** or **removing a device** from the existing dLAN network.



The above-mentioned setting options vary depending on the function and features of your device.

You can also specify whether information on the performance of your dLAN adapters will be transferred to devolo.



The data sent to devolo pertains only to the performance values of your dLAN devices. The data is anonymised and will be used exclusively for statistical purposes. By providing it, you can help us improve our products.

The **Troubleshooting Guide** includes installation instructions and information about how to connect your devices optimally with one another.

Via the **Updates** button you can carry out automatic firmware updates from our website, www.devolo.com. This procedure requires an active Internet connection.

4.3.1 Encrypting a network with devolo Cockpit

If you use dLAN devices **without an encryption button**, data can be encrypted only via **devolo Cockpit**.



Before the networking procedure, note the security IDs of all dLAN adapters. This unique identifier of each dLAN device is located on the label on the housing. It consists of 4 x 4 letters separated by dashes (e.g. ANJR-KMOR-KSHT-QRUV). Ensure that all dLAN adapters are connected to the power grid and computers or other network components as appropriate.

Scan for local adapter

After devolo Cockpit is started, it searches for the dLAN adapter connected directly to your computer first.

Adding an adapter

Add all the dLAN devices you want to your dLAN network by selecting the **Add adapter** button. You will need the **16-character** security IDs of the adapters from the label on the housing. Enter it now in the **Security ID** field and confirm with **OK**. If a security ID is correct and the device can be reached in the dLAN network, it will be added to your network of configured adapters and also displayed in the program.

Entering a network password

After you have added all the dLAN devices you want to your dLAN network, select the **Change password** button to assign a shared network password that will apply for all registered adapters in your personal home network.

You can choose between your own password, a random password and the default password. To define your own password with a length of at least eight characters, enter this into the **Network password** text field. Alternatively, you can have a randomly selected, highly secure password assigned using the **Generate secure password** button. Use the **Factory default password** button to reset the dLAN adapter to the default password. Normally, the display of the password is hidden for security reasons. If you enable the option **Show characters**, the current password is displayed in legible form in the text field.



The factory default password is HomePlugAV. Assigning a specific password to a single adapter will exclude it from the remaining dLAN network.

If **devolo Cockpit** is called up again later after a successful initial installation, for example to **integrate a new adapter** into a network, the application remem-

bers the devices that were entered earlier. Enter the new device as described in the **Adding an adapter** section. The **current network password** is assigned **automatically** to the newly added device.

5 Appendix

5.1 Bandwidth optimization

To significantly improve the transmission capacity of the network, we recommend that you comply with the following "connection rules":

- Plug the device directly into a wall socket. Avoid multiple sockets.

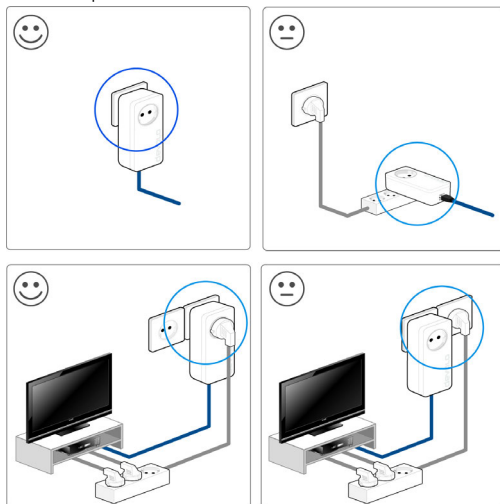


Fig. 9

- You should connect all additional network devices that are connected to a multiple socket to the mains power supply via the electrical socket integrated into the dLAN 1200+.
- To take full advantage of the filter function of the dLAN 1200+ and to improve data transmission in the network, always plug the multiple socket into the electrical socket of the dLAN 1200+.

5.2 Disposal of old devices

To be used in the countries of the European Union and other European countries with a separate collecting system:



The icon with crossed-out wastebasket on the device means that this product is an electrical or electronic device that falls within the scope of application of the European Community WEEE Directive. These types of devices may no longer be disposed of with household waste. Rather they can be given to a municipal collection point free of charge. Contact your municipal government to find out the address and hours of the nearest collection point.

5.3 Warranty conditions

The devolo AG warranty is given to purchasers of devolo products in addition to the warranty conditions provided by law and in accordance with the following conditions:

1 Warranty coverage

- a) The warranty covers the equipment delivered and all its parts. Parts will, at devolo's sole discretion, be replaced or repaired free of charge if, despite proven proper handling and adherence to the operating instructions, these parts became defective due to fabrication and/or material defects. Alternatively, devolo reserves the right to replace the defective product with a comparable product with the same specifications and features. Operating manuals and possibly supplied software are excluded from the warranty.
- b) Material and service charges shall be covered by devolo, but not shipping and handling costs involved in transport from the buyer to the service station and/or to devolo.
- c) Replaced parts become property of devolo.
- d) devolo is authorized to carry out technical changes (e.g. firmware updates) beyond repair and replacement of defective parts in order to bring the equipment up to the current technical state. This does not result in any additional charge for the customer. A legal claim to this service does not exist.

2 Warranty period

The warranty period for this devolo product is three years. This period begins at the day of delivery from the devolo dealer. Warranty services carried out by devolo do not result in an extension of the warranty period nor do they initiate a new warranty period. The warranty period for installed replacement parts ends with the warranty period of the device as a whole.

3 Warranty procedure

- a) If defects appear during the warranty period, the warranty claims must be made immediately, at the latest within a period of 7 days.
- b) In the case of any externally visible damage arising from transport (e.g. damage to the housing), the person carrying out the transportation and the sender should be informed immediately. On discovery of damage which is not externally visible, the transport company and the sender are to be immediately informed in writing, at the latest within 3 days of delivery.
- c) Transport to and from the location where the warranty claim is accepted and/or the repaired device is exchanged, is at the purchaser's own risk and cost.
- d) Warranty claims are only valid if a copy of the original purchase receipt is returned with the device. devolo reserves the right to require the submission of the original purchase receipt.

4 Suspension of the warranty

All warranty claims will be deemed invalid

- a) if the label with the serial number has been removed from the device,
- b) if the device is damaged or destroyed as a result of acts of nature or by environmental influences (moisture, electric shock, dust, etc.),
- c) if the device was stored or operated under conditions not in compliance with the technical specifications,
- d) if the damage occurred due to incorrect handling, especially to non-observance of the system description and the operating instructions,
- e) if the device was opened, repaired or modified by persons not contracted by devolo,
- f) if the device shows any kind of mechanical damage, or
- g) if the warranty claim has not been reported in accordance with 3a) or 3b).

5 Operating mistakes

If it becomes apparent that the reported malfunction of the device has been caused by unsuitable hardware, software, installation or operation, devolo reserves the right to charge the purchaser for the resulting testing costs.

6 Additional regulations

The above conditions define the complete scope of devolo's legal liability.

- a) The warranty gives no entitlement to additional claims, such as any refund in full or in part. Compensation claims, regardless of the legal basis, are excluded. This does not apply if e.g. injury to persons or damage to private property are specifically covered by the product liability law, or in cases of intentional act or culpable negligence.
- b) Claims for compensation of lost profits, indirect or consequential detriments, are excluded.
- c) devolo is not liable for lost data or retrieval of lost data in cases of slight and ordinary negligence.
- d) In the case that the intentional or culpable negligence of devolo employees has caused a loss of data, devolo will be liable for those costs typical to the recovery of data where periodic security data back-ups have been made.
- e) The warranty is valid only for the first purchaser and is not transferable.
- f) The court of jurisdiction is located in Aachen, Germany in the case that the purchaser is a merchant. If the purchaser does not have a court of jurisdiction in the Federal Republic of Germany or if he moves his domicile out of Germany after conclusion of the contract, devolo's court of jurisdiction applies. This is also applicable if the purchaser's domicile is not known at the time of institution of proceedings.
- g) The law of the Federal Republic of Germany is applicable. The UN commercial law does not apply to dealings between devolo and the purchaser.

Index

C

CE 7

D

Disposal of old devices 26

dLAN network 18

E

Encryption button 15, 18

F

Factory default password 24

G

Generate secure password 24

Green IT 11

I

Integrated electrical socket 15

Integrating the new adapter into the network 24

L

Linux 17

M

Mac OS X 17

Monitoring light (LED) 15

N

Network connections 15

Network password 24

P

Package contents 15

Power saving mode 11

S

Safety notes 7

Security ID 24

U

Ubuntu 17

W

Warranty 27

Windows 17