

**Safety Instructions**

0,1,2,4,6,7,8,9,11,15,  
20,22,26,27



**Info**

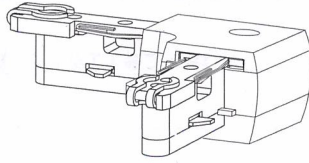
[www.paulmann.com](http://www.paulmann.com)

Paulmann Licht GmbH  
Quezinger Feld 2  
31832 Springe  
Germany

[www.paulmann.com](http://www.paulmann.com)

Art.-Nr.: 976.48  
976.49  
976.50

(+MA173)PH12/18



1x

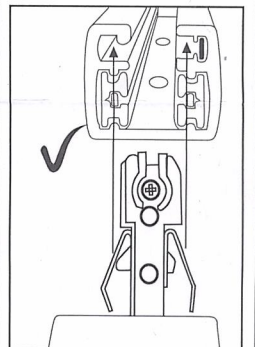
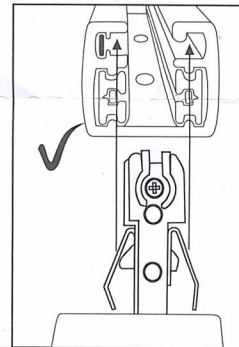
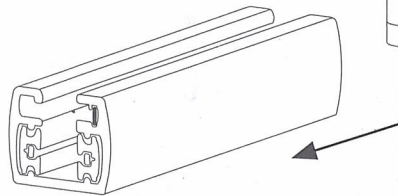
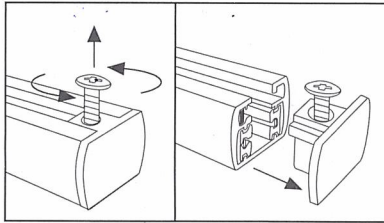
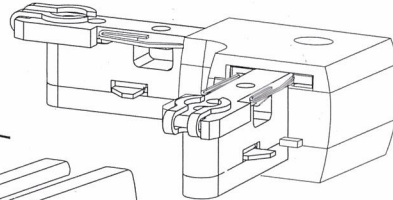
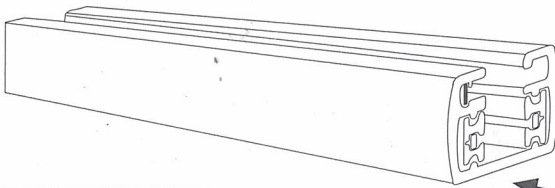


1x s=1.5mm

**A**



**Safety Instructions**  
Nr.0,1,2,4



**B**



**Safety Instructions**  
Nr.0,1,2,4

